

Basic Manual



W33SA
by SANYO

CDMA 1X
WIN

au by KDDI

Contents/
Before Use

Phone Call

Address Book/
Pair Function

Mail

Hello Messenger

Camera

EZweb

EZnavi

EZ Television

EZ·FM

Inputting Text

Remote Auto Lock/
Troubleshooting

Other Features/
Index

Preface

Thank you very much for purchasing the W33SA.

Before using your W33SA, be sure to read the W33SA “Basic Manual (this PDF manual)” to ensure correct use of your W33SA. After you have finished reading, store this PDF manual and the printed manuals in a safe place so you can retrieve them whenever you need.

Contact the au shop or the au Customer Service Center for replacements if you lose either of these manuals.

Printed Manuals for the W33SA (Japanese)

The W33SA comes with the Basic Manual and a Manual.

●W33SA Basic Manual



Equivalent to this English PDF manual.

●W33SA Manual



An English version is not available.


The following manuals are also available from the au homepage:

- The downloadable “Basic Manual” and “Manual”
(<http://au-pro.kddi.com/phone/torisetu/index.html>)
- The au online manual (Japanese) for searching by keyword
(<http://www.au.kddi.com/manual/index.html>)

The au online manual (Japanese) is also available from the EZweb:

<How to access> EZ Top Menu → 料金・申込・インフォ (Charges, application and information) → au オンラインマニュアル (au online manual)

Please visit the homepage of SANYO Electronics Co., Ltd. as below to check the symptoms if you have troubles.

- From W33SA : Press  for more than one second. (SANYO Keitai Planet)
- From PC : <http://www.sanyo-keitai.com> (SANYO Keitai Arena)

Information

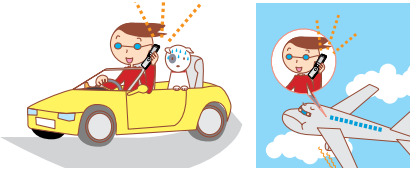
- Font or indications may be different from those on the actual screen or may be partly omitted for better readability of PDF manual.
- Screen color tones shown in this manual are those obtained with the default setting. Note that this PDF manual may not reproduce actual screen color tones correctly.

Manners for Using Cellphones

- A cellphone always generates weak electric waves while its power is ON.
- Be considerate of others and the environment around you, and have fun using your cellphone safely.

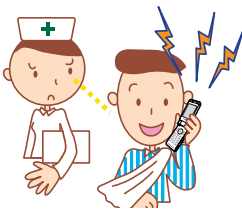
● In some places, the use of cellphones is prohibited.

- Do not use cellphones while you are driving. Doing so is dangerous and also forbidden by law.
- Be sure to turn your cellphone OFF before you board airplanes. The use of cellphones onboard airplanes is forbidden by law.



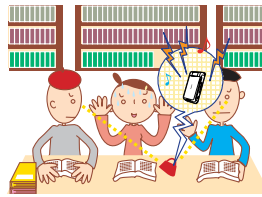
● Electric waves from cellphones may adversely influence medical devices and equipment.

- People with a pacemaker may be close to you in crowded places such as trains. Turn your cellphone OFF in such places.
- Abide by the instructions of hospitals and other medical institutions where it is forbidden to use or carry cellphones.



● Consider where to use your cellphone and be careful of how loudly you talk.

- Do not make calls in cinemas, theaters, museums, libraries and other similar places. Turn your cellphone OFF or set it to the manner mode to prevent others around you from being inconvenienced by ring tones for incoming calls or mails.



- When on a crowded street, use your cellphone in places where you do not prevent others from passing.
- When on a train or in a hotel lobby, move to areas where you will not bother others around you.
- Take care not to talk too loudly during conversations.



- Get permission from persons who will appear in photos or movies before you shoot photos or movies of others with your cellphone.



Basics of the Cellphone

What You Can Do with the W33SA

Mail

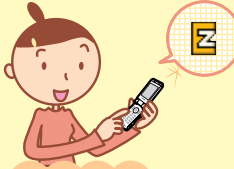
You can send mails to other cellphones or personal computers.



→ Page 43

EZweb

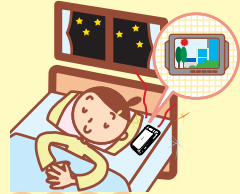
You can access the Internet to check the news or download Chaku-Uta®, Chaku-Uta-Full® and wallpapers.



→ Page 69

EZ Channel

You can automatically receive information by simply registering programs.



→ Page 77

EZnavi

You can search various locations with the functions of "EZ Navi Walk", "Position Search" or "Area Message".



→ Page 78

EZ Television

You can readily enjoy the Analog/Digital Terrestrial Broadcasting for Mobile Television Service (1Seg).



→ Page 82

EZ·FM

You can readily enjoy FM radio.



→ Page 90

Camera

You can shoot photos or movies and easily send them by E-mail.



→ Page 62

Hello Messenger

You can enjoy the text or voice shared with maximum of four members.



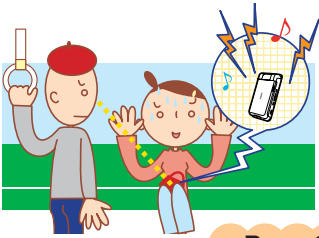
→ Page 58

Manner Mode and Answer Phone

■ Manner Mode

With Manner Mode, you can set the ringer not to sound so as not to bother the people around you.


Press  for more than one second.



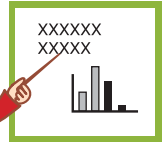
→ Page 31

■ Answer Phone

The caller can leave a message when you cannot answer the phone.

Press  for more than one second while the standby screen is displayed.

*"I can't answer the phone right now."
(Japanese)*



→ Page 32

Check the Power, Reception and Battery!

■ Keep the “power” ON for normal use.



Keep the power ON to make or answer calls.


Press  for more than one second.

→ Page 15

■ You cannot talk on the phone if the “electric waves” are too weak.



It is sometimes difficult to receive electric waves in some places even within a service area.


“” indicates the reception state.

→ Page 15

■ Pay attention to the remaining “battery” power.



If the remaining battery power is too low, you may not be able to use the cellphone properly.


“” indicates the remaining battery power.

→ Page 15

Not Using Your W33SA While Driving

- Holding a cellphone in your hand to make phonecalls and/or watching the screen to view E-mails, etc., while driving shall be subject to penalties. (The implementation of the revised Road Traffic Law on November 1, 2004)



 Viewing E-mails and watching the screen




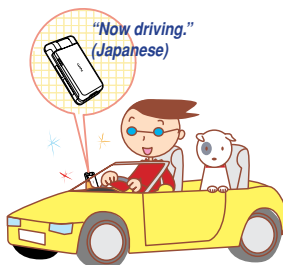
 Calling with a cellphone in your hand

Turn the Power OFF or Set Drive Mode While Driving

■ Drive Mode

By setting Drive mode, you will enable the caller to receive a response message such as “Now driving. I can’t answer the phone right now... (Japanese)” and store the caller’s message in the Answer Phone.

Press  while the standby screen is displayed, and select “Drive” → “Continuous Mode”.



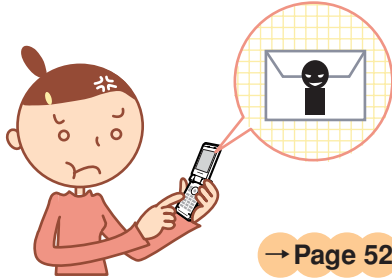
Beware of Junk Mails and One-Ring Calls!

■ If you receive junk mails...

Using the mail filter function, you can reject mails sent from specific addresses or mails that bear “未承諾広告※(Unsolicited Ad)” in the title, which is the biggest source of junk mails.

The following mail functions are available for preventing arrival of junk mails.


- “未承諾広告フィルター” : Rejects 未承諾広告 (Unsolicited Ad) mails.
- “アドレスフィルター” : Rejects mails sent from specified addresses.
 - “指定受信設定” : Accepts only mails sent from specified addresses.
 - “指定拒否設定” : Rejects mails sent from specified addresses.

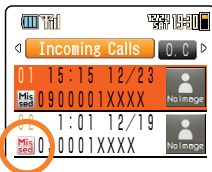


→ Page 52

■ If you receive calls from unknown numbers...

It may be “One-Ring Calls” intended to trick you into calling back and accessing unwanted pay programs.


If one-ring calls are received,  is displayed in the Incoming Calls.




→ Page 27

Making Side Key Operation Invalid

■ Making Side Key Operation Invalid

Prevent side key misoperation when carrying the W33SA closed in your bag. Press  (MainMenu) for more than one second while the standby screen is displayed.

To Release from the Locked Status

Open the W33SA and press  (MainMenu) for more than one second while the standby screen is displayed.

Disaster Bulletin Board Service

About Disaster Bulletin Board Service

When a big scale disaster occurs, you can register your safety information through EZweb. The registered safety information can be referred from anywhere in Japan through EZweb or Internet.

Registering safety information

- ◆When a big scale disaster occurs, from au cellphone, you can register your safety information such as your condition or comments to the “災害用伝言板 (Disaster Bulletin Board)” created on the EZweb.
- ◆ After the registration of your safety information, you can notify by E-mail your family or acquaintances you have previously designated that you registered your safety information on the “災害用伝言板 (Disaster Bulletin Board)”.

Referring to the safety information

- ◆You can refer to the safety information of the person you want to know about by entering his/her phone number from EZweb or Internet*.

* When you refer to the safety information from other carriers' cellphone (except for TU-KA), PHS or personal computer, you can refer to it from <http://dengon.ezweb.ne.jp/>.

How to access

 → “Top Menu” → “災害用伝言板 (Disaster Bulletin Board)”

<http://dengon.ezweb.ne.jp/>



<Top display of the
Disaster Bulletin Board>

災害用伝言板
伝言板トップ

～サービス提供中～
安否情報の登録・確認が
できます。

[登録\(ご利用可能地域の
方のみ登録可能です\)](#)
[確認](#)
[削除](#)
[お知らせメール設定](#)
[サービス概要](#)
[ご利用地域情報](#)
[お問い合わせ](#)

[English](#)

Register

Refer

<Safety information
reference display>

災害用伝言板

～確認～
安否情報を確認したい相
手のau/ツーカー携帯電話
番号を入力して下さい。

[検索する](#)

[伝言板トップへ](#)

<Safety information
registration display>

災害用伝言板


～登録～
被災状況
無事です。
被害があります。
自宅に居ます。
避難所に居ます。
コメント見て

コメント入力(全角100文
字まで)

※登録内容確認画面にて
、お客様の携帯電話番号
および登録日時が表示さ
れます。

[登録](#)

[伝言板トップへ](#)

- ▶ The maximum preservation period of the registered information is 72 hours.
- ▶ The maximum available number of each registration is 10. When the number of registration exceeds 10, the information will be overwritten from the oldest one.
- ▶ The demonstration of this service can be referred to anytime by pressing  → “Top Menu” → “料金・申込・インフォ(Charges, application and information)” → “災害用伝言板(デモ版)(The demonstration of Disaster Bulletin Board Service)”.
- ▶ Select "English" to move to English mode.

Contents

Manners for Using Cellphones	1
------------------------------------	---

Basics of the Cellphone	What You Can Do with the W33SA	2
	Manner Mode and Answer Phone	3
	Check the Power, Reception and Battery!	3
	Not Using Your W33SA While Driving	4
	Beware of Junk Mails and One-Ring Calls!	5
	Making Side Key Operation Invalid	5
	Disaster Bulletin Board Service	6

Contents	8
-----------------	----------

Before Use	Confirming the Package Contents	10
	Names of Parts	11
	Inserting the miniSD™ Memory Card (Commercially Available) ...	12
	Using the Noise Filter	13
	Charging the Battery Pack	14
	Turning the Power ON	15
	Switching the Screen Display to English	16
	Basic Usage of the Phone	18
	Setting to Front Style or Recording Oneself Style	20
	Icons	21
	Setting the E-mail and EZweb Initialization	22
	Confirming Your Phone Number and E-mail Address	23
	Changing Your E-mail Address	24

Phone Call	Making Calls	26
	Answering Calls	26
	Calling Back (Outgoing Calls/Incoming Calls)	27
	Countermeasure for One-Ring Calls	27
	Changing Ringer Type	28
	Adjusting Ringer Volume	30
	Adjusting the Other Party's Voice Volume	31
	Setting the Manner Mode	31
	Setting Answer Phone	32
	Playing Back Messages on Answer Phone	33

Address Book	Registering Data in the Address Book	34
	Making a Call from the Address Book	37
	Editing Address Book Data	38
	Registering Data from Outgoing/Incoming Calls	40

Pair Function	Registering Data as a Popular Contact	41
	Making a Call to the Popular Contact	42
	Sending a Mail to Popular Contact	42

Mail	E-mail	43
	Creating and Sending E-mail	44
	Reading Received E-mail	47
	Reading E-mail from the Inbox	49
	Replying to Received E-mail	50
	Blocking Junk Mail	52
	C-mail	53
	Creating and Sending C-mail	54
	Reading Received C-mail	56
	Reading C-mail from the Inbox	57

Hello Messenger		58
	Displaying Hello Messenger Menu	59
	Inviting Member to the Meeting	60
	When Receiving the Meeting Invitation	61
<hr/>		
What You Can Do with the Camera		62
Camera	Shooting Photos	64
	Recording Movies	65
	Viewing Photos or Movies	67
	Attaching a Photo or a Movie to an E-mail Message	68
	Photo Mail	68
<hr/>		
EZweb	EZweb	69
	Displaying the EZ Top Menu	70
	Bookmarking Frequently-Accessed Sites	71
	Accessing Bookmarked Sites	72
	Viewing Charges	73
	Downloading Chaku-Uta [®]	74
	Downloading Chaku-Uta-Full [®]	76
	EZ Channel	77
<hr/>		
What You Can Do with EZnavi		78
What You Can Do with Security Navi	What You Can Do with Position Search	80
	What You Can Do with Area Message	81
<hr/>		
EZ Television (1Seg)	What You Can Do with EZ Television (1Seg)	82
	Digital Terrestrial Broadcasting for Mobile Television Service (1Seg)	82
	Data Broadcasting	83
EZ Television (A)	What You Can Do with EZ Television (A)	84
	Antenna Available for W33SA	84
	Watching EZ Television (A)	86
	Switching between the Earphones and Speakers	87
	Recording the TV Program	88
	Ending EZ Television (A)	89
<hr/>		
EZ · FM	Antenna Available for W33SA	90
	Listening to EZ · FM	90
	Ending EZ · FM	91
<hr/>		
Inputting Text	Switching the Input Mode	92
	Entering Single-byte Alphanumeric Characters	92
	Entering E-mail Addresses	94
	Entering Pictographs	95
<hr/>		
In Case You Lose Your W33SA	Setting the Remote Auto Lock Activation Conditions	96
	Activating Auto Lock on the W33SA through Remote Operation ...	97
<hr/>		
Troubleshooting		98
<hr/>		
Other Features		99
<hr/>		
Index		100

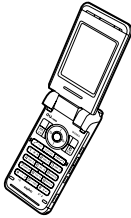
Before Use



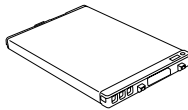
Confirming the Package Contents

The W335A phone and accessories are included in the package.

W335A Phone

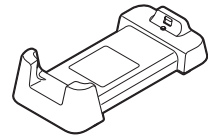


Battery Pack

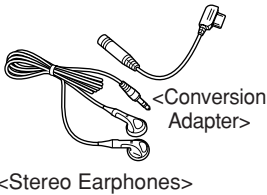


(Assembled inside of the phone)

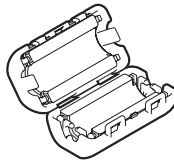
Desktop Holder



SANYO Flat-type
Stereo Earphones 03



Noise Filter (Sample)



Warranty (Japanese)

Precautions in Use
(Japanese)

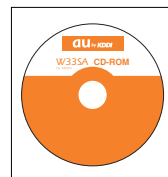
Basic Manual (Japanese)



Manual (Japanese)



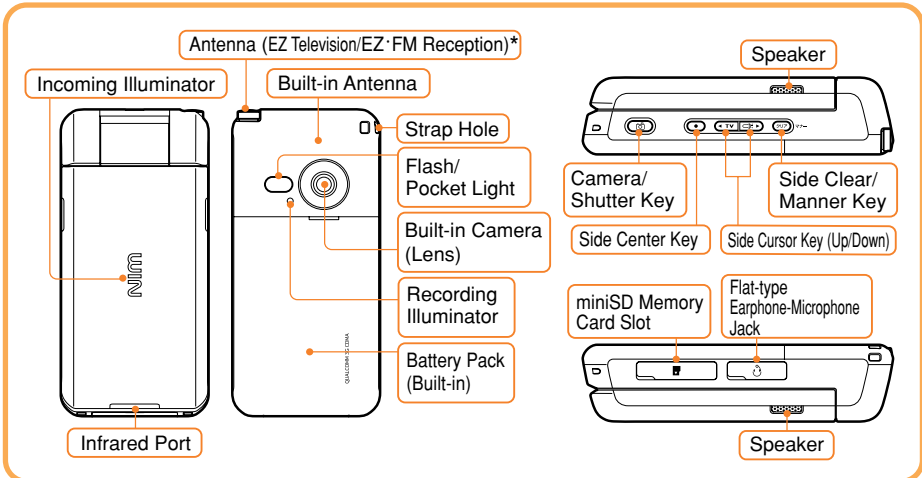
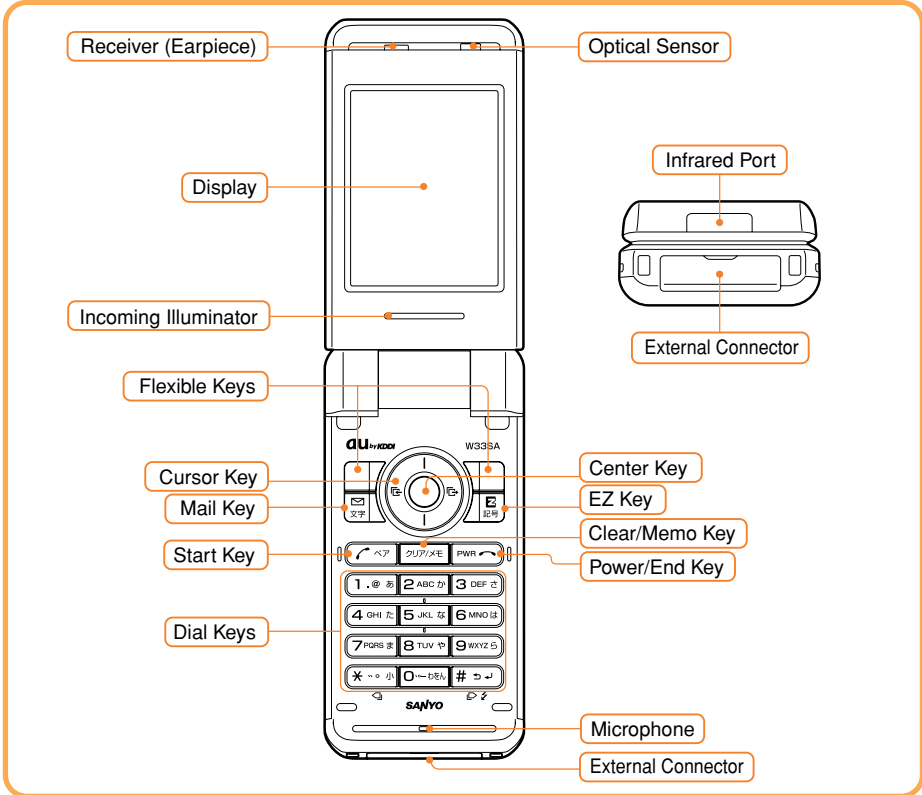
CD-ROM (Japanese)



Information

AC adapter is not included in the package. Please purchase the Common AC adapter 01 separately.

Names of Parts



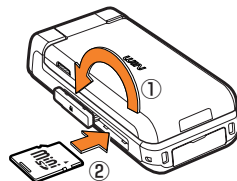
* Extend the Antenna (EZ Television/EZ·FM Reception) when receiving EZ Television or EZ·FM broadcasts. It does not improve the quality of voice calls or EZweb communication.

Inserting the miniSD™ Memory Card (Commercially Available)

When a miniSD™ Memory Card is inserted, you can shoot large photos or long movies and save them in the miniSD™ Memory Card.

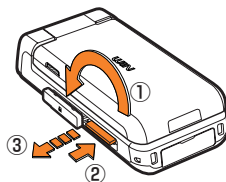
■ Inserting

- ① Rotate and open the miniSD Memory Card Slot cover.
 - ② Insert the miniSD™ Memory Card into the miniSD Memory Card Slot until it locks in the place, then close the cover.
- Check which way the miniSD™ Memory Card is facing before inserting it into the slot.



■ Removing

- ① Rotate and open the miniSD Memory Card Slot cover.
- ② Slightly push the miniSD™ Memory Card inward to release the lock.
- ③ The miniSD™ Memory Card will come out. Pull it out slowly and close the cover.



Information

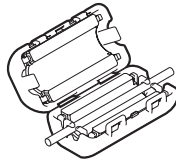
- If you flick the miniSD™ Memory Card inward with your fingernail, the miniSD™ Memory Card may pop out suddenly. Be careful not to direct it toward someone's face.
- The miniSD™ Memory Card is not included with W33SA. Please purchase this item separately.

Using the Noise Filter

If you watch EZ television while recharging, attach the Noise Filter on the power cord of the Common AC adapter 01 (sold separately).

1

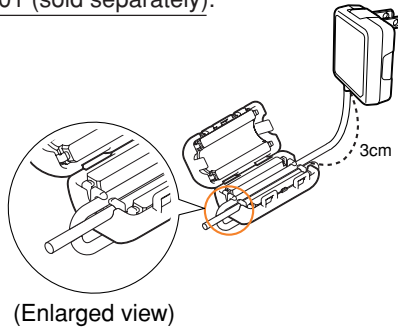
Set the cord in along to the groove.



2

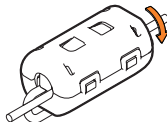
Roll up the cord around the Noise Filter once.

- ▶ Set the cord into the groove to roll up the cord.
- ▶ Attach the Noise Filter on the cord approximately 3cm from the Common AC adapter 01 (sold separately).



3

Shut the filter until it clicks.



Information

Be careful not to shut the Noise Filter with the cord fastened. It may cause the damage on the cord.

Charging the Battery Pack

The battery pack is not fully charged at the time of purchase.

When you use the W33SA for the first time, charge the battery pack.

How to Charge the Battery Pack

1

Connect the Common AC Adapter 01 to the Desktop Holder.

- ▶ Check the pin configuration and orientation of the connector before connecting the adapter.

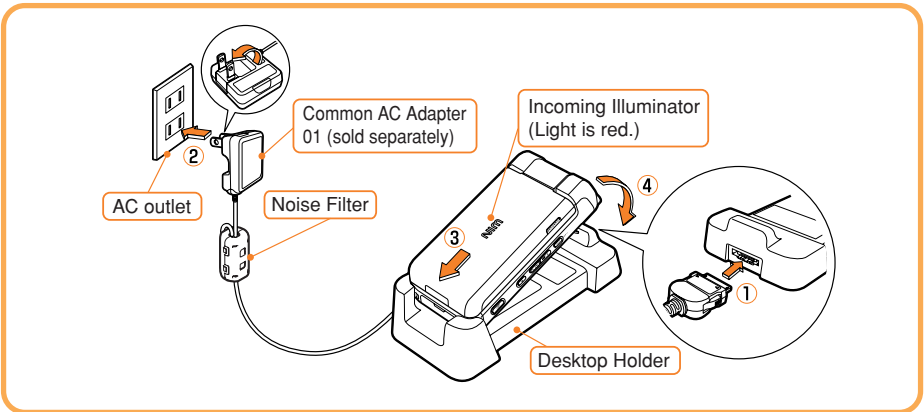
2

Plug the power plug of the Common AC Adapter 01 into an AC outlet.

3

Attach the W33SA phone in which the battery pack is installed to the Desktop Holder.

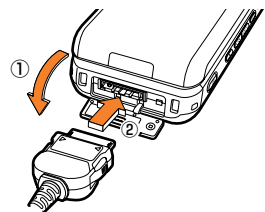
- ▶ To detach, hold down the Desktop Holder and detach the W33SA phone.



- The cellphone beeps and the Incoming illuminator lights red. → Charging in progress.
- The cellphone beeps and the Incoming illuminator turns off. → Charging completed.

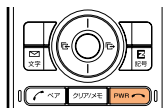
Information

- The battery pack can also be charged by directly inserting the Common AC Adapter 01 (sold separately) connector into the external connector on the W33SA phone.
- Please be forewarned that the actual figures may differ from the illustrations depending on your AC adapter.








Turning the Power ON

1 Press  for more than one second.








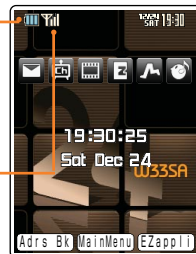
<Standby screen>



Check the battery level.

				
High	Medium	Low	Zero	Charging

Check electric wave reception.

				
Strong	Medium	Weak	Very weak	Out of service area



-  When “Out” is displayed, you cannot make or receive calls.
-  When “Y” is displayed, you may not be able to make or receive calls.

Turning the Power OFF

Press  for more than one second.


About the Default Settings

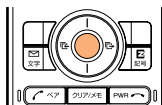
When purchased, the W33SA is configured with the following default settings.

Lock No.		1234
Font Size	Entry Size	Large
	Mail Display	Medium
	EZweb Display	Medium
	AddressBookList	Large
	Phone No. Entry	Large
Caller ID		ON
Call Notice	Call Ringer	Pattern1
	Ringer Volume	Level3
	Call Image	Monochrome
	Vibrator	OFF (Ptn1 Med in the Manner Mode)
	Lamp	Prior Data/Color3



Switching the Screen Display to English

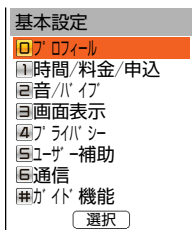
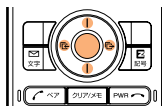
Menus, messages and other screen displays can be switched between Japanese and English.

- 1** Press  (メインメニュー) while the standby screen is displayed.





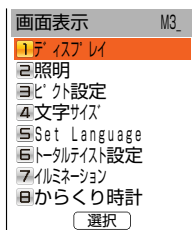
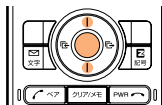
▶ The Main Menu (Japanese) appears.

- 2** Use  to select “基本設定 (Basic Settings)” and press  (選択 (Select)).





▶ The 基本設定 (Basic Settings) screen appears.

- 3** Use  to select “画面表示 (Screen)” and press  (選択 (Select)).

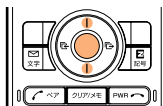


▶ The 画面表示 (Screen) screen appears.

4

Use  to select “Set Language” and press  (選択 (Select)).

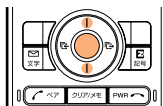
▶ The Set Language settings screen appears.



5

Use  to select “English” and press  (Set).

▶ The screen display is set to English.



Basic Usage of the Phone

Basic Operation

Various functions and settings of the W33SA can be operated by selecting an item with the cursor keys (⬆️) and pressing the center key (⬇️).

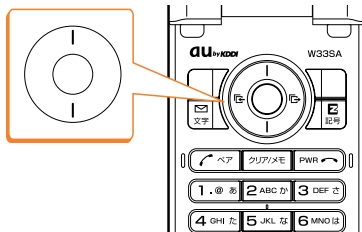
In this Basic Manual, the usage of the cursor and center keys is indicated as follows.

<Example>

Press the up or down key → 

Press the left or right key → 

Press the center key → 



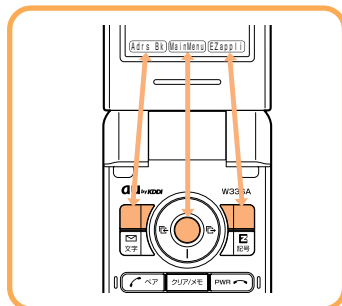
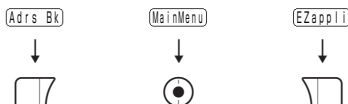
Flexible Keys

Use these keys to operate items indicated in the lower part of the display.

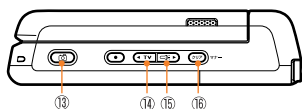
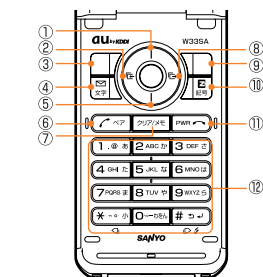
The displayed items may differ depending on the screen.

In the case shown in the figure on the right:

Press the corresponding key for the indicated functions below.



How to Use the Keys



- ① Displaying the launcher menu, Increasing receiver volume
- ② Accessing the Incoming Calls/Received Records
- ③ Accessing the address book/Register New
- ④ Accessing E-Mail Menu/C-Mail Menu
- ⑤ Decreasing receiver volume
- ⑥ Making/Answering calls, Accessing the Popular Menu
- ⑦ Erasing characters, Canceling operations, Accessing the Voice/Memo Menu
- ⑧ Accessing the Outgoing Calls/Sent Records
- ⑨ Loading the EZ apps (BREW[®]) or the Menu
- ⑩ Connecting to EZweb
- ⑪ Powering ON/OFF or ending calls
- ⑫ Entering phone numbers or characters
- ⑬ Audible confirmation of the current time and Notices, Accessing the photo mode
- ⑭ Loading EZ Television
- ⑮ Turning ON the pocket light
- ⑯ Setting or releasing the Manner Mode

Using the Main Menu

Pressing **○** (MainMenu) while the standby screen is displayed launches the Main Menu. Use the cursor keys (**⬅**) to select an item from the Main Menu, then press the center key (**○**) to enter and access the selected function.



Press **⬅** to return to the previous screen if you get confused or make a wrong operation.
Press **PWR** to return to the standby screen.

How to Use the Launcher Menu

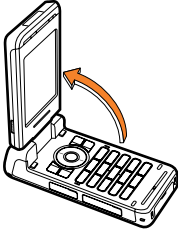
The W33SA enables you to use each service menu from the launcher menu by pressing **○** while the standby screen is displayed. You can select and launch functions from the menu using **⬅**.

Launcher Menu	Icon	Service Menu
<p>Use ○ to access the functions on the right.</p>		E-mail Menu
		EZ Channel Menu
		EZmovie Menu
		EZ Menu
		EZnavi
		Chaku-Uta-Full Menu

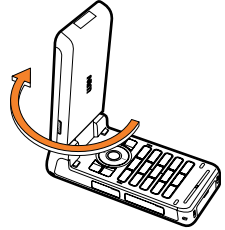
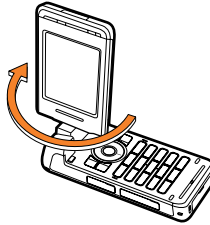
Setting to Front Style or Recording Oneself Style

W33SA allows you to use in Front Style or Recording Oneself Style other than usual open style.

- 1** Open the display at 90 degrees and hold once.



- 2** Rotate the display 180 degrees clockwise.



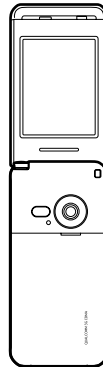
- Do not make any operations while rotating.

- **Front Style**
Turning out the display and hold as closed:



You can shoot the picture in the same style as a digital camera.

- **Recording Oneself Style**
Turning out the display and hold as opened:

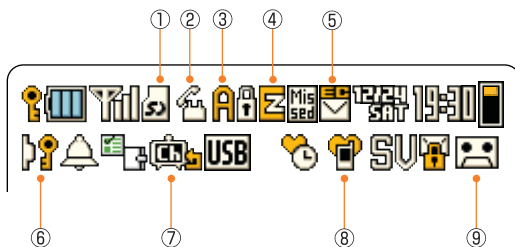


This style is convenient to shoot the picture of yourself.

Information

- Descriptions of this manual indicate the W33SA operation in the opened style.
- Rotate the display to the direction along the arrow mark on the figure. Do not force to rotate so that it may cause the malfunction.

Icons



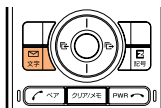
Number	Displayed Contents
①	When the miniSD™ Memory Card is inserted
②	Communicating/Running EZ·FM () /Running EZ Television ()/ Running Hello Messenger ()
③	Running EZ apps (BREW®)
④	Using EZweb
⑤	Unread mail exists
⑥	Side Key Operation Invalid
⑦	EZ Channel registered program (Auto Update Check ON)
⑧	While the Manner Mode is ON
⑨	While the Answer Phone is ON

Setting the E-mail and EZweb Initialization

You must subscribe to the EZweb service to use the E-mail and EZweb services. Please contact the au shop or the au Customer Service Center if you did not subscribe to the service at the time of purchase.

Perform initialization before using the E-mail and EZweb services. Initialization automatically provides your E-mail address.

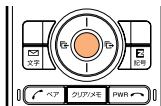
1 Press  while the standby screen is displayed.



EZwebを利用するための初期設定を行います

「OK」を押してしばらくお待ちください。

2 Press  (OK).



Initializing subscriber account.

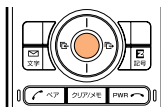
Please be patient...

▶ Wait for a while until the screen on the right appears.





Welcome to EZweb.
Your e-mail address is:
△△△△△△△△@ezweb.ne.jp

3 Press  (OK).



Information

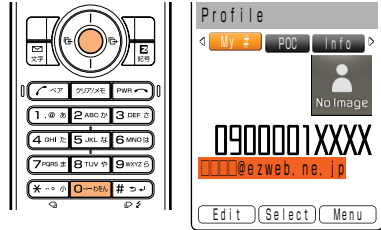
Initialization can also be performed by pressing  or  (EZappli).

Confirming Your Phone Number and E-mail Address


1

Press  (MainMenu) and  while the standby screen is displayed.

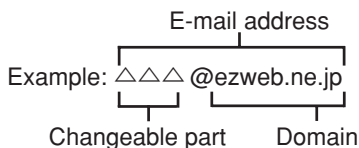
- ▶ The Profile screen appears, and you can confirm your phone number and E-mail address.



Information

While the standby screen is displayed, your phone number and E-mail address can also be confirmed by selecting  (MainMenu) → “Basic Settings” → “Profile”.

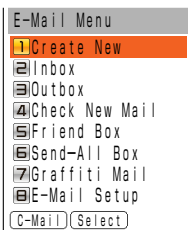
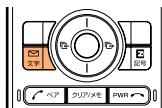
Changing Your E-mail Address



1

Press while the standby screen is displayed.

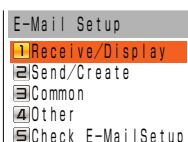
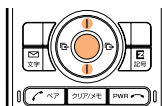
▶ The E-Mail Menu appears.



2

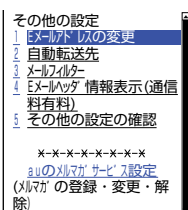
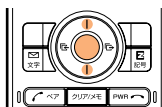
Use to select “E-Mail Setup” and press (Select).

▶ The E-Mail Setup screen appears.



3

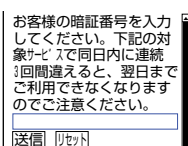
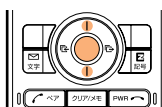
Use to select “Other” and press (Select).



4

Use to select “Eメールアドレスの変更 (Change E-mail Address)” and press (Select).

▶ The PIN number entry screen appears.

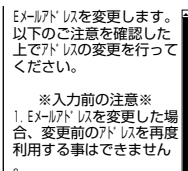
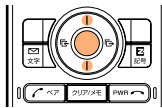




5

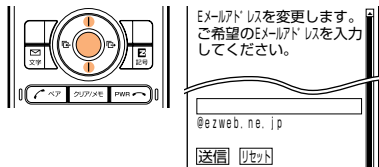
Enter your PIN number and use to select “送信 (Send)”, and then press (Select).



▶ The PIN number is a 4-digit number you have filled in an application form at the time of purchase.

▶ If you enter a wrong PIN number sequentially three times within the same day, you will not be allowed to perform setup operations until the following day.



- 6 After checking the cautions, use  to select “承諾する (Agree)” and press  (Select).

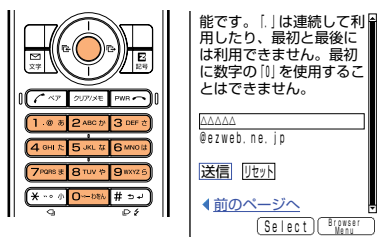




- 7 Use  to select the entry area and press  (Edit).



- 8 Enter an E-mail address and press  (OK).

- ▶ For details about entering E-mail addresses, see page 94.





- 9 Use  to select “送信 (Send)” and press  (Select).

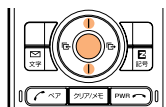
If the E-mail address you try setting is not accepted:

- The E-mail address you entered is already being used. Enter a different E-mail address.



- 10 After confirming the new address, use  to select “OK” and press  (Select).

- ▶ Hereafter, perform operations as prompted by on-screen instructions.



Phone Call



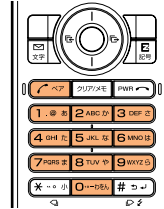
Making Calls

1

Use the - keys to enter the receiver's phone number, then press



- ▶ Making a call to a regular telephone, enter the phone number starting with the area code.



0900001XXXX

How to Make a Call

Add "184" before the phone number	Your phone number is not displayed on the receiver's display.
Add "186" before the phone number	Your phone number is displayed on the receiver's display.
Add nothing	The call is made in accordance with the Caller ID Notice setting.

- ▶ Press (Select) , use to select "Add" and then press (OK) to add "184" or "186".

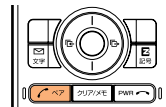
Information

It does not improve the quality of voice calls or EZweb communication. The Antenna is for exclusive use of EZ Television/EZ·FM Reception. Extend the Antenna (EZ Television/EZ·FM Reception) when receiving EZ Television or EZ·FM broadcasts.

Answering Calls

1

Press during an incoming call to answer it.



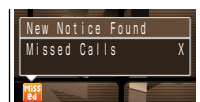
- ▶ Press to hang up.

Screen Displays for Incoming Phone Calls:

Caller's phone number Example: "0900002XXXX"	The caller has set it so as to display his/her phone number. The caller's name is also displayed if the caller's information is registered in your address book.
"ID Unsent"	The caller has set it so as not to display his/her phone number.
"Payphone"	The call is made from a payphone.
"Not Support"	The call is made from the phone that does not support ID notification.

Screen Display when the Call Is Not Answered:

The message shows that there were incoming calls unanswered (Missed Calls).

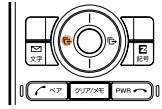


Calling Back (Outgoing Calls/Incoming Calls)

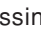
Example : To make a call by launching the Incoming Calls

1

Press  while the standby screen is displayed.

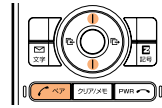


Incoming Calls

- ▶ The Incoming Calls appears.
- ▶ Pressing  displays the Outgoing Calls.
- ▶ The list shows the latest dialed/received call on top.

2

Use  to select the phone number, then press .



Information


The latest 20 phone numbers you dialed (Outgoing Calls) and received (Incoming Calls) are saved in each history.

Countermeasure for One-Ring Calls

What Are One-Ring Calls?

One-Ring Calls is a trick used to squeeze money from cellphone users. The call is hung up after only 1 ring so as to be left in the Incoming Calls. Receivers who call back will access programs for which they must pay.

Icon as a Countermeasure for One-Ring Calls

With the W33SA, One-Ring Calls (ringer time is 3 seconds or less) are indicated by  in the Incoming Calls. Be careful if you are not familiar with any phone numbers that are indicated this way.

Icons displayed on Incoming Calls



 : Missed call of which ringer time is 3 seconds or less



 : Missed call of which ringer time exceeds 3 seconds



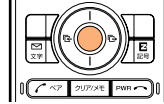
Changing Ringer Type



1

Press (Main Menu) while the standby screen is displayed.

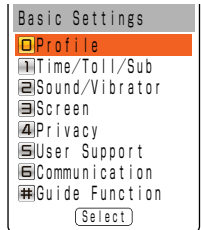
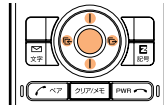
▶ The Main Menu appears.



2

Use to select “Basic Settings” and press (Select).

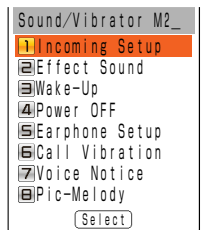
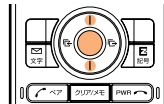
▶ The Basic Settings screen appears.



3

Use to select “Sound/Vibrator” and press (Select).

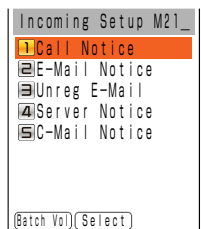
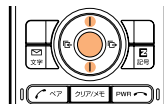
▶ The Sound/Vibrator setting screen appears.



4

Use to select “Incoming Setup” and press (Select).

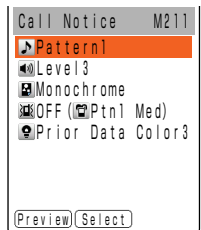
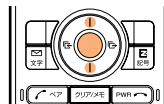
▶ The Incoming Setup screen appears.



5

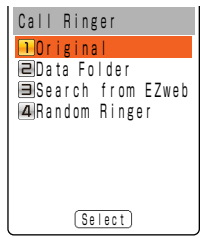
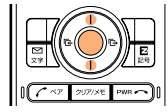
Use to select “Call Notice” and press (Select).

▶ The Call Notice setting screen appears.



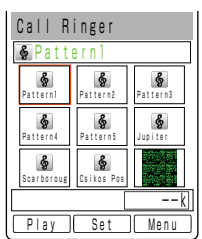
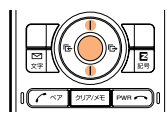


6 Use to select “” and press (Select).



▶ The Call Ringer selection screen appears.

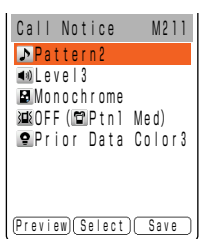
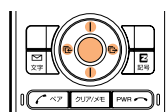
7 Use to select “Original” and press (Select).



▶ The Call Ringer selection screen appears.

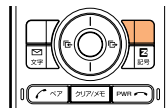
▶ Pressing (Play) plays back the selected ringer.

8 Use to select a melody (ringer) and press (Set).



▶ The melody title is displayed.

9 Press (Save).



▶ The melody (ringer) is set.

Information

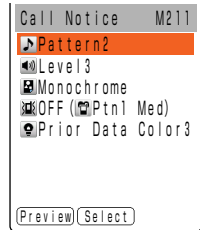
- The default ringer is “Pattern1”.
- The latest Chaku-Uta® (ringer) can be downloaded and set for the ringer. See page 74.

Adjusting Ringer Volume



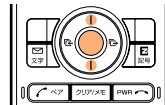
1

Perform steps 1 to 5 on page 28 to display the Call Notice setting screen.



2

Use to select “” and press (Select).

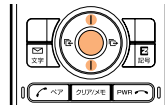


▶ The Ringer Volume setting screen appears.



3

Use to adjust volume and press (Set).



Press to increase the volume.

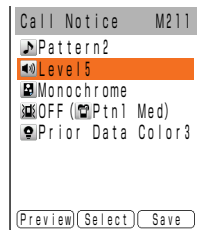
Press to decrease the volume.

▶ The ringer volume can be adjusted in 5 levels.

Set the volume to “OFF” to mute the ringer.

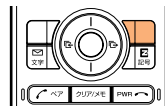
Press (Step ↑) to gradually increase the volume from Level 1.

Press (Step ↓) to gradually decrease the volume from Level 5.




4

Press (Save).



Adjusting the Other Party's Voice Volume

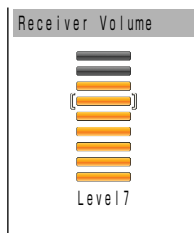
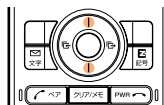
1

Use  to adjust volume during a call.

Press  to increase the volume.

Press  to decrease the volume.

- ▶ The voice volume can be adjusted in 9 levels during the call.






Phone Call


Setting the Manner Mode

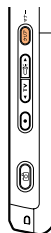
The W33SA notifies you of the incoming call by vibrating.

1

Press  for more than one second while the standby screen is displayed.




- ▶ “” and “” appear on the standby screen.

Answer Phone is turned ON at the same time and “” appears on the standby screen.



■ To Turn the Manner Mode OFF

Press  for more than one second while the standby screen is displayed.

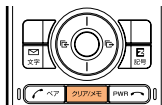
- ▶ “” and “” disappear when the Manner Mode is turned OFF. Answer Phone is turned OFF at the same time, and “” disappears.

Setting Answer Phone



1

Press **クリア/メモ** for more than one second while the standby screen is displayed.



- ▶ Answer Phone is turned ON and “☹” appears on the standby screen.

■ To Turn the Answer Phone OFF

Press **クリア/メモ** for more than one second while the standby screen is displayed.

Information

- Answer Phone can record for approximately 20 seconds maximum for each message, and up to 3 messages can be recorded including Phone Memo.
- Use “Voice Mail Service” when you have turned the power off or where electric waves are blocked.

Playing Back Messages on Answer Phone

When a message is recorded on Answer Phone:

- ▶ A message appears on the standby screen.



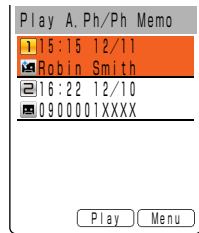
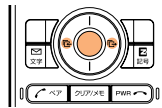
1

Use to select “” and press (Check).

- ▶ The Play A.Ph/Ph Memo selection screen appears.

Icons

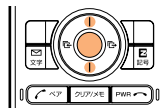
- : Unheard Answer Phone message
- : Heard Answer Phone message



2

Use to select the recorded message to play back and press (Play).

- ▶ The recorded message is played back.



Information

Message on Answer Phone can be erased as follows.

- ① While or after playing recorded message in step 2, press (Menu).
- ② Use to select “Erase” and press (OK).
- ③ Use to select “Erase One” and press (OK).
- ④ Use to select “YES” and press (OK).


Address Book



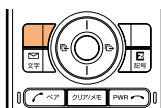
Registering Data in the Address Book






1

Press  (Adrs Bk) for more than one second while the standby screen is displayed.

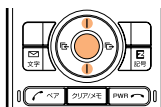
▶ The Edit Address Book screen appears.



2

Use  to select “” (Name) and press .

▶ The Name input screen appears.

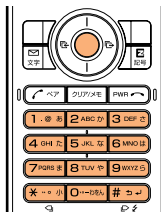


3




Enter a name and press  (OK).

▶ The Reading is automatically entered.

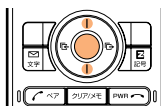
▶ For details about inputting text, see page 92.



4

Use  to select “” (Phone No. 1) and press .

▶ The Phone No. input screen appears.



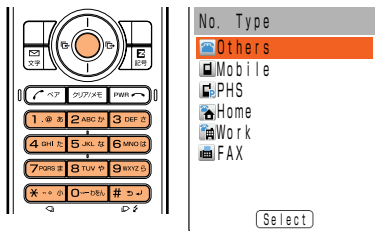


5

Enter a phone number and press (OK).

▶ The No. Type selection screen appears.

▶ Enter the area code when registering a regular telephone number.

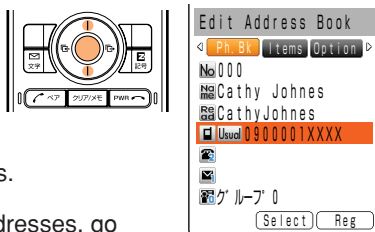


6

Use to select a type of phone number and press (Select).

▶ The Edit Address Book screen returns.

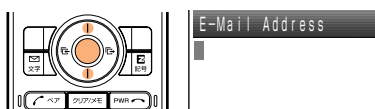
▶ If you do not want to enter E-mail addresses, go to step 10.



7

Use to select “” (E-Mail Address1) and press (Select).

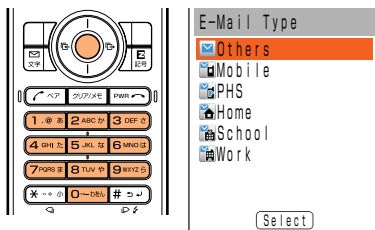
▶ The E-Mail Address input screen appears.



8



Enter an E-mail address and press (OK).

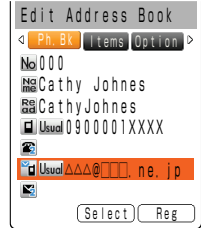
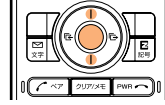
▶ The E-Mail Type selection screen appears.





9

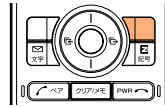
Use  to select a type of E-mail address and press  (Select).



▶ The Edit Address Book screen returns.

10

Press  (Reg).



▶ The numbers of entries remaining appear.


Information

- Up to 700 phone numbers and E-mail addresses can be registered.
- Memory numbers are automatically registered in the lowest available number between 000 and 699.
- You can register up to 3 phone numbers and 3 E-mail addresses in one address book entry.
- In addition, groups and images can be registered.

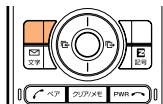
Making a Call from the Address Book



1

Press  (Adrs Bk) while the standby screen is displayed.

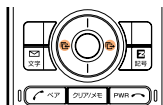
▶ The address book list screen appears.




2


Use  to switch between headings (ア, カ, サ, etc.).

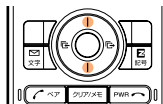
▶ The address book list screen appears.



3

Use  to select the person to call.

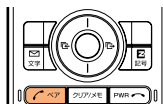
▶ Pressing  (Detail) displays the detail screen where you can confirm registered contents such as phone numbers and E-mail addresses.



4

Press .

▶ A call is made to the selected phone number.



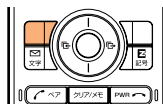
Editing Address Book Data

Example: To change a phone number



1

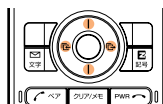
Press (Adrs Bk) while the standby screen is displayed.



▶ The address book list screen appears.

2

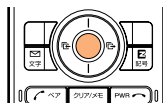
Use to switch between headings (ア, カ, サ, etc.), and use to select the data to edit.



3

Press (Detail).

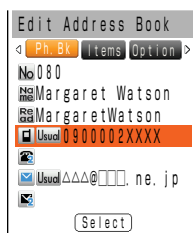
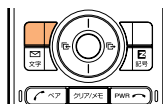
▶ The address book detail screen appears.



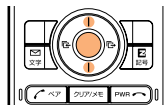
4

Press (Edit).

▶ The Edit Address Book screen appears.



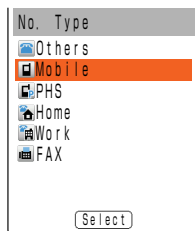
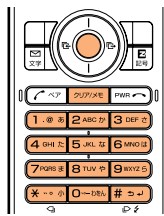
- 5** Use to select “” (Phone No.) and press (Select).



- 6** Edit data and press (OK).

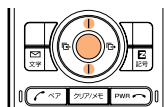
Pressing erases the selected character.

- Pressing for more than one second erases all characters.



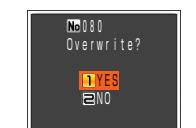
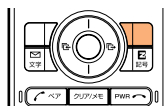
- 7** Use to select a type of phone number and press (Select).

- The Edit Address Book screen returns.



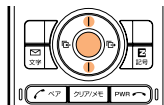
- 8** Press (Reg).

- A confirmation message appears, whether to overwrite the data or not.



- 9** Use to select “YES” and press (OK).

- The address book data is edited.



Information

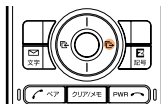
To edit names, see steps 2 and 3 on page 34.

Registering Data from Outgoing/Incoming Calls



1

Press while the standby screen is displayed.



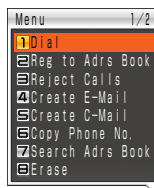
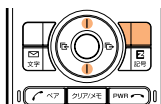
- ▶ The Outgoing Calls appears.
- ▶ If is pressed while the standby screen is displayed, the Incoming Calls appears.



Outgoing Calls

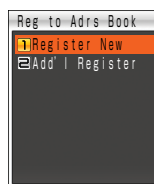
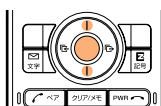
2

Use to select the phone number to register and press (Menu).



3

Use to select “Reg to Adrs Book” and press (OK).

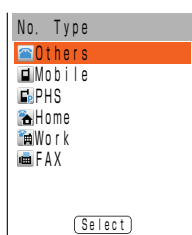
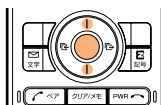


“Register New” : Registers new data in the address book.

“Add'l Register” : Adds or edits existing data and then registers the data in the address book.

4

Use to select “Register New” and press (OK).



- ▶ The No. Type selection screen appears.
- ▶ For the subsequent procedure, see steps 6 to 10 on pages 35 and 36.

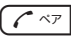
Pair Function



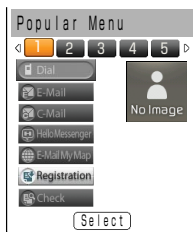
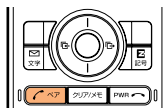
You can register the frequent contacts (up to 5 entries) as Popular Contacts to launch the data and make calls or send mails easily.

Registering Data as a Popular Contact




1

Press  while the standby screen is displayed.

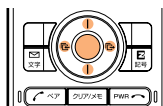
▶ Popular Menu appears.




2

Select a Popular number to register with . Use  to select “Registration”, and press  (Select).

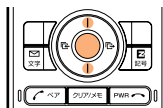
▶ A confirmation message appears.





3

Use  to select “YES” and press  (OK).

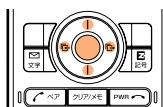
▶ The address book list screen appears.



4

Use  to select the person to register and press  (Select).

▶ The registration is completed.



Information

- Select a Popular Contact from the address book to register. Before registration, please refer to “Registering Data in the Address Book” (page 34) and register the data of the Popular Contact in the address book.
- A Popular Contact is linked to the address book and will be released when you delete the data of the Popular Contact from the address book.

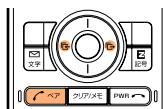


Making a Call to the Popular Contact



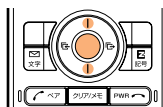
1

Press while the standby screen is displayed. Use to select the person to call.

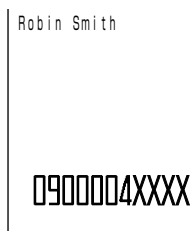


2

Use to select “Dial” and press (Select).



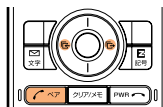
Select “Check”, press (Select) and you can check the registered data such as the phone number.



Sending a Mail to the Popular Contact

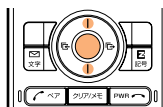
1

Press while the standby screen is displayed. Use to select the person to send a mail.



2

Use to select “E-Mail” or “C-Mail” and press (Select).



Please refer to “Creating and Sending E-mail” (page 44) to create E-mail, and “Creating and Sending C-mail” (page 54) to create C-mail.

Mail



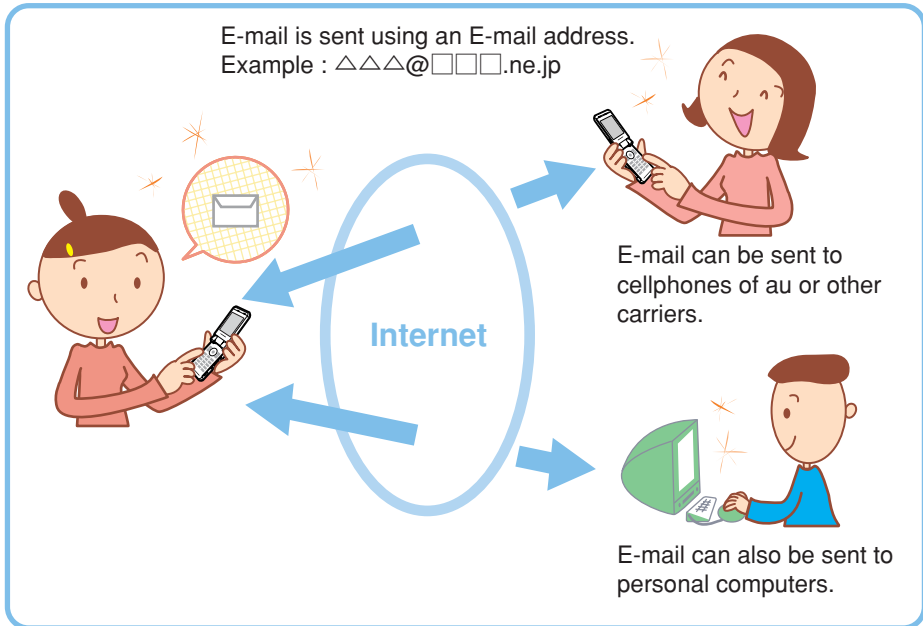
You must subscribe to the EZweb service to use the E-mail feature. Please contact the au shop or the au Customer Service Center if you did not subscribe to the service at the time of purchase.

Be sure to perform initialization before using the E-mail and EZweb services. If you have not performed initialization yet, see page 22.

E-mail

EZweb subscription required

E-mail is a service for sending/receiving mails to/from E-mail compatible cellphones and personal computers via Internet E-mail addresses. Up to 5000 two-byte characters can be sent in an E-mail message. Still images (photos), and moving images (movies) can also be sent via E-mail.



Information

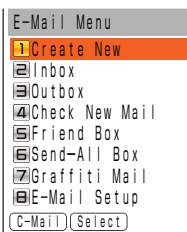
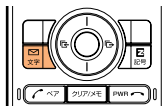
- You can send your mail (including Cc and Bcc) to up to 5 addresses at a time.
- Up to 1000 E-mails (including the number of addresses) can be sent a day.
- Transfer of mail containing attached data may take more time.

Creating and Sending E-mail

1

Press  while the standby screen is displayed.

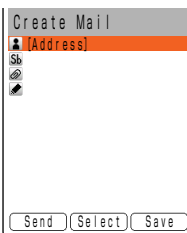
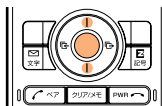
▶ The E-Mail Menu appears.






2

Use  to select “Create New” and press  (Select).

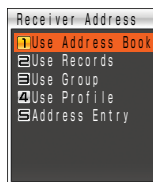
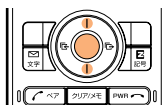
▶ The Create Mail screen appears.





3

Use  to select “” (Address) and press  (Select).

▶ The input method selection screen appears.

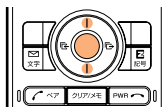


4

Use  to select “Use Address Book” and press  (OK).

▶ The address book list screen appears.

▶ Select “Use Records” or “Address Entry” and you can launch the Incoming/Outgoing Calls to select the address, or enter the E-mail address directly.

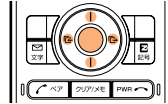




5

Search the address book with and press (Detail).

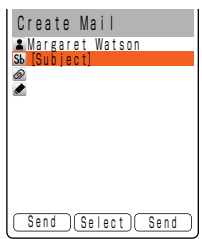
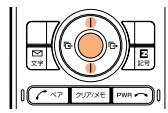
▶ The address book detail screen appears.



6

Use to select a desired E-mail address and press (Select).

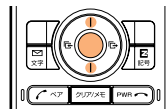
▶ The Create Mail screen returns.



7

Use to select “Sb” (Subject) and press (Select).

▶ The Subject input screen appears.

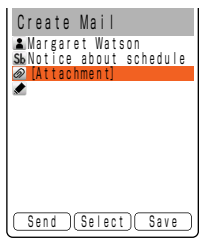
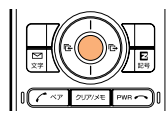


8

Enter the subject and press (OK).

▶ The Create Mail screen returns.

▶ For details about inputting text, see page 92.

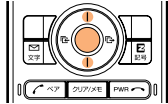




9

Use to select “” (Body) and press (Select).

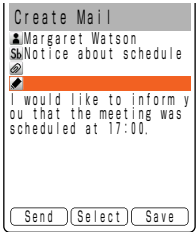
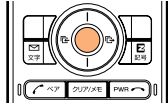
▶ The Body input screen appears.



10

Enter the body and press (OK).

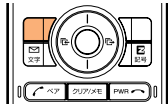
▶ The Create Mail screen returns.



11

Press (Send).

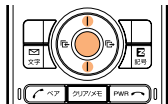
▶ “Photo Mail”, “My Pictograph” and “Easy Pictograph” are services that send your mail by automatically changing part of the address. You must subscribe separately to the EZweb service “Pictograph Mails” for using “Easy Pictograph” (free for charge) or “My Pictograph” (pay service).



12

Use to select “Send” and press (OK).

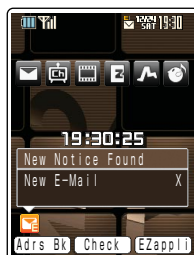
▶ After your E-mail was sent, the screen shown on the right appears.



Reading Received E-mail

When you receive E-mail:

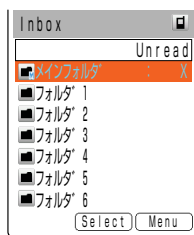
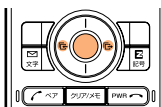
- ▶ A message “New Notice Found” appears on the standby screen.



1

Use to select “” and press (Check).

- ▶ The Inbox appears.
The number of unread messages appears in the rightmost column.

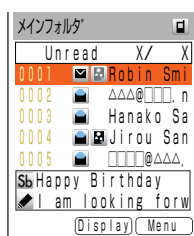
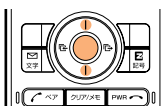


2

Use to select the folder in which the new E-mail is stored and press (Select).

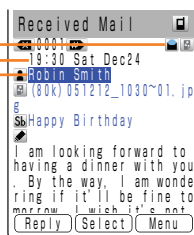
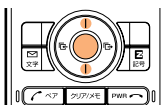
Icons

- : Unread mail
- : Read mail



3

Use to select the new E-mail and press (Display).



How to Read Received E-mail:

Indicates the mail has already been read.

Indicates the time and date when the E-mail was received.

Indicates the sender of the E-mail.

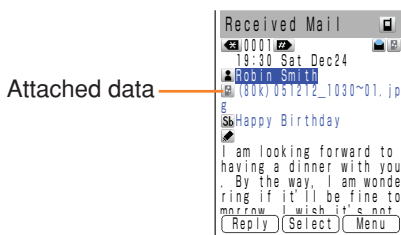




Mail

■ Viewing Received Photos or Movies

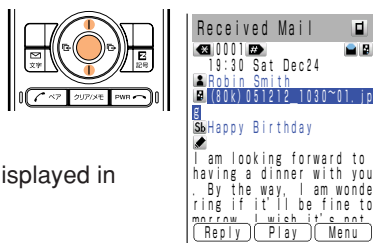
Example: To view a photo attached to a received E-mail

- 1 Perform steps 1 to 3 on page 47 to display the received mail.



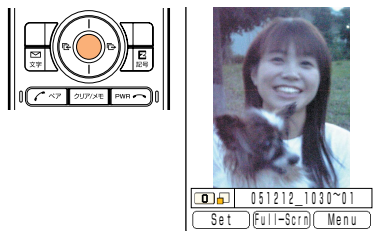
- 2 Use  to select the attached data and press  (Receive).

- ▶ When data is received, the photo is displayed in the text.




- 3 Press  (Play).

- ▶ Photos are displayed one by one.



Information

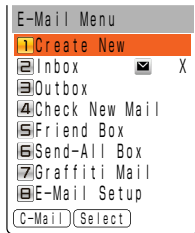
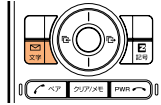
- Depending on the size of the attached data, it can be displayed in the text in step 1 or played back when you press  (Play) in step 2.
- Transfer of mail containing attached data may take more time.
- Mail transfer may take more time depending on the condition of electric waves in the area you are in.

Reading E-mail from the Inbox

1

Press  while the standby screen is displayed.

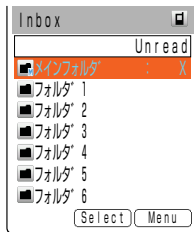
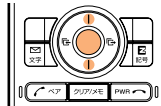
▶ The E-Mail Menu appears.





2

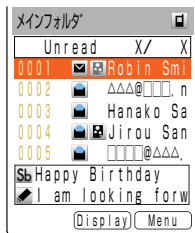
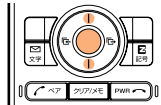
Use  to select "Inbox" and press  (Select).

▶ The Inbox appears.





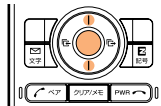
3

Use  to select the folder in which the E-mail you want to read is stored and press  (Select).



4

Use  to select the E-mail to read and press  (Display).

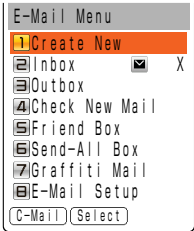
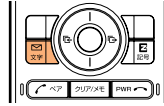


Replying to Received E-mail

1

Press  while the standby screen is displayed.

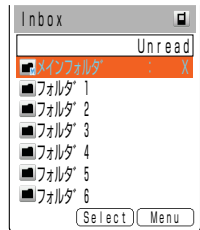
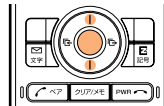
▶ The E-Mail Menu appears.





2

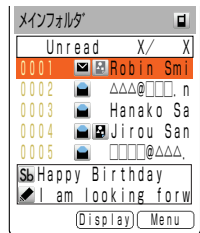
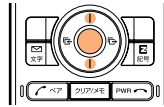
Use  to select "Inbox" and press  (Select).

▶ The Inbox appears.





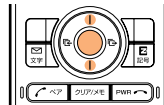
3

Use  to select the folder to which the E-mail you want to reply is stored and press  (Select).



4

Use  to select the E-mail to reply to and press  (Display).

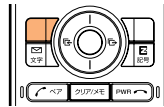


5

Press  (Reply).

▶ The Create Mail screen appears.

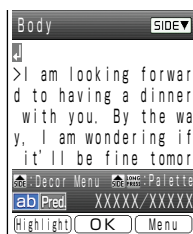
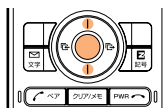
▶ "Re:" is attached to the beginning of the subject and the body of the original E-mail is quoted.



6

Use  to select “” (Body) and press  (Select).

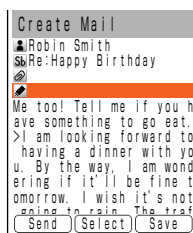
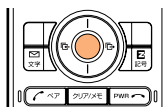
▶ The Body input screen appears.



7

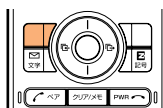
Enter the body and press  (OK).

▶ The Create Mail screen returns.





8

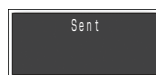
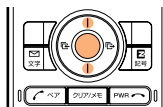
Press  (Send).



9

Use  to select “Send” and press  (OK).

▶ After your E-mail was sent, the screen shown on the right appears.











Mail

Blocking Junk Mail

To block junk mails, it is recommended to set up the メールフィルター (Mail Filter). KDDI provides the “サポート設定 (Support Setup)” function to guide which Mail Filter is suit for the customer from November 29, 2005. You can set up the Mail Filter easily answering the Inquiry on the screen.

■ Setting メールフィルター (Mail Filter)

Example : To access “サポート設定 (Support Setup)”

- ① Press  while the standby screen is displayed.
- ② Use  to select “E-Mail Setup” and press  (Select).
- ③ Use  to select “Other” and press  (Select).
- ④ Use  to select “メールフィルター (Mail Filter)” and press  (Select).
- ⑤ Enter your PIN number, press  (OK) and follow the instruction on the screen.

▶ The メールフィルター (Mail Filter) screen appears.

■ カンタン設定 (Easy Setup)

(The service will start on November 29, 2005.)

サポート設定
(Support Setup)

Set the filter in answering the inquiry.
For the users who would like to check each setting condition.

フィルターレベル(高)
(Filter Level / High)

Reject the mails from PC.
For the users who send/receive the mails between only cellphones.

フィルターレベル(中)
(Filter Level / Middle)

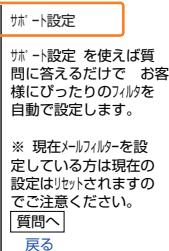
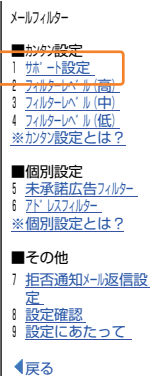
Select and block the persisting mails.
For the users who are annoyed by the stalker or the same junk mailer.

フィルターレベル(低)
(Filter Level / Low)

Block the Unsolicited Ad Mails or the impersonation mails.
The Filter minimum required.

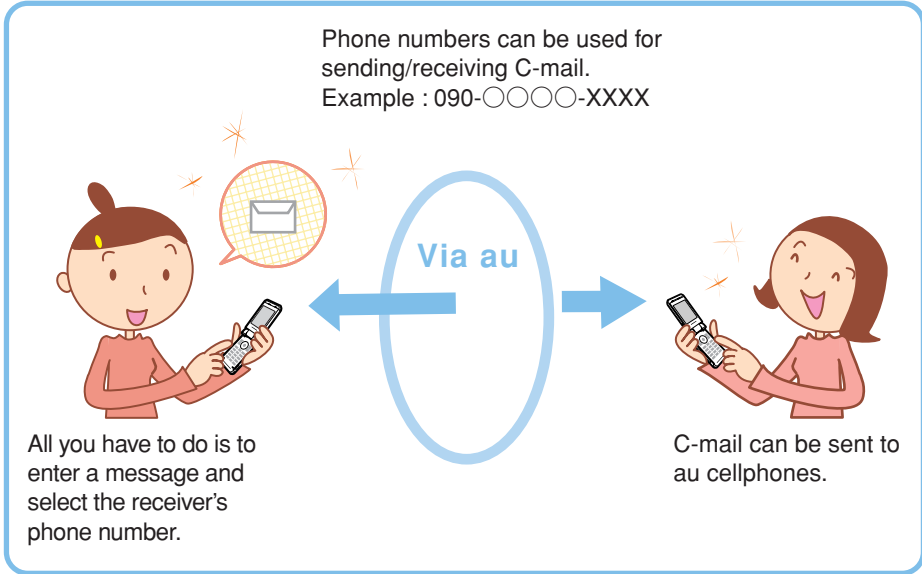
Information

You can also block the junk mails by changing the E-mail address.
Please refer to page 24 to change the E-mail address.



C-mail

C-mail is a service for sending/receiving mail to/from “C-mail” compatible au cellphones.



Information

A C-mail can include up to 50 two-byte (100 one-byte) characters.

■ C-mail Safe Block Function


C-mail safe block function is a function that allows you to reject to receive C-mails that include accessing URL (<http://△△△>, <https://△△△>) or phone numbers in the C-mail message text.

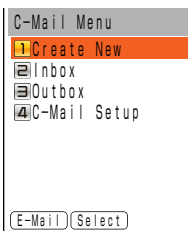
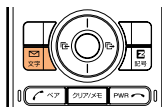
C-mail safe block function is valid by default. You can cancel the setting if you want to receive C-mails that include accessing URL or phone numbers in the C-mail message text.



Creating and Sending C-mail

1

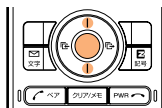
Press  for more than one second while the standby screen is displayed.



▶ The C-Mail Menu appears.

2

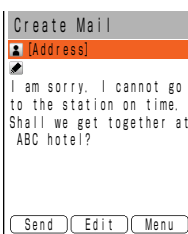
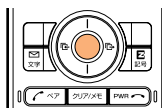
Use  to select “Create New” and press  (Select).



▶ The Body input screen appears.




3

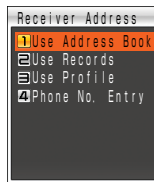
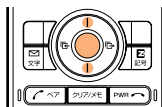
Enter the body and press  (OK).



▶ The Create Mail screen appears.

4

Use  to select “” (Address) and press  (Edit).



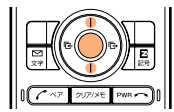
▶ The input method selection screen appears.





5

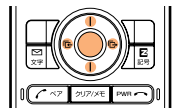
Use to select "Use Address Book" and press (OK).



- ▶ The address book list screen appears.
- ▶ Select "Use Records" or "Phone No. Entry" and you can launch the Incoming/Outgoing Calls to select the address, or enter the phone number directly.

6

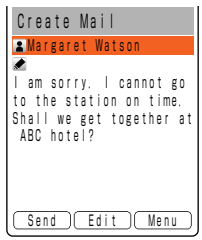
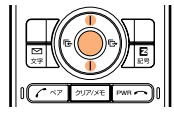
Search the address book with and press (Detail).



- ▶ The address book detail screen appears.

7

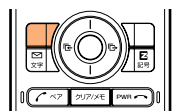
Use to select a desired phone number, and press (Select).



- ▶ The Create Mail screen returns.

8

Press (Send).



- ▶ After your C-mail was sent, the screen shown on the right appears.

Reading Received C-mail

When you receive C-mail:

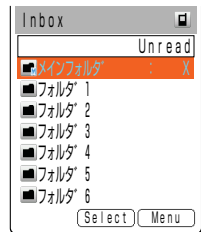
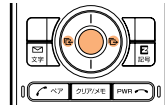
- ▶ A message “New Notice Found” appears on the standby screen.





1

Use  to select “” and press  (Check).



- ▶ The Inbox appears.
The number of unread messages appears in the rightmost column.
- ▶ The received C-mail is usually stored in the “メインフォルダ (Main folder)”.

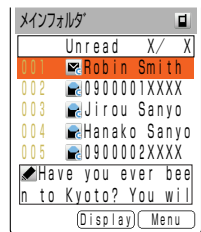
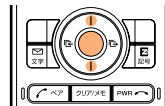


2

Use  to select the folder in which the new C-mail is stored and press  (Select).

Icons

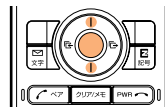
- : Unread mail
- : Read mail



3


Use  to select the new C-mail and press  (Display).

- ▶ The mail contents appear.

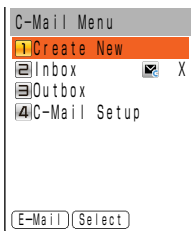
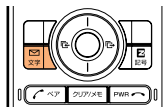


Reading C-mail from the Inbox

1

Press  for more than one second while the standby screen is displayed.

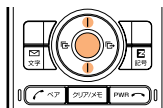
▶ The C-Mail Menu appears.





2

Use  to select “Inbox” and press  (Select).

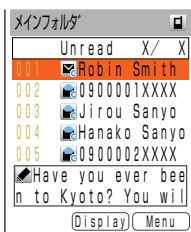
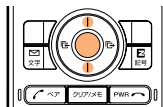
▶ The Inbox appears.





3

Use  to select the “メインフォルダ (Main folder)” and press  (Select).

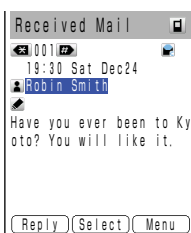
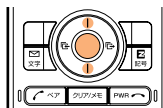
▶ The mail contents appear.



4

Use  to select the C-mail to read and press  (Display).

▶ The mail contents appear.



Hello Messenger



Hello Messenger is a service that allows you to communicate in the meeting (with text or voice, etc. in real time) using favorite characters between au cellphones “applicable to Hello Messenger”.

The host can select up to 4 meeting members from the address book.



Member 1
Send text messages.

Hello.



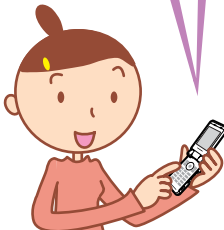
Member 2
Voice talk



Member 3
Shoot and send photos.



Member 4
Send text messages.



Host

Hello.





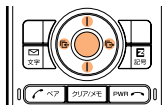
Information



Note that time available to use W33SA may shorten depending on the usage situation or the electric wave reception in your location for the frequent use of Hello Messenger.

Displaying Hello Messenger Menu

1

Press  (MainMenu) while the standby screen is displayed. Use  to select “Hello Messenger” and press .



- ▶ The Hello Messenger menu appears.
- ▶ When you activate Hello Messenger for the first time, press , select your character and press  (設定 (Set)).

■ Character list



Copyright© Yamashita Kohei / mountain mountain

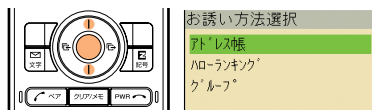


Inviting Member to the Meeting



You can invite the member registered in the member list, and start the meeting.

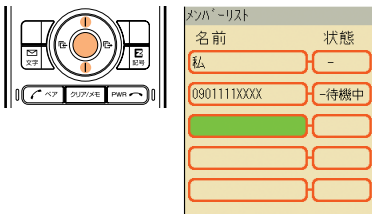
1

Use  to select “スタート (Start)” on the Hello Messenger menu and press  (選択 (Select)).



2


Use  to select “アドレス帳 (Address Book)”. Press  (選択 (Select)) and select the member from the address book along to the on-screen instructions.



▶ Member list screen appears.

▶ Your name (the name registered in the Profile) appears on the first list of the member, and it cannot be deleted/edited.

If you do not register the name in the Profile, the name appears as “私 (Me)”.

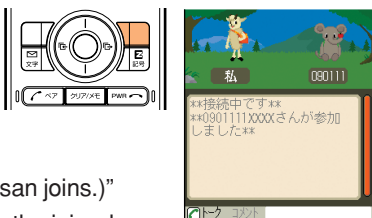
For adding the member, select the member list available, press  (選択 (Select)) and repeat step 2.

3

Press  (お誘い (Invite)).

▶ Invitation messages are sent to the members registered in the member list.

If the message “〇〇さんが参加 (〇〇-san joins.)” appears, you can start the meeting with the joined members.



Information

You can also register the member list from ハローランキング (Hello Ranking) or グループ (Group).



When Receiving the Meeting Invitation

When you receive the meeting invitation, Ringer or Vibrator is activated and the invitation message appears.



However, if you set the ringer mode to “自動応答モード(Auto Answer)”, the invitation is automatically received without any ringer.

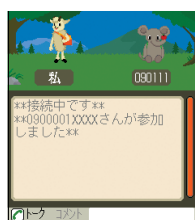
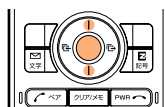
When you receive the meeting invitation:



- ▶ The invitation message appears.



1

Use  to select “参加 (Join)” on the incoming message screen, and press  (OK) to join the meeting.



- ▶ The meeting screen appears and you can join the meeting.
- ▶ You can check the host's name, the total number of members or received date/time on the incoming message screen.
- ▶ If you do not join the meeting, use  to select “不参加 (Not join)” and press  (OK).

Information

- Call notice is not activated from the speaker or the earphone if the Speaker Volume is OFF in the Manner Mode setting.
- The “バイブレータ (Vibrator)” setting in “ハロー着信音 (Hello Ringer)” is prioritized over the Manner Mode setting.



What You Can Do with the Camera



The W33SA has 1.26-megapixel camera which supports shooting photos or movies. The camera incorporates an auto focus mechanism. When you press the shutter key, the image is automatically focused before the photo is shot. Photos and movies which you shot can be sent by E-mail.

Use Shot Photos on the W33SA

It is possible to display the photos you shot on the standby screen, display them when a call comes in and register them in the address book.

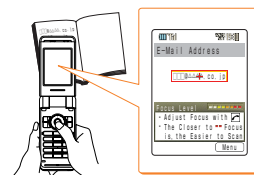
Send Photos/Movies by E-mail (Page 68)

- Photos or movies of a max. 500KB* can be sent by E-mail.
- By using the Photo Mail function, you can send photos/movies to cellphones other than au.

* Mail transfer may take more time depending on the condition of electric waves in the area you are in.

The Character Reader (OCR) Can Be Used

Phone numbers, E-mail addresses, URL and Japanese words can be scanned by the camera. You can register the scanned data to address book. The W33SA has Japanese-English/English-Japanese dictionaries. Using these dictionaries, you can translate the scanned data.



Print Photos You Shot

- Save the photos you shot in miniSD™ Memory Card (commercially available). You can print the photos at photo service shops same as the film developing.
- W33SA provides direct printing of images or shoot items to printers without PC.





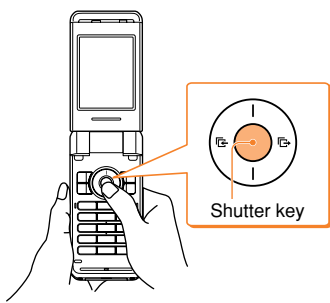
How to Hold the W33SA

■ Upright

Photo : Suited for Mobile/Wallpaper size photos

Movie : Suited for Standard (S/M size), High Quality (M/L size), Long-Time (M/L size, QVGA size (upright))

Hold the W33SA firmly with the right hand and support the right hand with the left hand.




■ Landscape-Oriented Pictures

Photo : VGA/SXGA size

Movie : Long-Time (QVGA size (Landscape-Oriented), VGA size)

Hold the body firmly with both hands to shoot photos.

*You can also shoot photos with W33SA opened.

Hold with proper way so that  appears on the left and shoot the photos.

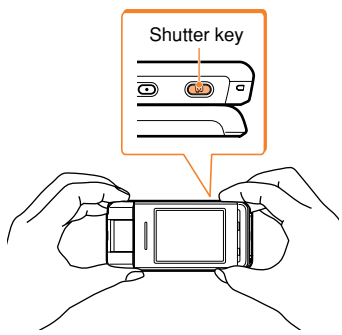


Image-Shooting Posture

Open your feet to the breadth of your shoulders and maintain your back and sides firm.

To Prevent from Jiggling

- Do not move the W33SA after pressing the shutter key until you hear the shutter sound.
- It is possible to shoot a photo using the Self-Timer. By using the Self-Timer, you do not need to press the shutter key at the moment you want to shoot the photo, so you can prevent from jiggling.

Camera



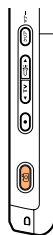
Shooting Photos

1

Press for more than one second while the standby screen is displayed.

▶ The view seen through the lens appears on the main display.

▶ Pressing toggles between the light and flash.

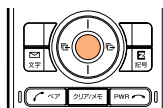


2

Aim at the object and press (Shoot).

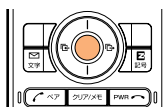
▶ After the camera focuses on the object, you will hear a shutter sound. The photo is shot.

▶ Press to re-shoot the photo.



3

Press (Save).



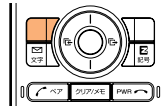
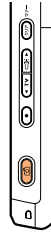
Recording Movies

1

Press for more than one second while the standby screen is displayed and then press (Pict).

▶ The view seen through the lens appears on the main display.

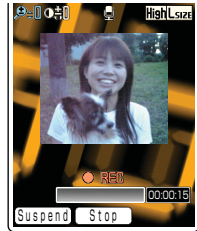
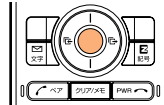
▶ Pressing turns the light ON/OFF.



2

Aim at the object and press (Record).

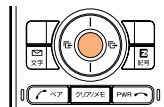
▶ You will hear the shutter sound. When recording starts, “ REC” appears.



(Suspend)	Pauses recording. Recording can be resumed by pressing (Resume).
(Stop)	Stops recording.
(Menu) → Use to select “Play” → (OK)	Plays back the recorded movie.
	Re-records the movie.

3

Press (Save).



■ Title of a Photo You Shot

The Photo Size is set to “Wallpaper Size” at the time of purchase.

Photo Size* ¹	Title of a Photo	Where to Save
Mobile/Wallpaper Size	shooting date_shooting time~serial number	“Photo Folder” of the W33SA
VGA/SXGA Size	SA35 + serial number	“DSC Folder” on the miniSD™ Memory Card* ²

Example : For the first photo shot at 19:30 on December 24 2005

Mobile/Wallpaper Size: 051224_1930*01

VGA/SXGA Size : SA350001

■ Title of a Movie You Shot

The Recording mode (Size) is set to “High Quality (L Size)” at the time of purchase.

Recording Mode (Size)* ³	Title of a Movie	Where to Save
Standard (S Size)	S_recording date_recording time~serial number	“Movie Folder” of the W33SA
Standard (M Size) High Quality (M Size) High Quality (L Size)		
Long-Time (M Size) Long-Time (L Size) Long-Time (QVGA Size (Horz)) Long-Time (QVGA Size (Vert)) Long-Time (VGA Size)	recording date_recording time~serial number	
		“Movie Folder” on the miniSD™ Memory Card* ²



Example : For the first movie shot at 19:30 on December 24 2005

Standard S Size : S_051224_1930*01

Other modes : 051224_1930*01

*1 Press  while the live image appears on the display to change the Photo Size.


*2 Photos and movies are saved in the “Photo Folder” or “Movie Folder” when a miniSD™ Memory Card (commercially available) is not inserted or there is not enough space available on the miniSD™ Memory Card.

*3 Press  (Menu) while the live image appears on the display and select “Recording Mode” to specify Recording Mode and Recording Size. Press  while the live image appears on the display to change the Recording Size.

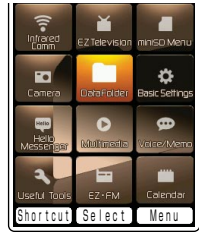
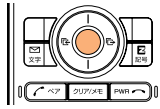


Viewing Photos or Movies



1

Press  (MainMenu) while the standby screen is displayed.

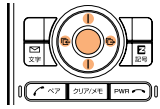
▶ MainMenu appears.





2

Use  to select “Data Folder” and press  (Select).

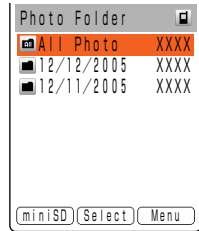
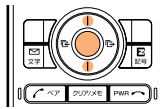
▶ Data Folder list screen appears.





3

Use  to select “Photo Folder” or “Movie Folder” and press  (Select).

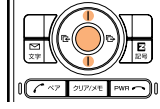
▶ Photo Folder or Movie Folder appears.



4

Use  to select a folder for recorded images and press  (Select).

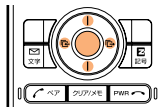
▶ The images appear in reduced sizes.



5

Use  to select an image and press  (Select).




▶ The selected image appears.

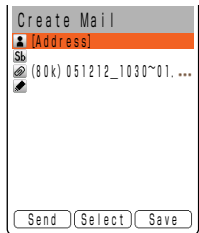
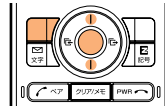


Attaching a Photo or a Movie to an E-mail Message

1 Perform steps 1 and 2 on page 64 or 65 to shoot a photo or record a movie.



2 Press  (E-Mail) and use  to select "YES" and then press .



▶ The Create Mail screen appears with the image attached.

For the subsequent procedure, see steps 3 to 12 on pages 44 to 46.



Camera

Photo Mail

The receiver can view images using "Photo Mail", which automatically converts images to proper size/format when displayed on cellphones other than au.

To use Photo Mail, you need to change the receiver's E-mail address to the relevant Photo Mail address.

You can select "Photo Mail" under the automatic address transfer function to have the receiver's E-mail address automatically converted as follows.



Receiver	E-mail Address	Address After Conversion
DoCoMo	△△△@docomo.ne.jp	△△△@d.nepm.jp
Vodafone	△△△@□.vodafone.ne.jp	△△△@□.vodafone.nepm.jp
TU-KA or au that does not support movie mail	△△△@ezweb.ne.jp	△△△@ezweb.nepm.jp

• □ : differs depending on area.

EZweb subscription required

EZweb



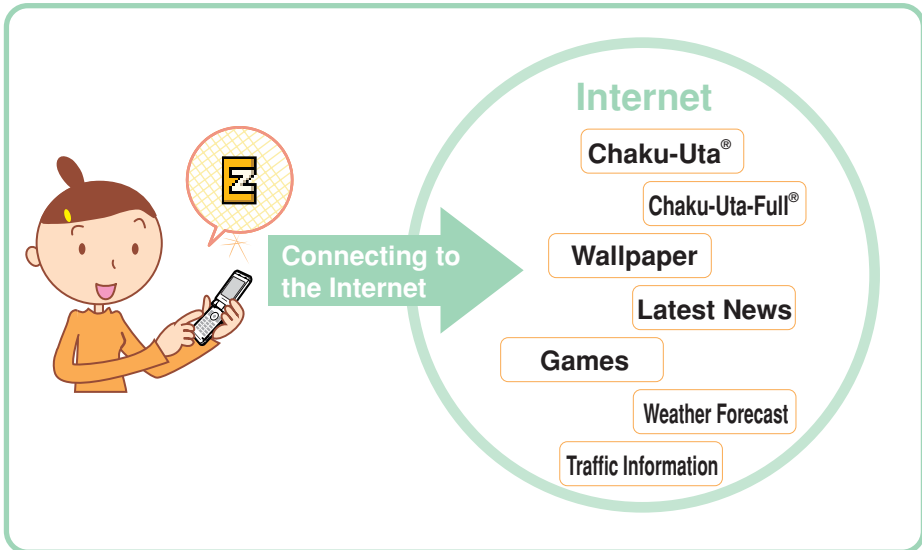
You must subscribe to the EZweb service to use this service. Please contact the au shop or the au Customer Service Center if you did not subscribe to the service at the time of purchase.

Be sure to perform initialization before using the E-mail and EZweb services. If you have not performed initialization yet, see page 22.

EZweb

EZweb is a data service to enjoy the Internet via your W33SA.

Chaku-Uta® and the latest news can be obtained from information sites.

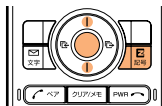


Displaying the EZ Top Menu

1

Press  while the standby screen is displayed.

Use  to select “Top Menu” and press  (Select).



▶ The EZ トップメニュー (EZ Top Menu) appears.

▶ It may take some time to display the screen.



〈EZトップメニュー
(EZ Top Menu)〉

<p>カテゴリで探す (Search by category) Searches for a site by category.</p> <p>キーワードで探す (Search by keyword) Searches for a site with a keyword.</p>
<p>最新情報 (Latest information) Introduces new topics and contents available on EZweb.</p> <p>トップニュース (Top news) The latest top news topics are delivered on an automatic update basis.</p>
<p>ビジネス&ニュース (Business & News information) Provides the latest information such as news, weather, share prices, and other information beneficial for business.</p> <p>エリア (Regional information) Provides weather reports, maps, and other local information.</p> <p>ショッピング & オークション (Shopping & Auction information) Provides information about shopping malls where you can purchase goods with your cellphone and the information about the auction where you can put up or go for easily.</p> <p>ライフ (Check useful daily life information) Provides information beneficial for daily life.</p> <p>ホビー&カルチャー (Hobby & Culture information) Provides the latest information about games, fortune-telling, music, e-book, and information on hobby and entertainment trends.</p>
<p>au style Introduces au-recommended information and sites.</p> <p>とくする情報 (Valuable information) Offers gifts and free valuable information to EZweb service subscribers.</p> <p>EZ サービスで探す (Search by useful EZ services) Accesses recommended fun and convenient sites.</p> <p>料金・申込・インフォ (Charges, application and information) Provides phone bills, application forms, au online manuals, and au information.</p>
<p>災害用伝言板 (Disaster Bulletin Board Service) Registers/checks the safety information in disasters.</p>
<p>ENGLISH Introduces English sites.</p>



N

EZweb

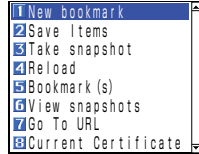
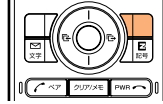
Information

The layout and contents of the screens shown here are only an example and are subject to change.

Bookmarking Frequently-Accessed Sites



1

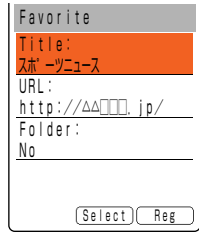
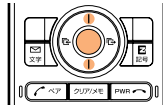
Display the site to bookmark and press  (Browser Menu).



▶ The Browser Menu appears.

2

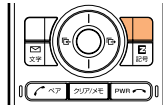
Use  to select “New bookmark” and press  (Select).



▶ The screen for registering the title and URL appears.

3

Press  (Reg).



▶ The currently-displayed site is bookmarked.


▶ Some sites cannot be bookmarked.

Information

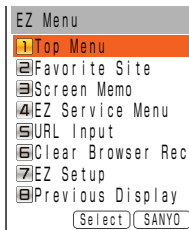
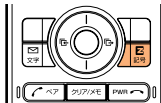
Up to 100 sites can be bookmarked.

Accessing Bookmarked Sites

1

Press  while the standby screen is displayed.

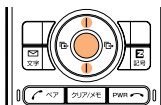
▶ The EZ Menu appears.



2

Use  to select “Favorite Site” and press  (Select).

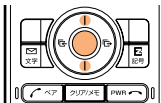
▶ The Favorite Site screen appears.



3

Use  to select a site and press  (Jump).

▶ The selected site appears.



Viewing Charges

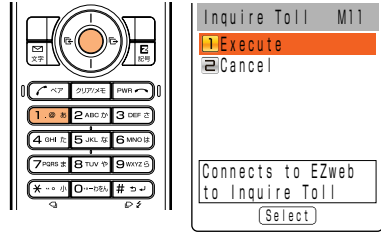
Approximate charges for calls and transmission can be viewed on EZweb.

1

Press **⊙** (MainMenu) while the standby screen is displayed and press

1 . @ あ twice.

- ▶ The Inquire Toll selection screen appears.



2

Use **⊙** to select "Execute" and press **⊙** (Select).

- ▶ The 料金照会 (Charge Inquiry) screen appears. Select the items to view.



Z

EZweb

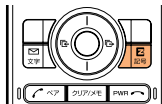
Downloading Chaku-Uta[®]

Example: To download the latest Chaku-Uta[®] and set it for the ringer

1

Press  while the standby screen is displayed.

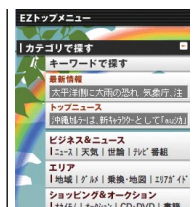
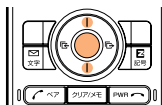
▶ The EZ Menu appears.





2

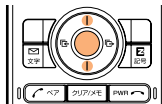
Use  to select “Top Menu” and press  (Select).

▶ The EZ トップメニュー (EZ Top Menu) appears.


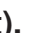


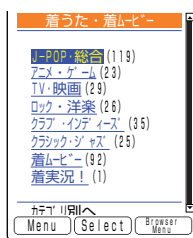
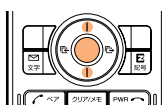
3

Use  to select “カテゴリで探す (Search by category)” and press  (OK).



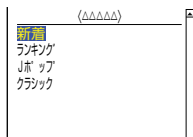
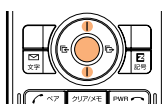
4

Use  to select “着うた・着ムービー (Chaku-Uta・Chaku-Movie)” and press  (Select).



5

Use  to select the site and press  (Select).

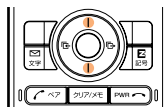


Z

EZweb

6

Use to select and download a Chaku-Uta®.

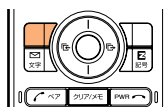


△△△ (XXXk)
Saved to
Data Folder

- ▶ Download the Chaku-Uta® as prompted by on-screen instructions.
 - ▶ When the additional information cost is charged to use the site, you must input your EZ password or Premium EZ password.
EZ password : 4-digit number to be set when you subscribe to the paid contents for the first time.
Premium EZ password : 4-8 digit number to be set when you apply to “まとめてau支払い(Pay in a lump with au cellphone charge)” for the first time.
- Follow the on-screen instructions to input either password. When using it for the first time, perform required password settings.

7

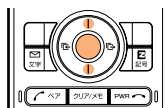
Press (Play) and press (Set).



Set to:
01 Call Ringer
02 E-Mail Ringer
03 Unreg E-Mail Rngr
04 Server Ringer
05 C-Mail Ringer
06 Adrs Bk Indv Rngr
07 Pic-Melody
08 Calender

8

Use to select “Call Ringer” and press (Select).



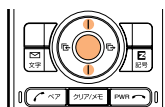
Call Ringer
01 Simple Ringer
02 Random Ringer

Select

- ▶ The Call Ringer selection screen appears.

9

Use to select “Simple Ringer” and press (Select).



- ▶ If you select “Simple Ringer”, only one song set here will be used as the ringer.




Information

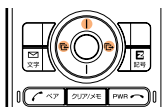
The downloading procedure shown here is an example; it may be different from the actual procedure. Follow the on-screen instructions.

Downloading Chaku-Uta-Full®

EZ“Chaku-Uta-Full®” is a service that allows you to download a whole song with a CD jacket, lyric, etc. You can play back the downloaded Chaku-Uta-Full® with Music Player and use a part of the song as Chaku-Uta® for the ringer.



1

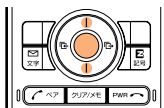
Press  while the standby screen is displayed. Use  to select “ (Chaku-Uta-Full Menu)”.



▶ The Chaku-Uta-Full Menu appears.

2

Use  to select “Jump to EZ Music!” from the Chaku-Uta-Full Menu and press  (Select).



▶ Your W33SA connects to the EZ Music!

▶ Follow the on-screen instructions after connection.

▶ When the additional information cost is charged to use the site, you must input your Premium EZ password. The Premium EZ password is a 4-8 digit number set when you apply to “まとめてau支払い(Pay in a lump with au cellphone charge)” for the first time. When using it for the first time, perform Premium EZ password setting. Be sure to keep your password so as not to forget it.

Information

- The layout and contents of the screens shown here are only an example and are subject to change.
- Chaku-Uta-Full® can also be downloaded by selecting “カテゴリで探す (Search by category)” → “着うたフル(Chaku-Uta-Full)” on the EZ トップメニュー (EZ Top Menu).

EZ Channel

With EZ Channels, the latest contents are distributed and downloaded to the W33SA automatically just by registering the program you want to subscribe to in the W33SA. You can enjoy EZ Channels like watching TV programs or reading magazines.

Displaying EZchannel Menu

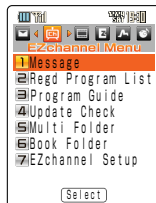


<Standby screen>



<Launcher Menu>

Use to select “EZ Channel Menu”.



<EZ Channel Menu>

Enjoying EZ Channel

1 Register the program you are interested in.

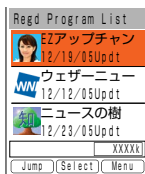
You can register maximum 3 programs you are interested in from the “番組ガイド” (Program Guide).

The registered programs are downloaded automatically from late at night through to early in the morning, and saved in “Regd Program List”.



2 Play the registered programs.

You can play downloaded programs saved in the “Regd Program List” anytime you want.



©KDDI/mediba
©weathernews
©時事通信/アクセス・パブリッシング



©KDDI/mediba



3 Save the program.

Newly downloaded programs overwrite the existing data. Therefore, in order to save a specific program, move it to the “Multi Folder”.

• Some programs cannot be saved because of copyright protection.



Information

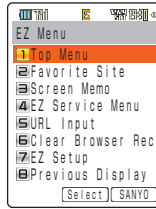
- Perform initialization before using the EZ Channel service. If you have not performed initialization yet, see page 22.
- With EZ Channel, a single program download can be as much as 3MB of data. It is recommended that you subscribe to the discount service of packet communication fees.
- The program starts being downloaded automatically when the broadcasting start time arrives. Turn fully charged W33SA ON in a location where signals can be picked up.
- The layout and contents of the screens shown here are only an example and are subject to change.

EZweb subscription required

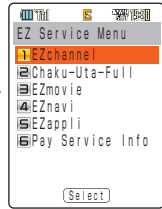
What You Can Do with EZnavi



EZnavi offers convenient location information (GPS) services.



Use to select "EZ Service Menu" and press (Select).



<EZ Menu>

<EZ Service Menu>



<Launcher Menu>

Use to select "EZnavi".

Use to select "EZnavi" and press (Select).



<EZnavi screen>

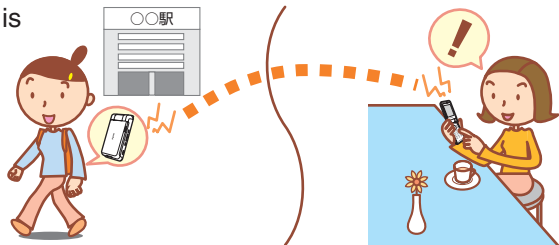
"Position Search(安心ナビ位置確認)" to Check Where Your Kids Are

You can locate an au cellphone that supports Position Search from your W33SA. The "位置確認メール(Position Search Mail)" (free service) and "いつでも位置確認(Auto Position Search)" (pay service) services are available.



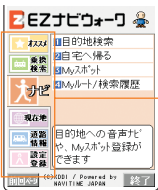
"Area Message(安心ナビエリア通知)" to be informed in a specific time zone and area

Transmission of information is notified by alarm when getting to (getting out of) the pre-specified area in the pre-specified period of time, and a message is automatically sent to a specific au cellphone.



“EZ Navi Walk” for When You Go Out

Displays various menus that are useful when you are out.



オススメ (Recommended)	Provides the latest or useful information ・“おためしナビ(Trial Navigation)” demonstrates the cellphone's voice navigation system.
乗換検索(Connection Search)	It is possible to search train exchange and train timetable.
ナビ(Navigation)	Provides voice directions to a target destination. You can also register “MySpot”.
現在地(Where You Are)	You can view a map or search for shops around your present location.
道路情報(Traffic Info)	Check real-time traffic information on the major roads all over Japan.
設定登録(Settings and Registration)	You can make settings and register for memberships.

Return Home

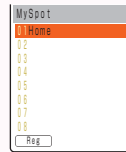
Search result screen



Select
“ルート案内開始
(Start Navigation)”
and press ●.

By registering the location of your home in advance, the EZ Navi Walk service can navigate you to your home wherever you are.

MySpot



By registering any place where you go frequently or your home, the EZ Navi Walk service can navigate you easier.

View My Map

Map screen



The first positioning result is indicated by a ★.
After that, your present location will be shown as ● in real-time by continuous positioning.

Your W33SA can display the map of your present location in real-time, by simply selecting “現在地マップ(View My Map)”.

E-Mail My Map



Send Mail

I'm Here



When you meet someone, it is possible to inform the other party of where you are by E-mail.

Information

Information fees and packet communication fees are charged to use EZnavi.





What You Can Do with Security Navi

What You Can Do with Position Search

When your kids are coming home late or getting lost, you can check the current location of your kids with easy operation. The Position Search provides two services of “位置確認メール (Position Search Mail)” and “いつでも位置確認 (Auto Position Search)”.

位置確認メール (Position Search Mail)



● Features

- Mothers can send a mail with a message to their kids.
- Kids will check the message from their mother and notify the current location where they are.

Example : When the mother sends a mail to her kid

いつでも位置確認 (Auto Position Search)



● Features

- Provides the current location of the kids automatically without any operation by the kids when the mother searches them. It is recommended for little kids who are hard to handle cellphones.

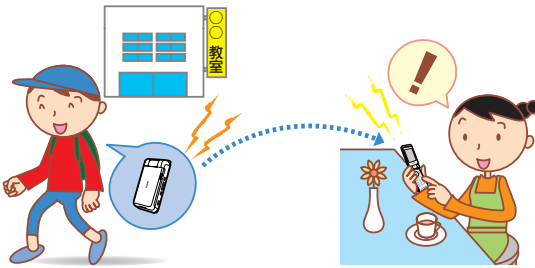
Example : When the mother sends a mail to her kid

- Additional monthly charge is required.

What You Can Do with Area Message

Transmission of information is notified by alarm when getting to (getting out of) the pre-specified area in the pre-specified period of time, and a message is automatically sent from the kid's au cellphone to the mother's.

エリア通知 (Area Message)



Example : When the mother checks the area of her kid

● Features

- Feel easy even when your kid is out to the after-school lessons or on his/her way home. Location information is notified from the kid's au cellphone to yours automatically when your kid is getting through the specified location.

Information

- “安心ナビ(Security Navi)” service is only for use between service compatible phones.
- Positioning location or Viewing maps requires additional packet communication fee.
- Be sure to confirm and agree the Terms of Use before using “安心ナビ(Security Navi)”.
- The other party is also required to agree the Terms of Use.
- Please make the settings of the Navi Password in advance to use “安心ナビ(Security Navi)”.
- Positioning location is not available under following conditions; out of service area, setting Incoming Reject, no application, under operation, or no-compatible phones.
- The screen is only an image and may differ from the actual screen.
- When you stop the C-mail service, “安心ナビ(Security Navi)” is not available.
- Notifying mail fee is not included in the discount service of Family C-mail and packet communication fees.



EZweb subscription required

EZ Television (1Seg)



You can enjoy EZ Television (1Seg) compatible to Digital Terrestrial Broadcasting for Mobile Television Service (1Seg) with W33SA. Data Broadcasting Programs are also available other than watching TV programs with EZ Television (1Seg).

What You Can Do with EZ Television (1Seg)

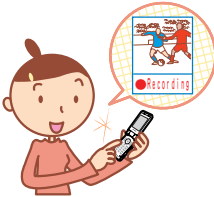
Watching Programs of Digital Terrestrial Broadcasting for Mobile Television Service (1Seg)



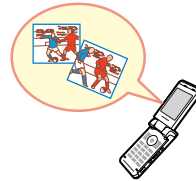
Watching the Data Broadcasting Programs



Recording TV Programs



Capturing the Program as Still Image



Digital Terrestrial Broadcasting for Mobile Television Service (1Seg)

Digital Terrestrial Broadcasting provides the programs of the digitalized Analog Terrestrial Broadcasting which started in Kanto/Chu-kyo/Kinki areas centered around Tokyo/Nagoya/Osaka from December, 2003. (The digital broadcasting will start in other areas by the end of 2006.) And Data Broadcasting service is also available. There is also a service called Mobile Television Service (1Seg), which, by using a part of the electric waves of Digital Terrestrial Broadcasting, enables you to watch TV or Digital Broadcasting with cellphones or other mobile devices just like you watch them at home.

1Segment Broadcasting (1Seg) is called "1Seg" since the service divides the 6MHz wave range of Digital Terrestrial Broadcasting into 13 segments and uses the one segment to broadcast. You can watch the Digital Terrestrial Broadcasting for Mobile Television Service (1Seg) with W33SA.

Digital Terrestrial Broadcasting programs or Digital Terrestrial Broadcasting for Mobile Television Service (1Seg) are broadcasted on the UHF electric wave of Analog Terrestrial Broadcasting.



Digital Terrestrial Broadcasting for Mobile Television Service (1Seg) starts in Tokyo/Nagoya/Osaka and some other areas by turns on April 1st, 2006. Refer to the details of the "1Seg" service to the homepage etc. below.
The Association for Promotion of Digital Broadcasting <http://www.d-pa.org/>

Data Broadcasting

EZ Television (1Seg) is available in Data Broadcasting in addition to video images or sound, which provides the useful or relating information to programs with text.

Displaying Television Programs



Displaying Data Programs

The contents of Data Broadcasting Programs differ from stations or programs. Follow the on-screen instructions.

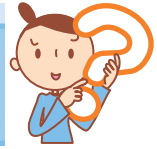
Information

- Perform initialization before using this service. If you have not performed initialization yet, see page 22.
- No packet communication or other charges are billed as long as you are just watching EZ Television (1Seg). However, you will be charged for packet communication if you access a program guide or song title search services.
- No packet communication or other charges are billed as long as you are just watching data broadcasting programs. However, you will be charged for packet communication if you use the interactive service provided on data broadcasting programs or access the information sites of EZweb.
- When the battery level is “”, you cannot start the EZ Television (1Seg).
- If the battery level changes to “” during use of the EZ Television (1Seg), the EZ Television will end automatically.
- The continuous audible time in the W33SA is as follows:
Approximately 2 hours and 45 minutes (Outputting from the earphone)
Approximately 2 hours and 30 minutes (Outputting from the speaker)
However, it is subject to change due to the operation of the data broadcasting.
- The layout and contents of the screens shown here are only an example and are subject to change.



EZweb subscription required

EZ Television (A)



You can watch and record TV programs on the W33SA.

- With EZ Television (A), you can watch Analog Terrestrial Broadcasting in Japan.
- The EZ Television (A) service expires upon termination of the W33SA subscription.

What You Can Do with EZ Television (A)

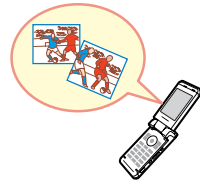
Watching TV



Recording TV Programs



Saving Still Images



Antenna Available for W33SA

To watch the EZ Television, use antennas for optimal reception of airwaves.

There are two types of available antennas: Antenna (EZ Television/EZ·FM Reception) included in the W33SA and SANYO Flat-type Stereo Earphones 03.

◆ When watching the VHF channel

Extend the W33SA Antenna (EZ Television/EZ·FM Reception) or connect SANYO Flat-type Stereo Earphones 03; you will then experience an improved reception of airwaves.

◆ When watching the UHF channel


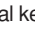
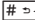
Extend the W33SA Antenna (EZ Television/EZ·FM Reception).



Viewing and Operating the EZ Television Screen

● Channel indicator

The current channel is displayed.

Use , the dial key,  * 00 小, or  # コマ to change the channel.

● Information window


Information from the current broadcast station is displayed.

● Program information window

The name and on-air time of the current program are displayed.



● Volume indicator

The current volume level (in 21 steps, including mute) is displayed. Use  to adjust the volume level.

● Earphone display

This is displayed when “スピーカー切替(Switch Speakers)” is set to “イヤホン(Earphones)”.

● Screen size switch

Press  to switch to full-screen display.

< Full-screen display >





©KDDI powered by NANO Media Inc.

For Better EZ Television Reception

Deteriorated image, poor sound quality or reception failure may occur in mountains, near buildings, in underpasses, in tunnels, or indoors because of poor TV reception. To improve the reception of airwaves, try the following:

- The W33SA Antenna (EZ Television/EZ·FM Reception) and SANYO Flat-type Stereo Earphones 03 serve as an antenna. Extend the W33SA Antenna (EZ Television/EZ·FM Reception), or connect SANYO Flat-type Stereo Earphones 03 and strain the earphone cord, and then turn it towards the direction where reception is best.
- When you are indoors, take your W33SA as close to a window as possible.

Information




- Perform initialization before using this service. If you have not performed initialization yet, see page 22.
- No packet communication or other charges are billed as long as you are just watching EZ Television (A). However, you will be charged for packet communication if you access a program guide or song title search services.
- When the battery level is “”, you cannot start the EZ Television (A).
- If the battery level changes to “” during use of the EZ Television (A), the EZ Television (A) will end automatically.
- The continuous audible time is about 1 hour in the W33SA. After 1 hour of starting the EZ Television (A), the EZ Television (A) ends automatically.
- The layout and contents of the screens shown here are only an example and are subject to change.

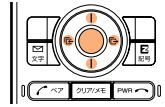


Watching EZ Television (A)

When using EZ Television (A) for the first time, take the following steps to configure your W33SA.



1

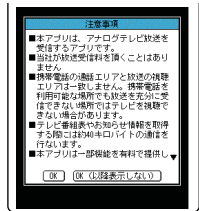
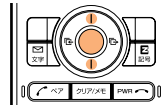
Press  (Main Menu) while the standby screen is displayed. Use  to select “EZ Television” and press  (Select).



▶ The Main Menu appears.




2

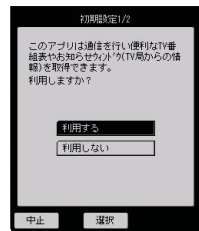
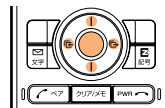
Use  to select “EZ Television (A)” and press  (Select).



▶ 注意事項(Cautions) screen appears.



3

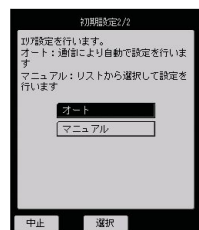
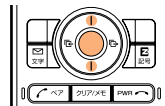
Use  to check the cautions. Use  to select “OK” and then press .



▶ 初期設定 1/2(Default settings 1/2) screen appears.

4

Use  to select “利用する(Use)” and press  (選択(Select)).





▶ 初期設定 2/2(Default settings 2/2) screen appears.

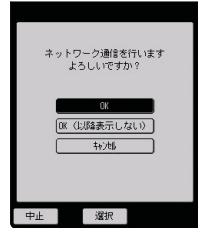
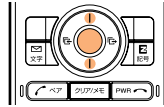
▶ Selecting “利用しない(Not Use)” disables your ability to view the program listing or Information window.






5

Use  to select “オート(Auto)” and press  (選択 (Select)).

- Select “マニュアル(Manual)” to set the area manually.

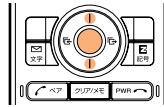


6

Use  to select “OK”, press  (選択 (Select)) and then press  (OK).

Use  to select “OK” and press  (選択 (Select)).




- The reception area and channels are set automatically. The EZ Television screen appears.
- If you select “OK (以降表示しない(not displayed after this time))”, the communication confirmation screen will not appear at time of communication.



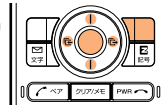
©KDDI powered by NANO Media Inc.

Switching between the Earphones and Speakers




1


While EZ Television (A) is activated, press  (メニュー (Menu)). Use  to select “スピーカー切替 (Switch Speakers)”, and then press  (選択 (Select))

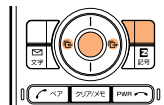
- スピーカー切替 (Switch Speakers) screen appears.



2

Use  to select “イヤホン (Earphones)” or “スピーカー (Speakers)” and press  (設定 (Set)) and then press  (OK).

- Press  (戻る (Return)) to return to the EZ Television screen.



EZ Television (Analog)


Information

It is set to “スピーカー (Speakers)” at the time of purchase.

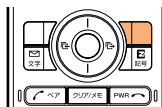
Recording the TV Program

1

While TV program is displayed, press


 (メニュー (Menu)).

▶ Menu screen appears.

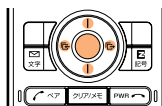


©KDDI powered by NANO Media Inc.


2

Use  to select “録画 (Recording)” and press

 (選択 (Select)).


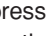



3

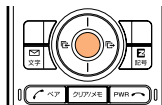
Press  (録画開始 (Start Recording)).

▶ The recording starts.



▶ You can select the recording size.

▶ Press  (画像保存 (Save Image)) and then press  (はい (Yes)) to save the displayed image on the screen as a still image.

▶ Even during movie recording, up to 9 still images from the movie can be saved. Press  (画像保存 (Save Image)) to save the image on the screen as a still image.

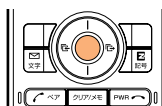


4

Press  (録画停止 (Stop Recording)) and press  (OK).

▶ The recorded data is saved automatically.

▶ Recording stops when the maximum recording time expires. The recorded data is saved.



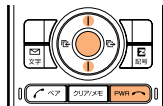
Information

- Movies are stored in the “Analog” folder in the “EZ Television” folder and still images are stored in the “Graphics” folder.
- Recording may be impossible if the data folder does not have enough space available.
- Recording times are subject to change due to the available space in the data folder or the contents of the programs to record. Record the data referring to the onscreen time in recording as a guide.
- Maximum recording times with maximum available space in the data folder (approximately 48.5 MB) are as follows:
For 240 (H) x 320 (W) dot screen: Approximately 24 minutes
For 180 (H) x 240 (W) dot screen: Approximately 40 minutes
- The title of the data is saved as the “TV_start recording date_start recording time~serial number”.
Example: For the first data recorded at 19:30 on December 24, 2005
TV_051224_1930~01
- EZ Television (A) allows you to find programs from an electronic program guide or get the title of the song currently on the air (song title search function: pay service).
- Still images or movie clips from a TV program are stored as protected by the copyright laws. They cannot be attached to E-mails, copied or moved to external devices. Neither can they be registered for standby screen and other functions.

Ending EZ Television (A)

1

Press . Use  to select “End” and press  (OK).



EZ·FM




You can listen to the FM radio on the W33SA. The audio broadcasted over the FM radio can be recorded.

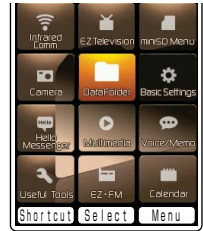
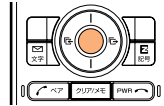
Antenna Available for W33SA




To listen to the EZ·FM, use antennas for optimal reception of airwaves. There are two types of available antennas: Antenna (EZ Television/EZ·FM Reception) included in the W33SA and SANYO Flat-type Stereo Earphones 03. Extend the W33SA Antenna (EZ Television/EZ·FM Reception) or connect SANYO Flat-type Stereo Earphones 03; you will then experience an improved reception of airwaves.

Listening to EZ·FM

- 1 Press  (MainMenu) while the standby screen is displayed.

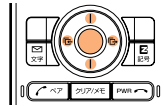
▶ The Main Menu appears.



- 2 Use  to select "EZ·FM" and press  (Select). Press  on the confirmation screen.

▶ The EZ·FM screen appears.

▶ When you activate the EZ·FM for the first time, the screen appears, on which you can select your area. Select your location area.



EZ·FM

Information

- Perform initialization before using this service. If you have not performed initialization yet, see page 22.
- Packet communication fees are not charged for the EZ·FM listening. Services such as NOW ON AIR charge packet communication fees.
- The audio broadcasted over the FM radio can be recorded.
- The layout and contents of the screens shown here are only an example and are subject to change.

■ Viewing and Operating the EZ·FM Screen

Tuning and other operations are possible from the EZ·FM screen.

- Press on the EZ·FM screen and use to select an area. Press to start an operation in the selected area.

<EZ·FM screen>



Function keys

● Frequency

Pressing tunes the frequency in 0.1 MHz.

Press for more than one second to automatically tune in the nearest station.

● Start/Stop recording

Audio broadcast on EZ·FM can be recorded.

● NOW ON AIR display

This area displays information such as the performer name and song title of the broadcast song.

- Some programs do not provide information.

Normally, the station name appears in the display area.

Pressing changes the station.

▶ Notes on Volume Adjustment

The volume can be adjusted in 10 levels from 1 to 10, or muted.

Press to increase the volume.

Press to decrease the volume.

Press for more than one second to mute the volume.

■ For Better EZ·FM Reception

To improve the reception of airwaves, try the following:

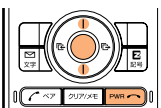
- The W33SA Antenna (EZ Television/EZ·FM Reception) and SANYO Flat-type Stereo Earphones 03 serve as an antenna. Extend the W33SA antenna (EZ Television/EZ·FM Reception), or connect SANYO Flat-type Stereo Earphones 03 and strain the earphone cord, and then turn it towards the direction where reception is best.
- When you are indoors, take your W33SA as close to a window as possible.



Ending EZ·FM

1

Press . Use to select “End” and press (OK).



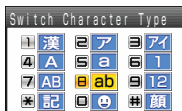
Inputting Text



Switching the Input Mode

On the character input screen, press to display the input mode selection screen.

Use to select an input mode and press (OK).



Entering Single-byte Alphanumeric Characters

You can use the key to to enter characters. The characters appear as shown in the following table each time the indicated key is pressed.

Example: The characters appear in the order of “a”, “b”, “c”, “2”, “a”, “b” and so on, each time you press the key. When the desired character appears, press the key of the character to enter next.

Key	Lowercase character input mode								Uppercase character input mode							
	Number of presses								Number of presses							
	1	2	3	4	5	6	7	8	1	2	3	4	5	6	7	8
	.	@	-	_	/	:	~	1	.	@	-	_	/	:	~	1
	a	b	c	2					A	B	C	2				
	d	e	f	3					D	E	F	3				
	g	h	i	4					G	H	I	4				
	j	k	l	5					J	K	L	5				
	m	n	o	6					M	N	O	6				
	p	q	r	s	7				P	Q	R	S	7			
	t	u	v	8					T	U	V	8				
	w	x	y	z	9				W	X	Y	Z	9			
	0								0							
	Switches between uppercase and lowercase characters.															
# key"/>	Shifts to the previous character assigned to that same key (when the current character has yet to be entered), or inputs a line break if possible (when the current character has been entered).															

Information

Up to 20 lowercase characters including a “-”(hyphen) and “.”(period) can be used for your E-mail address. However, “.” cannot be used consecutively or at the beginning or end of an address. Also, “0” cannot be used at the beginning of an address.

The characters and symbols in the gray cells () cannot be used before the “@” as in “△△△@ezweb.ne.jp”.

■ Consecutively Entering Characters of the Same Key

After entering the first character, press  then the next key.

Example: Entering “ab”



■ Erasing Characters

Press  to erase a character.

Press  for more than one second to erase all characters after the cursor ().

All characters are erased when the cursor () is at the end of the text.

Information

Pressing  (Undo) immediately after erasing text displays the erased text again.

Entering E-mail Addresses

Example: To enter “taro@ezweb.ne.jp” using the Phrase

1

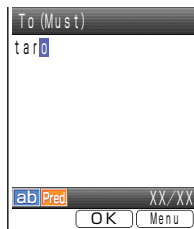
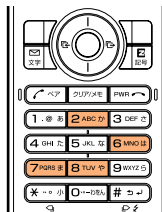
Enter “taro”.

t : Press **8 TUV ㊦** once.

a : Press **2 ABC ㊦** once.

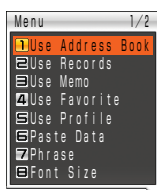
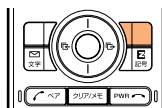
r : Press **7 PQRS ㊦** 3 times.

o : Press **6 MNO ㊦** 3 times.



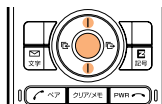
2

Press **☰ (Menu)**.



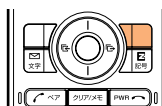
3

Use **⦿** to select “Phrase” and press **⦿ (OK)**.



4

Use **☰ (Category)** to select “Internet”.



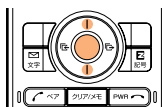
Press **⦿** or *** ㊦ / # ㊦** to switch to the next list.

5

Use **⦿** to select “@ezweb.ne.jp” and press **⦿ (Select)**.


▶ “@ezweb.ne.jp” is entered.

▶ Press **1 ㊦** once to enter “.” and twice to enter “@”.

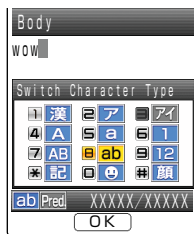
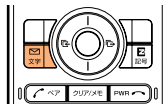


Entering Pictographs




1


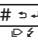
Press  at the character input screen.

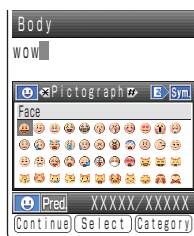
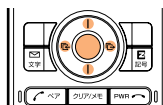
- ▶ The input mode selection screen appears.





2



Use  to select “” and press  (OK).

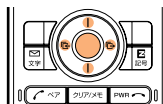
- ▶ The pictograph list screen appears.
- ▶ Press  or  to switch to the next pictograph list.



3

Use  to select a pictograph and press  (Select).

- ▶ The selected pictograph appears on the character input screen.
- ▶ It is possible to consecutively enter pictographs by pressing  (Continue) instead of  (Select).



Information

Pressing  (Category) from the screen in step 2 can switch categories.

In Case You Lose Your W33SA



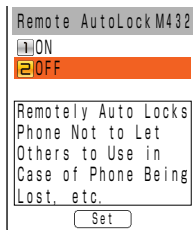
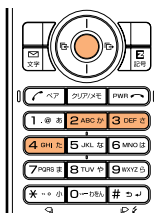
The Remote Auto Lock function enables you to lock your W33SA through remote operation so that no one else can use your W33SA.

Setting the Remote Auto Lock Activation Conditions

Making several incoming calls to the W33SA from the registered phone number within the specified time activates Auto Lock.


1 Press  (MainMenu) while the standby screen is displayed and press

  .






2 Press  to select “ON” and press  (Set) and then enter your Lock No.

▶ Lock No. is set to “1234” at the time of purchase.

3 Press  to select “Duration (min)” and press  (Select).
Enter Duration and press  (Set).



▶ Duration (min) : Sets the time limit to receive the specified number of missed calls.
It can be set between 1 and 10 minutes.

4 Press  to select “Incm Call Ct” and press  (Select).
Enter Incoming Call Count and press  (Set).

▶ Incm Call Ct : Sets the number of incoming calls required for activating Remote Auto Lock.
It can be set between 3 and 10 times.




5

Press  (PhoneNo.) and press  (Select).

6

Press  to select “Direct Entry” and press  (OK).
Enter a phone number and press  (OK).

 You can also select “Use Address Book” to enter phone numbers.
Up to 3 phone numbers can be registered.


7

Press  (Comp) and press  (Save).

Activating Auto Lock on the W33SA through Remote Operation

1

Call your W33SA in the above setting for Remote Auto Lock.

 Remote Auto Lock is activated and you will hear a message telling that it has been activated.





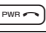
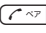
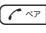

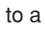

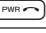


Information

Remote Auto Lock cannot be activated if the W33SA is not powered on or is under area with bad reception.




Troubleshooting



Symptom	What to Check	Solution	Page
Cannot turn the power ON.	Is the battery pack charged?	Charge the battery pack.	14
	Did you press  for more than one second?	Press  for more than one second.	15
Cannot make a call.	Does  appear on the screen?	Try making the call again at the place where  does not appear on the screen.	15
	Did you include the area code?	If you are making a call to a phone other than a cellphone, include the area code, even when calling from the same city.	26
	Is the power turned ON?	Press  for more than one second.	15
	Did you press  ?	Press  after entering the phone number.	26
Cannot receive calls.	Does  appear on the screen?	Move to a place where  does not appear on the screen.	15
	Is the power turned ON?	Press  for more than one second.	15
The battery runs out in a short time.	Do you use "EZ Television", "Hello Messenger" or "Music Player" for a long time?	"EZ Television" or other EZ apps (BREW [®]) may consume the large amount of the battery. Please be forewarned that "Hello Messenger" or "Music Player" also requires the large amount of the battery.	—
Keys do not respond.	Is the power turned ON?	Press  for more than one second.	15
The power is turned off after an alarm sounds.	The battery pack level is low.	Charge the battery pack.	14
Calls are answered automatically.	Is the Answer Phone ON?	Press  for more than one second to turn the Answer Phone OFF.	32
Cannot hear the other party's voice.	Is the receiver volume setting high enough?	Press  while talking. The volume of the other party is increased.	31

For detailed information, visit the company homepage of SANYO Electric Co.,Ltd.

- From W33SA → Press  for more than one second. (SANYO Keitai Planet)
- From PC → <http://www.sanyo-keitai.com> (SANYO Keitai Arena)



Other Features



The W33SA is provided with other useful features.

Front Style

You can shoot the photos or movies in the digital-camera like style, or watch the EZ Television in a wide screen.

Various Multi-media Function

The functions of the music player supporting SD-Audio format or the video player to enjoy the video movies recorded by DVD Recorder are available.

Auto Cursor Move

By setting this function, the cursor moves automatically to the right without pressing the cursor while entering characters on the screen.

Infrared Data Exchange Feature

Infrared data exchange feature (IrDA) allows you to exchange address book information and files in the data folder.

with Disney!

You can convert the wallpaper, ringer, images on the sending/receiving screen and Main Menu into Disney Character all at once.

EZ apps (BREW®)

You can enjoy various applications, including high-volume games rich in expressive features and standby applications.

バーコードリーダー&メーカー

(BARCODE READER&MAKER)

By recording a bar code (JAN code, QR code) with the W33SA, it is possible to read bar-coded characters. The read information can be used for the address book or mails.

アプリモコンEZ (applimocon EZ)

Using the infrared data exchange feature, you can remotely operate the TV, video recorder, or DVD player.

Mass Storage Mode

By connecting the attached USB Cable WIN (sold separately) to a personal computer, it is possible to use the miniSD™ Memory Card provided with the W33SA just like other storage media. It is very useful as it makes it easier to exchange data with personal computers.

Powerful Dictionary Features

English-Japanese, Japanese-English and Katakana-English dictionaries are installed in the W33SA. These dictionaries can be very useful as you can also translate English into Japanese and vice versa while entering characters.



Index

A

Accessories	10
Address Book	34
Edit	38
Make a Call	37
Register	34
Register Data from Outgoing/ Incoming Calls	40
Address Filter	5, 52
Adjust the Other Party's Voice Volume	31
Answer Calls	26
Answer Phone	3, 32
Play Back/Erase	33
Antenna (EZ Television/ EZ·FM Reception)	11, 84, 90
Area Message	78, 81

B

Basic Operation	18
Battery Level	3, 15
Battery Pack	10, 11, 14
Bookmarks	72

C

Call Back	27
Call Notice	15
Caller ID	15, 26
Camera	64
Attach a Photo or a Movie to an E-mail Message	68
Record Movies	65
Shoot Photos	64
View Recorded Photos or Movies	67
Chaku-Uta®	74
Chaku-Uta-Full®	76
Charge the Battery Pack	13, 14
C-mail	53
C-mail Safe Block Function	53
Create and Send	54
Read	56, 57

D

Desktop Holder	10, 14
Disaster Bulletin Board Service	6
Download	74, 76
Drive Mode	4

E

Electric Waves Reception	3, 15
E-mail	43
Attach a Photo or a Movie	68
Create and Send	44
Initialization	22
Read	47, 49
Reply	50
View Received Photos or Movies	48
E-mail Address	22, 23
Change	24
Confirm	23
Enter	94
EZ apps (BREW®)	21, 99
EZ“Chaku-Uta-Full®”	76
EZ Channel	77
EZ·FM	21, 90
End	91
Listen	90
EZ Navi Walk	79
EZ Television (A)	84
End	89
Record	88
Switch between the Earphones and Speakers	87
Watch	86
EZ Television (1Seg)	82
Data Broadcasting	83
Digital Terrestrial Broadcasting	82
Digital Terrestrial Broadcasting for Mobile Television Service (1Seg)	82
EZweb	21, 69
EZ Password	75
EZ Top Menu	70
Initialization	22
Premium EZ Password	75

F

Flexible Keys	11, 18
Font Size	15
Front Style	20, 63, 99

H

Hello Messenger	21, 58
Display Menu	59
Invite Member to the Meeting	60
Receive the Meeting Invitation	61
How to Use the Keys	18

I	
Icons	21
ID Unsent	26
Incoming Calls	27, 40
Incoming Illuminator	11, 14
Information Sites	69
Initialization	22
Input Mode	92
Input Text	92

J	
Junk Mail	5, 52

L	
Launcher Menu	19
Lock No.	15

M	
Mail	
C-mail	53
E-mail	43
Mail Filter	5, 52
Main Menu	19
Make Calls	26
Make a Call from the Address Book ...	37
Make Side Key Operation Invalid	5
Manner Mode	3, 31
Drive Mode	4
Manners for Using Cellphones	1
miniSD™ Memory Card	12, 21
Missed Calls	26
Movie	
Attach to an E-mail	68
Record	65
Recording Mode	66
View	67

N	
Names of Parts	11
Noise Filter	10, 13

O	
One-Ring Calls	5, 27
Outgoing Calls	27, 40

P	
Pair Function	41
Make a Call to the Popular Contact ...	42
Register a Popular Contact	41
Send a Mail	42
Phone Number	23, 26

Photo	
Attach to an E-mail	68
Photo Size	66
Shoot Photos	64
View	67

Photo Mail	68
-------------------------	----

Phrases	94
----------------------	----

Pictographs	95
--------------------------	----

PIN number	24
-------------------------	----

Play Back	
Answer Phone	33
Movie	67
Photo	67
Program	77

Position Search	78, 80
------------------------------	--------

Power	3, 15
--------------------	-------

R	
----------------	--

Recording Oneself Style	20
--------------------------------------	----

Remote Auto Lock Setting	96
---------------------------------------	----

Ringer	
Adjust Ringer Volume	30
Change Ringer Type	28

S	
----------------	--

SANYO Flat-type Stereo	
-------------------------------------	--

Earphones 03	10, 84, 90
--------------------	------------

Set Language	16
---------------------------	----

Site	
Access Bookmarked Sites	72
Bookmark Sites	71

Standby Screen	15, 19
-----------------------------	--------

T	
----------------	--

Top Menu	70
-----------------------	----

Troubleshooting	98
------------------------------	----

U	
----------------	--

Unsolicited Ad Mail Filter	5, 52
---	-------

V	
----------------	--

View Charges	73
---------------------------	----

W	
----------------	--

What You Can Do with EZnavi	78
--	----

What You Can Do with	
EZ Television (A)	84

What You Can Do with	
EZ Television (1Seg)	82

What You Can Do with Security Navi ...	80
---	----

What You Can Do with the Camera	62
with Disney!	99



For inquiries, call:

au Customer Service Center (General Information)

From EZweb:

Access No.



or EZ ▶ Top Menu ▶ 料金・申込・インフォ
(Charges, application and information)

▶ お問い合わせ (Inquiry)

※ Menu is subject to change.

From regular phones:

 **0077-7-111**

(Toll free)

From au cellphones:

157 area code not required

(Toll free)

Pressing "zero" will connect you to an operator,
after calling "157" on your au cellphone.

Sales : KDDI CORPORATION •

OKINAWA CELLULAR TELEPHONE COMPANY


Manufactured by : SANYO Electric Co., Ltd.

October 2005 Edition

Access the au online
manual from here.



モバイル・リサイクル・ネットワーク
携帯電話・PHSのリサイクルにご協力。

Cellphone and PHS operators collect and recycle unused telephones,
batteries and battery chargers at stores bearing the  logo
regardless of brand and manufacturer to protect the environment
and reuse valuable resources.