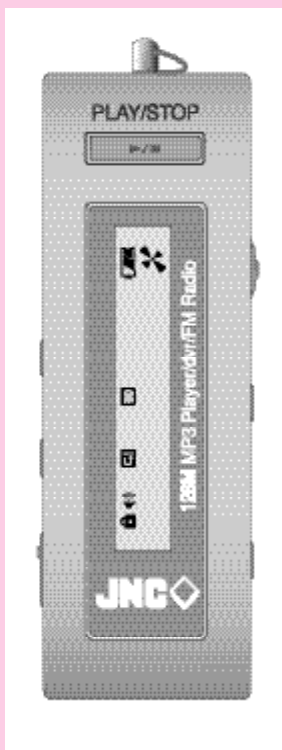


PORTABLE DIGITAL AUDIO PLAYER
MODEL : SSF-9/SSF-964



INSTRUCTION MANUAL



Thank you for purchasing PORTABLE DIGITAL AUDIO PLAYER from DATUM NETWORKS CORP. LTD. Please carefully read the Instruction manual for safe use of the product. We recommend you to keep this instruction manual for future reference.

INFORMATION TO THE USER

WARNING

Changes or modifications not expressly approved by the manufacturer could void the user's authority to operate the equipment.

This device complies with Part 15 of the FCC Rules. Operation is subject to the following two conditions: (1) this device may not cause harmful interference, and (2) this device must accept any interference received, including interference that may cause undesired operations.

COPYRIGHT

DATUM NETWORKS CORP. LTD. has all the copyrights for this instruction manual.

It is against the copyright law to make unauthorized copies, translate and publish material without prior authorization from DATUM NETWORKS CORP. LTD. All the information written in this instruction manual was produced with our company's careful caution, but they can be changed without any prior notification. Any differences between product and manual due to the cause of change the responsibility will not fall under our company.

CONTENTS

1. SSF-9/SSF-964 SERIES

1) Notes for using	3
2) About SSF-9/SSF-964 SERIES	4
3) Function and Feature	5
4) Name of each part and LCD display	6
5) Use of battery and component of package.	7
6) Use of basic functions	9
7) Use of buttons	12
8) Operating dial menu	14
9) Recording from voice record property	17
10) Deleting	19
11) Connecting to a exterior devices	20
12) Receiving FM radio function	21

2. DIGITAL AUDIO MANAGER AND MAIL MANAGER

1) What is DIGITAL AUDIO MANAGER?	22
2) Connecting SSF-9/SSF-964 SERIES and setting up DIGITAL AUDIO MANAGER	23
3) Component of DIGITAL AUDIO MANAGER	24
4) Bottons	26
4) Spectrum display and sound effect	27
5) Transferring MP3 files	28
6) Transferring DMF files to computer	29
7) Deleting MP3 and DMF files	30
8) Resetting flash memory	31
9) Mail Manager	32

3. Standard Product	36
4. Quality Guaranteed Form	37

Before use (notes for using)

Do not drop or give a hard impact. It could cause malfunction.

Do not use or place it at following places.

- Highly temperate area(above 60)
- Under direct light beam or anywhere close to heater
- Car with closed windows. (Especially summer)
- Where lots of moisture exist ex) bathroom.
- Where lots of electricity occurs

If too much force is pressed on LCD Display window it becomes the reason of malfunction. And it can cause problem due to LCD Display windows' specificity.

If you place any kind of magnetic card; cash card, or commutation ticket close to a speaker, it will affect magnetic part of cash card, and commutation tickets and make the card useless.

Please make sure no dust goes into insertion of this product.

You should not shake or give impact to the product or remove it from USB port when it is reading or writing data. At situation like this, data could be lost or damaged.

Please understand that our company will not be responsible for any harm caused by this product or compensation request made by third party

Please understand that our company will not be responsible for lose of memory other than by damage or repair.

Please do not repair, disassemble, or remodel on users own will.

Please do not operate where use of electric device is prohibited.

Please do not operate while driving.

Please do not overheat the body of the product or the battery, also do not short the battery.

Users using assistant equipment please do not use the main product fasten so closely to assistant equipment's slot.

There is a chance that stored memories might change, or disappear due to situation where the customer or the third party misuses the product or static electricity, and electric shock is given to product or when repairing the damage or replacing the batteries.

Please record important information on a memo or note.

About SSF - 9/SSF - 964 SERIES

SSF-9/SSF-964 series are Multi-Function Next-Generation Portable Digital Audio Player that integrated technology and quality from DATUM NETWORKS CORP. LTD. It's a high performance portable digital audio player which plays digitally compressed audio file MP3 and WMA file in various ways. It can record high-quality voice and also has function to record by connecting it to exterior devices and listening and recording of FM radio broadcast is also possible.

Voice and Exterior Device Record

It enables to record voice and record through exterior device; it has adopted a various voice record function of MP3 player, and it can also be used as portable data storing device which has portable hard disk function.

Listening and Recording of FM Radio

SSF-9/SSF-964 SERIES has function to receive FM Radio frequency, so you can listen to FM broadcast and at same time you can record the broadcast that you are listening and re-listen at anytime.

Graphic LCD Display and Back-Light Function

SSF-9/SSF-964 SERIES uses graphic LCD that supports not just a Korean, but also English, Chinese, and Japanese, so you can easily notify the name of the song and playtime, and the back-light of dark-blue LCD makes it possible for users to configure the menu at night time.

Provide DIGITAL AUDIO MANAGER/ Mail Manager

You can freely transmit the data recorded form PC or receive MP3 files from a PC, and the comfort support of playing and managing stored data and transmitting record data on e-mail is possible.

Function and Feature

Adopted USB interface for convenient computer storage.

Plays MP3 file, voice record, receiving and recording of FM radio broadcast.

Graphic LCD with back-light (indicates file title, play time, battery condition, etc)

Hold function to prevent actions from miss-pressed buttons.

Repeat play function (normal, 1 track, all, random, section repeat, album repeat)

Supports Korean, English, Japanese, Chinese.

Play/ intro play/stop/ power off/record.

Next track/ previous track/ Fast forward/ Rewind.

Volume up/down(digital volume: 30level)

Storing/Managing Folder function.

Various equalizer mode (NORMAL, CLASSIC, LIVE, POP, ROCK.

Adjust back-light time, adjust scroll speed time.

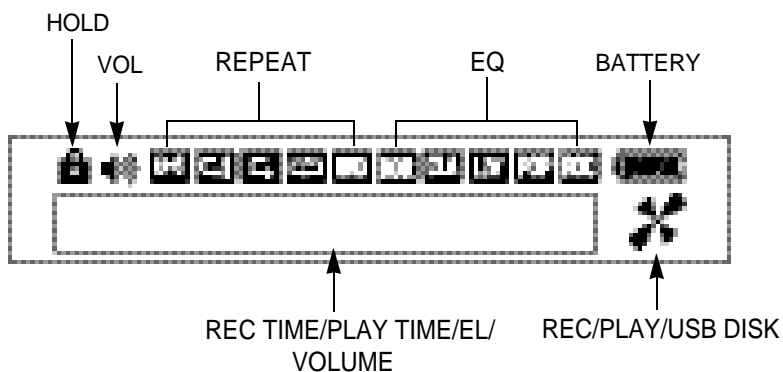
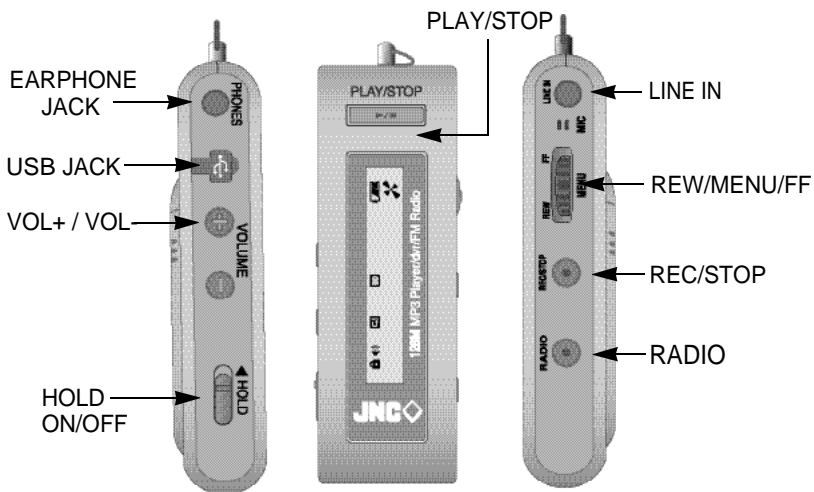
Delete function (ONE, ALL)

Display function to change display while MP3 file is being played (NORMAL, REMAIN, TITLE)


Software : DIGITAL AUDIO MANAGER(File transfer, MP3/WAV/Audio CD Play,MP3 Encoding (Option))

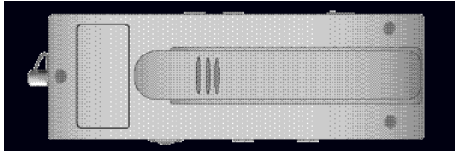
Mail Manager (DMF play, record, voice mail, voice memo)

Name of each part and LCD Display



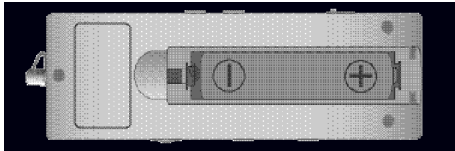
Use of Battery and Component of Package

1. Open the battery cover.  OPEN



2. Insert 1 LR 03 type battery to product matching the (+) (-) polar signs and close the cover.

[Battery : LR 03 or equal product (SIZE"AAA" or UM-4)



3. Press play/stop button to check the battery.



Battery full



Consumed 1/3 of the Battery .



Consumed 2/3 of battery.



Battery needs exchange.

Notice

If LCD doesn't appear after new battery has been inserted, immediately check the polar signs of battery. Even after checking the polar signs of the battery and if LCD still doesn't appear, take the battery out and request for repair.

4. Use time of battery

Battery used	When recording	When played with earphone (volume : medium)
Alkaline battery SIZE"AAA" LR-03	Approx. 7hour	Approx. 7hour

5. Attention when using battery

Do not use with mixing other types of batteries.

Take the battery out if it's not going to be used for long period of time.

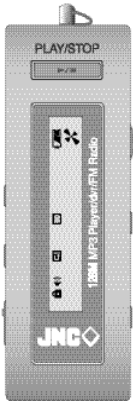
When using rechargeable battery, use it properly after reading the instruction manual.

6. Package Components

STEREO EARPHONE, INSTALL CD, LINE/IN CABLE, USB CABLE, INSTRUCTION MANUAL, BATTERY, NECK STRAP, WIRED CONTROLLER

Basic use

Power ON/OFF



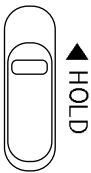
Press play button for over 3seconds to turn the power on and LCD display screen will appear like picture on the side. While power is on, press play button again for over 1second to turn the power off.

If none of the buttons are pressed over 1minute power will turn off automatically.

Using hold switch

If the hold switch is upward switch will not be operated.

Keep the switch upward when it's not being used or if you wish to maintain the recording condition. Before turning the power on, make sure hold switch is disabled.



HOLD disabled



HOLD

Switch will not be enabled.

If power is turned on while the hold switch is at ON it will indicate "HOLD ON", and power will shut off automatically. So, disable hold and turn the power on.

Conversing Mode

SSF-9/SSF-964 SERIES has MP3 mode, voice record mode, and FM radio mode. When the player is at stop, press menu button and menu will appear on LCD screen. Then, use FF or REW button to select between MP3 (audio) and voice record mode (record).

To choose FM radio mode, press radio button when at stop and it will convert to FM radio mode.

PLAY, STOP

Press play button to play music, while music is playing press play button again then it will stop at the current playing position. At this time, press play button one more time then it will start from the position it was playing, press REW button to go back to the beginning of the file.

If REC button is pressed while file was being played, it will stop and go back to the beginning of the file.

Deleting File (ERASE)

To delete current file being displayed on LCD screen press menu button while at stop then from menu use FF button or REW button to choose ERASE ONE then select 'yes' from ERASE menu and current file will be deleted.

To delete all the files in MP3 mode or Record mode choose ERASE ALL then select 'yes' from the ERASE menu using FF button or REW button then press menu button to delete all the files in selected mode.

Selecting and Moving file

From stop position, press FF or REW button to select next or previous track, and hold down on the button for quick search. If FF button is pressed during play, it will play the next track, and hold down on the button to play the track at double speed. When rewind button is pressed, after the current track has been played for over 5seconds it will play the current track back from the beginning, and within 5seconds it will play the previous track. Holding down on REW button will reverse play the current track at double speed.

Adjust Volume

Press VOLUME + and VOLUME - button to adjust volume. Hold on the button for continuous adjustment.

Volume can be adjust from level 0~30

Volume can only be adjusted with plugged in earphone. When earphone is unplugged it will auto-detect "earphone unplugged" and automatically adjust volume to level 20.

Section Repeat

SSF-9/SSF-964 has a 'selected section-repeated function'. Press and Hold on REC button while player is playing and it will set the starting point A of the section to be repeated. Then, repeat section signal (A ↔B) will start flashing on LCD. When the ending part of the repeat section is playing, press REC button to set the finish point B, and section-repeat signal will stop flashing with selected section repeating automatically. Press REC button again to disable section repeat.

INTRO PLAY

Intro play function plays beginning of 10second on all tracks to check the music and voice files that are in the memory. While the music is playing, press and hold PLAY button for over 1second, then "INTRO MODE" will appear on the LCD display. To listen to current track during intro play, just press PLAY button and disable intro mode.

Voice Record

After setting it to Record Mode, press REC button to begin recording. To finish recording press REC button, then it will create DMF file.

When recording at FM Radio Mode, it creates DMF file and saves it on to record mode. To listen to the file, converse the mode to Record Mode.

Connecting it to PC

When connecting SSF-9/SSF-964 SERIES to PC using USB cable to download files, LCD display indicated USB CONNECTION and goes in to PC connection mode. If SSF-9/SSF-964 is connecting to PC it will not play any files. So, disconnect the PC connection cable to play files.

When connecting SSF-9/SSF-964 SERIES without battery to PC using USB cable, SSF-9/SSF-964 SERIES work, When disconnecting, SSF-9/SSF-964 SERIES power off automatically, Please power on SSF-9/SSF-964 SERIES before using.

Use of Buttons

MP3 Mode (SHORT means pressing it for short time and, LONG means more than 1second)

Button	Key Movement	When Stopped	While Playing
PLAY/STOP	SHORT	Plays Current Track	Stops Current Track
	LONG	Power off	Intro scan
FF	SHORT	Switch to Next Track	Play the Next Track
	LONG	Auto Increase of Next Track	Current Track Fast Forward
REW	SHORT	Switch to Previous Track	After 5sec, moves to beginning of the Track Before 5sec. Plays Previous Track
	LONG	Auto decrease of previous Track	Current Track Rewind
MENU		Menu	Menu
VOLUME +		Volume Up	Volume Up
VOLUME -		Volume Down	Volume Down
REC	SHORT		Stops Current Track
	LONG		Configuring and canceling section repeat
RADIO	SHORT	Switch to FM Radio MODE	—

Record Mode

Button	Key Movement	When Stopped	While Playing	When Recording
PLAY/STOP	SHORT	Plays Current Track	Stops Current Track	—
	LONG	Power off	Intro scan	—
FF	SHORT	Switch to Next Track	Play the Next Track	INDEX increase only after 5seconds.
	LONG	Auto Increase of Next Track	Current Track Fast Forward	—
REW	SHORT	Switch to Previous Track	After 5sec, moves to beginning of the Track Before 5sec. Plays Previous Track	—
	LONG	Auto decrease of previous Track	Current Track Rewind	—
MENU		Menu	Menu	Change DISPLAY
VOLUME +		Volume Up	Volume Up	Volume Up
VOLUME -		Volume Down	Volume Down	Volume Down
REC	SHORT	Starts Recording	Stops Current Track	Stops Recording
	LONG	Starts Recording	Setting and Erasing Repeat Section	Stops Recording
RADIO	SHORT	Switch to FM Radio MODE	—	—

FM Radio Mode

Button	Key Movement	FRQUENCY MODE	PRESET MODE	CONFIGURE STATION
PLAY/STOP	SHORT	Configures STATION	-	Configures STATION
	LONG	Power Off	Power Off	Power Off
FF	SHORT	Increase FM frequency minutely	Switch to Next Preset	Switch to Next Preset
	LONG	FM frequency AUTO SEEK+	-	-
REW	SHORT	Decrease FM frequency minutely	Switch to Previous Preset	Switch to Previous Preset
	LONG	FM frequency AUTO SEEK+	-	-
MENU		Enable Preset Mode	Disable Preset Mode	Enable Preset Mode
VOLUME +		Volume Up	Volume Up	Volume Up
VOLUME -		Volume Down	Volume Down	Volume Down
REC	SHORT	Starts or stops recording of Current frequency	Starts or stops recording of Current frequency	Starts or stops recording of Current frequency
	LONG	-	-	-
RADIO	SHORT	Disable FM Radio MODE	Disable FM Radio MODE	Disable FM Radio MODE

When setting Station, if there is no key movement for 3seconds it will automatically be terminated.

Earphone works as antenna for FM Radio. A better reception will be received by lengthening the earphone.

Volume adjustment is available in plugging with earphone.

Menu Table

MP3 Mode

MODE REPEAT EQ SCROLL ERASE DISPLAY BACKLIT

Use Menu button to select and configure each menu, and after moving and selecting upper menu, use FF and REW button to move through lower Menu.

MODE	MODE	AUDIO	RECORD
------	------	-------	--------

AUDIO : Convert to MP3 or WMA FILE playable mode.

RECORD : Convert Line input and voice record mode.

Can't configure Menu when the players being played.

REPEAT	REPEAT	NORMAL	ONE	ALL	RANDOM
--------	--------	--------	-----	-----	--------

NORMAL : Stop after playing all music in order.

ONE : Continually repeats selected music.

ALL : Continually repeats all music in order.

RANDOM : Randomly repeats all music in optionally given order.

EQ	EQ	NORMAL	CLASSIC	LIVE	POP	ROCK
----	----	--------	---------	------	-----	------

Choose the equalizer user wants to use (NORMAL, CLASSIC, LIVE, POP, ROCK)

SCROLL **SCROLL** 0.3SEC 0.5SEC 0.7SEC 0.9SEC 1.0SEC

Control the speed of music information scrolling on display window between 0.3second through 1.0second.

ERASE **ERASE** ONE ALL

ONE : Delete one song displayed on LCD window.

ALL : Delete all songs in MP3 mode.

DISPLAY **DISPLAY** NORMAL REMAIN TITLE

NORMAL : Allow music information to scroll through LCD display once and count elapsed time from beginning.

REMAIN : Allow music information to scroll through LCD display once and count elapsed time backward.

TITLE : Allow music information to continuously scroll on LCD

BACKLIT **BACKLIT** 0SEC 1SEC 2SEC 3SEC 4SEC 5SEC

Turn off or set the time of background light (LCD light) between 0 to 5seconds.

VOICE Mode

MODE REPEAT ERASE DISPLAY BACKLIT

MODE **MODE** AUDIO RECORD

AUDIO : Convert to MP3 or WMA FILE playable mode.

RECORD : Convert Line input and Record mode.

Can't configure Menu when the player is being played.

REPEAT REPEAT NORMAL ONE ALL

NORMAL: Stop all record files after playing it in order.

ONE: Repeat selected record file continuously.

ALL: Continuously repeats all record files in order.

ERASE ERASE ONE ALL

ONE: Delete record file displayed on LCD window before the erase menu.

ALL: Delete all record files in voice mode.

Can't erase when the music is being played.

DISPLAY DISPLAY NORMAL REMAIN

NORMAL: Counts elapsed time of record file displayed on LCD.

REMAIN: Reverse counts the elapsed time of record file displayed on LCD.

BACKLIT BACKLIT 0SEC 1SEC 2SEC 3SEC 4SEC 5SEC

Turn off or set the time of background light (LCD light) between 0 to 5seconds.

When menu button is pressed display screen displays last configured menu. At this moment, use FF or REW button to select the desired menu, then press menu key to configure the details involved in that menu.

Recording from Voice Record Property

Recording

Please select RECORD MODE to record on menu mode and can't record on MP3 mode.

Face the microphone sound source and press REC/STOP button.

It will start recording with, record number, record time, and progress displayed on display screen.

If you wish to stop recording, press the REC/STOP button one more time.

It is impossible to stop recording within 5seconds from start of recording.

Please beware that it won't stop recording even though REC/STOP button is pressed.

Don't need to look for empty space to record like cassette tape because when REC/STOP button is pressed it will start recording from the final number.

When recording for long period of time replace the battery to new one.

Please check the battery capacity before start recording.

Notice

Perform a test before the actual record to prevent failing.

When battery completely runs out during a record it will show low battery (LOW POWER) on display and power will shut off automatically.

Checking leftover record time

You can configure between elapsed time and leftover time from display configuration at menu.

When files are being played, it's marked with elapsed time or leftover time of current message and when recording, it's displayed in elapsed time of current message, or leftover record time of flash memory.

Record monitoring function

Connect earphones while recording to listen to what is being recorded.

Separating files while recording

Separating file is possible through need of user while recording. Use FF KEY to continue recording at next index and it has made it easy to determine the recorded information.

Notice

- Do not take the battery out while recording. Recorded information can be erased or it won't function properly. Always take the battery out from stop position.
- If memory doesn't have enough space it won't start recording. "MEMORY FULL" will be indicated when recording time is at full. Check leftover recording time before recording and erase all needless files.
- Recording at MP3 mode property is impossible so when recording convert to record mode property then start recording.
- Recording up to 64 messages

Deleting

Deleting is possible only from a stop position. (Deleting is same between MP3 and Voice property)

Deleting each message

Use FF or REW button to select message to be deleted.

Press menu and use FF or REW button to select ERASE then choose 'one' After that, select 'yes' then message will be deleted with 'erasing' displayed on the screen.

. LCD message number will be pulled forward when messages get deleted.

Notice: Deleted messages can't be recovered.

Delete all messages

Use the menu button to select property(MP3 or RECORD) to be deleted.

Select the property to delete then press menu and use FF or REW button to choose ERASE and select 'all'.

After that, select 'yes' and all the messages in selected property will be deleted with 'Erasing...' displayed on the screen.

Now, LCD will display 'NO FILES'.

- Deleting H/D is possible through USB
- If all the memories from hard-disk function are used up, storing of recorded or MP3 files are impossible. So, please use it after arranging the files.

Connecting it to Exterior Device

Connecting it to Exterior Device

It's possible to record recorded voices from this product to exterior device, such as cassette or MD using audio cable.

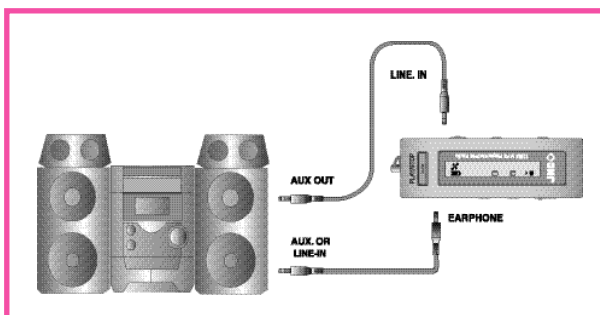
Connect to Audio

When recording exterior device to SSF-9/SSF-964 SERIES.

Connect additional audio cables to exterior microphone terminal and earphone terminal from exterior device or the output terminal of SSF-9/SSF-964 SERIES.

When recording SSF-9/SSF-964 SERIES

Connect additional audio cable to earphone terminal and microphone terminal from exterior device of input of SSF-9/SSF-964 SERIES.



Connecting method with an audio

Notice

When connecting it to exterior device turn the power off.

When connecting it to exterior device please carefully read and understand the manual before the connection.

Record from Exterior Device

When recording from exterior device lower the volume of the exterior device and connect audio cable to the product.

Adjust the volume of the product to mid-position and do not change it during the record procedure.

FM Radio Receiving Function

Reference : Works only on FM radio applied model.

It's convenient to listen to broadcast with auto seek function.

If FF key or REW key is pressed over 0.5sec after setting to radio, it stops at a receiving frequency. Auto seek function will not give you precise broadcast frequency. At this situation, use REW or FF key for precise control.

Configuring radio channel

Select radio mode by pressing radio button.

Frequency will appear on LCD. Select desired frequency using FF/REW KEY.

Storing Channel

Select radio mode by pressing radio button.

Frequency will appear on LCD. Select desired frequency using FF/REW KEY.

When you press PLAY/STOP button 01 will blink where FM is indicated. Now use FF/REW KEY to select channel (01-10) you wish to store and press play button again to store it to selected channel then FM will be indicated again when it get stored. You can store it up to CH10 using same method.

Confirming stored channel

When menu button is pressed 'Preset Mode' will be displayed then it will show stored channel and frequency.

Now use FF/REW KEY to select stored channel. When menu button is pressed from channel confirming mode, it will go back to FM frequency mode with 'Frequency Mode' displayed.

Recording radio broadcast

Select desired recording radio channel through same step from radio channel configuring step1~2.

Press record button to start recording. Now recorded messages will be stored in index of voice next to last stored message. Message can't be increased during recording procedure. So, you have stop and start recording again.

Checking recording data during record is impossible and it can be checked from voice property after it's stopped.

What is DIGITAL AUDIO MANAGER?

DIGITAL AUDIO MANAGER is a program which plays MP3 files from computer to SSF-9/SSF-964 SERIES, it's also a managing program that manages recorded voice or FM radio files (DMF) from SSF-9/SSF-964 SERIES and has following features.

Transferring(upload/download)files to SSF-9/SSF-964 SERIES - MP3, DMF and normal data files

Similar structure to Window Explorer for file managing

Plays MP3, MP2, WAV, Audio CD, playlist

DMF/WAV two way convert

Convenient transfer of files using transfer list

Various spectrum, equalizer, effect support

CDDB function

Convenient instruction manual

Minimum System Requirement for DIGITAL AUDIO MANAGER.

Pentium 200MHz

64MB Memory

20MB Empty Hard Disk Space

256bit Color

Window 98/ME/2000/XP(NT Not Supported)

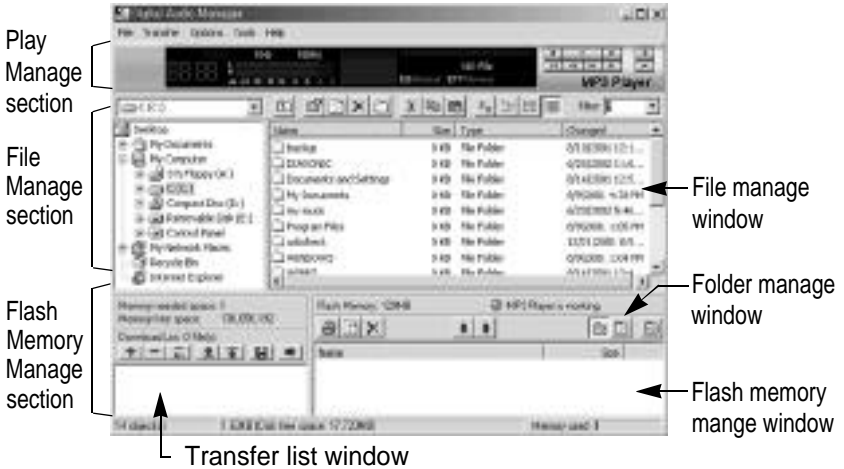
USB Port

CD-ROM Drive

Sound Card, Speaker or Headphone

Composition of DIGITAL AUDIO MANAGER

Appearance of DIGITAL AUDIO MANAGER



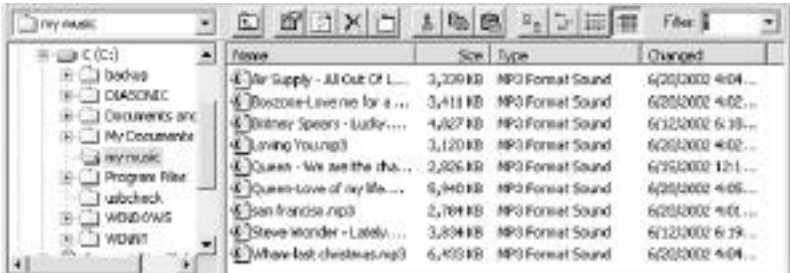
(1) Playing MP3, WAV, CD and DMF



Double click on MP3, WAV, Audio CD Track and DMF file on file manage window or use drag and drop to playlist for instant play. Also, you can select file then press play. Through LCD window progress of music and title will scroll from right to left, and you can see two kind of magnificence spectrum window.

Play and stop files through control panel on the right side of the screen. Adjust volume by using +,- button. Click on red position bar to move the position of current playing music.

(2) Managing DMF file and MP3 file

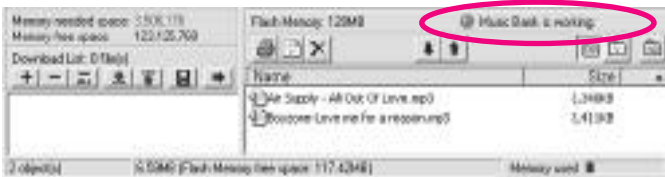


File managing part of DIGITAL AUDIO MANAGER is very similar to Window Explorer. Left part of the window shows the hard disk and CD-ROM drive installed in system with its inside folders. Right part of the window shows various files inside folders.

Basic setting is to show all the files on the screen, but you can select MP3 files or other various files by using filter function on the upper right corner. Also, transferring and copying of the files can be used in the same way as explorer.






Using this file managing function, separation and keeping of MP3 files in other folders are possible.

(3) Flash Memory Managing of SSF-9/SSF-964 SERIES



Very low section of DIGITAL AUDIO MANAGER is a part that manages flash memory installed in SSF-9/SSF-964 SERIES and transferring list. If SSF-9/SSF-964 SERIES is properly connected it will show red light lamp with a phrase saying 'DIGITAL AUDIO MANAGER is Working' just like picture at the top. The MP3 files which user sends to flash memory of SSF-9/SSF-964 SERIES will appear on low right window and file size and left over space of memory will be marked with graphic screen.




Buttons

Button	Function	Particular Information
	Print	Prints file list in flash memory.
	Reload	Re-reads the information on flash screen.
	Delete	Choose the file stored in flash memory, then press this button to delete the file.
	Transfer to flash memory	Choose the files to be move to flash memory for file manage window, then click this button to transfer(download) selected file to flash memory.
	Transfer to computer	It is used to move file to computer from flash memory.

Uploading of MP3 file is disabled.

Just like managing folder in computer, DIGITAL AUDIO MANAGER is divided into 3 folders and can be played by each folder.

Album select buttons

Button	Function	Particular Information
	Select MP3 Folder	Used in MP3 Mode
	Select VOICE Folder	Used in Voice Record Mode Only Save/create DMF files
	Select HD folder	Used in HD folder

Spectrum Screen and Sound Effect

DIGITAL AUDIO MANAGER shows fascinating spectrum screen. Basic setting is same as picture at bottom but, screen changes in various ways by clicking left button of mouse.



Spectrum screen of DIGITAL AUDIO MANAGER 1

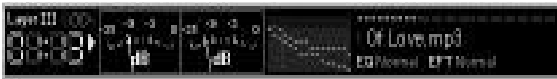
This changing spectrum screen can be used by users taste. Following pictures are example of some features.



Spectrum screen of DIGITAL AUDIO MANAGER 2



Spectrum screen of DIGITAL AUDIO MANAGER 3



Spectrum screen of DIGITAL AUDIO MANAGER 4





Spectrum screen of DIGITAL AUDIO MANAGER 5

Other than this spectrum screen, various equalizer and sound effect can be use to listen to music more wealthy and powerfully.



The equalizer freesets supported by DIGITAL AUDIO MANAGER are normal, rock, pop, jazz, classic, and vocal, by clicking left button of mouse on red light freeset configuration change them in order. Also, Voice Bank has many kind of effect. Supported effects are normal, room reverb, big room, hall reverb, stage reverb, stadium reverb, cathedral1, cathedral2, air duct reverb, metallic reverb, simple reverb, alien 1, alien 2, bass boost, mega bass boost, simple echo, distance echo, long echo, alpia echo, double echo, strange FB1, and strange FB2. By using this effect can experience various sounds.


Transferring MP3 File

It's very simple to transfer MP3 file to SSF-9/SSF-964 SERIES. First select MP3 file from file manage window then choose Folder manage window . And, use drag and drop to flash memory window, or press 'Download to flash memory'  icon or same operation.

Transfer MP3 files by following method.

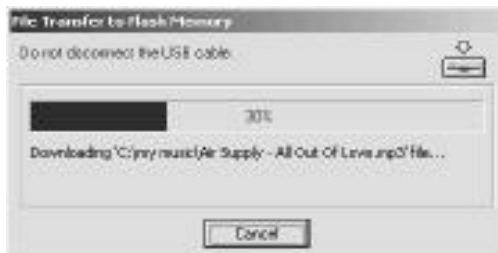
Select MP3 files from file manage window.



Select  from folder manage window, then click 'Download to flash memory'.



Selected MP3files are being transfer to flash memory of SSF-9/SSF-964 SERIES.



Transferring DMF Files to Computer

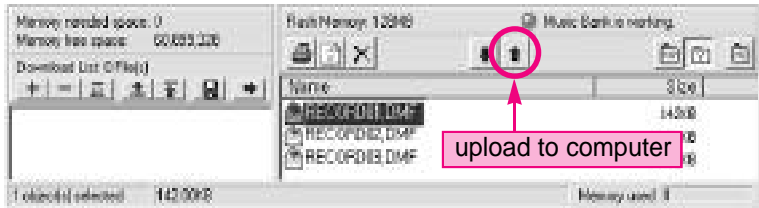
It's very simple to send DMF files from SSF-9/SSF-964 SERIES to computer. Select [v] from previously mentioned folder manage window and choose DMF file from flash memory manage window, then click 'upload to computer' icon from flash memory manage window.

Transfer DMF files to computer by following method.

Choose [v] from folder manage window and select DMF files to transfer from flash memory manage window to computer.



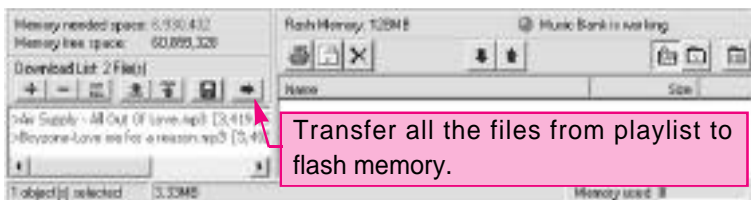
Click [computer icon] "upload to computer".



Selected DMF files are being transfer to computer.

+To transfer file at once use button or drag and drop to keep files in transfer list. It's convenient to send files from lot a different folders and manage files by making play list.


Transferring files from transfer list is shown below.



Deleting Mp3 File and DMF File

Deleting MP3 or DMF files stored in flash memory of SSF-9/SSF-964 SERIES is same as deleting files in explorer. Select one of the stored file from flash memory by clicking left mouse button, then press 'delete' button from tools at flash memory manage section.

Through following steps, you can delete MP3 and DMF files from flash memory.

Select file to be deleted, then from click on ' delete '  button from tools.

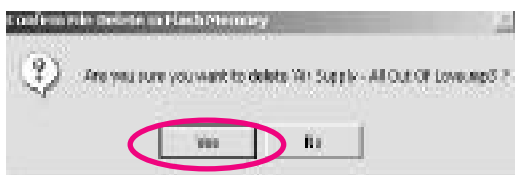


DMF File



MP3 File

Ask to confirm 'delete'. Select 'Yes'.



After few seconds file will be deleted from flash memory of SSF-9/SSF-964 SERIES.

Select file from flash memory manage window then click right mouse button for pop-up menu. Deleting and transferring are possible from this menu.

Resetting Flash Memory

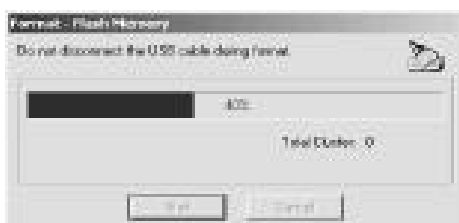
Just like formatting hard disk on computer flash memory used in SSF-9/SSF-964 SERIES can be reset (format). All the data from flash memory will be lost when formatted.

Select 'file-format flash memory' from menu DIGITAL AUDIO MANAGER.



Click right mouse button from empty spot at flash memory for pop-up menu. Formatting flash from this menu is possible.

When format window appears press 'start' to start formatting



Mail Manager

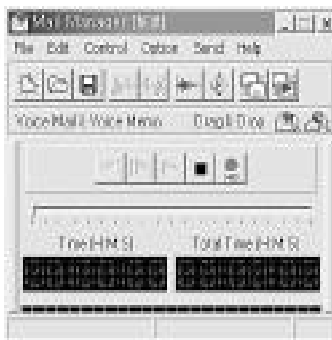
Play/Record DMF file

Voice mail function : auto appending at mail program

Creates self play function : voice file+player

Edit DMF file : delete front and rear, middle insert record function

16various voice effect



Mail Manager is a program that plays self created voice file DMF from SSF-9/SSF-964 SERIES. It can send voice mail or record and keep conference meeting and lectures.

Mail Manager send and receive voice mail through e-mail or network without typing or writing letters. To send voice mail by mail manager use DMF file recorded from SSF-9/SSF-964 SERIES, or simply press record and send recorded voice without any difficulties, and If recorded DMF file from mail manager is sent to SSF-9/SSF-964 SERIES, it can be played through SSF-9/SSF-964 SERIES.

Mail Manager supports mail program like exchange, internet mail, outlook, outlook express, and Netscape, with use of drag and drop sending voice mail through other mail program and network program is possible. One of the special function about mail manager is that it creates tiny size combined voice data and player in executable file (.exe), voice mail can be sent even receiver don't have mail manager. Also, changing original voice through use of various voice effects like reverb, echo, robot voice, helium voice makes interesting voice mail.

(1) Voice Recorder

Has Voice mail, Voice memo function, and uses high-quality sound compressed function to make or play recorded DMF files.

Play

Pause/Stop

Record (Half way insertion record possible)

Move forward

Move Backward

(2) Convenient use method

Auto-append of voice mail to mail program.

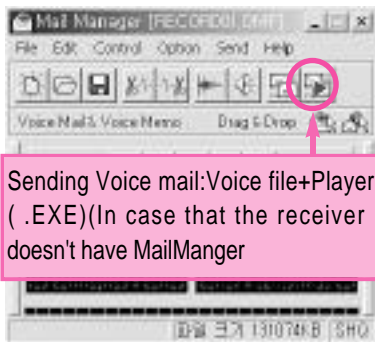
Press ' record 'button

Say the message

Press ' Stop 'button

Finally press ' send ' button and

mail window with voice mail
attached will appear.



To do a proper recording or playing volume must be adjusted at appropriate level. Adjust [volume control]from window to control wave volume, and select [recording] at [property] from [option] the select [microphone] from volume control window to adjust volume at right level.

(3) Production of self play function

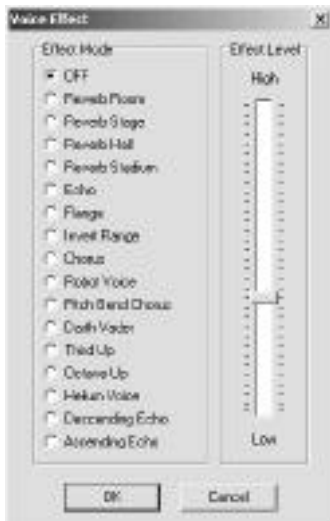
Creates little size of executable file
combined with voice file and player.

If self player formed mail is sent
receiver can listen to it even without
mail manager.

From 'save as' save in 'voice
mail+player' from and it will create self
player with executable file(.exe)

(4) 16Digital voice effect

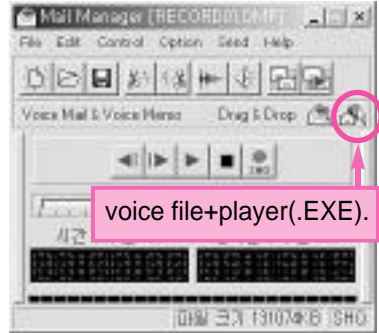
Change recorded voice to various
voices.



16Digital voice effect

(5) Drag and Drop

If use drag and drop function of mail manager attaching voice mail to other mail program or network emulator not supported by mail manager will be possible. Press left button of mouse on drag and drop to add voice mail to other program. Now, Use two drags and drop icon, choose between voice file+player.

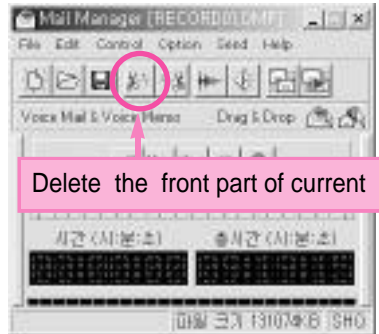


(6) Simple edit function

By simple edit function deleting of front and rear part of recorded messages are possible, and after recording if mis-record is found, delete the mis-part and just record that part again.

delete front part of current position

delete rear part of current position



(7) Supported mail program

Exchange

Internet mail

Outlook

Outlook express

Netscape(manual attach of voice mail)



(8) Shorten Keys

Support of shorten keys, control of mail manager is possible while using other program.

F2 : Play

F3 : Rewind

F4 : Fast Forward

F5 : Stop

GENERAL SPECIFICATIONS(SSF - 9/SSF - 964)

Model	SSF-9/SSF-964	
File type	MPEG 1/2 LAYER 3, WMA(Over 64kbit)	
Bitrate	32Kbps~320Kbps(MPEG 1/2 LAYER 3)	
Signal vs noise rate	85db (1KHz input 0db at USE LPF 30KHz)	
Distortion	0.3% ± 0.05 (1KHz input 0db)	
Frequency respond	20Hz~20KHz	
earphone	Max. 5mW(16ohm)	
Play mode	EQ : NORMAL, ROCK, POP, CLASSIC, LIVE	
Search play	Play each track 10 seconds	
Search	Easy track search	
Repeat	One song , all song ,section random	
Download speed	Max. 4Mbps(500Kbyte)	
EL/ BACK LIGHT	Blue	
Memory	Nand flash memory(64M/128M)	
AUDIO IN JACK	MONO DIRECT RECORD	
Key control	REC/FF/PLAY/REW/MENU/VOL+, VOL-/HOLD/RADIO	
Remote control	FUNCTION/PLAY/FF/REW/REC	
PC interface	Network	USB 1.1
	System requirement	Pentium 200Mhz, 64mb memory, 20mb hard disk space
	OS	windows98, windows2000, windows ME, windows XP
	Sound card	Sound blaster compatible 16
	Display	Screen display above 640X480
	Earphone	3.5 earphone(mini plug/stereo) IMP less than 16
	USB	Mini jack (PC : A TYPE)
LCD 128x16DOT	Track	01~64(TRACK)
	Equalizer	NOR, ROC, POP, CLA, LIV
	Count	0h00m00s
	Repeat	A-B REPEAT / ONE REPEAT / NORMAL REPEAT / ALL REPEAT / RANDOM REPEAT
Power		1.5V, LR03, alkaline batteryx1EA("AAA"size or UM-4)
Battery period	Play MP3	Approx. 7hours of play time from mid-sound output
Accessories		Cable to connect to Exterior device (1) / Install CD(1) / neck strap(1) / Stereo earphone(1) /battery(1) / USB cable(1) / manual(1)
Size		86 x 28 x 16

WARRANTY CARD

Product : MP3
MODEL : SSF-9/SSF-964
Warranty period : 1 year
Purchased date : / /

Purchaser	Name	
	Address	
	Phone	
Seller	Name	
	Address	
	Phone	

Please refer to sales market of DATUM NETWORKS CORP. LTD. for any information or breakdown on the product.

Exchange, repair(charge. free), refund and parts keeping period is depended on regulation of customer protection

Any questions or if you want to know more information about the product please contact DATUM NETWORKS CORP. LTD.

DATUM NETWORKS CORP. LTD.

RM 2104-05, MEGA TRADE CENTRE, 1 MEI WAN ST., TSUEN WAN, H.K.

Telephone No.

- TEL : +852-2416-3632

- FAX : +852-2416-8792

Homepage : <http://www.vintion.com>

This warranty card is only affected in Korea, and kept safely because it's needed for fare free repair service.