

***Digital
Video Camera Manager***

E-manual

Chapter 1: Installation

Software Installation

1 Digital Video Camera Manager Installation

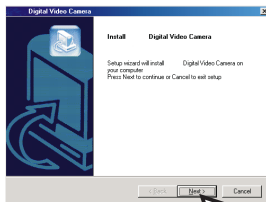
Place the CD into your CD-ROM and click on the Digital Video Camera Manager Icon to begin the installation. If the CD does not automatically launch, locate the CD-ROM Drive in Windows Explorer, and double-click on "Setup.exe".

Digital Video Camera Manager



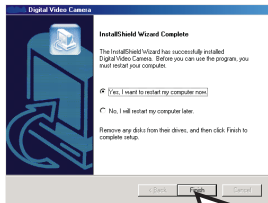
2

After the welcome screen appears, click "Next".

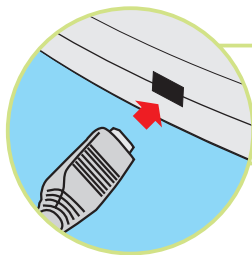


3

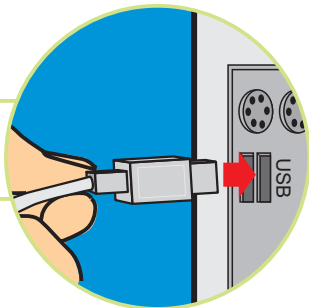
The dialog box that appears asks if you would like to restart your computer now or later. Press "Finish" to complete installation.



Hardware Installation



Connect the smaller end of the USB cable to the USB port of your camera.



Plug the larger end of the USB cable to the USB port of your PC.

Chapter2: How to Use Your Digital Video Camera

Introduction

The Pocket DV is equipped with 16 MB (128Mbits). It offers digital cam-corder, digital still camera, voice annotation , and Video Conferencing functions. It is able to take up to 450 VGA pictures and up to 2000 QVGA pictures. In addition, your camera supports AVI Movie (QVGA) and provides audio & video synchronized function. It allows up to 200 seconds audio & video recording and is able to achieve around 30 minutes voice annotation.

Installing batteries

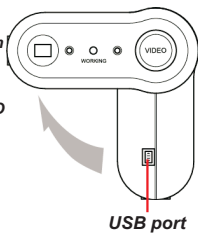
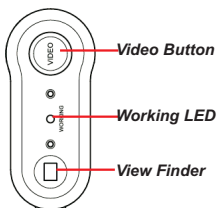
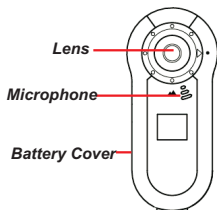
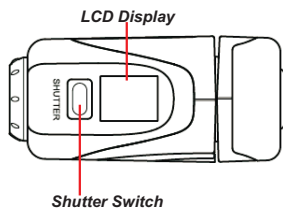
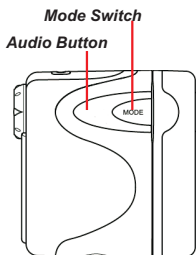
Your camera is powered by 2 AA batteries or by a PC via a USB cable.



Please be aware that when batteries are out of power or are removed, all stored pictures will be erased. Therefore, please upload images, audio or video files to PC as soon as possible.

(Battery Capacity: continuous AV recording for 2 hours, standby for 7 days.)

Your camera



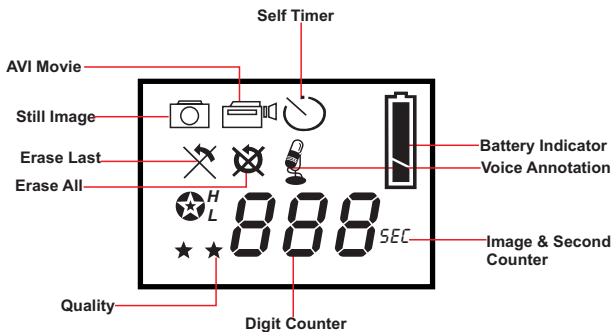
Turning on / off your camera

- 1 Hold the mode button for 5 seconds to activate the camera.
- 2 Then press the shutter button in 5 seconds to select the operation mode.
- 3 If the shutter button is not pressed in 5 seconds after activating the camera, the camera will be turned off automatically.







 In operation mode, the camera will be turned off when idle for more than 30 seconds.

LCD Display



Quality

Still Image

Size	★★ VGA (640x480)	★★ VGA (640x480)	★ QVGA (320x240)	★ QVGA (320x240)
Quality	 H	 L	 H	 L
Maximum Photos	Up to 250 pic.	Up to 450 pic.	Up to 1000 pic.	Up to 2000 pic.

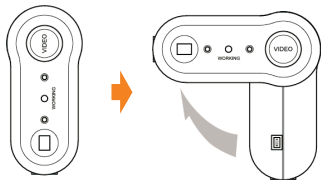
Choosing the Quality

- 1 Press the mode button until star icons with H or L are shown.
- 2 To change "H" or "L" quality, press the shutter.
- 3 Select a function icon to take a picture, such as Still Image mode.
- 4 Press the shutter and a picture is taken.

AVI Movie

The AV recording video size is QVGA (320x240). As you click the Video button, your camera will automatically select QVGA format.

Chapter 3: Taking Pictures

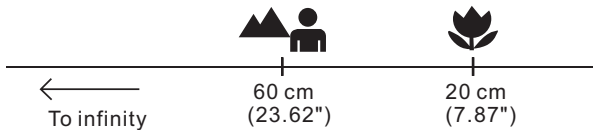


Adjusting Viewfinder Axis

After choosing the LCD functions, left turn the viewfinder axis to locate the viewfinder. Then aim at your objects by positioning the viewfinder vertically or horizontally.

How to Adjust the Focal Length

- We suggest adjusting the focal length to the following positions as taking distinct shots.



**Landscape & People
(whole-length)**



**People
(half-length)**



Extreme close-up

Taking Pictures



Still Image Mode

- 1 Press the mode button.
- 2 The LCD shows the Still Image Mode icon.
- 3 Press the shutter button to take a single picture.



AVI Movie Mode

Press the Video button to begin to take AVI Movie with audio. Your camera allows up to 200 seconds video recording. To stop video recording, press the Video button again.



If you record for 3 minutes and 20 seconds or for minutes, uploading AVI files to your PC may take several minutes .

Video button



Self Timer

- 1 Press the mode button.
- 2 The LCD shows the Self Timer icon.
- 3 Press the shutter button.
- 4 Your camera starts a 10-second countdown and takes a picture.



Erase Last

- 1 Press the mode button.
- 2 The LCD shows the Erase Last icon.
- 3 Press the shutter button.
- 4 The Erase Last icon starts to blink.
- 5 Press the shutter button again and the last stored picture or AVI Movie is cleared.



Erase All

- 1 Press the mode button.
- 2 The LCD shows the Erase All icon.
- 3 Press the shutter button.
- 4 The Erase All icon starts to blink.
- 5 Press the shutter button again and all the stored picture and AVI Movie are cleared.



Digit Counter

- 1 It shows the total taken images and AVI Movies.
- 2 Your camera beeps with blinking LCD to remind you the memory is full.

➔ Due to the limitation of digit counter, when the number of pictures is over 999, the LCD will show a "sec" icon together with a "000" icon. This indicates you have taken 1000 pictures. Meanwhile, when taking the next picture, the digit counter will start from "1" with a "sec" icon. If the LCD shows a "sec" icon with "999", that means you have taken 1999 pictures.



Battery Indicators

When your camera enters low battery status, your camera will beep for six times and the LCD will be locked. The standby time is 7 days. Please upload files to PC before the batteries are out of power or before removing the batteries.



Voice Annotation

- 1 Press the Audio button to start voice annotation.
- 2 To stop voice annotation, press the Audio button again.

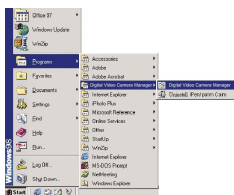


Chapter 4: How to Transfer Pictures and AVI files to PC

Start Digital Video Camera Manager

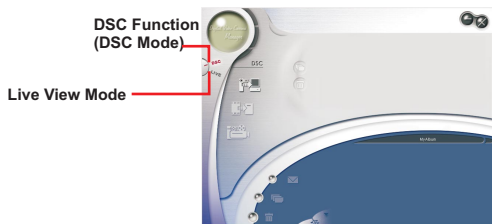
Pictures can be transferred to your PC at all times. To connect your camera with your PC, you need a USB cable and USB port. Your camera double beeps when successfully connected with your PC. Your PC offers power for your camera. When disconnecting the USB cable, your camera turns off automatically.

To start using the Digital Video Camera Manager, click on the "Start" menu and go up to "Programs" Then go to the folder named "Digital Video Camera Manager" and select it. Click on the Digital Video Camera Manager "This program is the interface for your camera."

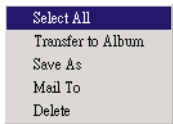
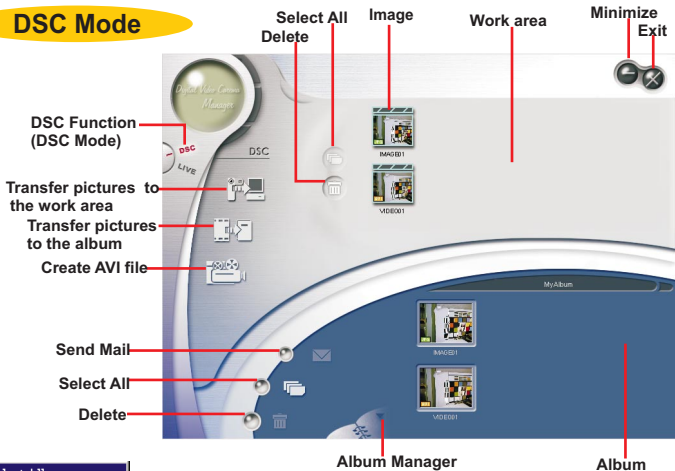


Mode Selecting

- Press the "Live View" button to change the camera to Live View mode.
- Press the "DSC Function" button to change the camera to DSC mode.



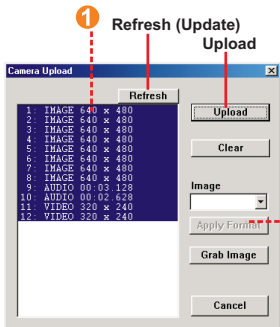
DSC Mode



Shortcut Menu

Right-click the work area, a shortcut menu will pop up. You can use the shortcut menu to select the select all, transfer to album, save as, mail to or delete options.

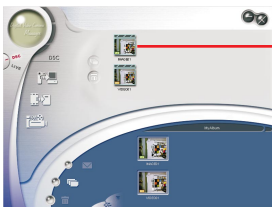
Transferring pictures to the work area



- 1 First, the total taken pictures in the camera are displayed. Click "Upload" to transfer pictures to the work area.
- 2 To take pictures through the PC, click "Apply format" to choose "VGA" or "QVGA" format.
- 3 Click "Grab Image" or the shutter button to take a picture. Then click "Update" to display the next picture.

Preview & Slide Show

You can preview any picture file you want by double clicking the picture icon to display the Slide window. To display the next image, click " Go to the next picture" or " Go to the previous picture". Then adjust Slide Show Timer and click "OK". Pictures in the work area are displayed in order. To stop Slide show, simply click " Stop".



Picture icon



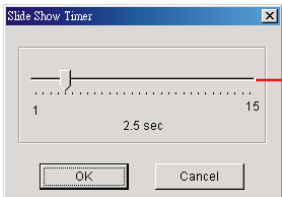
Go to the next picture

Go to the previous picture

Slide Show

Stop

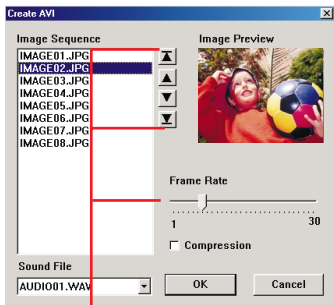
Exit



Slide Show Timer

Making AVI file

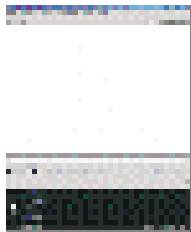
To create an AVI file from separate images, select JPG or BMP pictures and click on the " Create AVI" icon to create an AVI file.



Picture sequence and frame rate are adjustable

Playing Video

Double click the "AVI" icon on the work area to launch your default media player and play the file.



Playing Audio

Double click the " WAV " icon on the work area to launch your default media player and play the file.



Deleting files

To delete JPG(BMP), AVI or audio files, select the file and click the " Delete " button on your keyboard, thereby deleting the files you are not satisfied with.

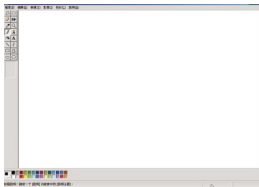
Transferring pictures to the Album

Click a JPG(BMP) picture or an AVI picture . Then click " Transfer pictures to the album" button. Pictures are transferred from the work area to the album. To delete a picture, select it and click "Delete".



Editing Photos

Pictures can be edited in image editing software, such as PhotoExpress, CorelDraw, etc.



Album

Delete

Click the button. All the files you select in the album window are cleared forever.



Please be very careful when deleting images!



Select All

This button will allow you to select all of the images, audio, and video files in the Album.



Making Your Album Folders

Click the button and key in your file name. Then you'll have a new album folder, which can store lots of pictures or AVI files. If you want to cancel any of the album folders, just select the album and click the delete button below.



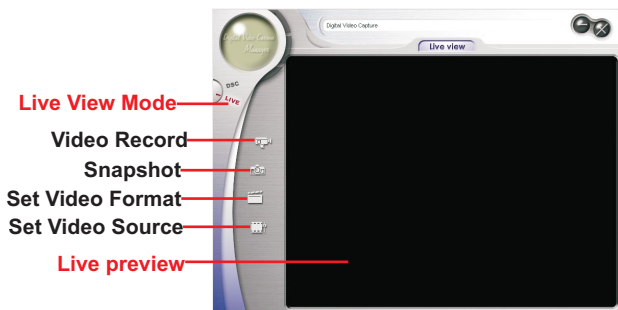
Mail Function

Use this button to send the selected image to an email recipient. It will launch your default email application.



Live View Mode

The current view is displayed in the "preview" window.



Press "Video Record button" to record a video clip to the work area.

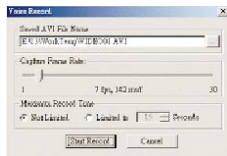


Press " Stop" button to stop video recording.

Video Recording

If you wish to change the recording speed, adjust the Frame rate from 1 to 30. The recording time is also adjustable. Press " Start to record" to record .

Note: To record Video and Audio simultaneously, please use one of the bundled applications.





Press "Snapshot" button to capture a picture to the work area.



Press "Video Format" button to set picture size.

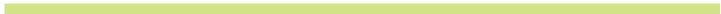
- Go to " Output size" to change resolution and video quality.
QVGA is the standard setting of video recording.



Press "Video Source" button to adjust advanced settings.



While the Manager is in Live View mode, the camera will automatically lock the functions of the icons on the LCD. The LCD is unlocked if you switch to DSC mode.



TWAIN Manager

To start using the TWAIN Manager, simply click on the "Start" menu and go up to "Programs" Then go to the folder named "Imaging" and select it.

How to enter TWAIN Manager

- 1 Go to "File" and choose "Select scanners"
- 2 Choose " TWAIN scanners " and click "OK"
- 3 Go to "File" again and select " Scan New "



After connecting USB cable with your PC, pictures are transferred to the preview window automatically.



Transfer

Transfer All

Save AVI

Snapshot



Select a single picture and transfer it to the work area



Select all pictures and transfer them to the work area



Select an AVI or a WAV file and click "Save AVI or WAV"



Press "SNAPSHOT" button to capture a picture