

# SanDisk®

## Sansa® Clip



### User's Manual

Technical Support  
U.S.: 1-866-SANDISK (726-3475)  
Worldwide: [www.sandisk.com/techsupport](http://www.sandisk.com/techsupport)

For more information on this product, please visit [www.sandisk.com/sansa](http://www.sandisk.com/sansa).

Part Number: Clip-8UM-ENG2

# ▶▶ Table of Contents

Safety Tips & Cleaning Instructions 2

Sansa® Clip Overview 3

Features 3

Minimum System Requirements 3

Package Contents 4

Sansa® Clip at a Glance 4

Hold Switch 5

Main Menu Options 5

Playback Screen 5

Battery 6

Basic Usage 7

Power Button 7

Power On 7

Power Off 7

Reset 7

Connecting to your Computer 8

Loading Contents 9

Loading Music 9

Drag and Drop 9

Windows Media Player 9

Playing Contents 13

Playing Music 13

FM Radio (if applicable) 15

Listening to FM Radio 15

Programming FM Presets 15

Recording 16

Voice Recording 16

Deleting Music Files 17

Settings 18

Equalizer 18

Power 18

Display - Backlight 18

Display - Brightness 18

Language 19

FM Settings (if applicable) 19

Volume 19

# ▶▶ Table of Contents

Reset All 19

System Info 19

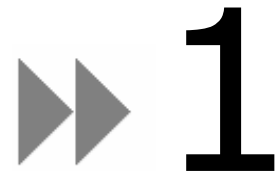
Tips & Troubleshooting 20

Learn More, Service, and Warranty Information 21

Getting Technical Support 21

SanDisk Limited Warranty 21

End User License Agreement 22



*This chapter provides you the safety tips and cleaning instructions for your SanDisk Sansa® Clip player.*

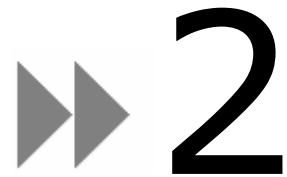
# Safety Tips & Cleaning Instructions

Read the safety instructions carefully before using your Sansa® player.

1. Read this entire manual to ensure proper usage.
2. Keep this User's Manual for future reference.
3. Do not use Headphones/Earphones while driving, cycling, or operating any motorized vehicle. This may create a traffic hazard and may be illegal in some areas. It can also be dangerous to play your music with Headphones/Earphones at high volume while walking, or engaged in other activities. You should exercise extreme caution and discontinue use in potentially hazardous situations.
4. Avoid using Headphones/Earphones at high volume. Hearing expert's advise against continuous loud and extended music play. Keep the volume at a moderate level, so that you are better able to hear outside sound, and to be considerate of the people around you.
5. Keep your player away from sinks, drinks, bathtubs, showers, rain, and other sources of moisture. Moisture can cause electric shocks with any electronic device.
6. Follow these tips to keep your player working well for a long time:
  - Clean your player with a soft lint-free cloth used on glass lenses.
  - Do not allow young children to use your player unsupervised.
  - Never force any connector into the ports of your player or your computer. Make sure your connectors are the identical shape and size before you connect.
  - Do not disassemble, crush, short-circuit or incinerate battery as it may cause fire, injury, burns or other hazards.

## Disposal Instructions

Do not dispose of this device with unsorted waste. Improper disposal may be harmful to the environment and human health. Please refer to your local waste authority for information on return and collection systems in your area.



*This chapter helps you familiarize yourself with the features and functionality of your Sansa® Clip player.*

# Sansa® Clip Overview

Congratulations on your purchase of a SanDisk Sansa® Clip MP3 player!

Sansa® Clip is a sleek and wearable MP3 player with a removable clip. It also has a built-in microphone, a FM radio and a 1.0" display screen. You can listen to FM radio broadcast (if applicable). Additionally, you can enjoy a built-in microphone for recording voice. The Sansa® Clip comes with a built-in rechargeable battery will last up to 15 hours.

## Features

- **Digital Audio Player** – supports MP3, WAV, WMA, secure WMA, and Audiobook files.
- **FM Radio** (if applicable) – includes an integrated FM radio for listening to live-broadcast FM radio programs.
- **Voice Recorder** – supports voice recording function with built-in microphone.
- **EQ effect** – you are able to select an EQ mode to personalize your music experience.
- **Internal Memory** – allows users to store data on the internal memory.
- Works with most subscription services using WMDRM10.

## Minimum System Requirements

- Windows XP SP2
- Windows Media Player v10
- Intel Pentium class PC or higher
- CD-ROM drive
- USB 2.0 port for hi-speed transfers and charging

# Package Contents

Please unpack your **Sansa<sup>®</sup> Clip** and check that the following were included:

- Sansa<sup>®</sup> Clip player
- Earphones
- USB 2.0 Cable
- Quick Start Guide

## Sansa<sup>®</sup> Clip at a Glance



1	Display window	Display the information and status here
2	Left/Previous/Rewind	Press for previous track, rewind, or move left
3	Select Button	Press to select the item
4	Down/Submenu	Press to move down or to options menu
5	Right/Forward	Press for next track, fast forward, or move right
6	Up/Pause/Resume	Press to move up one item, pause, or resume
7	Menu	Return to the Main Menu
8	MIC	Built-in microphone
9	Earphone Port	Connect earphones here to listen
10	Volume Up	Turns up the volume
11	Volume Down	Turns down the volume
12	Hold/Lock	Factory sets to locked position (shows orange color). Slide to center position for controls. When locked, all controls are disabled to prevent accidental activation of controls.
13	Power/ <b>Reset</b>	<ul style="list-style-type: none"> <li>• Slide up to turn on the player</li> </ul>

- Slide up and hold for 2 seconds to turn off the player
- Slide up and hold for 15 seconds to reset your player

14 USB Port

Plug USB cable here to connect to the computer

15 Clip

The removable clip accessory

## Hold Switch

The **Hold** Switch is located on the left side of the player, and is used to prevent any accidental operation. All function keys will be disabled once the **Hold** Switch is moved to the lock position (Orange Color visible). All the buttons on the Sansa® Clip will not operate when the **Hold** Switch is active (Orange Color visible).

The following message will appear on the display screen if any buttons is pressed while the device is in the Locked position. The music should continue to play even if the device is locked.



## Main Menu Options



**Music** – browse and listen to music, audio books, or recordings



**Radio** (if applicable) – listen to FM broadcast radio and save presets



**Voice** – record voice using built-in microphone



**Settings** – view or customize the Sansa player features

## Playback Screen



1	Shuffle	Indicate that the Shuffle function is enabled
2	Repeat	Indicate that the Repeat function is enabled
3	Current/Total Tracks	Display the current track number and the total number of tracks
4	Battery Indicator	Display the battery status
5	Artist Name	Display the artist name
6	Title/Album	Display the song title and album name
7	Play Time	Display the elapsed time
8	Progress Bar	Display the progress of the current track
9	Play/Pause	Display the music or recording files playback status

## Battery

The Sansa<sup>®</sup> Clip player comes with an internal rechargeable battery. To use the player for the very first time, remember to fully charge the battery. You can charge your Sansa<sup>®</sup> player through the USB port of your computer, a car adapter (not included) USB port, or AC adapter (not included) USB port.

### Charging

To charge the battery, please follow these steps:

1. Connect the larger end of the USB cable into an available USB port on the computer.
2. Connect the smaller end of the USB cable into the Sansa<sup>®</sup> Clip player.
3. The computer must be on for most USB ports to charge your battery. Your Sansa<sup>®</sup> will show connected and the yellow charging indicator will appear. The battery level indicator will blink while charging. You will not be able to play while connected to the computer USB.
4. To stop recharging, simply disconnect the cable.

The battery can also be charged using an AC adapter (not included) or a car adapter (not included) and you will be able to play your device while charging with one of the adapters.

NOTE: Some low-power USB ports may not be able to provide enough charge power. Also note that the rechargeable batteries are not replaceable.





*This chapter provides you the basic usage instructions for your Sansa<sup>®</sup> Clip player.*

# Basic Usage

## Power Button

The power button is used to turn on or off the player, as well as resetting it.

### Power On

Slide the **Power Switch** up to turn on the player. The Blue Ring will light up and the Main Menu will appear after it has been booted up.

### Power Off

Slide the **Power Switch** up and hold it for about 2 seconds to turn off the player.

NOTE: To prevent accidental power on, move the **HOLD** switch to the locked position.

### Reset

If the Sansa<sup>®</sup> Clip player freezes up, slide the **Power Button** up and hold it for approximately 15 seconds. This is like a power down of the device. Once you perform the reset, the adjustments you made during the last operation will be gone.

## Connecting to your Computer

To connect the Sansa<sup>®</sup> player to your computer, follow these instructions:

1. Connect the smaller end of the USB cable into an available USB port on the computer.
2. Connect the larger end of the USB cable into the dock connector of the player.
3. The Sansa<sup>®</sup> player will show connected on its display screen.
4. The Sansa<sup>®</sup> player will appear in **My Computer** as Portable Media Player.



To remove the Sansa<sup>®</sup> player from your computer, simply disconnect the USB cable from the player after you have finished charging, transferring, firmware upgrading, or synchronizing files.

**WARNING:** Do not disconnect the player while it's transferring data. Disconnecting the player from the computer while the data is being transferred can damage the device.

# ▶▶ 4

*This chapter shows you how to transfer music files from your computer to your Sansa<sup>®</sup> Clip player.*

## Loading Contents

### Loading Music

You can transfer music from your computer to the Sansa<sup>®</sup> player using the drag-and-drop method or using music management software like Windows Media Player.

#### Drag and Drop

Follow these steps to drag-and-drop music to your Sansa<sup>®</sup> Clip player:

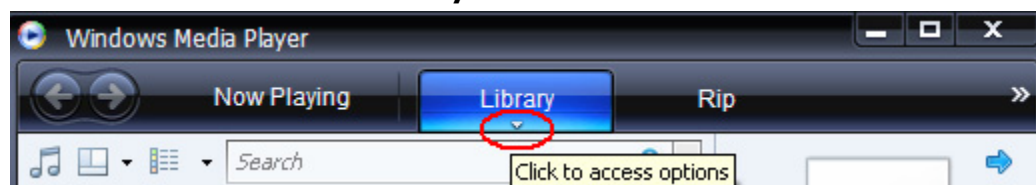
1. Connect your Sansa<sup>®</sup> Clip player to your computer.
2. Select **Open device to view files using Windows Explorer** on initial connection.
3. Double-click on the **Sansa<sup>®</sup>** player.
4. Double-click **MUSIC** folder.
5. Drag and drop music files from your computer to the Sansa<sup>®</sup> player's **MUSIC** folder.

#### Windows Media Player

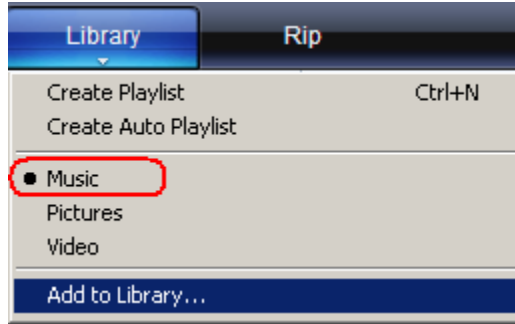
Before you can create playlist and transfer (or synchronize) them to your Sansa<sup>®</sup> player, you need to show Windows Media Player where your songs are located.

#### Adding Music Files to Library...

1. To add music files to WMP 11's library, follow these steps:
2. Click the arrow below the **Library** tab



3. Make sure **Music** is selected then click **Add to Library...**



4. In the **Add to Library** dialog box, click one of the following options then click **OK**.

- **My personal folders:**

Use this option to monitor the digital media files stored in your personal Music folder as well as any files stored in the public Music folders that everyone who uses your computer has access to.

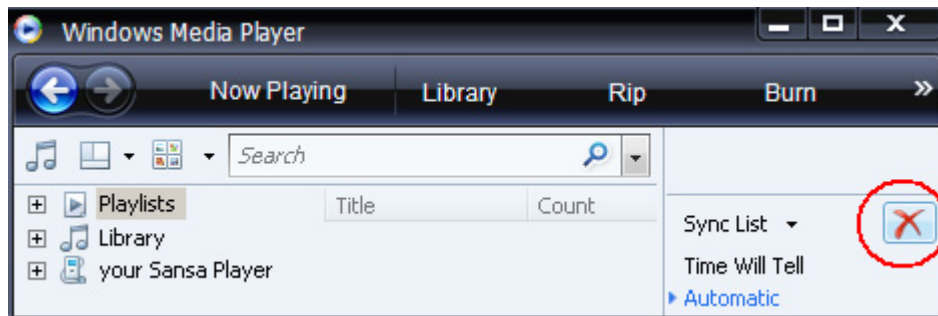
- **My folders and those of others that I can access:**

Use this option to monitor the digital media files stored in your personal Music folder, the files stored in the public Music folders, as well as the files stored in the personal Music that belong to other users on your computer.

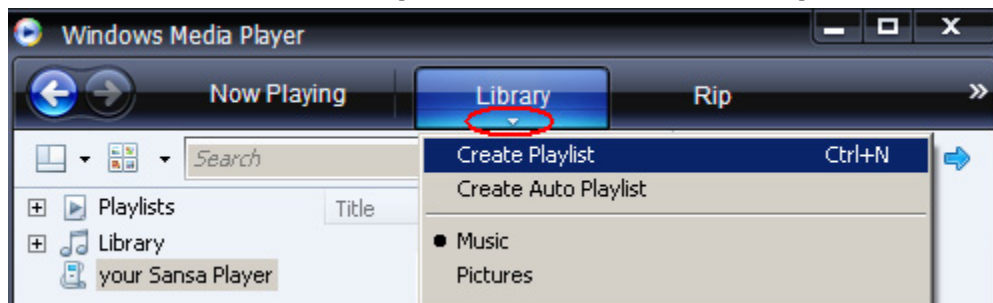
## Creating Playlist

To create playlist for Windows Media Player, follow these steps:

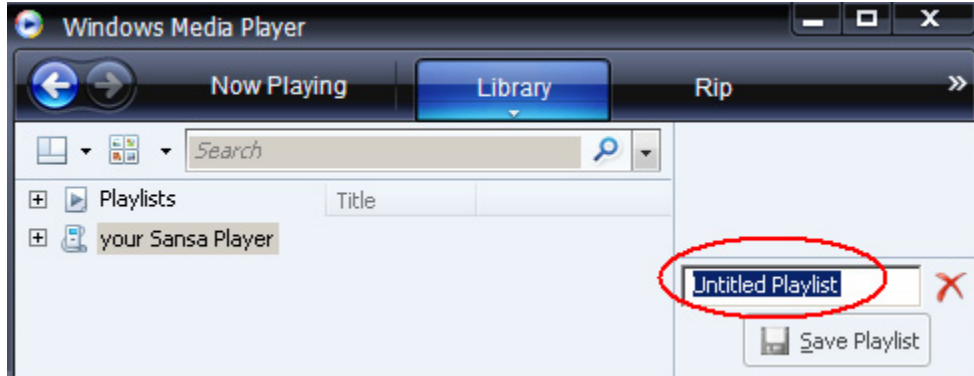
1. Launch Windows Media Player.
2. Clear the List pane by clicking the **Clear List pane button**.



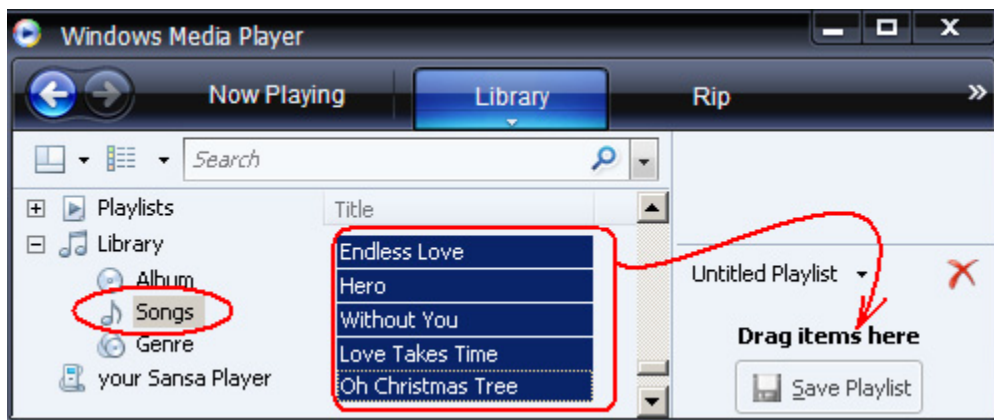
3. Click the arrow below **Library Tab** then select **Create Playlist**.

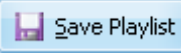


4. Type in the name of your **Playlist**.



5. Click **Songs** from your Library then drag them from **Details pane** to the **List Pane**.

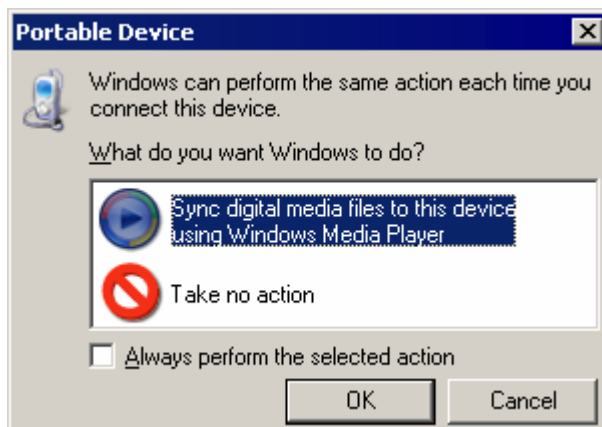


6. To re-arrange the songs, drag them up or down in the **List pane**.
7. Click **Save Playlist**. 

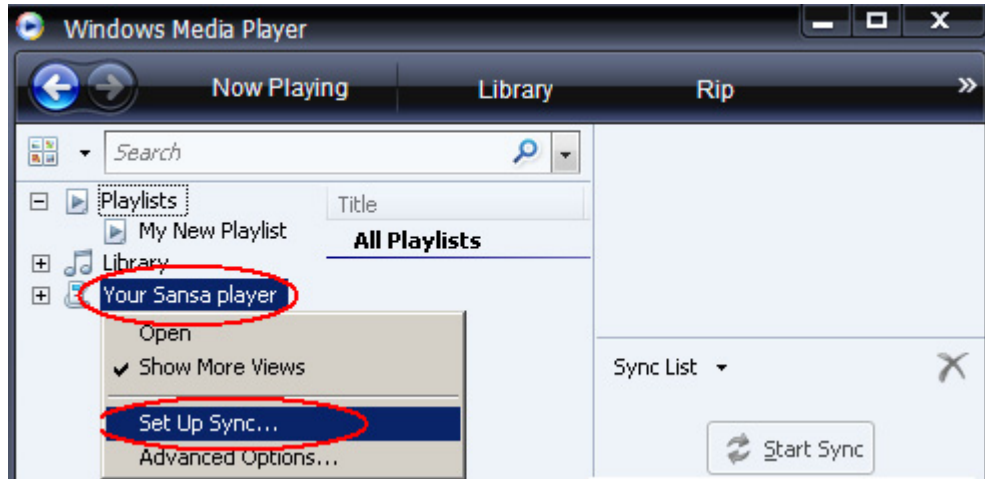
## Transferring Playlist

To transfer playlist to your Sansa<sup>®</sup> player, follow these steps:

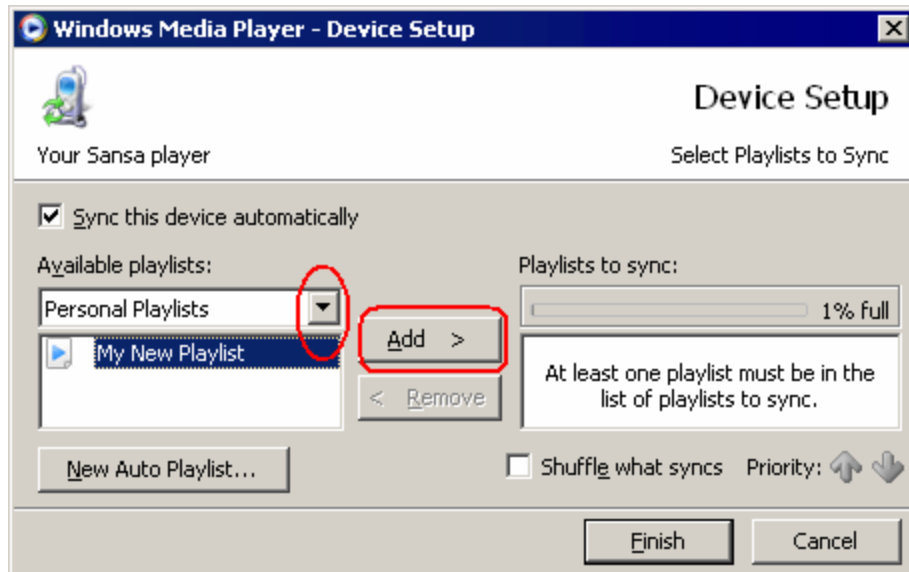
1. Connect your Sansa<sup>®</sup> player to the computer.
2. Select **Sync digital media files to this devices using Windows Media Player** on initial connection.



3. Right-click on **Your Sansa<sup>®</sup> Player** then select **Set Up Sync...**



4. Select **Personal Playlists** from the dropdown menu on the left pane.
5. Highlight the playlists you want transfer to your Sansa<sup>®</sup> player, click **Add** then **Finish**.



6. Synchronization will start as soon as you click Finish. To see the Sync progress, click on **Sync Results**.

*This chapter shows you how to play music on your Sansa® Clip player.*

# Playing Contents

## Playing Music

Follow these steps to play music, audiobooks, and voice recordings:

1. Select **Music** from the Main Menu. Voice recordings are located in Recordings.
2. Select **Artists, Albums, Songs, Genres, Playlists, Recordings (Voice), Audiobooks, and Music Options.**
3. Highlight and select the desired track or file to play.
4. Press **>>|** button to skip to the next song or press-and-hold to fast forward.
5. Press **|<<** button to go back to the beginning of the song or press **|<<** button twice to go back to the previous song. Press-and-hold the **|<<** button to rewind.
6. The following options are available during playback.

### *Repeat Mode*

1. In the playback mode, press **Submenu** button to enter **Music Options.**
2. Move down to highlight **Repeat.**
3. Press **Select** to toggle and choose a repeat mode:
  - Off: No repeat of tracks
  - Songs: Repeat the current track
  - All: Repeat all selected tracks
4. Press **|<<** button to return to previous menu.

### *Shuffle Mode*

1. In the playback mode, press **Submenu** button to enter **Music Options.**
2. Move down to **Shuffle.**
3. Press **Select** button to toggle between Shuffle on and Shuffle off (to play songs in random order, set Shuffle to ON).
4. Press **|<<** button to return to previous menu.

### *MusicEQ*

The Sansa<sup>®</sup> Clip player provides various EQ modes such as: Rock, Pop, Jazz, Classical, and Custom.

1. In the playback mode, press **Submenu** button to enter **Music Options**.
2. Move down and select **Music EQ**.
3. Move down to the desired EQ mode and press **Select**.
4. Press |<< button to return to previous menu.

### *Add song to the GoList*

1. In the playback mode, press **Submenu** button to enter **Music Options**.
2. Move down and select **Add Song to GoList**.
3. Press |<< button to return to previous menu.

### *Remove song from GoList*

1. Press **Menu** button and select **Music** menu.
2. Select **Playlists**.
3. Select **GoList** to play songs saved in the Go List.
4. Press |<< or >>| button to select the song you want to remove.
5. Press **Submenu** button.
6. Move down to **Remove Song from GoList** and press **Select**.

### *Clear the GoList*

1. In the playback mode, press **Submenu** button to enter **Music Options**.
2. Move down and select **Clear GoList**.
3. Select **yes** to clear the list.
4. Press |<< button to return to previous menu.



*This chapter provides you instructions on how to listen to FM broadcast radio and to program the preset stations on Sansa<sup>®</sup> Clip player.*

## FM Radio (if applicable)

The Sansa<sup>®</sup> player includes an integrated FM radio for listening to live broadcast FM stations. Please note that the FM Radio function may not be available in your region.

### Listening to FM Radio

To listen to live broadcast FM station, follow these steps:

1. Select FM Radio from the Main Menu.
2. A radio frequency menu will appear.
3. Press |<< or >>| to adjust and search for the desired frequency, or select preset by pressing **Select**.
4. For fast search, press and hold the |<< or >>| buttons.

### Programming FM Presets

When the Radio Mode is selected for the very first time, the Sansa<sup>®</sup> player will run an auto station searching and store the searched stations as the preset favorite stations. You can program up 40 preset stations. To program the preset stations on your Sansa<sup>®</sup> player, follow these steps:

1. Press the submenu button in Radio mode.  
Select **Add Preset** to save current frequency into presets.
2. Select **Delete Preset** to remove current frequency from presets.
3. Select **Delete All Preset** to clear all presets, and next time when you enter Radio Mode, Sansa<sup>®</sup> player will search automatically.
4. Select **Auto-Scan for Presets** to allow Sansa<sup>®</sup> player to automatically scan and store all available FM radio stations to preset.

NOTE: This action will erase all stored preset stations.



*This chapter shows you how to use your Sansa® Clip player's built-in microphone.*

# Recording

## Voice Recording

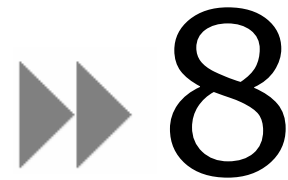
The Sansa® Clip has a built-in microphone allowing you to record your own voice, an interview, or a speech.

To start voice recording, follow these steps:

1. Press the **Menu** button to return to Main Menu.
2. Select **Voice**
3. Press **Play/Pause** to start recording.
4. To pause recording, press **Play/Pause** again
5. To stop recording, press **Select**. A pop-up window will appear on the screen. Select **Yes** to save recording. The recording will be saved in the **RECORD/VOICE** folder.
6. Press |<< button to return to the Voice Menu.

### **NOTE: For Home and Personal Use**

This product is intended to be used for recording and playback for your home and personal enjoyment. Copying and commercial use of copyrighted material without permission of the copyright owner may be prohibited by law. Use of your media player, in compliance with all copyright and applicable intellectual property laws, remains the responsibility of the user of the product.



*This chapter shows you how to delete contents on Sansa<sup>®</sup> Clip player.*

## Deleting Music Files

There are 2 ways to delete music files. You can delete them from the player directly or using the computer.

To delete music files directly from the Sansa<sup>®</sup> player, follow these steps:

1. In playback mode, press **Submenu** button.
2. Select the **Delete Song** item.

To delete music files using the computer, follow these steps:

1. Connect your Sansa<sup>®</sup> to the computer.
2. Select **Open device to view files using Windows Explorer** on initial connection.
3. Locate the folder where your music files are stored.
4. Highlight and delete the music files or folder.

*This chapter shows you how to customize your Sansa<sup>®</sup> Clip player's settings*

## Settings

You can personalize your Sansa<sup>®</sup> Clip player's settings by scrolling down to **Settings** and setting it from the **Main Menu**.

### Equalizer

1. Press **Menu** button to return to **Main Menu**.
2. Move down to **Settings** and select it.
3. Select **Equalizer**.
4. Move down to the desired EQ mode and press **Select**.
5. Press |<< button to return to **Main Menu**.

### Power

You can set the timer under Auto Power Off and Sleep settings to turn off the Sansa<sup>®</sup> player automatically when it is playing for a certain time.

1. Press **Menu** button to return to the **Main Menu**.
2. Move to **Power** and select it.
3. Select **Auto Power Off** or **Sleep**.

### Display – Backlight

The Display Backlight timer program can save power. After having been idled for predefined seconds, the device will trigger the Backlight timer program automatically and cease the backlight. You can press any button to wake the backlight up. To set the backlight timer, please execute the following steps:

1. Press **Menu** button to return to the **Main Menu**.
2. Move to **Settings** and select it.
3. Select **Display**.
4. Select **Backlight**.
5. Press |<< or >>| button to select desired backlight timer.

### Display – Brightness

To adjusting the display brightness for better viewing in different lighting environment, please execute the following steps:

1. Press **Menu** button to return to the **Main Menu**.

2. Move to **Settings** and select it.
3. Select **Display**.
4. Select **Brightness**.
5. Press |<< or >>| button to set the contrast level.

## Language

1. Press **Menu** button to return to the **Main Menu**.
2. Move to **Settings** and select it.
3. Select **Language**.
4. Select a desired language.

## FM Settings (if applicable)

1. Press **Menu** button to return to the **Main Menu**.
2. Move down to **Settings** and select it.
3. Select **FM Settings**.
4. Highlight **FM Stereo** and press **Select** button to choose Mono or Stereo.
5. Move down and highlight **FM Region** and press **Select** button to choose a region.

## Volume

1. Press **Menu** button to return to the **Main Menu**.
2. Move down to **Settings** and select it.
3. Select **Volume**.
4. Highlight the desired volume settings then press **Select** button.

## Reset All

This will reset the player to its original factory settings.

1. Press **Menu** to return to the **Main Menu**.
2. Move to **Reset All** and select it.
3. Select **Save** to reset to factory settings or **Cancel** to stop.

## System Info

This displays information regarding your Sansa<sup>®</sup> Clip (such as firmware rev, available memory, number of songs loaded, etc).

1. Press **Menu** button to return to the **Main Menu**.
2. Move to **System Info** and select it.

# ▶▶ 10

*This chapter helps you get the most from your Sansa<sup>®</sup> Clip player with tips and troubleshooting.*

## Tips & Troubleshooting

**How do I drag music files to my Sansa<sup>®</sup> Clip player?**

As long as the files are WMA or MP3, they can be dragged into the Media folder.

**Which bit rate will the Sansa<sup>®</sup> Clip player support?**

The Sansa<sup>®</sup> Clip player will support 64-320Kbps for MP3 and 32-192Kbps for WMA.

**Why should I update the firmware?**

You should always update the player to the latest firmware to ensure that it functions correctly and has all the latest features.

**What music file formats does the Sansa<sup>®</sup> Clip support?**

The Sansa<sup>®</sup> MP3 Player will support MP3, WAV, WMA, secure WMA, and Audible.

**Some of my music files are on my player, but cannot be played. When I select them, another song begins to play. What is wrong?**

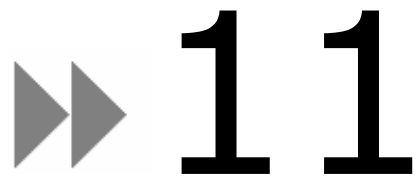
You may not have purchased the rights to play the song on an additional device. To test this, try to play a song that you have copied from an older CD and converted to MP3 format. If you can play that song, but not the song that will not play, then you need to purchase the rights to play the song.

**Is the player compatible with podcast?**

As long as the podcast are in MP3 format and an appropriate bit rate (32-320 kbps), then the player should be capable of playing the files.

**Why does my player say unknown artist/album?**

Normally this is because the ID3 tags or WMA meta data information are missing. On the computer, right-click the song, choose Properties, Summary tab then Advanced. Then you can input the data such as Artist, Album, Song Title, Track Number, Genre, and Year.



*This chapter provides information to help you get service and support for your Sansa® Clip player.*

# Learn More, Service, and Warranty Information

## Getting Technical Support

Before you contact Technical Support, we encourage you to read the **Tips & Troubleshooting** section to see if your question is covered there.

If you have questions about the use or features of your player, please call the SanDisk Technical Support Center for **US**: 1-866-SanDisk (1-866-726-3475), **Worldwide**: see <http://www.sandisk.com/techsupport> for local country phone numbers or fill out an on-line support request at <http://www.sandisk.com/techsupport>.

When you call or contact us for support, please include as much information as you can from your packaging material. This will allow us to help you more quickly.

## Learn More

You can also visit us on the web at <http://www.sandisk.com> to learn more about your player as well as other SanDisk products.

## SanDisk Limited Warranty

SanDisk warrants that this product will be free from material defects in design and manufacture and will substantially conform to the published specifications under normal use for two years from your date of purchase, subject to the conditions below. This warranty is provided to the original end user purchasing from SanDisk or an authorized reseller, and is not transferable. Proof of purchase may be required. SanDisk is not responsible for any failure or defect caused by any third party product or component, whether authorized or not. This warranty does not apply to any third party software provided with the product and you are responsible for all service and repair needed for such software. This warranty is void if the product is not used in accordance with the product instructions, or if it is damaged as a result of improper installation, misuse, unauthorized repair, modification or accident.

To obtain warranty service contact SanDisk at 1-866-SanDisk or send an email to: [support@SanDisk.com](mailto:support@SanDisk.com). You must return the product in tamper resistant packaging, freight prepaid, as instructed by SanDisk. You must obtain a tracking confirmation number, which you may be required to provide to SanDisk. SanDisk will, at its option, repair or replace the product with new or refurbished product of equal or greater capacity and functionality, or refund the purchase price. The warranty duration on replaced product will be that time period remaining on the original product. THIS CONSTITUTES SANDISK'S ENTIRE LIABILITY AND YOUR EXCLUSIVE REMEDY FOR BREACH OF THIS WARRANTY.

SanDisk does not warrant, and shall not be responsible for, any lost data or information contained in any product (including in any returned product), regardless of the cause of the loss. SanDisk's products are not warranted to operate without failure. SanDisk products should not be used in life support systems or other applications where failure could threaten injury or life. This warranty gives you specific legal rights, and you may also have other rights which vary by jurisdiction.

THE FOREGOING IS SANDISK'S SOLE WARRANTY. SANDISK DISCLAIMS ALL OTHER EXPRESS AND IMPLIED WARRANTIES TO THE FULLEST EXTENT PERMITTED BY APPLICABLE LAW. THE IMPLIED WARRANTIES OF MERCHANTABILITY AND FITNESS FOR A PARTICULAR PURPOSE ARE LIMITED TO THE DURATION OF THE EXPRESS WARRANTY. SOME JURISDICTIONS DO NOT ALLOW LIMITATION ON HOW LONG AN IMPLIED WARRANTY LASTS, SO THE ABOVE LIMITATION MAY NOT APPLY TO YOU. IN NO EVENT SHALL SANDISK OR ANY AFFILIATED OR SUBSIDIARY COMPANY BE LIABLE UNDER ANY CIRCUMSTANCES FOR ANY DIRECT, INDIRECT, OR CONSEQUENTIAL DAMAGES, ANY FINANCIAL LOSS OR ANY LOST DATA OR IMAGE, EVEN IF SANDISK HAS BEEN ADVISED OF THE POSSIBILITY OF SUCH DAMAGE. SOME JURISDICTIONS DO NOT ALLOW THE EXCLUSION OR LIMITATION OF INCIDENTAL OR CONSEQUENTIAL DAMAGES, SO THE ABOVE LIMITATION OR EXCLUSION MAY NOT APPLY TO YOU. IN NO EVENT WILL SANDISK'S LIABILITY EXCEED THE AMOUNT PAID BY YOU FOR THE PRODUCT.

## End User License Agreement

SANDISK CORPORATION

END USER LICENSE AGREEMENT

DO NOT DOWNLOAD, INSTALL OR USE THE SOFTWARE UNTIL YOU HAVE CAREFULLY READ THE TERMS OF THIS END USER LICENSE AGREEMENT ("AGREEMENT"). BY DOWNLOADING, USING OR INSTALLING THE SOFTWARE, YOU AGREE TO ALL OF THE TERMS OF THIS AGREEMENT. IF YOU DO NOT AGREE TO ALL OF THE TERMS, DO NOT DOWNLOAD, INSTALL OR USE THE SOFTWARE AND, IF APPLICABLE, PROMPTLY RETURN IT TO YOUR PLACE OF PURCHASE FOR A REFUND. IF THE SOFTWARE WAS INCLUDED WITH YOUR PURCHASE OF HARDWARE, YOU MUST RETURN THE ENTIRE HARDWARE/SOFTWARE PACKAGE IN ORDER TO OBTAIN A REFUND. IF THE SOFTWARE WAS ACCESSED ELECTRONICALLY, CLICK "NOT ACCEPT" TO STOP THE DOWNLOAD PROCESS.

The firmware, computer programs, device drivers, data or information ("Software") is provided to each person who downloads, uses or installs the Software ("you" or "your") under the terms of this Agreement between you and SanDisk Corporation ("SanDisk," "we," or "us"), and may be subject to additional terms and conditions in an agreement between you and SanDisk's third party licensors ("Licensors"). The Software is owned by SanDisk or its Licensors. The Software is protected by copyright laws and international copyright treaties, as well as other intellectual property laws and treaties.

1. Software License. Subject to the terms and conditions contained herein, SanDisk grants to you a limited, non-exclusive, non-sub licensable, transferable in accordance with these terms, royalty-free license under SanDisk's intellectual property rights to use the Software in executable form solely for your personal use only with a SanDisk product and only on a single computer or other hardware device at any



given time (the "License"). The Software is "in use" when it is either downloaded, copied, loaded into RAM or installed into the hard disk or other permanent memory of a computer or other hardware device.

2. Restrictions. SanDisk and its Licensors retain all rights in the Software not expressly granted to you. You may not modify, adapt, translate or create derivative works (new versions) of the Software. No source code is provided under this Agreement. You may not reverse engineer, disassemble, decompile, rent, lease, or encumber the Software, or re-create or discover the source code of the Software. You may not embed or combine the Software within any other software product or device. The Software contains proprietary and confidential information of SanDisk and its Licensors, which you agree not to discover or reveal to others. Any and all permitted copies of the Software that you make or distribute must be unmodified, must contain all of the original Software's proprietary notices, and must include or be accompanied by this Agreement. You may not separate the Software into component parts for sublicense, distribution or transfer to a third party.

3. DISCLAIMER OF WARRANTIES. TO THE MAXIMUM EXTENT PERMITTED BY APPLICABLE LAW, THE SOFTWARE IS PROVIDED "AS IS" AND "AS AVAILABLE" WITH NO WARRANTIES AND NEITHER SANDISK NOR ITS LICENSORS MAKE ANY REPRESENTATION OR WARRANTY, STATUTORY OR OTHERWISE, IN LAW OR FROM THE COURSE OF DEALING OR USAGE OF TRADE, EXPRESS OR IMPLIED, INCLUDING WITHOUT LIMITATION, ANY WARRANTIES OF MERCHANTABILITY, FITNESS FOR A PARTICULAR PURPOSE, NON-INTERFERENCE, OR NON-INFRINGEMENT OF ANY THIRD PARTY INTELLECTUAL PROPERTY RIGHTS, OR EQUIVALENTS UNDER THE LAWS OF ANY JURISDICTION. YOU ASSUME THE ENTIRE RISK AS TO THE QUALITY AND PERFORMANCE OF THE SOFTWARE. SHOULD THE SOFTWARE PROVE DEFECTIVE, YOU, AND NOT SANDISK, ITS LICENSORS OR RESELLERS, ASSUME THE ENTIRE COST OF NECESSARY SERVICING, REPAIR, OR CORRECTION.

4. LIMITATION OF LIABILITY. TO THE EXTENT NOT PROHIBITED BY LAW, IN NO EVENT WILL SANDISK OR ITS LICENSORS, OR THEIR RESPECTIVE DIRECTORS, OFFICERS, EMPLOYEES, CONSULTANTS, LICENSORS, LICENSEES OR AFFILIATES, BE LIABLE FOR ANY INDIRECT, INCIDENTAL, SPECIAL, CONSEQUENTIAL, OR EXEMPLARY DAMAGES, ARISING OUT OF OR IN CONNECTION WITH THE DOWNLOAD, DISTRIBUTION, USE OR PERFORMANCE OR NON-PERFORMANCE OF THE SOFTWARE, EVEN IF SANDISK HAS BEEN ADVISED OF THE POSSIBILITY OF SUCH DAMAGES. THE FOREGOING LIMITATIONS OF LIABILITY SHALL APPLY NOTWITHSTANDING ANY FAILURE OF ANY REMEDY PROVIDED FOR HEREUNDER IN ITS ESSENTIAL PURPOSE. IN NO EVENT WILL SANDISK'S OR ITS LICENSORS' TOTAL LIABILITY TO YOU EXCEED THE AMOUNT YOU PAID TO US FOR THE USE OF THE SOFTWARE.

5. The Software is provided with "RESTRICTED RIGHTS." Use, duplication or disclosure by the Government is subject to restrictions as set forth in FAR 52.227-14 and DFARS 252.227-7013 et seq. Use of the Software by the Government constitutes acknowledgement of SanDisk's proprietary rights therein. Contractor or Manufacturer is SanDisk Corporation, 601 McCarthy Blvd. Milpitas, CA 95035.

6. Transfer. If you sell or otherwise transfer the SanDisk product that incorporates the Software as a whole, you may transfer the Software as fully integrated into such product provided that you also supply this Agreement to the purchaser or recipient of the product, at which time all of your rights under this Agreement will immediately cease. Except as stated above, you may not assign or transfer this Agreement in part or in whole, and any attempt to do so shall be void.

7. Termination. We may terminate this Agreement and the license immediately and without notice if you breach it. Upon termination of this Agreement, you must delete or destroy all copies of the Software.

8. High Risk Activities. The Software is not fault-tolerant and is not designed or intended for use in hazardous environments requiring fail-safe performance, or any other application in which the failure of the Software could lead directly to death, personal injury, or severe physical or property damage (collectively, "High Risk Activities"). SANDISK AND ITS LICENSORS DISCLAIM ANY EXPRESS OR IMPLIED WARRANTY OF FITNESS FOR HIGH RISK ACTIVITIES AND SHALL NOT BE LIABLE FOR ANY LIABILITIES OR DAMAGES ARISING FROM SUCH USE.

9. General. This Agreement contains the entire understanding between the parties with respect to your use of the Software. If any part of this Agreement is found void and unenforceable, it will not affect the validity of the balance of this Agreement, which shall remain valid and enforceable according to its terms. This Agreement is governed by and construed under the laws of the State of California and controlling U.S. federal law without regard to conflicts of laws provisions thereof. The U.N. Convention on Contracts for the International Sale of Goods shall not apply to this Agreement. Any action or proceeding arising from or relating to this Agreement shall be adjudicated in the state or federal courts of Santa Clara County, California, and the parties hereby agree to the exclusive jurisdiction and venue of such courts. You will not remove or export from the United States or re-export from anywhere any part of the Software or any direct product thereof to any country in violation of U.S. Export Administration Regulations, or a successor thereto, except in compliance with and with all licenses and approvals required under applicable export laws and regulations including, without limitation, those of the U.S. Department of Commerce. Any waivers or amendments of this Agreement shall be effective only if made in writing and signed by an authorized representative of each party. You agree that the Licensors are third party beneficiaries of this Agreement to enforce your performance of the terms and conditions of this Agreement. The provisions of Sections 2, 3, 4, 5, 6, 7, 8 and 9 shall survive the termination or expiration of this Agreement.

## FCC Regulation

This device complies with part 15 of the FCC Rules. Operation is subject to the following two conditions:

1. This device may not cause harmful interference, and
2. This device must accept any interference received, including interference that may cause undesired operation.

This equipment has been tested and found to comply with the limits for a Class B digital device, pursuant to Part 15 of the FCC Rules. These limits are designed to provide reasonable protection against harmful interference in a residential installation. This equipment generates, uses, and can radiate radio frequency energy and, if not installed and used in accordance with the instructions, may cause harmful interference to radio communications. However, there is no guarantee that interference will not occur in a particular installation. If this equipment does cause interference to radio or television reception, which can be determined by turning the equipment off and then on, the user is encouraged to try to correct the interference by one or more of the following measures:

1. Increase the separation between the equipment and receiver.
2. Correct the equipment to a different outlet so that the equipment and receiver are on different branch circuits.
3. Consult the dealer or an experienced radio / TV technician for help.