

JUMPER

# Personal Computer

个人电脑

User's guide of PC

使用说明书

Before using the PC, please read the following information and put the document at hand for reference  
使用电脑前请阅读以下信息并将文档放于近处以备参考



**Announcement**

Dear users:

Thank you for purchasing and using our products. For the sake of your safety and interests, before using the products, please carefully read the product specifications as well as all the materials attached to the PC. If you don't operate and use the products according to the product specifications, we shall not assume any responsibility for any personal harm, assets or other losses incurred.

The product specifications (hereinafter referred to as specifications):

- The proprietary of the specifications belongs to our company;
- The proprietary of trademark and trade name mentioned in the specifications belongs to their respective owners;
- If the content of the specifications doesn't conform to that of the actual product, the actual product shall be binding.

If you have any misunderstanding or objection about any content or article & clause in the specifications, please put forward a written objection within 7 days after purchasing the PC. Otherwise, it shall be deemed that you have agreed to, understood and accepted all the contents of the specifications.

**Catalogue**

**1. Special notice**

1.1 Special hint.....2  
 1.2 Please be sure to read the important hints for using laptop computer.....2  
 1.3 Special notice.....3  
 1.4 Please be sure to read the instructions on the battery of laptop computer.....4  
 1.5 Instructions on safety.....7

**2. Product overview**

2.1 Overview.....9  
 2.2 Introduction to parts & components.....9  
 2.3 Unpacking and inspection.....11

**3. General knowledge on basic operation**

3.1 Indication lamp on system status.....12  
 3.2 To shut off the computer.....12  
 3.3 Functions of keyboard.....13  
 3.4 Touch pad.....13  
 3.5 Display screen.....14  
 3.6 Network card.....14

**4. Setup of BIOS (basic input & output system)**

4.1 Method on BIOS Setup.....15  
 4.2 Main (main setup).....15  
 4.3 Boot (booting picture and sequence setup of booting equipment).....16  
 4.4 Security (setup of password protection).....16  
 4.5 Exit (exit setup).....17

**5. Installation of driver program and specification of use**

5.1 Installation of driver program.....18

**6. Fault analysis and elimination**

6.1 Problem on sound.....19  
 6.2 Problem on HD.....19  
 6.3 Problem on display.....20  
 6.4 Problem on EMS memory.....20

Special declaration.....21

Annex A Product specifications .....22

## 1. Special notice

### 1.1 Special hint

In order to facilitate understanding and arouse your attention, as for product safety or information needing special attention to, we will give you the hints in this chapter or the chapters that follows according to the following levels and special warning words. These special warning words are expressed as follows:

**[Danger]**---indicating cautions against high risks;

**[Warning]**—indicating cautions against medium risks;

**[Note]**—indicating that attention should be paid to light risks;

**[Prohibition]**---indicating that dangerous operation should be prohibited;

**[Reminder]**—indicating that attention should be paid to safety or other contents;

This chapter doesn't provide all the safety information. For the sake of your safety and interests, we put the safety information on parts of the products in the subsequent chapters as needed. No matter where these safety information are located, you should carefully read them.

Similarly, besides the special notices expressed with special warning words, you should give same attention to other contents and introduction in the specifications.

### 1.2 Please be sure to read the important hints for using laptop computer

Laptop computers belong to high-tech and precision products. Please be sure to carefully read the following use hints.

#### 1. Maintenance of LCD

- ⊗ Don't put any heavy things on the laptop computer.
- ⊗ When using suitcase or backpack, please make sure that there aren't too much things inside and no additional pressure is put on the laptop computer bag and the back part of LCD.
- ⊗ Please don't scratch, twist or strike the screen surface of LCD.
- ⊗ Don't place the screen of LCD in an environment where the temperature exceeds 40 Celsius degrees or the humidity exceeds 90%.
- ⊗ Don't expose the screen of LCD to direct sunlight or strong fluorescence.
- ⊗ Don't place any things between LCD screen and keyboard, such as pencil, documents and so on, which will destroy or scratch LCD screen. Please don't use corrosive detergent to wipe LCD screen, which will destroy screen.

2. In order to prevent computer from getting overheated, please make sure not to block heat disperse ventilation vents in the computer operation.

3. When the computer system is accessing floppy drive, CD-ROM, mobile storage and other mediums, please don't remove the mediums. Otherwise, it will lead to the system breakdown or data destruction.

4. Please don't open the computer shell when the system is running because this will lead to

data loss or destruction. The formatting of HD can delete all the data in HD. Please back up the data in advance. As for important data, please make sure that they have been timely backed up in other storage mediums. The company shall not assume any responsibility for the data losses incurred.

5. In order to guarantee the safety of yourself and computer, please make sure that the power has been corrected grounded when using the external power supply. If you won't use the computer for a long time, please pull off the power plug in order to avoid transient voltage causing system destruction. The power supply should be stable and be free from interference. When you are not clear about the local specifications on electric appliance, please consult your distributors or your local power company. For the sake of safety, please don't damage the grounding line of power socket. When plugging off the power, you should avoid pulling off the electric wire directly by pulling. Please make sure to pull from the root of socket so as to guarantee safety. Before cleaning the computer, please remember to firstly plugging off the power socket and then remove the battery. Please don't disconnect the power adaptor.

6. Please don't use the power adaptor not attached to the laptop computer because this will damage the computer.

7. Please don't take or place the laptop computer with one hand or put your laptop computer in an unbalanced state.

8. This product can only be disassembled by authorized service staff of agent company. Please make sure to keep the sealing strip intact. Otherwise, the warranty or three guarantees service may be influenced.

9. If you have set up a password, please keep it in mind. Otherwise, your computer cannot be started. If you have forgotten the password, please contact the supplier or authorized maintenance station. However, this may destroy all of your data.

10. When the CD-ROM is popped out manually, please don't use pencil and other breakable goods so as to avoid blocking the popping hole in case of emergency.

### 1.3 Special notice

Applicable group

[Note]

You should master a certain basic common language on computer in order to operate the computer. Meanwhile, the computer is not suitable for independent operation by children. If necessary, children must be accompanied by adults.

### Working environment

[Danger]

In order to prevent accidental failure, the computer should run within the following defined environmental scope:

Content	Scope of application	Remarks
Temperature of storage and transportation	-40°C to -50°C	
Relative humidity of storage and transportation	20% - 93%(40°C)	
Atmospheric pressure	86 kPa - 106 kPa	
Adaptation capability of power	220V ±22V, 50Hz ±1Hz	
Working humidity	35% - 80%	
Working temperature	10°C - 35°C	

**[Warning]**

In order to prevent the computer from being harmed by the environment (dampness, dust, food, liquid, direct exposure to sunlight etc), the computer should be placed in a dry place with good ventilation.

In order to prevent the computer from being disturbed and damaged by the magnetic field, please keep it away from other household electric appliances (such as Television set, air conditioner etc).

Please don't splash liquid or other impurities into the computer. Otherwise, it may lead to short-circuiting of its internal components, which will further give rise to electric shock or fire accidents.

**[Note]**

If the computer is switched on and started when the low temperature condition hasn't been resumed, it may lead to unrepairable faults on the computer. Therefore, before using the computer, please firstly make sure that the computer is resumed for over 2 hours under the room temperature (above 10 Celsius degrees).

**Before being used****[Warning]**

After the computer is stored and transported under the environment of lower than 10°C, the computer should be placed for over 2 hours under the room temperature condition of 10°C — 35°C before being used in order to prevent the computer temperature from getting excessively low, which thus gives rise to electrified damages. Please don't disassemble the package during the period. Let the computer resume its temperature naturally and avoid the temperature increasing excessively quickly, which thus leads to electrified damages.

**[Note]**

Before using the computer, please make sure that the computer connection, power use and other affairs conform to the requirements in the specifications.

**Removal, transportation and storage****[Note]**

When moving the computer, special care should be taken.

The computer should be placed in the original packing box in case of transportation. You should pile and place the packing box according to the symbol and indication of packing &

transportation diagram. You should also use closed cases in case of removal.

In case of storage, the packing materials should be placed beyond children's reach in order to prevent the occurrence of unsafe conditions.

According to the relevant interpretation of GB/T9813-2000 General Specifications of Micro-computer, after the computer is stored and transported under the environment of lower than 10°C, before using the computer, please place the computer for over 2 hours under the room temperature condition of 10-35 Celsius degrees in order to avoid electrified damages due to excessively low computer temperature. Please don't disassemble the package during the period. Let the computer resume its temperature naturally and avoid the temperature increasing excessively quickly, which thus leads to electrified damages due to computer frosting and dewing.

**Battery****[Note]**

To replace the lithium battery of computer incorrectly may give rise to explosion risks. Please make sure that the replacement and installation of lithium battery be done by professional maintenance staff. Only battery products of same or equivalent types recommended by manufacturers can be used for replacement. The proper discarding of battery will lead to serious environmental pollution. Please dispose of the consumed battery in a proper way or return the waste & used battery to the post-sales & maintenance department for treatment so as to avoid environmental pollution.

**1.4 Please be sure to read the instructions on the battery of laptop computer**

Please obey the following rules and use your battery properly.

Newly-purchased battery:

The new battery can only be charged after the original electricity capacity is fully consumed.

**Lifespan of battery:**

Un-proper use and maintenance may shorten the battery lifespan. In order to increase the battery lifespan and enhance the battery functions, the battery should be fully and thoroughly discharged every other 30 days and be re-charged until saturation.

**Battery gauge:**

Inside the battery there is a built-in gauge, which can calculate the electricity of battery. The battery gauge depends on the battery memory to determine the extent whether to stop charging and discharging. However, if you frequently do incomplete charging or incomplete discharging, the battery memory will be in confusion.

In order to increase the accuracy of the battery gauge, you should do complete discharging and complete charging until saturation for at least one time every other 30 days or after 20 times incomplete discharging.

Due to the battery's own characteristics, the quantity of electricity will gradually decrease and the duration of operation will be shortened. Within the battery warranty period, the battery may not be charged to 100%. However, this doesn't influence the normal operation. This is a common phenomenon.



**To save the battery power:****A. Senior power management:**

Your laptop computer has a function of senior power management, which can slow down the speed of processor and ambient parts. The use of these functions will help to save the battery power

**B. The brightness of LCD:**

The LCD may consume a lot of power. Therefore, if the brightness is adjusted down, it will save some power.

**C. Software and peripheral:**

As for different software and peripherals, even if they are not the program or equipment in use, they still consume power. In order to save the battery power, we recommend as follows:

- If the Modem or other communication programs are not used, these programs shall be shut off.
- Take out the un-used PC card from the computer slot.

Because even in case of pause mode, PC card will also quickly consume the battery power.

- To pull off the unnecessary peripherals from the computer socket.

**Q & A:****How to fully discharge the battery?**

Let the computer run with the battery power until the computer automatically shuts off due to excessively low power. Even when you see the information on excessively low power on the computer screen or when you hear the warning beep sound of excessively low power, you cannot manually shut off the computer. You should let the continuously running state of the computer go on until all the battery power is consumed and the computer is automatically shut off.

**How to fully discharge the battery?**

When the battery is being charged, you should generally wait until that the battery indication lamp on the computer indicates the charging has been completed, i.e. reaching the saturation. For details, please refer to the indication lamp of power state in this manual.

**How to maintain the battery?**

You should do one complete discharging and charging at least every other 30 days or after every other 20 times of incomplete discharging.

**Special attention:**

The battery can only be used in this laptop computer.

The un-proper replacement of battery kinds may lead to explosion risks. Only the original battery of same type or the battery kinds of same levels recommended by the original manufacturer can be used for replacement.

Please don't disassemble the battery.

Please expose the battery to fire or water.

In order to prevent the fire accident, combustion or damages on the battery, the two poles of

the battery cannot be touched with metallic articles.

Special care should be taken when handling damaged battery or battery with liquid leakage. If you touch the battery liquid un-carelessly, please rush to flush with soap and water. If it touches your eyes, please wash your eyes with water for 15 minutes and rush to hospital for medical treatment.

If the environmental temperature is on the high side, please don't charge the battery.

When storing the battery, please don't expose the battery to a high temperature.

**Power**

[Danger]

You need to use quality three-core grounding power plug and socket with grounding protection. The power socket should be finally inserted into power with sound grounding. A sound grounding is an important guarantee for the normal running of your computer. If you replace standard power lines without authorization, it may lead to serious results. Meanwhile, the maximum length of power lines shouldn't exceed 4.5 meters.

Before using the power, you should confirm that the power conforms to the requirements of computer use according to the specifications of power plug and socket. Quality power and excellent grounding are important guarantee for the normal running of the computer.

Otherwise, it may lead to serious results.

[Danger]

During the thunderstorm period, the use of products may harm the safety of your body and other assets. Therefore, during the weather of thunderstorm, please avoid using the computer, disconnect the telephone line, network line, power line and other conducts which are connected with outside. In case of thunder, please don't insert and pull these lines & cables.

[Warning]

Try not to insert the power line of 110V into the power line of 220V. You should also try not to change the voltage selector switch of the computer power. Any change may lead to personal body harm or damage of equipment.

[Note]

Carefully examine the AC power line attached when purchasing the computer. In case of any problems, please contact relevant dealer.

The power line used for microcomputer must conform to the following safety regulations:

- Conformity to CCC certification
- The power socket should be finally inserted into the power line with excellent grounding
- The power socket must conform to GB 1002—1996 and GB2099.1-1996

**Ergonomics**

[Reminder]

When you work or play games on a computer, please adjust your environment and arrange your computer devices so as to make your body in a comfortable and flexible state. The following suggestions can help you obtain a more comfortable environment.

1. Supporting your back:

Select a chair which can support the lower part of your back.

Adjust the height of working surface and chair so that they are in a comfortable and natural state.

#### 2. Making a comfortable posture for legs:

Remove the articles under the table and make the position and movement of your legs become more comfortable.

If your legs cannot comfortably rest on the floor, just use one footstool.

#### 3. Reducing the bending and twisting of your neck:

Place LCD in the central position before you. If you refer to documents more frequently than display, please consider putting documents directly before you and the display should be slightly on the left side.

Please consider using document frame and place the document in a level near to your eyes. Place the top part of screen in a level near to your eyes. As for those with astigmatism, it may be necessary to put the screen lower, or wear glasses suitable to computer work through consultation with qualified health experts.

#### 4. Decreasing the fatigue of eyes:

Put the screen in your arm's reach and comfortably sit before the screen.

Avoid glare. The position of display should be far away from the light source generating glare. Or you should use window curtain to control the light strength.

Please remember to clean the screen. If you wear glasses, please clean the glasses, too.

Please adjust the brightness and contrast of screen as well as the font size to a state which make you comfortable.

When operating keyboard and touch pad, please lightly touch the keys and keep your hands and fingers relaxed. Just slightly strike the keyboard.

When single-click the touch pad or use game pole or other game controllers, you should slightly strike the keyboard.

When typing words, avoid putting your palm or wrist on the object surface with wide angle for relaxation. If necessary, relax your palm during the pause of typing.

When not typing words, just relax your arms and hands. Don't relax on the edge of objects, such as table edge.

Adjust your chair and not allow your seat to extrude the back of your knees.

### 1.5 Instructions on safety

1. The power socket hole should be installed near the equipment or places easy for operation. When inserting and pulling the power line, avoid directly pulling out the power line by pulling and dragging. Please be sure to pull from the root of plug so as to guarantee the safety and caution against electric shock. Please don't disassemble the power adaptor.

2. Not to place the product in places with easy access to water.

3. In case of installation, please place the product on a stable supporting foundation. This product may fall off due to un-stable placement, which leads to serious damages.

4. Not to place the products in places where there are frequent flow of people so as to avoid trampling the electric wire. Please make sure that no articles are placed on the electric wire.

5. Follow all the warning information and indication on the products.

6. If you don't plan to use the product for a long period, please pull off the power socket so as to avoid excessive transient voltage, which can cause damages.

7. Please don't splash any liquid on the product. This action may lead to risks of fire accidents or electric shock.

8. In case of the following conditions, it should be serviced by professionals:

a. The power line or socket has been destroyed or torn off.

b. The liquid is splashed to the product.

c. The product is drenched by raining or splashed by water.

d. When you follow the instructions on operation, the product is still unable to run normally.

e. If the product once fell off or its shell has been destroyed.

f. If the product has apparent damages.

9. For the usage and storage temperature of this product, please refer to the product specification in annex A. If the product is not used and stored within the defined temperature scope, it may lead to permanent damages on the product.

10. Please don't use the power adaptor where it's near to water or other liquids. Please don't splash liquid to the power adaptor.

Note: All the photos & diagrams in this manual are schematic diagrams and can only be used for reference. The actual use should be based on the object.

## 2. Product overview

### 2.1 Introduction

Product name: laptop computer

Series and type: V2 type

Characteristics of product performance:

The latest mobile computation technology of VIA®

The laptop computer adopts the latest mobile computation technology of VIA and has a better performance.

The system expansibility

The system allows the upgrading and substitute of EMS memory and HD capacity. When replacing substitute products for capacity expansion, please consult your local distributor or go to designated maintenance department for operation.

Clear LCD

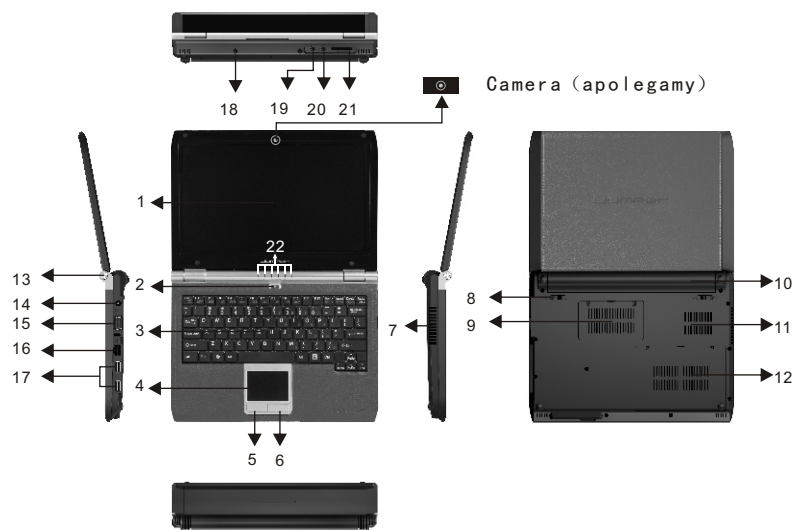
The laptop computer has a backlight LED, which brings you clear and bright colorful words and images.

The feature of communication

This laptop computer is equipped with a built-in 802.11AGB wireless solution for LAN.

### 2.2 Introduction to parts & components

(Note: The following images are schematic diagrams and the real objects shall be binding)



#### 1. Display

The data and image in the computer shall be displayed on the screen.

#### 2. Power button

It's used for starting/shutting off the computer.

#### 3. Keyboard

Keyboard can be used for data entry.

#### 4. Touch pad

The touch pad is a built-in pointer device. Its function is similar to that of mouse.

#### 5. Left key of mouse

#### 6. Right key of mouse

#### 7. Fan grid

The fan grid is used for hot air disperse. Please don't fully block the vent of air flow.

#### 8. Battery locking bolt

The battery locking bolt can be used for locking or releasing battery pack.

#### 9. Cover of EMS memory

There is a DDR dynamic memory module under the cover.

#### 10. Battery pack

It can power the computer if the external power is not connected.

#### 11. Fan grid

The fan grid is used for hot air disperse. Please don't fully block the vent of air flow.

#### 12. Cover of HD

The HD is located under the cover.

#### 13. Rotating shaft

#### 14. DC-IN socket

Connecting the power adaptor

#### 15. VGA port

Used for connecting external monitor

#### 16. RJ-45 interface

Connecting network line

#### 17. USB port

Used for connecting USB devices

#### 18. Screw hole

#### 19. Socket for microphone

External microphone

#### 20. Socket for earphone

External earphone

#### 21. Socket for SD card

SD card reader

#### 22. LED indicator lamp

Whether the light is on or not indicates different status (for details, please refer to the following section)

#### Special hint

Don't place any things between LCD screen and keyboard, such as pencil, documents and so on, which will destroy or scratch LCD screen. Please don't use corrosive detergent to wipe LCD screen, which will destroy screen. In order to prevent the computer from getting overheated, please be sure not to block the heat disperse ventilation vent when working on the computer. This product can only be disassembled by authorized service staff of agent company. Please make sure to keep the sealing strip intact. Otherwise, the warranty or three guarantees service may be influenced.

### 2.3 Unpacking and inspection


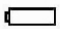



Please carefully remove the package and take out the computer and other accessories. If any loss and missing are found, please immediately contact distributors. Please store the original packing materials for replacing goods.

Generally, you will have the following parts & components

1. Laptop computer
2. Power adaptor
3. User's manual
4. Disk on driver program
5. Battery
6. Warranty card
7. Quality certificate

## 3. Basic common knowledge on computer operation

### 3.1 Indicator lamp for the system status

LED icon & symbol	Indicating contents
	The blue lamp indicates that the system is in running status.
	The flashing orange light indicates that the battery is being charged. When the system is powered by battery, the flashing orange light indicates that the system is running. However, the battery electricity is on the low side. The green light indicates that the battery has been fully charged.
	The green light indicates that the system is reading CD-ROM or HD.
<b>WLAN</b>	The flashing green light indicates that the wireless network card is currently switched on.
	The green light indicates that the numeric keyboard has been opened.
	The green light indicates that the Caps Lock on English entry mode has been started.


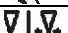

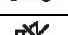

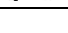





### 3.2 Stop the computer

When you finish your work, you can shut off the computer power or let the computer enter the mode of standby or hibernation:

Mode of stopping	Method	Method on re-starting or usage
Directly shut off the power	Please follow the program for shutting the operation system. By doing so, you can avoid the losses of data or damages of software. If the system is halted due to the problems on hardware	Using the power button

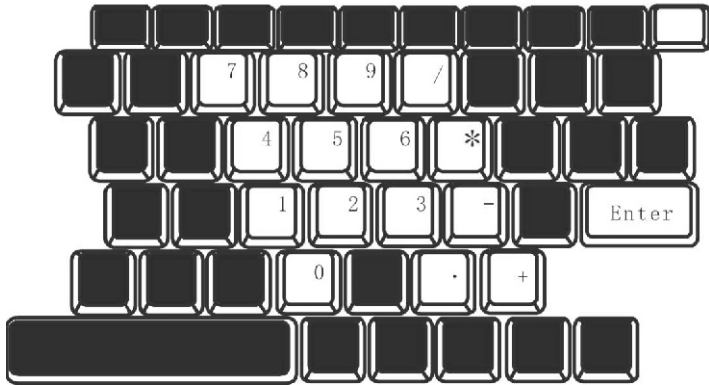
	or software, you can use the power button to shut off the computer.	
Standby	According to your setup of Windows, the system will enter the standby status according to following method: Close the computer cover Use the power button	Using the power button
Hibernation	According to your setup of Windows, the system will enter the hibernation status according to following method: Close the computer cover Use the power button	Using the power button

### 3.3 Function of keyboard

Icon	Key pressing action	Function
	Fn+Esc	Making the system enter the hibernation mode
	Fn+F1	Shutting off the function of wireless network card
	Fn+F2	Shutting off the function of Bluetooth (this function is optional)
	Fn+F3	Mute
	Fn+F4	Shutting the mouse function
	Fn+F5	Repeatedly switch among the three image entry mode, i.e. only LCD, only CRT screen, and LCD and CRT screen used simultaneously
	Fn+F6	Decreasing the brightness of LCD
	Fn+F7	Increasing the brightness of LCD
	Fn+F8	Decreasing the volume of loudspeaker
	Fn+F9	Increasing the volume of loudspeaker
	Fn+F10	Shutting off the display screen

You can start the numerical keyboard of internal keys by pressing Numlock. The numeric is displayed at the right lower corner of keys. The numerical keyboard contains the keys for the basic calculation, i.e. plus, minus, times and divide.

Press the Numlock once again, the original keyboard function will be resumed.



### 3.4 Touch pad

The built-in touch pad is a position device compatible with PS/2. You can feel the movement on its surface. Move your finger on the surface of touch pad, the cursor will follow.

### 3.5 Display screen

In order for the comfort of your eyes, your laptop computer is equipped with TFT LCD, which supports high resolution and real color functions. It brings marvelous visual excitement.

To prolong the lifespan of display screen

To obey the following rules can prolong the lifespan of display screen.

1. To adjust the brightness of screen into the minimum brightness, which is comfortable to your eyes.
2. When using it on the table, please connect an external monitor and shut off the display screen of the laptop computer.
3. Don't close the option of entering the pause mode in shutting off the power management.
4. If the AC power is used and there is no external monitor, please don't switch to the pause mode when not using it.

[Note] In order to prolong the battery lifespan, adjust the brightness to the minimum degree under the precondition of comfortable visual enjoyment. In this way, the internal light source can use less power.

### 3.6 Network card

The laptop computer is equipped with a built-in Ethernet network card conforming to 10/100Base-TX standard. Insert one end of the LAN line into RJ-45 interface at the right side of your computer. Then you can realize the data transfer through the internet.

Open or close wireless network

Your computer is equipped with a built-in wireless network card. Please follow the hint of the operating system for setup and access of the wireless network. It will take some time for your computer to connect the wireless network. Please consult the local service provider of wireless network.

## 4. Setup of BIOS (basic input & output system)

In this chapter, we will teach you how to enter the BIOS setup program as well as the setup of control options for all kinds of hardware. You will also learn how to use the setup of the built-in safety protection.

The setup of common program is a hardware status program built in the BIOS of the laptop computer. It can execute and maintain many hardware functions. It's a software enabling operation with the menu mode and allowing the easy setup and change of set value.

BIOS contains the ex-works pre-set value of laptop computer. However, you still have a lot of opportunity to modify the pre-set values in BIOS. When the hardware is altered, such as upgrading, in case of temporary conditions, or when you decide to self-determine the set value of hardware so as to meet the special needs, it may be necessary for you to start the BIOS setup program.

BIOS can restrict the access by users by setting up passwords. This is an important function because the laptop computer usually keeps a lot of materials and the unauthorized access can be prevented.

### 4.1 Method on use of BIOS Setup

The cases where you must execute the BIOS setup:

In case of any problem founding in the booting test, some information will appear on the screen, requiring you to execute the BIOS setup.

You need to resume the default value.

You need to change the setup value according to the specific hardware.

You need to change the setup value in order to acquire the optimum system performance.

If you plan to execute the BIOS setup, press the Delete key when starting the computer.

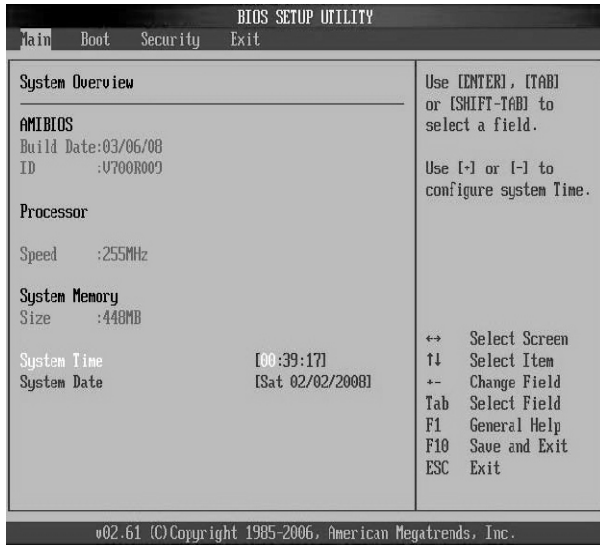
How to select

For one option, you only complete the setup through two-level or three-level options. The majority of these options must pass three-level options: menu title, drop-down menu and sub-menu.

To move and select through keyboard. You can see the information on keyboard at the right lower corner of the screen.

### 4.2 Main (main setup)





System Time : setup of the system time

System Date : setup of the system date

### 4.3 [Boot] Menu



Boot Device Priority: mainly used in selecting the sequence of boot device;

Hard Disk Drives: used for selecting the sequence for starting hardware devices;

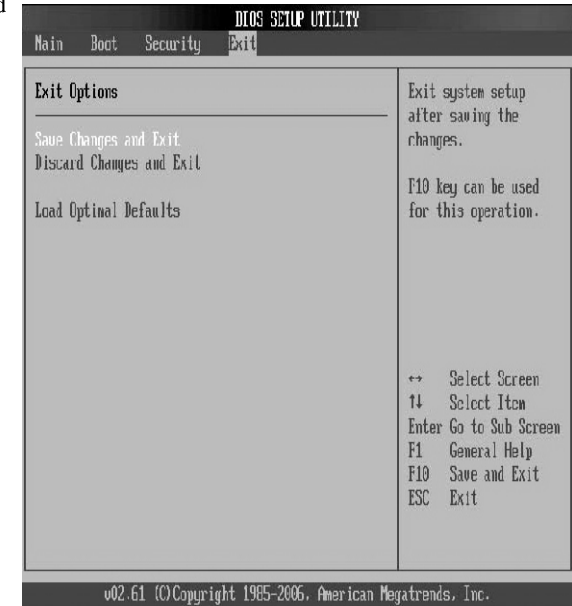
Removable Drives: used for selecting the sequence for starting removable devices.

### 4.4 [Security] Menu

Change Supervisor Password

Change User Password

Clear User Password



### 4.5[Exit]Menu

Save Changes and Exit

Discard Changes and Exit

Load Optimal Defaults

## 5. Installation of driver program

The laptop computer doesn't support Windows 98SE/Vista.  
The CD-ROM only supports Windows 2000 and Windows XP.  
Open the disc attached, illustrated as follows:



Chipset: driver program for chipset of the computer;  
Video: driver program for VGA card;  
Audio: driver program for sound card;  
Wifi: driver program for wireless network card;  
Click the corresponding icons and finish the installation according to the prompt.

## 6. Fault analysis and elimination

In this chapter, you will learn how to solve general problems on hardware and software. Your laptop computers must pass a complete test and conform to the system specification before being delivered. However, incorrect operation or negligence during the conveyance process will lead to the occurrence of problems. This chapter will provide reference and identification information for general problems on hardware and software you may encounter. In case of any problem, you can firstly try to eliminate it according to the description in this chapter. If the cases of error continue to emerge, consult your distributors for service information.

### 6.1 Problems on sound

#### Without sound

- ◇ Please double-click the icon of loudspeaker at the right lower corner of the task column and check whether the volume of loudspeaker has been shut off.
- ◇ Press Fn+F9 in order to increase the volume.
- ◇ Most of the problems on sound are related to software. If your laptop computer has a normal sound previously, the reason may be that the software setup is incorrect.

#### Unable to record

Please double-click the icon of loudspeaker at the right lower corner of the task column and check whether the volume of loudspeaker has been shut off.

1. Press the Option and select Property.
2. Select Recording and press the Enter button.
3. After the Enter button is pressed, the control console for recording volume will pop out.

### 6.2 Problems on HD

#### HD is unable to run normally or unable to be recognized

- ◇ If you just upgraded the HD, please confirm that the interface of HD is not loosened and the installation of HD is fully correct. You can pull off the joint, firmly re-insert it for one time and then restart the computer.
- ◇ The new HD need partitioning and re-formatting. The operating system and driver program also need to be re-installed.
- ◇ Please examine the indicator lamp of HD. When you access documents, the HD light will flash periodically.
- ◇ The new HD may be broken.
- ◇ If your laptop computer was once encountered with electrostatics or bumped, you may have destroyed the HD.

#### Too slow execution speed of HD

- ◇ If your HD has been used for a long time, excessive and unordered documents will result in a lot of disc fragments. Please follow the process, i.e. start—program—accessory—system tool—program for arrangement of disc fragment, to execute the disc arrangement. This process may take some time.

- ◇ Your HD has been infected with virus.

#### Document damaged

- ◇ Please execute the surface scan in the disc scanning program for disc examination. Double-click My Computer. Right click C: select Property, single-click Starting Checkup in the fault finding status of the Tool label to execute the disc scanning program.

### 6.3 Problems on monitor

#### Black screen in case of system booting

- ◇ Please make sure that the laptop computer is not in hibernation or standby mode. Under these modes, the monitor will be shut off so as to conserve energy sources.
  - ◇ Press the functional key so as to increase the brightness of screen.
  - ◇ Press the functional key to determine that the laptop computer is not in the mode of only CRT output.
  - ◇ The screen is not easy to read.
  - ◇ Please press the functional key so as to increase the brightness of screen.
  - ◇ The resolution of monitor should be set as 1024x768 so as to acquire the optimum display result.
1. Please enter Start—Setup—Control panel and double-click the icon of Display.
  2. In the page of Setup, the resolution is set as 1024x768.

#### Screen flashing

When your start or shut the computer, the screen will flash for several times. This is a normal phenomenon.

#### Damaged point of screen

Due to the restriction of LCD manufacturing process, some image points cannot normally display a certain colors on LCD (i.e. the generally-called damaged point). This is normal phenomenon. You can feel assured. For details, please refer to GB/T9813-2000.

The relevant contents on the national standards are as follows.

Inspection shall be conducted under the following conditions:

- ◇ Ambient temperature: 20°C~25°C
- ◇ Light: 300 lx~700 lx
- ◇ Distance for visual observation: 35cm
- ◇ Angle for visual observation: the visual line and the screen surface form 90 degrees.

### 6.4 Problems on EMS memory

After you install more EMS memories, the added memory capacity is not displayed when the self-testing is conducted for POST booting.

- ◇ The installation of memory module may be incorrect.
- ◇ The memory module is broken.
- ◇ Your system may be incompatible with some memory modules.

During the operation, the operating system gives out an error information on insufficient memory.

- ◇ This problem usually results from software or Windows.
- ◇ Please shut off unused application program software and re-start the computer.
- ◇ Otherwise, you must install more memory modules.

### Special Declaration

This laptop computer can support several peripheral devices & hardware, such as mouse, keyboard, printer and scanner. As for the peripheral equipment accompanied with the computer, the company doesn't guarantee the compatibility and reliability of its products. When users use the products, they must conform to the contents in the specifications. If consumers purchase the peripheral equipment from third parties, which will be connected to the laptop computer, please conform to the equipment specifications, correctly connecting the peripheral equipment and computer, and installing corresponding driver programs under the operating system supporting the equipment. As there are a lot of peripheral equipment manufacturers on the market, in order to guarantee the benefits of consumers, we recommend consumers to purchase quality-guaranteed products from famous manufacturers. In case that the third-party peripheral equipment are incompatible to the laptop computer, consumers should contact the third-party manufacturers.

As for software presented with the laptop computer (all the pre-installed software are presented software with the computer; they are free of charge for users), the company can guarantee the functionality and compatibility of its software. Users should refer to the user's guide for correctly using the software. Additionally, there are all kinds of software on the market, except for the special requirement by the software, most genuine software can run normally on the laptop computer. In order to guarantee the consumers' benefits, users are advised to purchase genuine software from official channels. As for any third-party software independently purchased and installed by users, users should follow the specifications for correct operation. In case that the third-party software is incompatible to the laptop computer, consumers should contact the third-party manufacturers.

It's recommended that before users purchase hardware or software from third parties, they can only purchase after the third-party manufacturers or distributors pass relevant tests in order to guarantee their interests. As for problems on third-party hardware or software, the company cannot guarantee customers' requirement for goods returning and changing. The company can supply technical support.

## Annex A product specifications

VIA® latest mobile computation technology adopted

### CPU

VIA C7-M 1600MHz

### Chipset

VIA Vx700

### System memory

DDRII SO-DIMM socket, which can be expanded to 2048MB to the maximum extent.

### Displaying memory

Dynamic DDR distribution technology: when the system memory is 512M, the maximum DDR is 64M. when the system memory exceeds 1024M, the maximum DDR is 128M.

### Screen

10.2"(wide-screen)TFT color LCD with 1024×600 WXGA of resolution.

### Display controller

VX700 integration, UniChrome ProII.

### keyboard

85 keyboard

### Touch pad

Touch pad with 2 buttons

### Storage device

Card reader module (SD/MS/MMC/MS-pro)

### HD

2.5" ,height 9.5mm,SATA interface, supporting 80GB/160GB/200GB/250GB HDD

### Sound effect

Two ports of sound effect: one is the microphone socket and the other is the socket for sound effect output, supporting AC'97.

### I/O interface;

1 microphone socket;

1 earphone socket;

2 USB2.0 interfaces;

1 interface for external monitor;

1 socket for network line (RJ-45);

1 card reader (SD/MS/MMC/MS-pro);

1 DC-IN socket

### LAN

10/100Base-TX.

### Wireless network

802.11AGB

### Power

Power adaptor:Input: 100-240V ~ 50-60 Hz 1.7A Output: 19V 3.5A.

### Battery

As for the smart lithium battery, it can endure around 160 minutes after it's 100% charged. The actual duration period will depend on the battery condition and actuality.

Specifications on battery:

The duration of battery may be influenced by the following factors: times of charging and discharging, operating system, brightness setup of LCD, application programs (especially video playing, such as playing DVD etc), setup and functions used of power management(such as starting wireless function etc). The battery lifespan of the laptop computer is limited. The efficiency and duration of battery will decrease with the increase of usage times. This kind of normal battery exhaustion is a normal phenomenon.

### Dimension

About 251mm(W)×185mm(D)×34mm(H) 。

### Weight

Around 1.2 kilograms (including battery)

Note: The weight indicated is only the basic system weight and weight value is only supplied for reference. The actual weight will vary with different configuration and materials.

Note: As the specifications and configuration of the laptop computer are being updated quickly, there shall be no prior notice if there is any change on the product specifications. The configuration of computer purchased by users shall be the final result.

## 敬告

尊敬的用户：

感谢您购买和使用我司的产品。为了您的安全和利益，在使用产品前请您仔细阅读本产品说明书及随机附带的全部资料。如果您未按照产品说明书操作和使用产品，而导致任何的人身伤害、财产或其他损失，我司将不承担责任。

关于本产品说明书（以下简称“说明书”）

- 说明书版权属于我司所有；
- 说明书提及的商标、字号属于它们各自的权利拥有者；
- 说明书内容如同实际产品不一致，以实际产品为准。

如果您对说明书的任何内容或条款存在不明或异议，请在购机后七日内向我司提出书面异议，否则视为您已经同意、理解并接受说明书全部内容。

## 目录

<b>1 注意事项</b>	
1.1 特别提示	2
1.2 笔记本使用重要提示请务必阅读	2
1.3 注意事项	3
1.4 笔记本电脑电池使用须知请务必阅读	4
1.5 安全须知	7
<b>2 产品概述</b>	
2.1 简介	9
2.2 部件介绍	9
2.3 开箱和检查	11
<b>3 基本使用常识</b>	
3.1 系统状态指示灯	12
3.2 将电脑停止	12
3.3 键盘功能	13
3.4 触控板	13
3.5 显示屏	14
3.6 网卡	14
<b>4 BIOS(基本输入输出系统)设定</b>	
4.1 使用BIOS Setup 的方法	15
4.2 Main (主要设定)	15
4.3 Boot (开机画面及开机设备次序设定)	16
4.4 Security (密码保护设定)	16
4.5 Exit (结束设定)	17
<b>5 驱动程序安装与使用说明</b>	
5.1 安装驱动程序	18
<b>6 故障分析与处理</b>	
6.1 声音的问题	19
6.2 硬盘的问题	19
6.3 显示器的问题	20
6.4 内存的问题	20
<b>特别声明</b>	21
<b>附录A 产品规格</b>	22



# 1 注意事项

## 1.1 特别提示

为了便于理解和引起您的注意，当涉及产品安全或需关注的信息时我们将在本章节或在后面的章节中按下列等级和特别的警示用语向您提示，这些特别的警示用语表示方法如下：

- 【危险】--表示对高度危险要警惕
- 【警告】--表示对中度危险要警惕
- 【注意】--表示对轻度危险要关注
- 【禁止】--表示危险的操作需禁止
- 【提醒】--表示安全或其他内容需关注

本章节中为您提供的安全信息并不是全部的，为了您的安全和利益，我们会根据需要部分产品安全信息编排到说明书的后面章节中，不论这些安全信息置于何处，您均应仔细阅读。

同样，除了以特别的警示用语提出的注意事项外，对于说明书中的其他内容和介绍，您亦应予以同样的重视。

## 1.2 笔记本使用重要提示请务必阅读

笔记本电脑属于高科技精密产品，请您务必仔细阅读下面使用提示。

### 1. LCD显示屏保养：

✎ 不要在笔记本上放任何重物。

✎ 使用手提箱或背包时，请确保您没有在包内装太多东西，并且没有在笔记本包和LCD背部增加额外的压力。

✎ 不要抓、扭或撞击LCD屏幕表面。

✎ 不要将LCD屏幕置于温度超过40摄氏度或湿度大于90%的环境中。

✎ 不要让LCD屏幕暴露在直射的阳光或很强的荧光下。

✎ 不要在LCD屏与键盘之间放置任何东西，例如：铅笔、文件等，这会损坏或刮伤LCD屏。请勿使用有腐蚀性的清洁剂擦拭LCD屏，这会损伤屏幕。

2. 为防止电脑过热，请在电脑工作中确保不要阻塞散热通风孔。

3. 在系统正在访问软驱、光驱、移动存储等介质时，请勿移出介质，否则可能会导致系统崩溃或数据损坏。

4. 请不要在系统工作时拆开机壳，这会导致数据丢失或损坏。格式化硬盘会删除硬盘上的所有数据，请提前备份。重要数据请您务必及时备份在其他存储介质中，由此引起的数据丢失本公司将不承担责任。

5. 为保证您和机器的安全，请在使用外接电源供电时，保证电源已经正确接地。如果不准备长时间使用电脑，请将电源插头拔下，以避免短暂电压过量造成系统损坏。所处之地的电源供应需稳定且不受干扰。若您不清楚当地电器规格，请与您的经销商或所当地当地的电力公司洽询。基于安全考虑，电源插头的接地线，请勿随意破坏。拔电源时，避免直接用拉扯的方式将电线拔出，务必从插头处拔起，以确保安全。清洁电脑前，切记务必先拔掉电源插头并取下电池。请勿拆开电源适配器。

6. 请勿使用非本笔记本电脑所带的电源适配器，这样会导致电脑的损坏。

7. 请勿单手取放笔记本电脑或使您的笔记本电脑处于不平衡状态。

8. 本产品只能由代理公司授权服务人员进行拆装，请您保证封条完整，否则可能会影响您享受保修或“三包”服务。

9. 如果您设置了密码，请千万不要忘记，否则可能导致不能开机。如果忘记了密码，请与供应商或授权维修站联系，但这可能会损坏您的所有数据。

10. 当手动弹出光驱时，请勿使用铅笔等易折断的物品，以免堵住紧急弹出孔。

## 1.3 注意事项

### 适用群体

#### 【注意】

使用电脑，应具有一定的电脑基本常识。同时，电脑不适用于儿童单独操作。如果有需要，必须有成人看护。

### 工作环境

#### 【危险】

为避免出现意外故障，电脑应在下述限定环境范围内工作：

内 容	适 应 范 围	备 注
贮存运输温度	-40° C 至50° C	
贮存运输相对湿度	20% - 93% (40° C)	
大气压	86 kPa - 106 kPa	
电源适应能力	220V ±22V, 50Hz ±1Hz	
工作湿度	35% - 80%	
工作温度	10° C - 35° C	

#### 【警告】

为避免电脑受到环境（潮湿、灰尘、食品、液体、直接暴露于阳光下等）的侵害，应放置在通风、干燥的地方。

为避免磁场干扰和损坏，请远离其他家电（如电视、空调等）。

请不要将液体或其他杂物溅入电脑，否则有可能会引起其内部元件的短路进而引起触电或火灾。

#### 【注意】

电脑在低温条件未恢复的情况下通电开机，可能会给电脑造成无法修复的故障，所以使用前请先保证电脑在室温（10摄氏度以上）条件下恢复2小时以上的时间。

## 使用前

#### 【警告】

电脑在低于10° C的环境储运后，使用前请在室温10° C — 35° C条件下放置2小时以上的时间，避免电脑温度过低而发生加电损坏。在此期间不要拆除包装，让电脑自然恢复温度，避免升温过快而发生加电损坏。

#### 【注意】

使用前，还需确认电脑的连接、电源使用及其他事项均符合说明书的要求。

## 移动、运输、贮存

#### 【注意】

移动电脑时，注意轻拿轻放。

运输时应放在原包装箱内，遵照包装储运图示标志指示堆放，并使用封闭式货箱搬运。

贮存时包装材料应安全地存放于儿童拿不到的地方，以避免不安全情况发生。

依照国家标准(GB/T9813-2000)，《微型计算机通用规范》中的相关解释，电脑温度在低于10° 兹时)环境储运后，使用前请在室温(10-35摄氏度)条件下放置2小时以上的时间，避免因电脑温度过低加电产生损坏。在此期间请不要拆除包装，让电脑自然恢复温度，避免因升温过快导致电脑产生结霜和凝露带来的加电损坏的发生。

## 电池

#### 【注意】

不正确的更换电脑的锂电池可能会引起爆炸危险，请务必在专业维修人员指导下进行锂电池的安装和更换；只允许使用制造厂推荐的同类或等效类型的替换电池产品；电池的不当丢弃会引起环境的严重污染，请您务必妥善处理用完的电池或者将废弃电池交还华恒悦公司售后维修部门处理，避免环境污染。

## 1.4笔记本电脑电池使用须知请务必阅读

请遵循以下规则，善加使用您的电池。

### 新买的电池：

新电池需要先使用过以后，将电量耗尽，才能做充电的动作。

### 电池寿命：

不适当的使用和维护可能会缩短电池寿命。为了增进电池寿命和电池的功能，每隔30天就要完全将电池彻底放电并重新充电到饱和。

### 电池计量器：

电池内有内建一个计量器，可以计算电池电力。电池计量器依靠电池的[记忆] (memory) 来决定停止充放电的程度。但是如果您经常做[不完全]的充电或[不完全]的放电，电池的[记忆]会乱掉。

为了增进电池计量器的准确度，您必须每隔30天或在20次的[不完全]放电之后，至少做一次将电池完全放电并再充电充到饱的动作。

由于电池本身特性，在使用过程中电量会逐渐降低，使用时间会缩短，在电池保修期内可能出现电池无法充满到100%的现象，但不影响正常使用，此为正常现象。

### 节省电池电力：

#### A高级电源管理：

您的笔记本电脑有高级电源管理的功能，可以减缓处理器和周边零件的速度。使用这些功能将有助于节省电池的电力。

#### B 液晶显示器的亮度：

液晶显示器会消耗非常多的电力，因此如果将亮度调低，将可以节省电源。

C 软件和外设：对于不同的软件和外设，即使这些并非是使用中的程序或设备，却也会消耗电力。若要节省电池能源，我们建议如下：

- 如果并没有使用Modem或其它的通讯程序，就将这些程序关闭。
  - 将没有使用的PC卡从电脑插槽中取出。
- 因为即使在暂停模式下，PC卡也会迅速地消耗电池的电力。
- 从电脑插座上拔掉不必要的外设。

### Q & A:

#### 如何将电池完全放电？

让电脑使用电池的电力工作，直到电脑因电力太低而自动关机。即使在这当中您看到电脑屏幕上出现电力太低的信息或听到警告电力太低的哔哔声，也绝对不可以自己动手关掉电脑，要让电脑持续开机的状态直到它用尽所有的电池电力而自动关机。

#### 如何完全充电？

电池充电时，一般要等到电脑上的电池显示灯显示已充电完毕，才算充饱，具体情况请参考本手册的电源状态指示灯。

#### 如何维护电池？

至少每隔30天或每隔20次的[不完全]放电之后，就要做一次完全放电和充电的动作。

**特别注意：**

本电池只能用于本笔记本电脑。

如果更换不适当的电池种类可能会有爆炸的危险。只可使用相同型号的原厂电池或经原厂推荐认可同等级的电池种类进行替换。

请勿拆解电池。

请勿将电池暴露于火焰或水中。

为了防止火灾、燃烧或电池的损坏，请勿让电池的两极处碰到金属物品。

处理损坏或漏液的电池时请特别小心。如果您不小心触碰到电池液，请赶快用肥皂及水冲洗。如果接触到眼睛，请用水冲洗眼睛15分钟，并尽快去医院治疗。

如果环境温度较高，请勿充电。

存放时，请勿将电池暴露于高温下。

**电源**

**【危险】**

您需使用合格的三芯带接地保护的接地电源插头和插座，电源插头最终应插在接地良好的电源上，良好的接地是您的电脑正常工作的重要保证。如果您擅自更换标准电源线，可能会带来严重后果，同时电源线最大长度不应超过4.5米。

在您使用电源前应按电源插头和插座的说明确认电源符合电脑使用要求，合格的电源和良好的接地是电脑正常工作的重要保证。否则，可能会带来严重后果。

**【危险】**

雷雨期间，使用产品可能会对电脑甚至您的人身及其它财产安全造成损害。故在雷雨天气，不要使用电脑，并断开电话线、网络线、电源线等可能会与外界连接的导体。打雷时，不要插拔这些线缆。

**【警告】**

不要试图把110V的电源线插在220V的电源上，也不要改动机器电源的电压选择开关。任何改动都可能会造成人身伤害或引起设备损坏。

**【注意】**

仔细检查随机提供的交流电源线。如果出现问题，请与相关销售商联系。

用于微机的电源线必须符合以下安全规范：

- 符合CCC认证
- 电源插头最终应插在接地良好的电源上
- 电源插头必须符合GB 1002-1996、GB2099.1-1996

**人机工程学**

**【提醒】**

当在电脑上工作或游戏时，请调整您的环境并安排好您的电脑设备，使身体处于舒适、灵活的状态。下面的建议可以帮助您获得一个更舒适的环境。

1. 支持您的后背：

选择一把支持后背上部的椅子。

调整工作面高度和椅子，使之呈现出一个舒适自然的姿态。

2. 促成舒适的腿部姿态：

清除桌子下面的物品让腿的位置和移动更舒适。

如果您的脚不能在地板上舒适地休息，请用一个脚凳。

3. 减少颈部的弯曲和扭转：

把LCD显示屏摆在您前部中间。如果您查看文档比显示屏更频繁，请考虑把文档直接放在您前面，并且显示屏稍微靠边一点。

考虑使用文档架，把文档放在接近眼睛的水平。

把屏幕顶部放在接近眼睛的水平。散光患者可能需要把屏幕放低一点，或与合格的健康专家商讨关于适合电脑工作的眼镜。

4. 减少眼睛疲劳：

把显示屏放置在手臂长的距离，舒适地坐在显示屏前。

避免眩光。显示屏放置应远离产生眩光的光源，或使用窗帘控制光线强度。

请记住要清洁屏幕；如果您戴眼镜也要清洁眼镜。

请将显示屏的亮度、对比度和字体大小调节为您感觉舒适的状态。

在操作键盘和触控板的时候，请您轻轻触键，保持手和手指放松，用较小的劲来敲击键盘。

单击触控板或使用游戏杆或其他游戏控制器时，也要用较小的劲来触键。

打字时避免把手掌或手腕放在大角度的物体表面上休息，如果需要，在打字间歇时休息一下手掌。

不打字时，放松手臂和手。不要在物体的边缘上休息，如桌子边缘。

调整您的椅子，不让座位挤压膝盖的后面。

**1.5 安全须知**

1. 电源插座孔应该安装在靠近设备旁边或是可以容易操作的地方，拔插电源线时，避免直接用拉扯的方式将电线拔出，务必从插头处拔起，以确保安全，谨防触电。请勿拆开电源适配器。

2. 请勿将本产品放置于靠近水的地方。

3. 安装时请将本产品置于稳定的支撑物上。本产品可能因为放置不稳定而掉落，造成严重的损害。

4. 请勿将本产品的电线放在人来人往的地方，以免踩坏电线。请勿在电线上置放任何物品。

5. 遵循所有的警告信息和产品上面的标示。

6. 如果不打算长时间使用本产品，请将电源插头拔下以避免短暂的电压过量造成损坏。

## 2 产品概述

### 2.1 简介

产品名称：笔记本电脑

系列及型号：V2机型

产品性能特点：

采用VIA最新移动计算技术

本笔记本电脑采用VIA最新移动计算技术，性能更卓越。

### 系统扩展性

系统允许内存及硬盘的容量升级替代，在进行容量扩充的替代品更换时请咨询当地经销商或前往指定的维修部门进行操作。

### 清晰的液晶显示屏

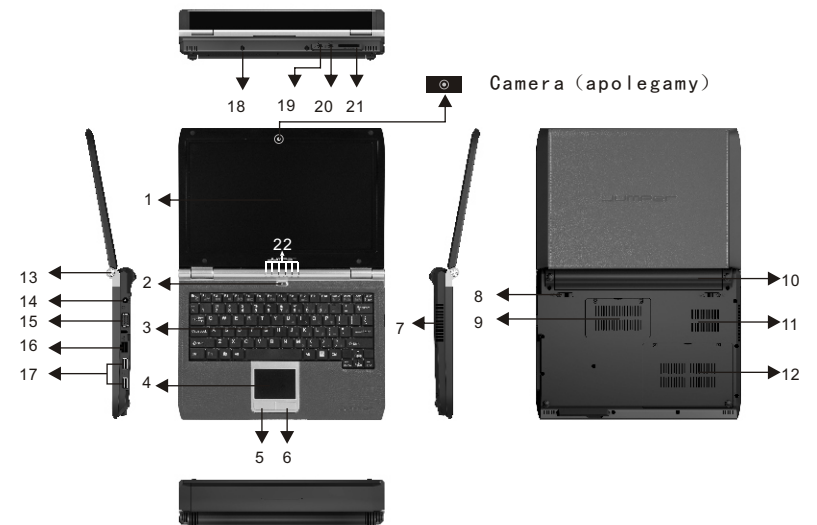
该笔记本电脑拥有LED背光的液晶显示屏，带给您清晰明亮的彩色文字和图片。

### 通讯特性

该笔记本为局域网准备了内置的802.11AGB无线解决方案。

### 2.2 部件介绍

(注：以下均为示意图，以实物为准)



7. 切勿将任何液体泼洒到本产品上，此动作可能造成起火或电击的危险。
8. 如有下列情况，请交由合格的专业人员来服务：
  - a. 当电源线或插头已损毁或磨损。
  - b. 液体被泼洒到本产品上。
  - c. 本产品曾遭受雨淋或水的泼洒。
  - d. 当您已遵循运作的指示，而本产品仍无法正常运行。
  - e. 如果本产品曾掉落或外壳已损毁。
  - f. 如果本产品已呈现出明显的损毁。
9. 本产品的使用和储存温度请参考附录A 产品规格，不在规定的温度范围内使用和储存，可能会造成产品的永久损坏。
10. 请勿在靠近水或其它液体的地方使用电源适配器。切勿泼洒液体到电源适配器上。

注：此手册的所有图片均为示意图仅供参考，具体以实物为准。

### 1. 显示屏

电脑的数据及图形将显示在这个屏幕上。

### 2. 电源按钮

可开启/关闭电脑。

### 3. 键盘

键盘可用来输入数据。

### 4. 触控板

触控板是一种内置的指针装置，其功能与鼠标类似。

### 5. 鼠标左键

### 6. 鼠标右键

### 7. 风扇格

风扇格是热空气扩散的地方。请勿完全阻塞这个空气流通口。

### 8. 电池锁栓

电池锁栓可以锁住或放开电池组。

### 9. 内存盖

在此下盖中置有DDR动态内存模块。

### 10. 电池组

当未连接外部电源时可为电脑供应电源。

### 11. 风扇格

风扇格是热空气扩散的地方。请勿完全阻塞这个空气流通口。

### 12. 硬盘盖

在此下盖中置有硬盘。

### 13. 转轴

### 14. DC-IN插座

连接电源适配器。

### 15. VGA端口

用来连接外部显示器。

### 16. RJ-45接口

连接网络线。

### 17. USB端口

用来接USB设备。

### 18. 螺丝孔

### 19. 麦克风插孔

外接麦克风。

### 20. 耳机插孔

外接耳机。

### 21. SD卡插槽

SD读卡器

### 22. LED指示灯

灯是否亮代表不同的状态（详见下节）

#### 特别提示

请勿在LCD屏与键盘之间放置任何东西，例如：铅笔、文件等，这会损坏或刮伤LCD屏。请勿使用有腐蚀性的清洁剂擦拭LCD屏，这会损伤屏幕。

为防止电脑过热，请在电脑工作中确保不要阻塞散热通风孔。

本产品只能由被授权的服务人员进行拆装，请您保证封条完整，否则可能会影响您享受保修或“三包”服务。

## 2.3 开箱和检查

请小心拆除包装以取出机器和其它配件，如发现损坏和遗漏，请立即联络经销商。请保存原有的包装材料，以备换货之需。






一般您会有以下部件

1. 笔记本电脑
2. 电源适配器
3. 使用手册
4. 驱动盘
5. 电池
6. 保修卡
7. 合格证



## 3 基本使用常识

### 3.1 系统状态指示灯

LED 图形符号	指示内容
	蓝灯表示系统处于开机状态中。
	闪烁的橙色灯表示电池正在充电。 当系统由电池供应电力时，闪烁的橙色灯表示目前在开机状态下，但电池蓄电量是低的。 绿灯表示电池已被充饱。
	绿灯表示系统正在存取光盘或硬盘。
WLAN	绿灯闪烁表示无线网卡目前是开启中。
	绿灯表示启动了数字键盘。
	绿灯表示启动了英文大写锁定键。

### 3.2 将电脑停止

当您完成工作时，您可以将电脑电源关闭或者让电脑进入等待或休眠模式：

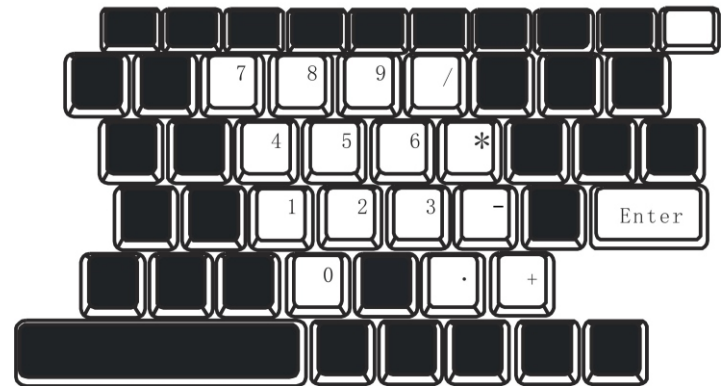
停止的模式	方法	再次开机或使用的方法
直接关闭电源	请遵照操作系统的关机程序。如此可以避免资料的流失或软件的损坏。万一系统因为硬件或软件的问题而死机，则使用电源钮关机。	使用电源钮。
等待 (Standby)	根据您在 Windows 的设置，以下述方式进入待机状态： <ul style="list-style-type: none"> <li>合上电脑上盖</li> <li>使用电源钮</li> </ul>	使用电源钮。
休眠 (Hibernation)	根据您在 Windows 的设置，以下述方式进入休眠状态： <ul style="list-style-type: none"> <li>合上电脑上盖</li> <li>使用电源钮</li> </ul>	使用电源钮。

### 3.3 键盘功能

图示	按键动作	功能
	Fn+Esc	使系统进入休眠模式。
	Fn+F1	关闭无线网卡功能。
	Fn+F2	关闭蓝牙功能（此功能为选配功能）
	Fn+F3	静音。
	Fn+F4	关闭鼠标功能
	Fn+F5	循环切换“只用 LCD”、“只用 CRT 屏幕”及“同时使用 LCD 和 CRT 屏幕”三种图形输出模式。
	Fn+F6	调暗 LCD 的亮度。
	Fn+F7	调亮 LCD 的亮度。
	Fn+F8	调降喇叭音量。
	Fn+F9	调高喇叭音量。
	Fn+F10	关闭显示屏

按下 NumLock 可以启动内键数字键盘，数字显示在按键的右上角，数字键盘包含了加减乘除四则运算的按键。

再按一次 NumLock 就会恢复原来的键盘功能。



### 3.4 触控板

内置的触控板是一个与 PS/2 兼容的定位设备，它的表面可感觉移动。只要用手指在触

控板表面上移动，光标就会跟着移动。

### 3.5 显示屏

为了让您看得舒适，您的笔记本电脑采用的是TFT液晶显示屏。它支持高分辨率和真彩功能。为您带来非凡视觉震撼。

延长显示屏的寿命

遵守下列的准则可以延长显示屏的寿命。

1. 将屏幕亮度设置为舒服观看的最低亮度。
2. 在桌上使用时，请外接一台显示器并关闭笔记本电脑的显示屏。
3. 不要关闭电源管理中进入暂停模式的选项。
4. 如果使用交流电源而且没有外接显示器，请在不使用时切换到暂停模式。

**【注意】**为延长您的电池寿命，在舒适观看的前提下将亮度调到最低，这样内部的光源可以使用较少的电力。

### 3.6 网卡

笔记本电脑有一个内置符合10/100Base-TX标准的以太网卡，将局域网线的一端插入位于您的电脑右边的RJ-45接口，您便可以在此实现网上数据传输了。

打开或关闭无线网络

您的电脑内已经安装了内置的无线网卡，请根据操作系统的提示进行无线网络的设置和加入。（请咨询当地无线网络服务的提供商）您的电脑需要一定的时间进行无线网络连接。

## 4 BIOS(基本输入输出系统)设定

在这一章中,我们会教您如何进入BIOS设定程序及设定各种硬件控制选项，您也将学会如何使用内置的安全防护设定。

[设定公用程序]是内置于笔记本电脑的BIOS（基本输入输出系统）中的硬件状态程序。它可以执行及维护许多的硬件功能。它是一种利用菜单的模式来操作的软件，允许您轻松地设定及变更设定值。

BIOS中含有笔记本电脑的出厂预设值。但是，您仍有机会需要修改BIOS中的预设值。当硬件有变更时，例如升级、临时状况或当您决定要自定硬件设定值以符合特定需求时，您可能就需要启动BIOS设定程序了。

BIOS可以让您设定密码来限制使用者的存取。这是一种重要的功能，因为现在的笔记本电脑中都存放着大量的资料。未经授权的存取是可以预防的。

### 4.1使用BIOS Setup 的方法

您必须执行BIOS设定的情况有：

开机测试发现问题，屏幕上出现信息要求您执行BIOS设定。

您要复原默认值。

您要针对特定硬件来改变设置值。

您要改变设置值以获得最佳系统性能。

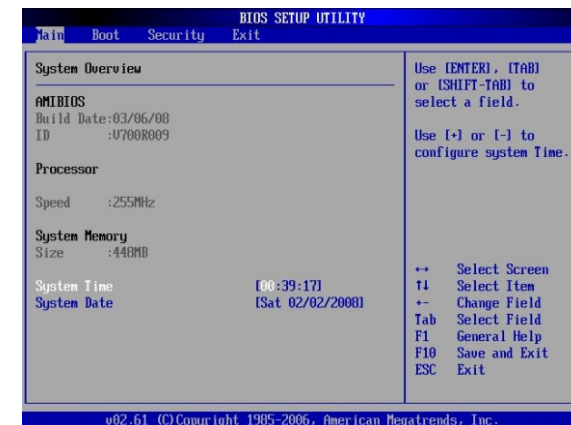
若欲执行 BIOS设定，需在电脑开机时，按下Delete键。

如何进行选择

对于一个项目，您必须通过两层或三层的选项才可完成设置。这些选项大部份都必须通过三层选项：菜单标题、下拉式菜单、及子菜单。

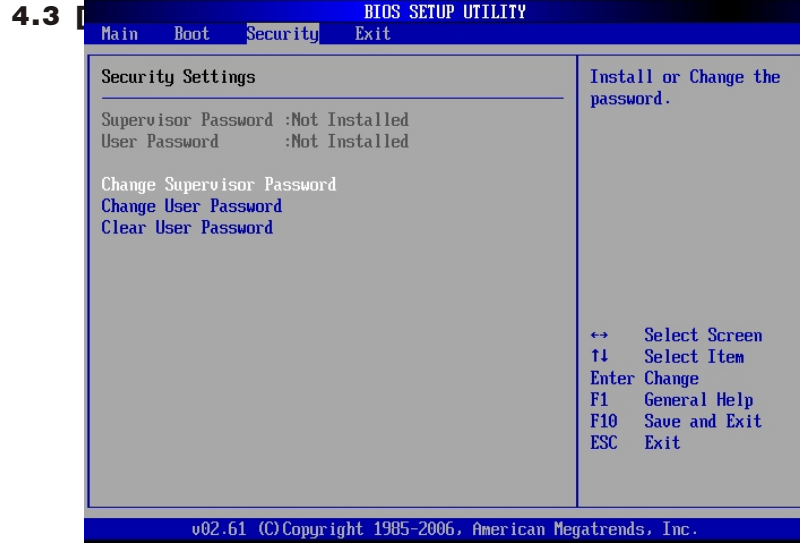
利用键盘来移动并做选择。您可在屏幕右下方看到键盘信息。

### 4.2 Main (主要设定)



System Time: 系统时间设定

System Date: 系统日期设定



Boot Device Priority: 启动设备的优先级设定，主要用于选择启动设备的顺序；

Hard Disk Drives: 硬盘驱动器选择，用于选择启动的硬盘设备顺序；

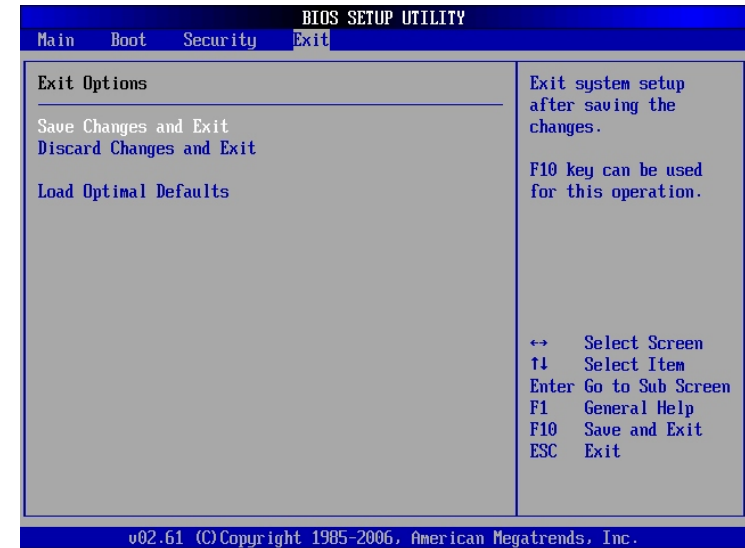
Removable Drives: 可移动设备选择，用于选择可启动的移动设备顺序。

#### 4.4 [Security]菜单

Change Supervisor Password: 设定超级用户密码；

Change User Password: 设定用户密码；

Clear User Password: 清除用户密码。



#### 4.5 [Exit]菜单

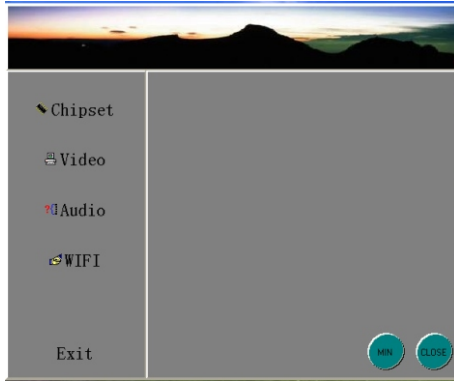
Save Changes and Exit: 存盘退出

Discard Changes and Exit: 不存盘退出

Load Optimal Defaults: 恢复默认设定

## 5 驱动程序安装

本笔记本电脑不支持Windows 98SE/Vista。  
本光盘仅支持 Windows 2000和Windows XP。  
打开随机配带的光盘，如图：



Chipset为本机器的芯片组驱动；

Video为显卡驱动；

Audio为声卡驱动；

Wifi为无线网卡的驱动。

点击相应的图标，然后按照提示安装完成即可。

## 6 故障分析与处理

在本章中，您将学到如何解决一般性的硬件及软件问题。

您的笔记本电脑在出货之前均经过完整的测试，符合系统的规格。但是，不正确的操作或运送过程中的疏失将会导致问题的产生。

本章将针对您可能会遇到的一般性硬件及软件问题提供参考及识别信息。

当您遇到问题时，您可以先试着依照本章的说明来处理。如果错误情形持续出现，再请您向经销商洽询服务信息。

### 6.1 声音的问题

#### 没有声音

- ◇ 请双击任务栏右下角的扬声器图标，看看扬声器的音量是否已经被关掉了。
- ◇ 请按下Fn+F9来提高音量。
- ◇ 大多数的声音问题都与软件有关。如果您的笔记本电脑之前的声音是正常的，可能的原因是，软件的设置不正确。

#### 无法录音

请双击任务栏右下角的扬声器图示，看看麦克风的音量是否已经被关掉了。

1. 按一下「选项」，并选择「属性」。
2. 选择「录音」并按一下「确定」按钮。
3. 在按一下「确定」按钮之后，录音音量控制台会跳出来。

### 6.2 硬盘的问题

#### 硬盘无法正常工作或无法识别

- ◇ 如果您刚刚进行了硬盘的升级，请确定硬盘的接口并未松动，硬盘的置入完全正确。您可以将接头拔掉，再牢牢地重插一遍，然后再重新开机。
- ◇ 新的硬盘需要分区和重新格式化。操作系统和驱动程序也需要重新安装。
- ◇ 请检查硬盘指示灯。当您存取文件时，硬盘灯应会间歇性地闪烁。
- ◇ 新的硬盘可能是坏的。
- ◇ 如果您的笔记本电脑曾经遭受静电或撞击，您可能已损坏了硬盘。

#### 硬盘的执行速度太慢

- ◇ 如果您的硬盘使用已有很长一段时间，过多且杂乱的文件会导致很多磁盘碎片。请到[开始>程序>附件>系统工具>磁盘碎片整理程序]来执行磁盘的整理。这个作业可能要花一点时间。
- ◇ 您的硬盘可能感染了病毒。

### ◇ 文件受损

请执行「磁盘扫描程序」的表面扫描来检查磁盘。双击[我的电脑]，右击C:，选择[属性]，在[工具]标签里的查错状态单击[开始检查]执行磁盘扫描程序。

## 6.3 显示器的问题

### 当系统开机时，黑屏

◇ 请确定笔记本电脑并非处于「休眠」或「等待」模式。在这些模式之下，显示器会被关闭以节省能源。

- ◇ 请按下功能键以增加屏幕的亮度。
- ◇ 请按下功能键来确定笔记本电脑并非处于仅CRT输出模式。
- ◇ 屏幕不易阅读
- ◇ 请按下功能键以增加屏幕的亮度。
- ◇ 显示器的分辨率应设为1024x768，以获得最佳的显示效果
  1. 请到[开始>设置>控制面板]中并双击「显示」图标。
  2. 在「设置」页面中，将分辨率设定为1024x768。

### 屏幕闪烁

当您开机或关机时看到屏幕闪烁数次，这是正常的现象。

### 屏幕坏点

由于LCD制造工艺的限制，LCD上通常会有一些像点不能正常显示某些颜色（通常所说的坏点），这属于正常现象，请放心使用。详情请参考中国国家标准GB/T9813-2000。

以下为国家标准相关内容

在下述条件下进行检验：

- ◇ 环境温度：20℃~25℃
- ◇ 灯光：300 lx~700 lx
- ◇ 目测距离：35cm
- ◇ 目测角度：视线与屏幕表面成90度

## 6.4 内存的问题

当您安装了更多的内存之后，POST开机自我测试时并未显示出增加的内存容量

- ◇ 内存条的安装可能不正确。
- ◇ 内存条坏了。
- ◇ 您的系统可能与某些内存条不兼容。

操作系统在作业中发出了内存不足的错误讯息

- ◇ 这通常是软件或Windows相关的问题。

## 特别声明

本笔记本电脑可以支持多种外围设备硬件，如鼠标，键盘，打印机，扫描仪。随机附送的外围设备本公司保证其产品的兼容性和可靠性，使用者使用时请按照产品所附使用说明书的内容正确使用。如果消费者购买第三方的外围设备与本笔记本电脑连接使用，请遵照该设备的说明书正确连接外围设备和电脑，并在支持该设备的操作系统下安装相应的驱动程序。由于市场上外围设备厂家较多，为保证消费者的利益，本公司建议消费者购买知名厂家，质量有保证的产品。如出现第三方外围设备与笔记本电脑的兼容性问题，请消费者与第三方厂家取得联系。

对本笔记本随机赠送的软件（所有随机安装的软件均为随机赠送软件，对于用户是免费提供的），本公司保证其软件的功能性和兼容性。请用户参考随机使用手册正确使用软件。此外现在市场上有各种各样的软件，除非软件有特殊要求，大多数正版软件都能够在本笔记本上正常运行。为保证消费者的利益，请用户从正规渠道购买正版软件。对于用户自行购买安装的第三方软件，请用户遵照软件附带的使用说明正确操作。如出现第三方软件与本笔记本电脑的兼容性问题，请消费者与第三方厂家取得联系。

建议用户购买第三方的硬件产品或软件前，可以找到第三方厂家或经销商测试通过后再购买，以保障您的权益。本公司不保证因第三方的硬件产品或软件问题给予客户进行退换货。本公司可以提供技术支持。



## 附录A 产品规格

采用威盛®最新移动计算技术

### CPU

VIA C7-M 1600MHz

### 芯片组

VIA Vx700

### 系统内存

DDRII SO-DIMM 插槽，最大可扩充至 1024 MB。

### 显示内存

动态显存分配技术:系统内存为512M时，显存最大为64M.系统内存大于1024M时，显存最大为128M。

### 屏幕

10.2"(宽屏)TFT 彩色液晶显示屏，分辨率达 1024×600 WXGA。

### 显示控制器

VX700集成，UniChrome Proll。

### 键盘

85键键盘。

### 触控板

具备2个按钮的触控板。

### 储存装置

读卡器模块（SD/MS/MMC/MS-pro）。

### 硬盘

2.5"、高 9.5mm、SATA 接口、支持80GB/160GB/200GB/250GB HDD。

### 音效

两个音效端口，一个是麦克风插口、一个是音效输出插口，支持AC'97。

### I/O 连接口

1个麦克风插孔；

1个耳机插孔；

2个USB2.0接口；

1个外接显示器接口；

1个网络线(RJ-45)插孔；

1个读卡器（SD/MS/MMC/MS-pro）；

1个DC-IN插座。

### 局域网

10/100Base-TX。

### 无线网络

802.11AGB

### 电源

电源适配器:Input: 100-240V ~ 50-60 Hz 1.7A    Output: 19V 3.5A。

### 电池

智能锂离子电池，100%充电后的使用时间约为160分钟左右。实际使用时间视电池状况和具体情况而定。

电池说明：

电池工作时间可能受以下因素的影响：电池充放电次数、操作系统、液晶显示屏的亮度设置、应用程序（特别是视频播放，如播放DVD等）、电源管理的设置和所用功能（如开启无线功能等）。一般笔记本电脑的电池使用寿命是有限的,电池的效能和使用时间会随着使用次数的增加而有所降低,这种正常的电池损耗属于正常现象。

### 尺寸

约251mm(W)×185mm(D)×34mm(H)。

### 重量

约1.2公斤（含电池）

注：所示重量仅为基本系统重量，重量值仅供您参考，实际重量会因配置/材质不同发生变化。

**注意：**因笔记本产品规格配置更新较快，产品规格如有变动恕不另行通知，以用户购买的机器配置为准。