

# CONTENTS

<b>About this manual</b>	<b>1</b>
<b>Safety Instructions</b>	<b>1</b>
<b>Player illustration</b>	<b>3</b>
<b>LCD display</b>	<b>4</b>
<b>Features</b>	<b>4</b>
<b>WIN98 User</b>	<b>4</b>
<b>Upload and download</b>	<b>7</b>
<b>HOLD</b>	<b>8</b>
<b>Switching the player on and off</b>	<b>8</b>
<b>Navigating in the main menu and submenus</b>	<b>9</b>
<b>Main menu</b>	<b>9</b>
<b>A-B repeat</b>	<b>11</b>
<b>Lyrics show in step</b>	<b>11</b>
<b>EQ</b>	<b>13</b>
<b>Play Mode</b>	<b>13</b>
<b>Contrast</b>	<b>14</b>
<b>Backlight</b>	<b>14</b>
<b>Power Savings</b>	<b>15</b>
<b>REC Bitrate</b>	<b>15</b>
<b>Language</b>	<b>16</b>
<b>Accessory</b>	<b>18</b>
<b>Specifications</b>	<b>19</b>

## About this manual

Dear customer,  
Thank you for choosing our product.  
Please read through these instructions carefully.  
Please pay particular attention to the following safety instructions.  
These instructions are part of this product.  
Please retain these instructions for future reference.

## Safety Instructions

Electrical devices are not for children. Never allow children to use electrical devices unsupervised.  
Batteries can be extremely dangerous if swallowed. Therefore keep this device and batteries out of reach of small children.  
If a battery is swallowed, seek medical help immediately.



### Carrying strap

To avoid danger of suffocation, do not put the carrying strap around a child's neck.



### Proper recycling

Batteries and packaging material should not be disposed in domestic waste.  
Batteries must be handed in to a used-battery collection point.  
Separated disposal of packaging material cares for the

environment.



#### Dampness and Cleaning

This product is not waterproof! Do not submerge the player in water or let it come in contact with water. If water penetrates the player, it can cause serious damage.

Do not use cleaning agents, which contain alcohol, ammonia, benzene or abrasives, as these can damage the player.



#### Heat

Do not expose the device to direct sunlight. Ensure that the device is not exposed to any direct heat sources, such as radiators or open fires. Ensure that the ventilation slots of the device are not covered.



#### Important information for hearing protection

##### Caution:

Your hearing is important to you and us. Therefore please be careful when using this device. We recommend you to:  
Avoid high volumes.

If the device is to be used by children, make sure that it is not set too loud.

##### Attention!

Volumes that are too high can cause irreparable damage to children's hearing.

#### SETTING A SAFE VOLUME LEVEL

If you continually listen to loud music, your hearing gradually

adapts to it and gives you the impression that the volume is lower.

What seems normal to you can actually be damaging.

To protect yourself from this, set the volume to a low level.

Increase the volume slowly, until you can hear clearly and without problems.

Damage to your hearing can be extensive and cannot be reversed.

If you notice a problem with your ears, please consult a doctor.



Do not use the device when in traffic.

Traffic calls for your increased attention.

Wearing headphones and playing music too loud distracts you from the traffic. Surrounding noises cannot be heard.

Accidents can result from lack of attention.

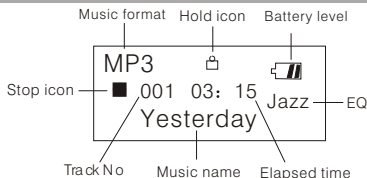
### **Interference with other equipment**

If TV or radio interference occurs during use, place the device in a different location in the room/building.

## **Player illustration**



## LCD display



## Features

- Supports MP3 and WMA .
- Lyrics show in step  
This player supports the LRC files.
- USB disk  
This player needs no driver except for WIN98
- 5 EQ  
Natural, Rock, Classic, Jazz and Pop
- Digital recorder
- A-B repeat
- Line-in record
- Multiple repeat modes  
Normal, Repeat Track, Repeat All, Shuffle and Shuf.Repeat
- Power off automatically  
User can set time to shut down the player automatically
- Full graphic menu  
Graphic menu with relative character, easy to operate
- White words display with black backlight

## WIN98 User

As for WIN98 user, please install the software on the CD provided, before connecting your player. This will install the necessary drivers.

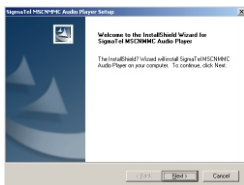
1、 Place the CD-ROM in the CD-ROM drive of your computer. If the CD does not start automatically, open Windows Explorer.

a.) Double click <My Computer> .

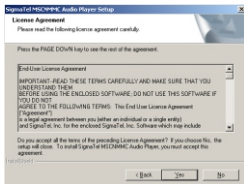
b.) Select the CD-ROM drive, in which the installation CD is inserted and double click to confirm.

c.) Run the **Setup.exe** file on the CD-ROM by double clicking on it.

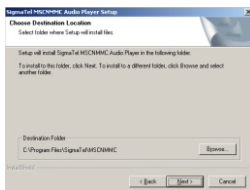
2、 The Setup Wizard guides you through the installation, click on **Next>**.



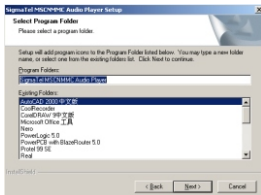
3、 When it appears the following image, click on **Yes** to continue.



4、 Select a drive on which you would like to install the program and click on **Next>**.

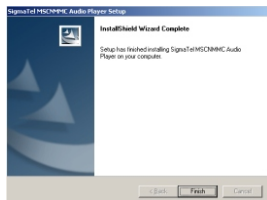


5. Click on **Next>** to start the installation.



6、The program and the device drivers will now be installed onto your computer.

7. After successful installation, close the program by clicking on **finish**.



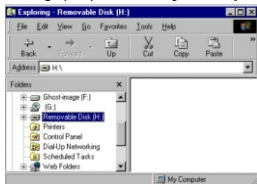
When you connect the player to the USB Port of your PC, the player is automatically detected by the operating system and installed.

## Upload and download

When connects this device to PC, it will enter USB mode and display as the following.



The operating system detects the player as a **USB removable storage device** e.g.(G:) in the **My Computer**.



You can now work with your player as you would with a normal drive, i.e. you can copy, rename or delete files or create folders.

Do not remove the player from your USB port until the copying process is complete.

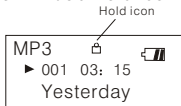
Please do not connect the player to PC when music is playing.

## HOLD

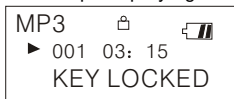
Push the HOLD key to the HOLD position, to lock other keys against accidental pressing.



In this state, there will be a hold icon on the LCD



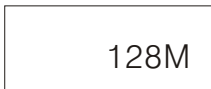
If you press any key when the HOLD key is ON, the player will make no response except displaying as the following:



## Switching the player on and off

Switching on

Press PLAY key to start the player.  
It will appear the total memory first.



Please make sure that the HOLD switch is on the OFF opposite.



If you press PLAY key to start the player when the HOLD switch is ON, the player will show the message “KEY LOCKED” and then shutdown automatically.

### Switching off

Press and hold PLAY key for about 3 seconds to switch to shut down the device. The LCD will remind you the message “Continue Holding To Power Off” .

If there is no operating in the off time set, or the sleep time set elapsed, the player will shut down automatically.







## Navigating in the main menu and submenus

### Main menu

Press MENU key to show the main menu.



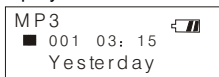
Structure of the main menu:

-  Music: Music mode
-  Voice: Record mode
-  Settings: System setting
-  Erase Files: To delete single file
-  Memory: To display the memory
-  Mp3 Encode: To record music from other device

Press PREVIOUS key or NEXT key to select.  
And press MENU key to enter the menu.

 Music

Select to enter the Music mode from the main menu, the player is ready to play music.



Press PREVIOUS key or NEXT key to select the music you want to play.  
Long press PREVIOUS key or NEXT key to adjust the volume.

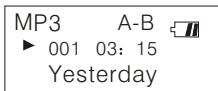
After select the music, press PLAY key to play.

When the music is playing,  
Press PLAY key to stop temporarily, and press PLAY key again to continue.  
Press A-B/REC key to set A-B segment repeat.  
Press MENU key to show main menu.

## A-B repeat

When the music is playing, press A-B/REC key to set A-B segment repeat.

Press A-B key to set the beginning point of the A-B segment.



At this moment, icon “A” is fixed, and icon “-B” starts to flash.

Press A-B key again to set the endpoint of the A-B segment. And icon “A-B” is fixed, the player begins to play the A-B segment.

## Lyrics show in step

This player supports “\*.LRC” file.

Keep the music file and LRC file in the same folder with the same name, then the lyrics will show in step when music is playing.

For example, the name of the music file: Yesterday.mp3,  
The name of the LRC file: Yesterday.lrc



## Voice

Choose the Voice item from the main menu.  
It will show the recording interface.

DVR
■ 001 01:06
V001.WAV

Press Previous or Next key to select the recording file to play.  
Press Play key to start to play the selected file.  
Press A-B/REC key to start to record.  
Press A-B/REC key during recording to stop and save the recording file.  
The recording files are saved in WAV format, named as V\*\*\*.WAV.

User can also press A-B/REC key in music stop state to start to record.



## Settings

Choose to enter settings item from the main menu.  
The submenu of settings details as the following:

EQ
Play Mode
Contrast
Backlight
Power Savings
Rec Bitrate
Language
Exit

## **EQ**

This player has 5 equalizer patterns: Natural, Rock, Jazz, Classic and Pop.

Press MENU key to display the main menu.

Choose to enter the settings submenu.

Select the EQ item from the settings submenu.

Press Previous or Next key to select the EQ mode you like.

Then press Menu key to confirm.

The player will exit automatically if there is no any operation in 10 seconds.

## **Play Mode**

There are altogether 5 repeat modes in Play Mode:

Normal: To play all music in sequence for once and stop.

Repeat Track: To play the select music repeatedly.

Repeat All: To play all music in sequence repeatedly.

Shuffle: To play all music in a random for once and stop.

Shuf.Repeat: To play all music at random repeatedly.

Press MENU key to display the main menu.

Choose to enter the settings submenu.

Select the Play Mode item from the settings submenu.

Press Previous or Next key to select the play mode you like.

Then press MENU key to confirm.

The player will exit automatically if there is no any operation in 10 seconds.

## **Contrast**

This function is to adjust the lightness of the LCD.

Press MENU key to display the main menu.

Choose to enter the settings submenu.

Select the Contrast item from the settings submenu.

Press PREVIOUS and NEXT key to adjust.

Press MENU key to confirm.

The player will exit automatically if there is no any operation in 10 seconds.

## **Backlight**

This function is to adjust the time that the backlight lasts.

There are 4 choices:

Always ON, Disable, 5 secs and 10 secs.

“Always On” means the backlight always on.

“Disable” means the backlight never on.

“5 secs” means backlight will turn off in 5 seconds if there is no operation.

“10 secs” means backlight will turn off in 10 seconds if there is no operation.

Press MENU key to display the main menu.

Choose to enter the settings submenu.

Select the Backlight item from the settings submenu.

Press PREVIOUS and NEXT key to select.

Press MENU key to confirm.

The player will exit automatically if there is no any operation in 10 seconds.

## Power Savings

This function is to set the time to shut down the player automatically, if there is no operation in a certain time.

There are 5 choices:

Disable, 1 min, 2 mins, 5 mins and 10 mins.

“Disable” means never shut down automatically.

“1 min” means the player will shut down automatically in 1 minute if there is no operation.

“2 min” means the player will shut down automatically in 2 minutes if there is no operation.

“5 min” means the player will shut down automatically in 5 minutes if there is no operation.

“10 min” means the player will shut down automatically in 10 minutes if there is no operation.

Press MENU key to display the main menu.

Choose to enter the settings submenu.

Select the Power Savings item from the settings submenu.

Press PREVIOUS and NEXT key to select.

Press MENU key to confirm.

The player will exit automatically if there is no any operation in 10 seconds.

## REC Bitrate

This function is to set the frequency of recording.

There are 4 items: 8000Hz, 16000Hz, 32000 and 48000Hz.

The bigger the frequency is, the better the recording quality will be, but the recording time will be shorter.

Press MENU key to display the main menu.

Choose to enter the settings submenu.

Select the REC Bitrate item from the settings submenu.

Press PREVIOUS and NEXT key to select.  
Press MENU key to confirm.

The player will exit automatically if there is no any operation in 10 seconds.

## **Language**

This function is to select the language to display.

This player supports 2 languages: Chinese and English.

Press MENU key to display the main menu.  
Choose to enter the settings submenu.  
Select the Language item from the settings submenu.  
Press PREVIOUS and NEXT key to select.  
Press MENU key to confirm.

The player will exit automatically if there is no any operation in 10 seconds.



## **Erase files**

This function is to delete files one by one.

Press MENU key to display the main menu.  
Choose to enter the settings submenu.  
Select the Erase files item from the settings submenu.  
Press PREVIOUS and NEXT key to select the file you want to delete.  
Press MENU key to confirm to delete.

The player will exit automatically if there is no any operation in

10 seconds.



## **Memory**

This function is to display the memory of the player.

Press MENU key to display the main menu.

Choose to enter the settings submenu.

Select the Memory item from the settings submenu.

It will display the information of the memory.

INT: 128M  
FREE: 36M

“INT: 128M” means the total memory of the player is 128M.

“FREE: 36M” means there are 36M left.



## **Mp3 Encode**

This function allows you to store the music or song in the name of mp3 music in the player via a connection to the external device, for example, other MP3 player, MD or CD player.

Connect the player to other music device through the line-in cable.



Press MENU key to display the main menu.  
Press PREVIOUS or NEXT key to select MP3 Encode item.  
Press MENU key to start to record.  
Press A-B/REC key to stop recording.  
The recording files are saved in MP3 format, named as M\*\*\*.mp3.  
You can playback the recording files in Music Mode.

## Accessory

Please check that the following accessories have been provided:

- Headphone
- CD
- USB cable
- User Manual
- Carrying strap

## Specifications

Memory	64/128/256MB
Battery	Single AAA battery
LCD	128*32 dots with blue back light
Dimension	92*33*18*mm
S/N radio	90dB
Frequency range	20Hz—20KHz
Sample Frequency of the Recording	8KHz, 16 KHz, 36 KHz, 48 KHz
File type	MP3 / WMA
WMA Bit Rate	32 Kbps - 384 Kbps
MP3 Bit Rate	8 Kbps - 320Kbps