

# CONTENTS

---

▪ What is an MP3 file? .....	1	▪ Setting up EQ Sound .....	25
▪ What is the "MPIO"? .....	1	▪ How to Use FM Radio .....	26
▪ Control Layout .....	2	▪ Troubleshooting .....	27
▪ Connecting to PC.....	4	▪ Safety Precautions .....	29
▪ CD Software Installation .....	5	▪ Customer Service .....	30
▪ Using the "MPIO DESK".....	7	▪ Product Specifications .....	31
▪ Using the "MPIO".....	11	▪ Safety Information .....	32
		▪ Warranty .....	33

# What is an MP3 File?

An MP3 file (MPEG1 Layer 3) is an audio file made by using audio data compression technology.

MP3 applications can be used for various applications. You can make MP3 files of your favorite music, or download songs through the internet or on-line services and store them in your PC or portable MP3 player. Then you can enjoy high quality sound. Furthermore, MP3 files can be used with audio files other than music in a variety of ways such as recording business meetings, studying language programs and listening to internet broadcasts.

ⓘ Distributing copies of MP3 files without permission is a violation of international copyright laws. The encoding software included in the MPIO package should only be used for personal purposes and in accordance with applicable copyright laws.

# What is the "MPIO"?

The MPIO is a next generation digital audio player, which does not require cassette tapes or CDs for operation.

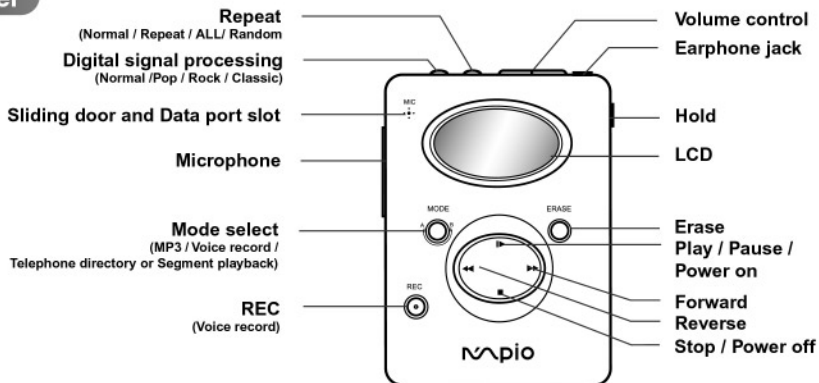
MP3 files which you have purchased can be stored in flash memory or in the Memory Card (memory expansion card) of the player, and played back. Also, the MPIO can be used for such purposes as recording interviews or lectures.

In contrast to portable CD players, the MPIO will not skip during heavy exercise or while being jostled. Even after repeated play backs, there is no degradation or stretching of sound quality.

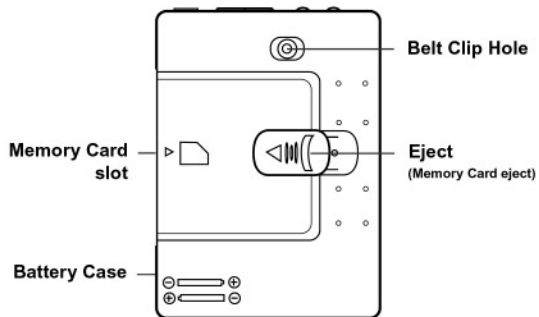
The title, artist, and playing time are all displayed on the liquid crystal display (LCD) for your convenience.

# Control Layout

## Front Panel



## Rear Panel



## Accessories



< MPIO Player >



< Earphone >



< PC Connecting Cable >



< Software Installation CD >



< User's Guide >



< AAA-Type Two Batteries >

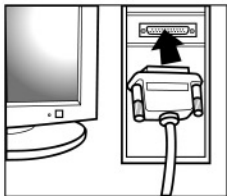
## ● Contents of the MPIO Package

After purchasing the MPIO, make sure that the package includes all of the contents shown below. If anything is missing, inquire to the dealer from whom you bought your MPIO.

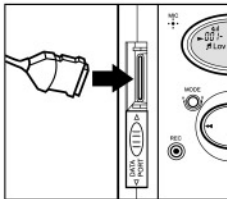
# Connecting to PC

To upload or download files between the **MPIO** and PC, the **MPIO** must be connected to the parallel port of your PC. If there is already a printer cable connected there, you must disconnect it temporarily in order to connect the **MPIO**.

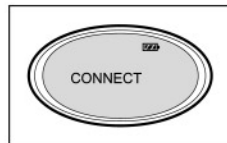
Plug the supplied PC connecting cable to the parallel port of your PC.



Turn on you **MPIO** and plug the connecting cable into the player as well.



The word "CONNECT" will appear on the LCD screen.



## ➤ How to set ECP mode on PC

When booting up your PC, you can change LTP port to ECP mode in BIOS setup;  
If you want detailed information, please read PC manual because it depends on PC.

# CD Software Installation

*To download MP3 onto your MPIO, the software must be installed on your PC as described below. The software CD includes: 'MPIO Desk' to copy files between the MPIO and PC; 'Sample MP3', 'User's Guide' and 'MusicMatch Juke Box'.*

## ● Minimum System Requirements

- Pentium 90MHZ or higher
- 40MB hard disk space
- Windows 95/98/ME/NT/2000
- CD-ROM drive

## ● The MPIO Desk Installation Process

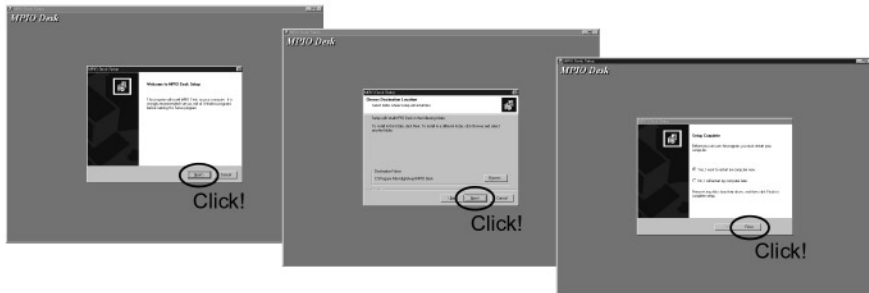


Place the CD into your CD-ROM drive, and the MPIO setup program will start automatically.

If you click "MPIO", the MPIO Desk must be installed.

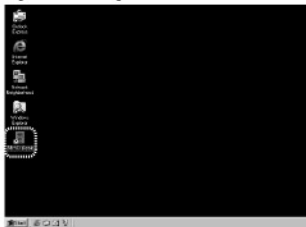
- ➡ If your PC does not meet the system requirements shown above, downloading of MP3 files may be slowed down or impossible to perform.

Click the next button on each successive window.



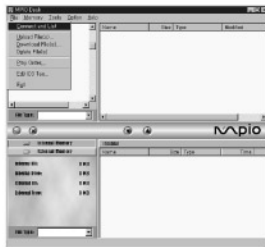
# Using the MPIO DESK

After the **MPIO Desk** is installed, click on the **MPIO Desk** icon on the background screen or click on **[start]→[program]→[MPIO Desk]**



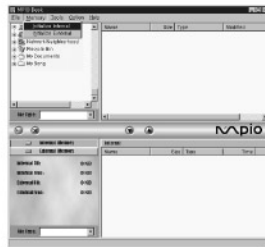
## ● Get MPIO Information

Select **[File]→[Connect and list]** to get the MPIO's information. (Memory File, List, etc)



## ● Initialize

Before copying MP3 files to the built-in memory of the MPIO, the memory should be initialized.




To initialize, select **[Memory]→[Initialize Internal]** or **[Initialize External]** to initialize the desired memory.



## ● Downloading files from PC to the MPIO

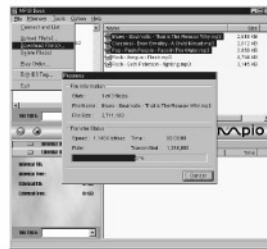
1. Select the desired files, and then...



2. Click download button  or select [File] → [Download file]



3. Progress window...




To copy files from your PC to the MPIO, select the desired memory (Memory Card or built in memory) while in the MPIO Desk program. Then follow these steps:

## ● Uploading files from the MPIO to PC

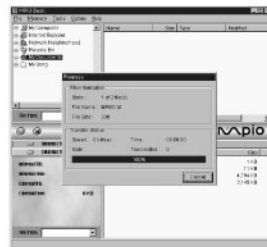
1. Select the desired files, and then....



2. Click upload button  or select [File] → [Upload file]



3. Progress window...



To copy files stored in the built-in memory to your PC.  
(Except MP3 files)

## ● Deleting files



To delete files, select the files to delete.  
Press the Delete button, or select **[File] → [Delete file]**

There is an erase function for files on the MPIO set as well.(See the "Using the MPIO" section)

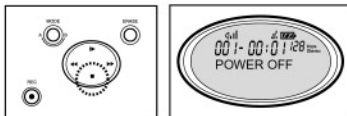
# Using the "MPIO"

## ● Power on / off

1. Press the PLAY button (▶) to turn on the power.  
(Automatically plays back the 1st song stored in built-in memory)

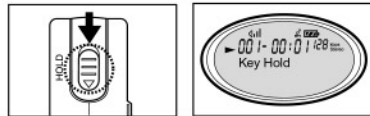


2. To turn the power off, press the STOP button (■) for 2 seconds in the stop mode.



## ● Key Hold

1. Lower the HOLD switch to lock the keys.



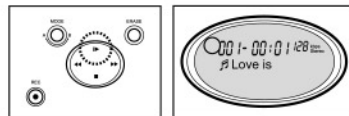
**NOTE** If the MPIO is not used for 3 minutes, it will turn off automatically.

**NOTE** If you press the PLAY button onto the HOLD state, the power will automatically shut off.

## ● Play back of MP3 files

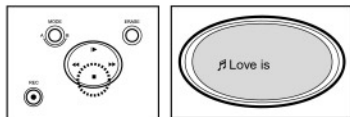
To play back MP3 files, they must be stored in the JNC. (See the "Using the MPIO Desk" section.)

1. Press the MODE button and select the MP3-ALL or MP3-EXTERNAL mode.
2. Press the PLAY button (▶) to play back the current track.
3. Press the PLAY button (▶) again to pause.



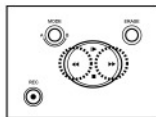
**NOTE** To play back the MP3 files stored in the built-in memory and the Memory Card, select 'MP3-ALL'. To play back the MP3 files stored in the Memory Card only, select 'MP3-EXTERNAL'.

4. Press the STOP button(■) to stop the playback.



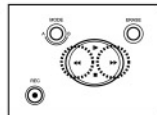
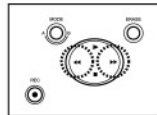
● **Selecting the desired MP3 file**

1. Using the FORWARD or REVERSE button, select the desired MP3 files.



● **Starting playback from the middle of an MP3 file**

1. Using the FORWARD or REVERSE button, select a desired an MP3 file and press the PLAY button.
2. Hold down the FORWARD or REVERSE button until you reach the desired section.

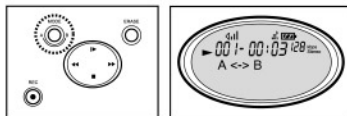
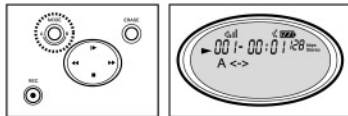


▶ MP3 files stored in the built-in memory will be played back first, followed by those stored in the Memory Card.

## ● Playing back any selected segment

This function is supported only when the player is playback mode for MP3 or voice file.

1. Press the MODE button to set the start point.  
("A<->" appears)
2. Press the MODE button again to complete selection.  
("A<->B" appears)
3. Press the MODE button again to cancel.



🔁 If you select any segment as the above, the MPIO plays back that segment repeatedly.

## ● Repeat

1. Press the REPEAT button and select.  
NORMAL → REPEAT → REPEAT ALL  
→ RANDOM REPEAT ALL → RANDOM

- To repeat the current track, select REPEAT
- To repeat all the tracks, select REPEAT ALL
- To play back tracks at random, select RANDOM and RANDOM REPEAT ALL



## ● DSP(Digital Signal Process) Mode

1. Press the DSP button repeatedly to select.  
NORMAL → POP → ROCK → CLASSIC

- The DSP mode will not work in conjunction with the voice mode.

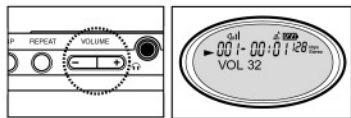


**NOTE** When you add 3D Option;  
NORMAL → POP → 3D-CIUB → ROCK → 3D-LIVE → CLASSIC → 3D-HALL



## ● Volume

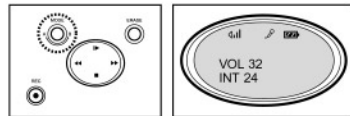
1. You can change the volume level with the VOLUME button.



## ● Recording voice

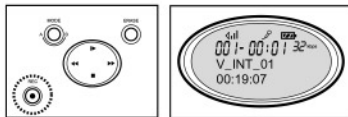
Up to 100 tracks(50 internal + 50 external) can be recorded. Voice is recorded in the ADPCM format, so the sound quality will be lower than that of an MP3 format.

1. Press the MODE button and select the built-in memory or the Memory Card to record a voice file.  
If you press the REC button first, you can directly start recording voice into the built-in memory.



- ➡ To store the file in the built-in memory, select 'V\_INT.'  
To store in the Memory Card, select 'V\_EXT'.

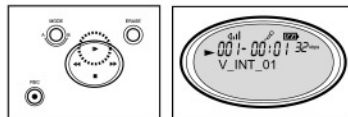
2. Press the REC button to start recording voice.  
To stop recording, press the STOP button.



- ➡ If 'FULL' is displayed, delete MP3 file(s) or voice file(s) to secure free space in the memory for recording voice.

## ● Playing back voice recording

1. Press the PLAY button (▶) in the voice mode to play back the voice of the current track.

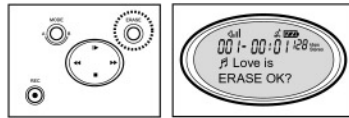
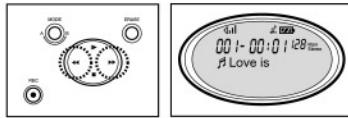


**NOTE** "V\_ INT\_ 01" displays the recording current track.  
The remain recording time displays next line.

## ● Erasing MP3 or voice file

Deleted files can not be recovered, so be cautious when erasing a file.

1. Press the MODE button and select the MP3 or voice mode.
2. Select the desired file using the FORWARD or REVERSE button.
3. After selecting a file, press the ERASE button. Then a message for confirmation, 'ERASE OK?' appears on the LCD.

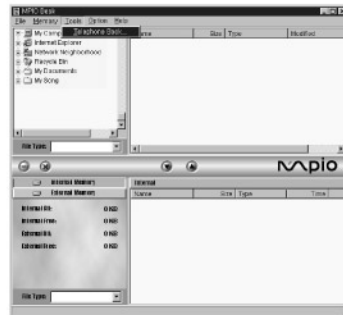


4. Press the ERASE button again to erase the file.  
Then 'ERASED' will be displayed.  
If you do not wish to erase the selected file, press the STOP button.

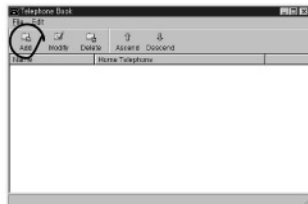


## ● Storing Telephone Numbers

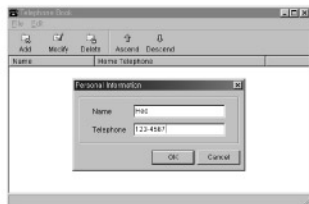
1. Select [Tool] → [Telephone Book] to execute the Telephone Book.



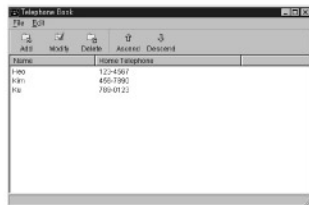
2. Click the ADD icon.



3. Enter the name and telephone number. And then, click [OK].

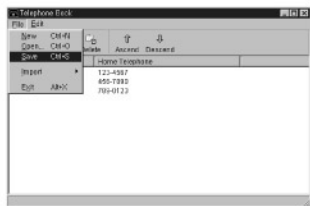


4. You can see the entered telephone numbers are displayed.

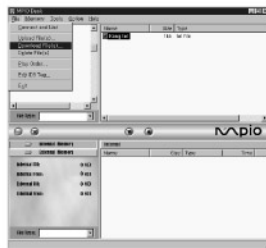


## ● Sending Telephone Book Entries to the MPIO

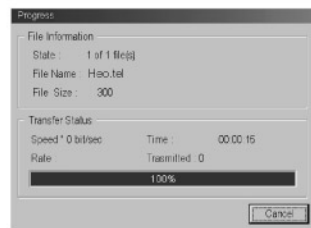
1. Select [File] → [Save Ctrl+S] to save the Telephone Book entries.



2. Select [File] → [Download File] to download the saved telephone number to the MPIO.



3. Progress window...

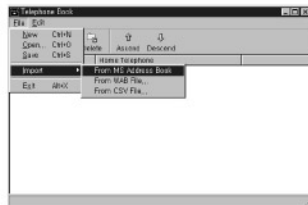


☛ The telephone book entries are saved as [.tel]. Thus, when sending the telephone book entries to the MPIO you must select the [.tel] file. You can store only one [.tel] file on the MPIO. If you attempt to store another [.tel] file, it will replace the existing file.

## ● Importing Telephone Book Entries

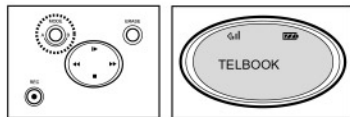
1. If you select [Import] → [From MS Address Book], you can import the telephone book entries from the Address Book in Microsoft Internet Explorer 4.X.

Or you can import the telephone book entries from [.wab] in a specific directory.

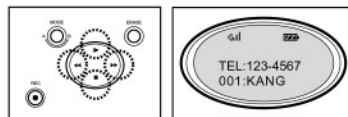


## ● Viewing the Telephone Numbers

1. Press the MODE button and select the telephone book mode.



2. Press the FORWARD/REVERSE button (skip 10 people at a time) or PLAY/STOP button (searching one by one) repeatedly until the desired telephone number appears.



- 🔄 Up to 250 telephone numbers can be stored.  
To edit telephone numbers, use the telephone number edit function of the MPIO Desk.

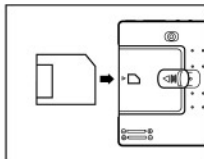


## ● Memory Card

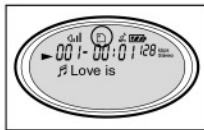
MP3 files can be stored on the Memory Card which is inserted in the MPIO. These files stored on the Memory Card are assigned higher track numbers than those of files stored in the built-in memory.

### 1. Loading

Turn off the MPIO's power.  
Check the orientation of the Memory Card and insert it in the Memory Card slot.

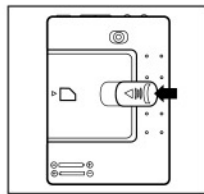


Turn on the power back on  
and check if the Memory Card  
indicator appears on the LCD.



### 2. Ejecting

Push the EJECT switch up to eject the Memory Card.



⚠ When the MPIO is playing, do not insert or eject the Memory Card.

⚠ Please do not use the Memory Card which are being used in digital camera or other MP3 players. Existing data in those cards could be damaged.

# Setting up EQ Sound

By using DSP key on the upper part of MPIO, users can enjoy dynamic sound effects, adjusting it to the users' delicate ears.

**1. Press DSP key on the upper part of MPIO.** (Can press DSP key while CD/cassette tape is being played)

On LCD window, "TREBLE + 0dB" sign will be displayed.

By pressing the volume buttons(+, -), users can adjust the TREBLE.

**2. While on TREBLE mode, press FF key. "PREF 0 +dB" sign will be displayed.**

By pressing the volume buttons, prefactor level can be adjusted.

A prefactor filters through irritating noises.

**3. While on PREF mode, press FF key once again.**

On LCD window, 3D Mode Off sign will be displayed. Press the volume button with + on it, the sign will change as 3D Mode ON.

Now, users can enjoy 3D sounds.

**4. Press FF key once again. On LCD window, BASS + 0 dB sign will be displayed.**

By pressing the volume buttons (+ -), Bass level can be adjusted.

**5. Press STOP key to delete the set up mode.**

**As shown above, users can adjust and control the sound.**

**However, MPIO provides Preset EQ program that gives the easiest and the best sounds.**

1) Press DSP key on the upper part of MPIO. As indicated above, turn to TREBLE mode. By pressing DSP key once again, POP mode will be set up. Press DSP key again, now it will transfer to DSP-Club mode.

2) With one click of DSP key, the EQ will change from Rock → DSP LIVE → Classic → DSP Hall mode.

Users can choose the appropriate EQ according to the music.

- Should the TREBLE, PREF, BASS be set up too high, raucous sounds could be heard.

# How to Use FM Radio.

MPIO has automatic selection function and 15 channel memory function.

1. While MPIO is off, press MODE/FM key once. It will turn into voice recording mode.  
While it is on voice recording mode, press MODE key once again, now FM Radio mode is on.  
(On LDC window, FM 87.50 sign will be displayed)
2. Press either FF key or REW key to select the radio frequency.  
Press FF key for long, it will automatically find the radio frequency.  
(On LCD window, FF-SEEK or REW-SEEK sign will be displayed)
3. With the radio frequency of the user's choice found, press ERASE button.  
On LCD window, SAVE:01? sign will be displayed.  
When ERASE button is pressed again, the selected radio frequency will be saved as channel number 1.
4. Up to 15 channels can be saved using the above method.  
When 15 channels are all filled up, newly selected channels will cover up the previously set up channels from channel number 1.
5. Once radio channels are saved, press PLAY or STOP buttons while on FM mode to bring along the saved channels of the user's choice.

# Troubleshooting

If you experience problems with your MPIO, refer to this manual first before calling for customer service.

**1. The player does not work or nothing is displayed on the LCD.**

- Check the capacity of the general batteries or the charge level of the rechargeable batteries.
- Two 1.5V AAA-size batteries (general or rechargeable) are required.  
Or check the polarity( + , -) of the batteries.

**2. The buttons on the MPIO do not work.**

- Check if the HOLD switch is down.

**3. There is no sound when the PLAY button is pressed in the MP3 mode.**

- Check that MP3 files are stored in the built-in memory or the Memory Card.

**4. Failed download of MP3 file or connecting PC.**

- Check the condition of the batteries which are supplying power to the MPIO and the connection between the parallel port of your PC and PC connecting cable.
- The MPIO supports ECP and ECP- emulation mode for the parallel port of all kinds of the PCs automatically. But if ECP-DMA supported PC is not connected to the MPIO, you must select the ECP-emulation mode in the optional menu of the MPIO Desk to confirm the mode setting.

**NOTE** If MPIO is set for ECP-emulation mode, file transmission speed will be 0.6~0.7Mbps.(lower than 1.3Mbps for normal status)

## 5. The Memory Card can not be inserted.

- There are two types of the Memory Card each works at 3.3/5V.

Check the type referring to the diagram. The 5V the Memory Card can not be used in the MPIO.



3.3V(O)



5V(X)

## 6. The file on the Memory Card is not being recognized.

- Files stored on the Memory Card by an MP3 player other than the MPIO can not be used because the data format is incompatible. Using the MPIO Desk, format the Memory Card and copy file(s) again.  
<NOTE> In any case, the Memory Card's header will not be damaged, so it can be used in any other device.

## 7. Failed voice recording in memory management.

- Initialize the internal memory in the MPIO Desk menu.

# Safety Precautions

Before you use the MPIO, please carefully read all the instructions below.

1. Do not subject the MPIO to severe impact or jarring.
  - Vibration experienced during walking or exercising will not affect the MPIO. However, dropping the MPIO or dropping a heavy object on the MPIO may result in damage or sound distortion.
2. Keep the MPIO away from water.
  - If water enters the MPIO, damage may result. If the MPIO comes into contact with water, wipe dry immediately with a dry cloth and call a service center.
3. Be careful when storing the set.
  - Avoid places with high humidity, strong magnetic fields, or extreme temperatures when you store your MPIO or the Memory Card.

# Customer Service

- Product information service

If you experience any troubles with your MPIO, please contact us by phone, FAX or E-mail at the following.

**TEL** : 82-2-2188-5858

**FAX** : 82-2-573-3623,3621,3650

**E-mail** : support@digitalway.co.kr

If you need software upgrades or further information regarding the MPIO, visit the below internet site.

**Internet Site** : <http://www.mpio.co.kr>

# Product Specifications

## ● MPIO

Processor	10MHz, 16bit CISC
Memory Capacity	Built-in Memory 32MB / 64MB
Power	3V
Battery	Two AAA-size general / rechargeable (Ni-Mn) batteries for 10-hr or longer playing time (with general batteries)
LCD	HTN-type LCD up to 12 numbers 18 English letters - 2 lines can be displayed at a time.
Dimensions (W × H × D) / Weight	66 × 90 × 18mm / 75g (without batteries)
Case	Plastic
File Transmission Speed	Up to 1.3Mbps
Memory Socket	Memory Card socket
Voice Recording	ADPCM format / up to 50 tracks/120 min.
Telephone Directory	Up to 250 telephone numbers
Signal to Noise Ratio	90DB
Earphone Power Output	7mW
Output Frequency Range	20Hz~20KHZ



# Safety Information

FCC Part 15: This equipment has been tested and found to comply with the limits for a Class B digital device, pursuant to Part 15 of the FCC Rules.

These limits are designed to provide reasonable protection against harmful interference in a residential installation.

This equipment generates, uses, and can radiate radio frequency energy and, if not installed and used in accordance with the instructions, may cause harmful interference to radio communications.

However, this notice is not a guarantee that interference will not occur in a particular installation. If this equipment does cause harmful interference to radio or television reception, which can be determined by turning the equipment off and on, the user is encouraged to try one or more of the following measures:

- \* Reorient or relocate the receiving antenna.
- \* Increase the distance between the equipment and receiver.
- \* Connect the equipment to an outlet on a circuit different from that to which the receiver is connected.
- \* Consult the dealer or an experienced radio / TV technician.

**Modifications**

Any changes or modifications not expressly approved by grantee of this device could void the user's authority to operate the device.

**Compliance**

This product conforms to the following Council Directive: \* Directive 89/336/EEC, 92/31/EEC(EMC)

**Declaration of Conformity**

Name: Digitalway Co., Ltd.

Address: Joong Pyung B/D(4F,6F,7F) 64-1, Woomyun Dong, Seocho-Ku, Seoul, Korea

declares under its sole responsibility that the product

Trade Name: MPIO

Model Number: SV

has been tested according to the FCC Part 15/CISPR22/95 requirements for Class B devices and found compliant with the following standards

EMI/EMC: AnSI C63.4 1992, FCC Part 15 Subpart B

This device complies with part 15 of the FCC Rules. operation is subject to the following two conditions:

1. This device may not cause harmful interference, and
2. This device must accept any interference received, including interference that may cause undesirable operation.

# Warranty

## MP3 DIGITAL AUDIO PLAYER LIMITED WARRANTY TO ORIGINAL PURCHASER

This MPIO brand product, as configured and distributed by Digitalway Co., Ltd. and delivered new, in the original carton to the original consumer purchaser, is warranted by Digitalway against manufacturing defects in materials and workmanship for following limited warranty period:

### **One(1) Year**

This limited warranty begins on the original date of purchase, and does not include transportation, installation, removal, and reinstallation.

Warranty repairs must be performed by Digitalway's authorized service center.

To receive warranty service, the original dated bill of sale must be presented upon request as proof of purchase to Digitalway.

Transportation to and from the service center is the responsibility of the purchaser.

Digitalway will repair this product, at our option and at no charge, with new or reconditioned parts or will exchange the product with a reconditioned unit if found to be defective during the limited warranty period specified above.

The product must be returned during the warranty period with transportation charges prepaid to Digitalway. Prior to returning any product for warranty service, the purchaser must contact Digitalway for problem determination and service procedures.

It is the purchaser's responsibility to secure all programs and data contained in or affected by the product. Digitalway does not warrant uninterrupted or error-free operation of the product, and shall not be liable for the loss or destruction of data or media resulting from the use or service of this product.

All replaced parts and products become the property of Digitalway and must be returned to Digitalway. Replacement parts and products assume the remaining original warranty, or ninety (90) days, whichever longer. Digitalway's obligations with respect to software products distributed by Digitalway under the Digitalway brand name are set forth in the applicable end user license agreement. Non-Digitalway hardware and software products are provided on an "AS IS" basis.

However, non-Digitalway manufacturers, suppliers, or publishers may provide their own warranties. This limited warranty covers manufacturing defects in materials and workmanship encountered in normal, noncommercial use of this product and shall not apply to the following, including, but not limited to: damage which occurs in shipment; applications and uses for which this product was not intended; failures or problems which are caused by products or equipment not supplied by Digitalway; accidents, misuse, abuse, neglect, misapplication, fire, water, lighting or other acts of nature; incorrect electrical line voltage, fluctuations or surges; damage caused by improper or faulty installation; improper connection with any peripheral; product alteration or modification; improper or unauthorized repair; cosmetic damage or exterior finish; product

will altered serial numbers;

failure to follow operating instructions, customer adjustment, maintenance and environmental instructions that are covered and prescribed in the instruction book; Use of non-Digitalway or unauthorized parts, supplies, accessories or equipment that damage this product or result in service problems; failures or problems due to incompatibility with other equipment.

The purchaser is cautioned that product performance is affected by system configuration, software, applications, purchaser data and operator control of the system, among other factors.

The product is considered to be compatible with many systems, however, it is the purchaser's responsibility to determine the functional implementation. Therefore, suitability of the product for a specific purpose or application is not warranted by Digitalway.

There are no express warranties other than those listed and described above, and no warranties whether express or implied, including, but not limited to, any implied warranties of merchantability or fitness for a particular purpose, shall apply after the express warranty periods stated above, and no other express warranty of guaranty given by any person, firm or corporation with respect to this product shall be binding on Digitalway. Digitalway shall not be liable for loss of revenue or profits, or any other special, incidental or consequential damages caused by the use,

misuse or inability to use this product, regardless of the legal theory on such the claim is based. And even if Digitalway has been advised of the possibility of such damages. Without limiting the foregoing, purchaser assumes all risk and liability for loss, damage or injury to purchaser and purchaser's property and to others and their property arising out of the use, misuse or inability to use this product sold by Digitalway not caused directly by the negligence of Digitalway. This limited warranty shall not extend to anyone other than the original purchaser of this product, is nontransferable and states your exclusive remedy.

Some states do not allow limitations on how long an implide warranty lasts, or the exclusion or limitation of incidental or consequential damages, so the above limitations or exclusions may not apply to you. This warranty gives you specific legal rights, and you may also have other rights which vary from state to state. This product is for personal use only, are is only for use in compliance with the limitations of copyright and other laws.