

# USER MANUAL

## PD-200

PD

Hercules

FuXion  
Expandable



# Table of Contents

<b>Introduction</b> .....	<b>2</b>
Copyright notice.....	3
Safety information.....	3
Precautions.....	5
<b>In the Package</b> .....	<b>6</b>
<b>Specifications</b> .....	<b>7</b>
<b>Knowing Your Portable MP3 Player</b> .....	<b>8</b>
Name of parts.....	8
Inserting battery.....	9
Turn on MP3 player.....	10
Turn off MP3 player.....	10
Multiple Language Support.....	10
<b>PC Connection</b> .....	<b>11</b>
<b>Operating Controls</b> .....	<b>15</b>
Operating in music mode.....	15
Operating in radio mode.....	17
Operating in voice mode.....	19
<b>Detailed Controls</b> .....	<b>21</b>
Switching modes.....	21
Playing music or voice files.....	21
Music recording in voice mode.....	22
Voice recording in voice mode.....	23
Radio recording in radio mode.....	23
<b>Menu Settings</b> .....	<b>24</b>
Menu settings in Music mode.....	24
Menu setting in Radio mode.....	26
Menu setting in Voice mode.....	29
<b>System Settings</b> .....	<b>30</b>
<b>Troubleshooting</b> .....	<b>32</b>
<b>Company Contacts</b> .....	<b>34</b>

# Introduction

Thank you for purchasing PDHercules portable MP3 player!

With this MP3 player you can enjoy digital music in a more convenient way. You can directly encode your music from any audio source and record your voice into voice format, all of this **WITHOUT** the use of a computer. You can also transfer songs you enjoy from your computer to your player. With its one-touch voice-recording feature you can record lectures, interviews or meetings in good quality.

The MP3 player is compact in size, light in weight and highly functional. Begin to enjoy the various features of your player by following this user manual.

To familiarize yourself with your player, here are some function highlights:

- Expandable MMC/SD card slot (support 32MB, 64MB, 128MB)
- Direct line-in encoding to MP3 or voice format
- MP3, WMA, ADPCM playback
- 30 FM radio preset channels (*Enhanced Feature!*)
- FM recording function
- Voice recording from built-in microphone
- Voice messages recording in MP3 or voice format
- Supports ID3 tagging
- Firmware upgrades available
- A-B looping support
- 5 equalizers
- Sleep preset

## **Copyright Notice**

You must be aware that distribution of MP3 files without the permission from the content owner is against the copyright laws. Perception Digital Ltd. and its associating companies will not be liable against such actions.

## **Safety information**

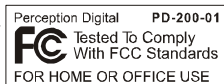
The user manual or instruction manual for an intentional or unintentional radiator shall caution the user that changes or modifications not expressly by the party responsible for compliance could void the user's authority to operate the equipment.

Modifications not authorized by the manufacturer may void users authority to operate this device.

This equipment has been tested and found to comply with limits for class B digital device, pursuant to part 15 of the FCC rules. These limits are designed to provide reasonable protection against harmful interference in a residential installation. This equipment generates, uses and can radiate radio frequency energy and, if not installed and used in accordance with the instruction, may cause harmful interference to radio communications. However, there are no guarantees that interference will not occur in a particular installation. If this equipment does cause harmful interference to radio or television reception, which can be determined by turning the equipment off and on, the user is encouraged to try to correct the interference by one or more of the following measures:

# Introduction

- Reorient or relocate the receiving antenna
- Increase the separation between the equipment and receiver
- Connect the equipment into an outlet on a circuit different from that to which the receiver is connected.
- Consult the dealer or an experienced radio / TV technician for help. Keep in mind, modifications not authorized by the manufacturer may void users authority to operate this device.



If the product suddenly has no response or power off, it may be caused by electrostatic discharge. If this circumstance, please follow the procedures below for recovery:

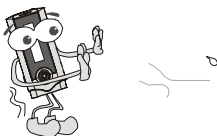
- Switch off the unit, if the unit has no response
- Turn on the unit again

# Introduction

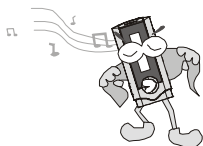
## Precautions



Do not abuse your MP3 player by using extreme force.



Keep the unit away from high humidity.



Use a soft towel to clean the surface of your player.

Remove the battery from the player when you are not using the MP3 player. This is to avoid needless battery wear.



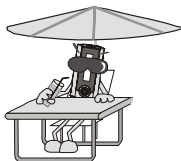
Avoid keeping or operating the unit in places with strong magnetic field, direct sunlight, or heat exposure for extended periods of time.



Do not open the MP3 player, as doing so will damage the unit.



Keep the player away from chemicals.



# In the Package



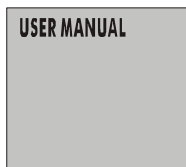
Main Unit



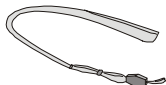
Stereo Earphone



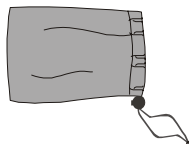
Mini USB Cable



User Manual



Neck String



Carrying Pouch



Warranty Card (Optional)



Battery



Line-in Cable



MMC/SD Card (Optional)



CD-Rom (Optional)

# Specifications

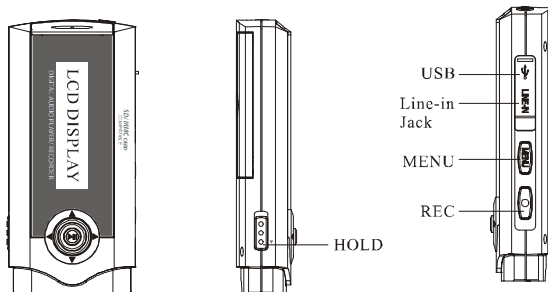
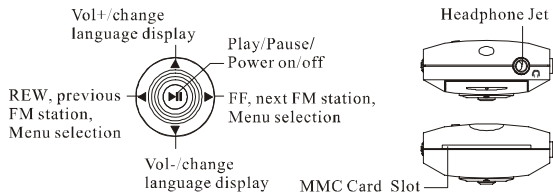
Size (HxWxD)	88x41x15mm
Net Weight	42g (without battery)
Internal Flash Memory	32MB or 64MB(depending on product version)
Power Supply	1x AAA alkaline battery
PC Interface	USB
Radio Function	FM with auto scan and 30 preset channels
Digital Music Format	
Playback	MP3, WMA, all bit rates including VBR
Record	In MP3, ADPCM format
Digital Voice Format	ADPCM (32kbps)
Built-in Microphone	Electric condenser microphone
Signal to Noise Ratio	>90dB
Frequency Range	20Hz - 20kHz
Battery Life	12+ hours
Support External Memory	SD/ MMC Memory Card
Equalizer	Jazz, Rock, Classic, Pop, User Default
Play Mode	Normal, Repeat one, Repeat all, Random, Repeat random

*All specifications are subject to change without notice.*

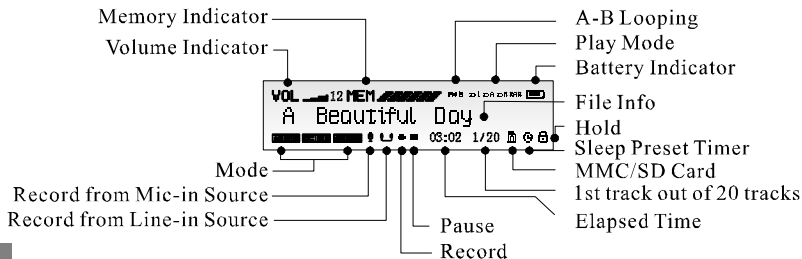


# Knowing your Portable MP3 Player

## Name of parts



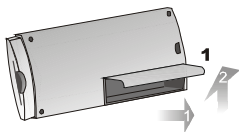
## LCD: Display Window



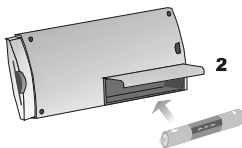
# Knowing your Portable MP3 Player

Memory Indicator	Shows how much memory is used. The filled block represents the remaining memory. For a 128MB player, one block represent about 21MB of memory. For a 256MB player, one block represents about 42MB of memory.
A-B Looping	This special feature enables you to learn a language, repeat a voice recording or repeat your favorite section of the song .
Battery level indicator	Shows how much longer the battery can be used, level decreases as battery is used.

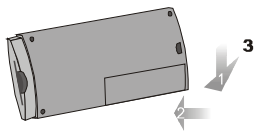
## Inserting battery



Open the battery door according to this direction

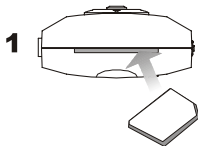


Put the battery into the compartment. Pay attention to the polarity.

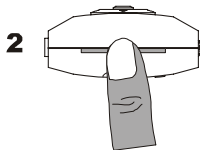


Close the battery door.

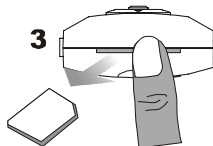
## Inserting MMC/SD card



Insert the MMC/SD card in a correct direction, you will see an arrow in the card right hand corner.



Press once so that the card is insert completely in the socket, you will see the card icon in the LCD.



To release the card, press one to the card and it will come out directly.

# Knowing your Portable MP3 Player

## Remarks :

1. Make sure the card is facing the correct direction when inserting into the slot.
2. When inserting the card, make sure the logo of the MMC/SD card is facing upwards.
3. There is a locking device on the SD card. You cannot format, delete or download any files when the SD card is locked.

## Turn on MP3 player

Press and hold ►||

Make sure the **HOLD** button is switched off. If not, “**LOCKED**” will be displayed.

## Turn off MP3 player

Press and hold ►|| (except when your player is connected to a PC)

## Multiple Language Support

When the player is in stop mode, pressing the Vol+ and Vol- buttons will change the song name display language. By using these buttons will convert the song titles through a series of different languages listed below:

Western European Languages - (ISO8859)

Korean (Hangeul, KS)

Japanese (Hiragana, Katakana and Kanzi, shift JIS)

Traditional Chinese (Big 5)

Simplified Chinese (GB)

# PC Connection

This is a mass storage device. No driver installation is required except Windows 98. The driver is not required for Windows 2000/XP or Mac. For Window 98 users, please download the driver from [www.perceptiondigital.com](http://www.perceptiondigital.com). Locate the downloaded driver file (setup.exe) on your hard drive and double click the driver file (setup.exe). Follow on-screen prompts to complete the driver installation process.

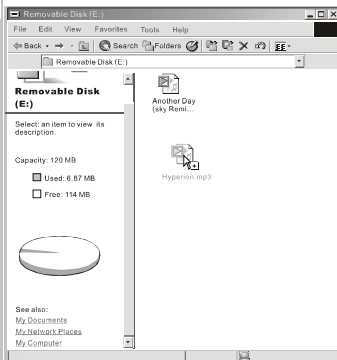
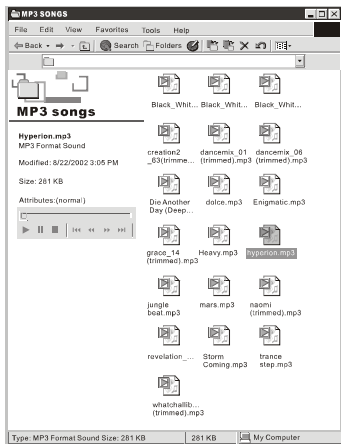
(For Window 98 users, you can use the Window 98 driver CD if you retailer bundled it in the package)

Mac OS 8/9 may or may not require driver installation.

## **Transfer files from PC to player:**

1. Switch on the player and connect it securely to the PC with the USB cable.
2. Double click on “My Computer” on the desktop of windows, there will be an additional drive created.
3. If the player is connected to your PC, you will see “USB Connected” on the player’s screen.
4. To download music files to your MP3 player, simply drag the files from the Windows File Explorer and drop them to the newly opened drive. You can also upload files from the player to the PC by doing the reverse.

# PC Connection



## CAUTION:

ONLY UNPLUG THE USB CABLE WHEN ALL DOWNLOAD PROCEDURES ARE COMPLETED.

Do not unplug the USB cable when the LCD is still displaying “USB writing” as doing so may corrupt the files stored in the player and you will need to re-format the MP3 player. If the player encounters abnormal interruption during recording such as battery removal, you may also need to re-format it.

## **Add on functions:**

1. The MP3 player can also be used as an external drive for storage of non-music files.
2. The MP3 player is compatible with Music Match. You can directly rip your audio CDs to WMA or MP3 format using Music Match software and directly download to the player.

\* Our MP3 player does not support WAV files downloaded or created by user. It only supports WAV files recording direct from the MP3 player.

## **To differentiate internal & external memory drive:**

1. You will find two removable drive after plugin the USB cable with the computer.
2. Check once to the drive, you can check the memory size of the particales drive (32MB / 64MB).
3. If insert MMC/SD card, the drive size is same with the card.

## **How to format the player?**

The purpose of re-formatting the player is to try to restore the player to normal operation. This is for when the player is not able to function properly or in cases where you player is unable to power on. Keep in mind, that the content of the player will be removed once being formatted.

\* Please make sure when you format the player, the "file system" is calling FAT or FAT16. Otherwise, the player will appear "Error please reformat". To solve the problem, user is suggested to reformat the player by choosing FAT/FAT16 when the format windows pop-up.

1. Connect the player to the PC.
2. Right click the additional drive and click Format.
3. Click "Yes" to confirm.

### **Firmware Upgrader**

You should check your vendor's website for new firmware upgrades, these developments provide add-on functions and language support options. Upgrades are announced on the web site and users can then download the software from the download section at <http://www.perceptiondigital.com>.

# Operating controls

There are three modes which you can operate your portable MP3 player; music mode, radio mode, and voice mode.

## Operating in Music Mode

The following tables show all key responses under different operations in music mode.

### Music Playing Mode

Key	Key Action	Browsing	Playing
▶	Short	Play current track	Stop/Pause current track
	Long	Power off	Power off
▶	Short	Move to next track	Play next track
	Long	Move to next track continuously	Fast Forward
◀	Short	Move to previous track	Play previous track
	Long	Move to previous track continuously	Rewind
MENU		Enter Menu Mode	Enter Menu Mode
VOL +	▲	Change to next display language code	Increase the volume
VOL -	▼	Change to previous display language code	Decrease the volume
REC		Start recording	Set point A (A-B loop function)
—> Hold	On/Off	All keys are locked	All keys are locked



# Operating controls

## Music Recording Mode

Key	Key Action	Recording
▶	Short	Pause / Resume recording
	Long	Power off
▶	Short / Long	No response
◀	Short / Long	No response
MENU		No response
VOL +	▲	No response
VOL -	▼	No response
REC		Stop recording
—> <b>Hold</b>	On/Off	All keys are locked

# Operating controls

## Operating in Radio Mode

The following tables show all key responses under different operations in radio mode.

### FM Radio Playing Mode

Key	Key Action	Normal Mode	Preset Mode
▶	Short	No response	No response
	Long	Power off	Power off
▶	Short	Increase frequency (step size = 0.05MHz)	Move to next preset station
	Long	Auto-search up	Continuously move to next preset station
◀	Short	Decrease frequency (step size = 0.05MHz)	Move to previous preset station
	Long	Auto-search down	Continuously move to previous preset station
MENU		Enter Menu Mode	Enter Menu Mode
VOL +	▲	Increase the volume	Increase the volume
VOL -	▼	Decrease the volume	Decrease the volume
REC		Start recording	Start recording
—>Hold	On / Off	All keys are locked	All keys are locked

# Operating controls

## FM Radio Recording Mode

Key	Key Action	Recording
▶	Short	Pause / Resume recording
	Long	Power off
▶	Short / Long	No response
◀	Short / Long	No response
MENU		No response
VOL +	▲	No response
VOL -	▼	No response
REC		Stop recording
—>Hold	On / Off	All keys are locked

# Operating controls

## Operating in Voice Mode

The following tables show all key responses under different operations in voice mode.

### Voice Playing Mode

Key	Key Action	Browsing	Playing
▶▶	Short	Play current track	Stop/Pause current track
	Long	Power off	Power off
▶	Short	Move to next track	Play next track
	Long	Move to next track continuously	Fast Forward
◀	Short	Move to previous track	Play previous track
	Long	Move to previous track continuously	Rewind
MENU		Enter Menu Mode	Enter Menu Mode
VOL +	▲	Change to next display language code	Increase the volume
VOL -	▼	Change to previous display language code	Decrease the volume
REC		Start recording	Set point A (A-B loop function)
—>Hold	On / Off	All keys are locked	All keys are locked

# Operating controls

## Voice Recording Mode

Key	Key Action	Recording
▶	Short	Pause/Resume current track
	Long	Power off
▶	Short / Long	No response
◀	Short / Long	No response
MENU	Short / Long	No response
VOL +	▲	No response
VOL -	▼	No response
REC		Stop recording (Go back to previous screen)
—>Hold	On / Off	All keys are locked

# Detailed Controls

## Switching Modes

To switch from one mode to another, press the **MENU** button, then press the ►|| button. Next, to select the mode, use the ◀ / ▶ to select the desired mode, then press the ►|| button to confirm your selection.

## Playing Music or Voice files

### 1. Play and stop

Press the ►|| button to play tracks. To stop the track, press the ►|| button again.

### 2. Selecting tracks

- a. When the MP3 player is playing a file, move towards the ▶ direction quickly to play the next track and move towards the ◀ direction quickly to play the previous track.
- b. When the player is stopped, moving with ◀ or ▶ allows you to browse through the tracks stored in memory.

### 3. Moving within track

Moving with ◀ or ▶ for longer than 1 second will fast forward or rewind during a track.

## Detailed Controls

### 4. A-B looping

While playing music or voice files, you can set a section to repeat continuously. Press the **REC** button to mark the point where you want the section to start (Point A). Then, press **REC** again to mark where you want the section to end (Point B). The selected section will then repeat continuously.

### 5. Deleting track and voice files

Choose delete from MENU. Use ◀ or ▶ to select track or voice file you wish to delete and press ▶|| to delete.

### Music recording in music mode

This function enables you to record any audio source to the machine. Simply, connect the audio source to line-in jack by using a stereo cable.

1. Select SET (system setting) at any mode, choose source as line (line-in), press play button to confirm the source.
2. Put an end of “line in cable” into the earphone jack of the normal audio player and the other one of “line in cable” into the “input jack” of the MP3 player.
3. You should start at the stop mode of music mode.
4. Press REC button to start recording.
5. Press REC button to stop recording.
6. Press play button to pause/resume the current recording file.
7. After recording, press play button to play the recorded file and it will be displayed as V001, V002.... V003.wav.
8. The recording music files are only playable on the MP3 player and not on the PC.

## Voice recording in voice mode.

This feature offers high quality one touch voice recording an ADPCM format.

1. Select SET (System setting) at any mode, Choose source as MIC, Press play button to confirm the source.
2. You should start at the stop mode of voice mode.
3. Press REC button to start recording.
4. Press REC button to stop recording.
5. After recording, press play button to play the recorded file and it will be displayed as V001, V002.... V003.wav.

Note:

The default recording source in Voice mode is the internal microphone , “MIC-IN.” You can record audio files line-in in voice mode. The quality of the audio file will be in voice quality but the file size will be smaller. Please refer to the System Settings section to find out how to do this.

## Radio recording in radio mode

First navigate your player into radio mode. Press the **REC** button to start recording in radio mode. To stop recording, press **REC** again. When recording, a “ ● ” will be shown on the LCD display.

Note:

Radio recording quality depends on the reception quality at the time of recording.



# Menu Settings

To change the settings, use the ◀ / ▶ jog dial to select each particular option. Press the ▶|| button to enter into the sub-menu and use the ◀ / ▶ jog dial to choose the desired settings. Press the ▶|| button to confirm your choice. To change the setting in different modes you need to press the **MENU** button.

The following table shows all key responses for menu settings in different modes:

KEY	KEY ACTION
<b>MENU</b>	Enter/exit menu
◀ / ▶	Move right/left
▶	Enter into sub-menu/confirm
<b>Others</b>	No response

## Menu settings in Music Mode



MENU MODE PLAYMODE EQ RBR DELETE SETTING

Switching to  
Music Mode.



MODE MUSIC RADIO VOICE

# Menu Settings

---

## Playmode

PLAYMODE  NORMAL REPEAT ONE REPEAT ALL RANDOM RPTRANDOM

- Normal: Play all in order once.  
Repeat One: Continuously repeat the current track.  
Repeat All: Play all tracks in order repeatedly.  
Random: Continuously select tracks randomly.  
Rpt Random: Continuously repeat all tracks randomly.
- 

## Equalizers

EQ NOR ROC JAZ  CLA POP USER

Select Normal, Rock, Classic, Jazz, Pop and User default

USER BASS TREBLE

- Bass: Set bass from levels 1 to 4 (1 is the weakest and 4 is the strongest)  
Treble: Set treble from levels 1 to 4 (1 is the weakest and 4 is the strongest)
- 

## Recording Bit Rates

RBR 48 96 128

There are various choices of recording bit rates in MP3 recording: 48kbps, 96kbps, and 128kbps.

# Menu Settings

---

Deleting File

DELETE ?

Go to file you want to delete.

Press Menu

Press the play button to confirm deletion

## Menu setting in Radio Mode

### Normal Mode

MENU MODE PRESET MODE CH PRESET MONO SETTING

---

Switching to  
Radio Mode

MODE MUSIC RADIO VOICE

---

Channel Preset

CH PRESET ?

Your MP3 player can store up to 30 preset programme frequencies. These programmes can be quickly tuned when the radio is in the PRESET MODE. This section gives instructions for saving programme presets. The next section explains how to enter the PRESET MODE and retrieve a preset programme.

# Menu Settings

1. Enter the RADIO mode as described previously.
2. In NORMAL MODE tune the radio to the programme you wish to preset.
3. Press the MENU button.
4. Use the ► or ◀ controls to select CH PRESET.
5. Press ►◻ .
6. Use the ► or ◀ controls to select the preset number.
7. Press ►◻ .

Mono/Stereo  
Mode

MONO

STEREO

Set FM radio output to stereo or mono

## Preset Mode

**MENU** **MODE** NORMAL MODE DELETE MONO SETTING

Switching to  
Radio Mode.

**MODE** MUSIC **RADIO** VOICE

# Menu Settings

## Using the preset mode

1. Enter the RADIO mode as described previously.
  2. Press the MENU button.
  3. Use the ► or ◀ controls to select PRESET MODE.
  4. Press ►|| . The radio is now operating in preset mode.
  5. Use the ► or ◀ controls to select the preset programmes until the one you require is selected.
- 

Deleting Program  
preset

DELETE ?

## Deleting programme presets

1. Enter the RADIO PRESET MODE as described above.
2. Press the MENU button.
3. Use the ► or ◀ controls to select DELETE.
4. Press ►||
5. Use the ► or ◀ controls to select the preset programme you wish to delete.
6. Press ►|| .

# Menu Settings

---

Mono/Stereo  
Mode

MONO

STEREO

Set FM radio output to stereo or mono

## Menu setting in Voice Mode

MENU MODE DELETE SETTING

Switching to  
Voice Mode

MODE MUSIC RADIO VOICE

Deleting Files

DELETE ?

Go to file you want to delete.

Press Menu

Press the play button to confirm deletion

# System Settings

**BETTINE** SOURCE SLEEP RESUME SCROLL BACKLIT CONTRAST DEFAULT VERSION IDLE ASD

To change system settings, use **▶ & ◀** to move to each particular system setting sub-menu and press **▶||** to enter the sub-menu. Use **▶ & ◀** to choose the desired settings. Press **▶||** to confirm.

1. Source: You can select the recording source in this menu. Selecting LINE-IN means you will be recording from line-in and selecting MIC-IN means you will be recording from the internal microphone.

**SOURCE** LINE-IN MIC-IN

2. Sleep preset: Choose the time in minutes that you want the device to automatically power off.

**SLEEP** OFF 15 30 45 60

3. Resume: Use the **◀ / ▶** to switch between “On” and “Off”. This will enable or disable the resume function. This function allows you to return to a track when you power on the device again.

**RESUME** ON OFF

4. Scrolling Speed of song’s name: Choose between 5 scrolling speed levels, 4 is the fastest speed and OFF disables scrolling.

**SCROLL SP** OFF 1 2 3 4

# System Settings

5. **Backlit time:** There are 4 backlit time levels; 10, 30, 60, and permanent. These refer to the length of time in seconds the backlight will remain on after pressing a button.

```
BACKLIT TIME  OFF 10 30 60 PERM
```

6. **Contrast level:** Set the display contrast from level 1 to 10.

```
CONTRAST  1 2 3 4 5 6 7 8 9 10
```

7. **Default setting:** You may choose to resume your settings to default by pressing either “Yes” or No.”

```
DEFAULT  YES  NO
```

8. **Version number:** For checking the firmware version of this player.

```
VERSION  F4-A-B-F-1.0
```

9. **Idle time:** The device will automatically power off when it is left for a specified idle time. For example, you can set it at 3 seconds and the device will turn off when it is left idle for this length of time.

```
IDLE TIME  OFF 3 5 10 30
```

10. **ASD (Audio Silence Detection):** This menu allows you to choose the length of silence before ending the current line-in recording and starting a new file. You can also turn the silence detection feature off with this menu.

```
ASD  OFF 1 2 3
```



# Troubleshooting

1. The player does not work or nothing is displayed on the LCD.

Check the capacity and the polarity of the battery.

The player will automatically shut down to save power if it is left idle for 1 minute.

2. The buttons are not responding.

Check if the “Hold” button on the main unit is locked. If yes, buttons will have no response.

3. Unable to play MP3 file.

Check if the memory contains any MP3 files.

Check if the player is in Music Mode.

Check if the MP3 player supports the format of the stored files.

4. Unable to play ADPCM

Check if the memory contains any VOC files

Check if the player is in Voice Mode.

5. Unable to record via line-in.

Check if there is enough space in the selected memory.

Check if cable is stereo and connected to the device properly.

6. A-B looping function is not working.

This function only works during playback.

## 7. Unable to install software.

Our installation CD only supports Windows 98, ME, NT, 2000, XP XP Pro, XP home with Latest Windows Service Pack. Other systems are not supported.

## 8. Unable to find the mass storage device after connected to the PC.

Make sure your have installed the correct driver. Make sure the player is power on and ready. Make sure USB device is installed. You may check this in the “Device manager” in your PC.

## 9.How to reset MP3 Player to factory settings.

Choose default setting in system settings. Choosing “YES” allows you to reset the player to factory default settings.

## 10. Backlight does not turn on.

Check if the backlight is disabled in the system setting. This is for power saving purposes.

## 11. When insert MMC/SD card, the player stop?

It is because when your insert the MMC/SD card, the device need to re-determine the song playlist both internal & external. So everytime you insert a MMC card, the number of songs that will be played is different and sequence of song play is different and required to re-determined again.

# Company Contacts

**For International Inquiry:**  
**[technical@perceptiondigital.com](mailto:technical@perceptiondigital.com)**