

**DIGITALWAY**

**mpio**

designing your digital dream

**HD100**

**User's Guide**

---

**<HD100> User's Guide**

Date of Publication : Apr. 2003

Date of First edition : Apr. 2003

Publishing Company : Digitalway Corporation

Address : 5F, Korea Design Center, 344-1, Yatap-dong, Bundang-gu,  
Seongnam-si, 463-828, Korea

Tel : +82-31-788-7230

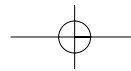
Fax : +82-31-788-7240

Homepage : [www.mpio.com](http://www.mpio.com)

---

©2003 Digitalway Corporation


*Please read all instructions in this User's Guide before using the player.*



Designing Your Digital Dream ..... **mpio**

Under the copyright laws the documentation cannot be copied, photocopied, reproduced, or translated in whole or in part, without the prior expressed written consent of Digitalway Corporation.

RealOne player is a trademark or registered trademark of RealNetworks, Incorporated.

**SRS WOW** (  ) is a trademark of SRS Labs, Inc. WOW technology is incorporated under license from SRS Labs, Inc.

Microsoft Windows, Windows Explorer and Windows Media are trademarks or registered trademarks of the Microsoft Corporation.

All contents of the installation CD included with this product are copyrighted by Digitalway Corporation or used with the permission of their copyright owners. It is unlawful to copy or distribute this information in any way without the express written consent of Digitalway Corporation.

All other products, services, and company names are the property of their respective owners.

**DIGITALWAY**

**Table of Contents**

**1. Introduction**

- 1. Document Conventions / 04
  - Button Press Techniques

**2. Player Overview**

- 1. Accessories Included with your HD100 / 05
- 2. Features and Controls / 06
  - Control Panel
- 3. Charge Battery / 08
- 4. Power HD100 On, Off and Hold / 08
- 5. Description of Player's Display / 08

**3. Install RealOne Player Software & Rip Music**

- 1. Install RealOne player Software / 12
- 2. Create Digital Music Files / 13

**4. Transfer Music & Data Files**

- 1. Connect the USB Cable / 16
- 2. Disconnect the USB Cable / 17
- 3. Transfer Music and Data Files with Drive Letter Support / 17
  - Windows Explorer
  - From a Software Application

**5. Using Your player**

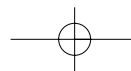
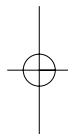
- 1. Play Mode / 20
  - LCD Description
- 2. FM Radio Mode / 21
  - Use the FM Radio
  - Store an FM Radio Preset
  - Select a Channel Preset
- 3. Voice Record / 23
  - Create Recording
  - Playback Recording

**6. Menu Mode**

- 1. Overview / 25
- 2. Music Menu / 26
- 3. Recordings Menu / 27
- 4. Options Menu / 28
  - Sound
  - Display
  - Play Option
  - Power Off
  - Output
  - Mic Sensitivity
  - FM Step Size
- 5. Disk Tools Menu / 40
  - Disk Space Usage
  - Reconcile Music
  - Format Hard Drive
- 6. About Menu / 42

**7. Troubleshooting & Specifications**

- 1. Safety Precautions / 43
- 2. Player Issues / 44
- 3. Sound Problems / 44
- 4. Problems Connecting to Computer / 44
- 5. Technical Specifications / 45
  - Computer Requirements
- 6. Approvals / 46
  - FCC
  - Industry Canada
  - CE
- 7. Limited Warranty / 48







# 1 Introduction

Welcome to the world of personal music players and the digital lifestyle. Using the latest technological advances in both hardware and software, the HD100 allows you to carry a library of your favorite music wherever you go.

## 1. Document Conventions

To use the HD100 Player and RealOne player software, you must have at least basic skills with the Microsoft Windows operating system. This document uses the following conventions and terminology:

-  Note symbol indicates a useful tip.
-  Caution symbol indicates important information to prevent damage to your player or avoid inconvenient situations.
- **Word or phrase in bold** indicates a menu or button selection on the player. For example: Click the OK button.
- *Phrase in italics* typically indicates a cross-reference to a section in the User's Guide.
- **>** This character is used to describe menu / submenu selections on the HD100 or in the computer software. For example, select the **File > New menu**.
- **Button Press Techniques** Some of the HD100 buttons perform different functions depending on how long the button is pressed before it is released. For example, in Play Mode, a short press of the button goes to the next track, where as a longer press of the same button fast forward within the current track.  
This distinction is made with the following phrases:
  - **PRESS** Instructions that say "press" the button, signify you press and immediately release the button; it is a short press.
  - **PRESS AND HOLD** Instructions that say "press and hold" the button signify that you press and momentarily hold the button before releasing it; it is a long press for about one second.



# 2 Player Overview

This chapter describes the following topics:

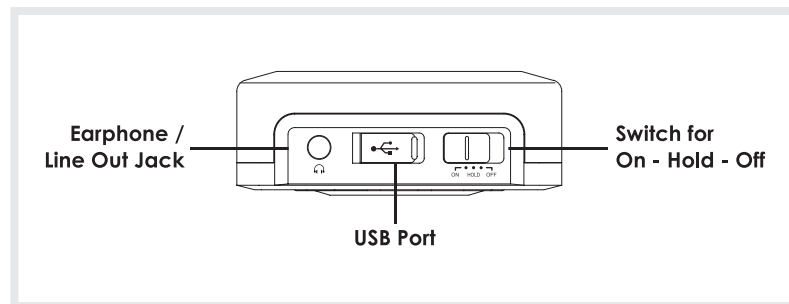
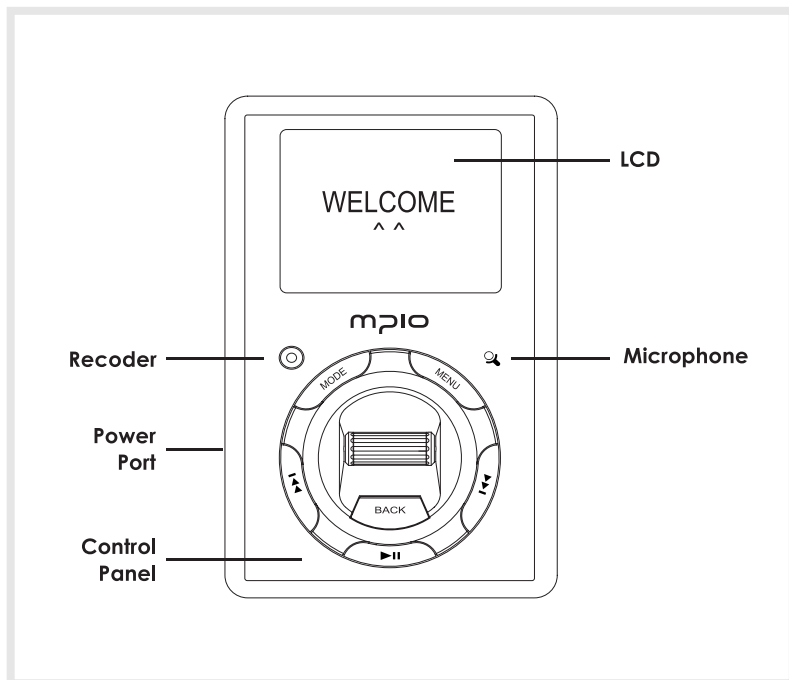
- *Accessories Included with your HD100 on page 5.*
- *Features and Controls on page 6.*
- *How to Charge Battery on page 8.*
- *How to Power HD100 On, Off and Hold on page 9.*
- *Description of Player's Display on page 9.*

## 1. Accessories Included with Your HD100

- Quick Guide
- Installation CD with:
  - Driver
  - RealOne player
  - Adobe Acrobat Reader
  - User's Guide as a PDF file
  - Quick Guide as a PDF file
- Compact stereo earphones
- USB Cable
- Power adaptor
- Carrying case with belt clip
- RCA audio Cable (for home stereo connection)

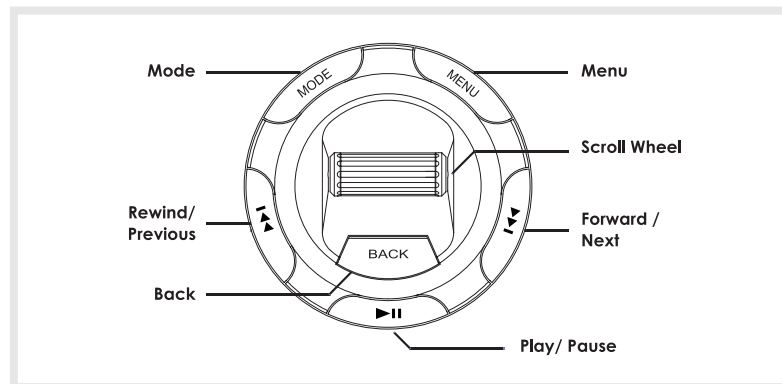
## 2. Features and Controls

The following includes illustrations of the player from the front and top perspectives and identifies features and controls.



### Control Panel

The Control Panel performs a variety of functions depending on which mode the player is in. The following summarizes the functionality and then detailed information is provided in the later sections.



**MODE** Switch between Play and FM Radio Mode.

**MENU** Used to display the Main Menu from Play Mode.

**SCROLL WHEEL** Scroll the wheel up or down to increase or decrease the volume. In FM Radio Mode, press the Scroll Wheel to display the pre-set list. In Menu mode, scroll up or down to highlight a menu item and press the wheel to select an item.

**Fast Forward** Fast forward a track or move to the next track; tune to a radio station in FM Radio Mode. Also used to highlight the next item in Menu mode.

**Play/Pause** Used to play or pause a music track or voice recording.

**BACK** Go back to previous screen in Menu Mode or display / hide the FM presets list.

**Rewind / Previous** The rewind / previous button is used to rewind a track, move to a previous track or tune in FM Radio Mode. Also used to highlight the previous item in Menu Mode.

**Recoder** Press and hold to start a voice recording; press to stop a voice recording.

### 3. Charge Battery

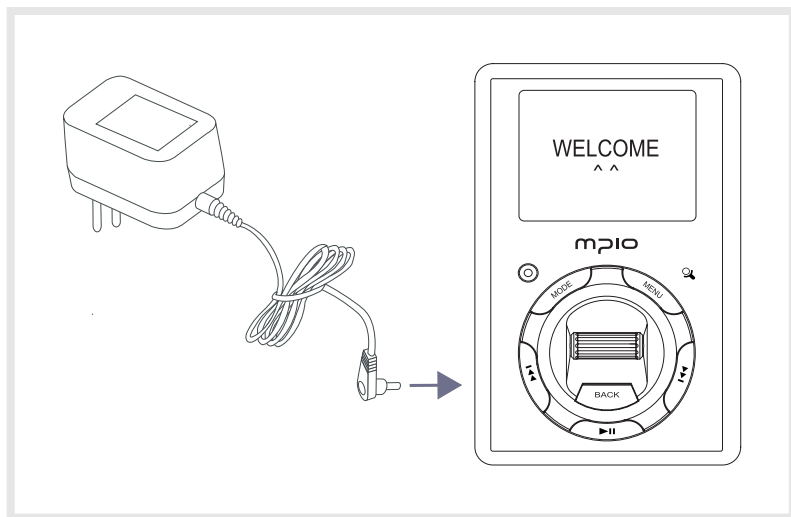
The built-in Lithium-Ion battery in your HD100 will last for up to 11 hours of play and takes about 3 hours to fully charge.

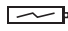


It is unnecessary to fully charge or completely discharge the battery power each time. The Lithium-Ion battery is not subject to a memory effect that some battery chemistries experience with partial charging. However, you may want to fully charge the battery to maximize playing time.

#### To charge the battery follows these steps:

1. Connect the Power Adaptor to the player and a power source.

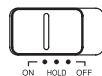


2. As the battery charges, the battery icon (  ) on the LCD animate. When fully charged in approximately 3 hours, the icon no longer animates and Battery Charging Complete shows on the LCD.

You may listen to your player as it charges but it will take longer to charge.


### 4. Power HD100 ON, OFF and HOLD

**POWER ON** To turn on the player, move the switch at the top of the player to the **ON** position. You will see a splash screen on the LCD followed by Play Mode.



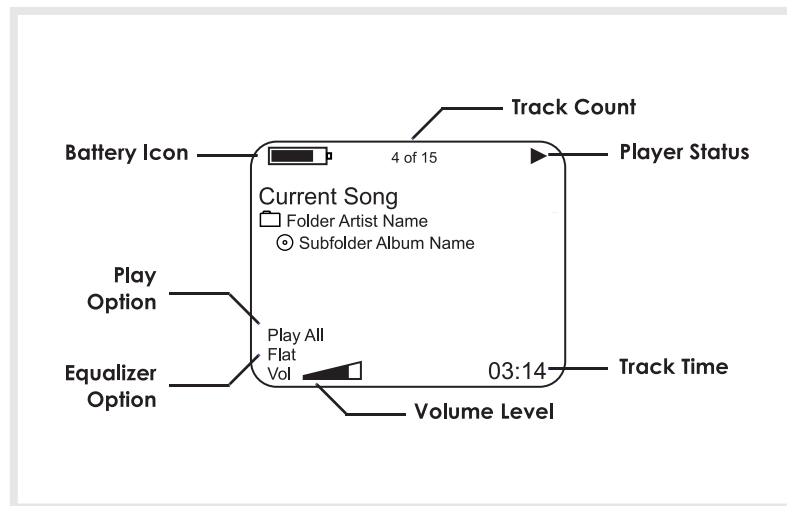
**POWER OFF** To shut off your HD100, move the switch at the top of the player to the **OFF** position. Or, the player will automatically shut off after one minute of inactivity, in Play Mode, but not during FM Radio or Menu Mode. You can change the automatic shut off time by using the player's **Options> Power Off** menu.

**HOLD** You can lock your player so that it will not respond to accidental button pushes while the player is on.






To lock the player, move the switch at the top of the player to the **HOLD** position and the  icon displays on the LCD.


### 5. Description of Player's Display

When you turn on your HD100 the initial, **Play Mode** appears on the LCD and will look like this:



**BATTERY ICON** The battery icon indicates the amount of battery power remaining or that the battery is being charged.

-  Battery is fully charged.
-  Battery is partially discharged.
-  Battery is half discharged.
-  Battery is almost discharged.
-  Battery has about three minutes of power remaining.

 Battery is plugged into a power source and if the icon is animated, the battery is being charged. For more information see *Charge Battery on page 8*.

**TRACK COUNT** Track Count at the top of the LCD shows the current track and the total number of tracks within the selected subfolder (album).

**PLAYER STATUS** Player Status icons indicate the player is in a particular mode:

- ▶ Play icon indicates the player playing the selected track. For detailed information about this topic see *Play Mode on page 20*.
- ⏸ Pause icon indicates the player is paused.
- Ⓜ Record icon indicates the player is recording a voice file as you speak into the built-in microphone. For detailed information about this topic see *Voice Record on page 23*.
- 🔒 Hold icon indicates the player is locked from accidental button presses when the power switch is in the HOLD position; for more information see *Hold on page 9*.

**TRACK TIME** Track time is the elapsed time for the current track.

**EQUALIZER OPTIONS** The HD100 equalizer adjusts bass or treble to one of six options to enhance sound: Flat, Rock, Jazz, Classical, Dance and User. You can change the option by using the **Options > Sound > Eq** menu. For information about changing the option, see *Eq on page 28*.

**VOLUME LEVEL** Use Scroll Wheel to change the volume level when listening to music or a voice recording. As you move the wheel up or down, the volume level between 0 and 30 shows on the LCD.

**PLAY OPTIONS** Play option signifies one of twelve settings to play folders and tracks on your HD100:

- PLY** To play All, Folder, Subfolder or Track.
- RPT** To repeat All, Folder, Subfolder or Track.
- SHF** To shuffle All, Folder or Subfolder.
- INTRO** To play the first nine seconds of all tracks starting at the track you choose until you press the pause button.

You can change the **Options > Play Option** setting, for more information, see *Play Option on page 36*.



## 3 Install RealOne Player Software & Rip Music

RealOne player is third-party software to rip (create) MP3 or WMA files from audio CD.  
 RealOne player software for Windows is included on the installation CD.  
 If you already have a favorite CD ripping program, you can use that instead.

This chapter describes how to:

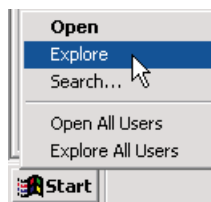
- Install RealOne Player Software on page 12.
- Create Digital Music files page 13.

### 1. Install RealOne Player Software

Using the RealOne Player software, you can create (rip) digital music files from your audio CD.

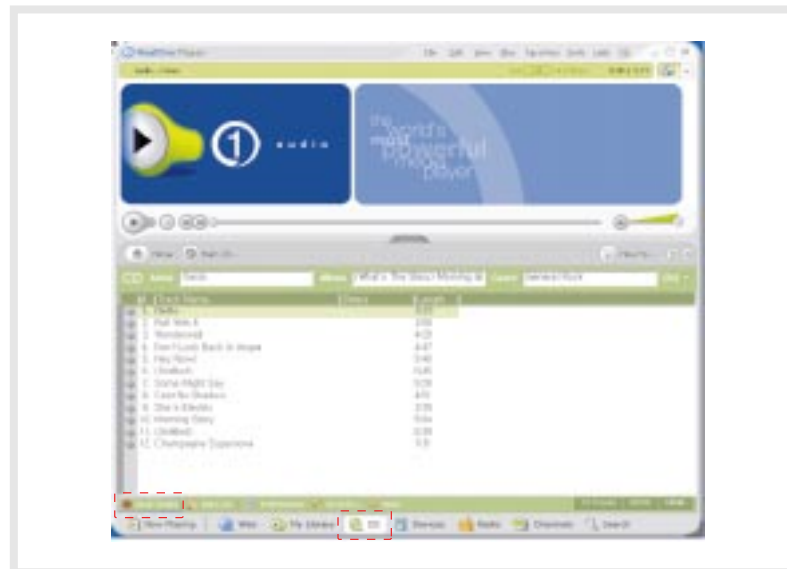
To install the RealOne player software:

1. Insert an installation CD into the PC CD drive.
2. Right-click the Windows **Start** button and select **Explore** from the popup menu.
3. Navigate the installation CD and open the RealOne player folder.
4. Double-click the .exe file to begin installation.
5. The RealOne player **Setup** appears. Follow the setup as instructed. In most cases, the default installation options are suitable.

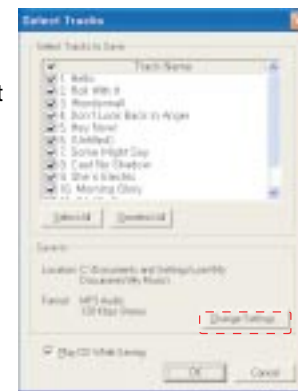


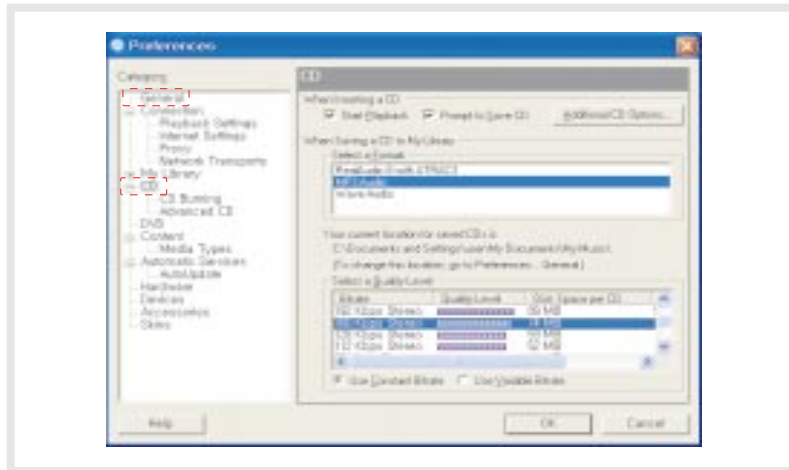
### 2. Create Digital Music Files

1. Insert an audio CD into the PC CD drive.



2. Start the RealOne player program if not already started.
3. Click the **CD** button if music tracks are not automatically listed.
4. Open the Save Tracks window by clicking the **save tracks** button.
5. In the Save Tracks window, select check-boxes to indicate which CD tracks you want to rip.
6. In the Preferences window, select MP3 or WMA for the recording format and quality by clicking the **Change Setting** button.

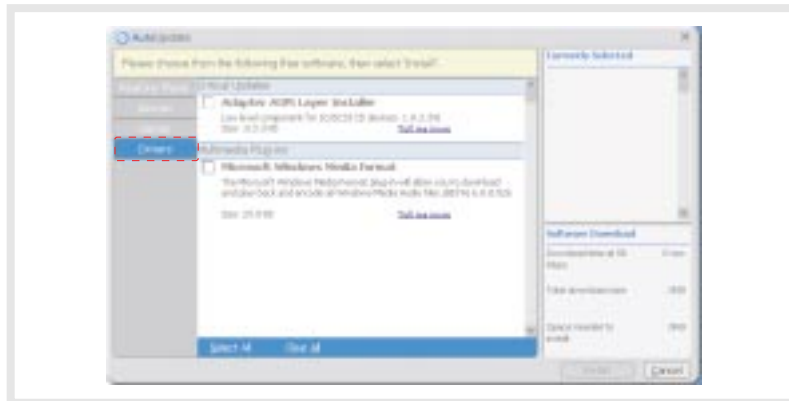




7. Click the **OK** button, you are ready to rip audio CD.

▽ RealOne player in installation CD is the special edition. It is provided MP3 encoding function for the high bit rate(56 ~ 320kbps). Please make sure, if you add another function supplied by the RealOne player plus, you must pay for it.

▽ To use the WMA format, you must have already downloaded the WMA plug-in. Select the **Tools> Check** for update, Autoupdate window appears. Select the **Drivers** tab, click the **install** button after checking the Microsoft Windows Media Format box.



\* Ripped music files are stored in the My Music folder on your C drive. Selecting the **General** folder in the Preferences window, you can specify where the new files will be stored as they are ripped.





## 4 Transfer Music & Data Files

When you connect the HD100 to your PC with the provided USB cable, the PC recognizes it as an external hard drive. To transfer files to and from your player, use the standard Microsoft Windows Explorer software installed with your operating system.

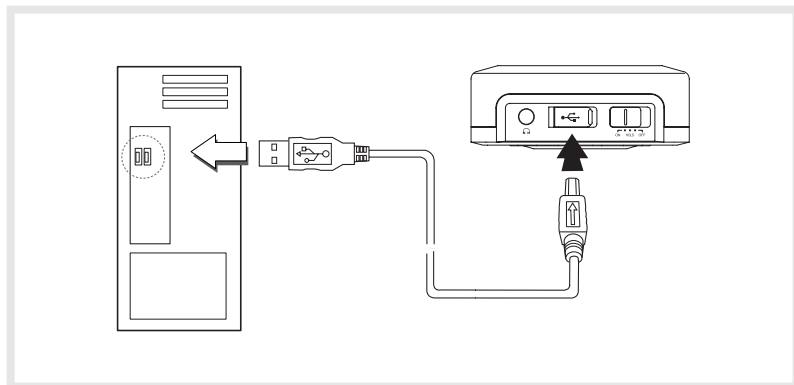
This chapter describes how to:


- Connect the USB Cable on page 16.
- Disconnect the USB Cable on page 17.
- Transfer Music and Data Files with Drive Letter Support on page 17.

### 1. Connect the USB cable

To transfer files to your HD100, you must connect the provided Universal Serial Bus (USB) cable and connect your player to a power source. Ensure your player is **paused** before you connect the cable.

1. Connect the AC adaptor to the player and a power source
2. Insert the larger end of the USB cable into an available USB port on your PC.



3. On the player, open the cover of the USB port (  ) and connect the smaller end of the cable to the player. The USB connector should slide easily into the port; do not use force.

4. The player LCD shows **USB Connected**.

- ▽ Once you're finished transferring files, be sure to Disconnect the USB Cable from the player as described in the next section.

### 2. Disconnect The USB cable

- ▽ It is important to follow this procedure to disconnect the USB cable from your HD100 and PC. If you do not, you risk losing files as they are transferring to your player.

1. Click the **USB icon** on the Windows taskbar usually located at the bottom right of the Desktop.



2. From the popup menu, select the **Stop** command.
3. After a notification message displays, you may disconnect the cable from the player.

### 3. Transfer Music and Data Files with Drive Letter Support

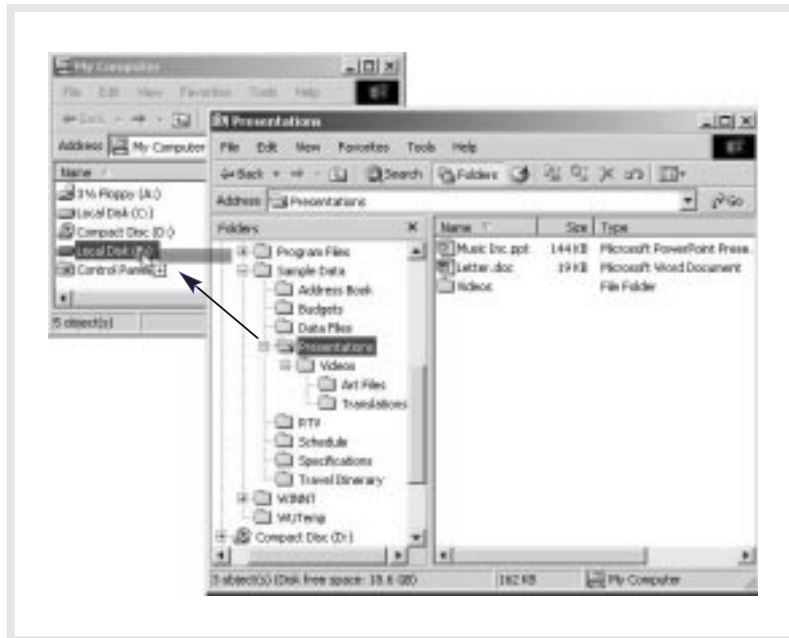
When you connect your HD100 and PC with the provided USB cable, the PC recognizes it as an external hard drive that you can use to transport data files. This means you can drag and drop files using Microsoft Windows Explorer or save a file by selecting the drive letter directly from within a software application. You can even open files directly from the HD100.

- ▽ If HD100 recognize as new hardware in your PC when you connect the USB cable to your player, windows run the Add New Hardware Wizard. Then you insert Installation CD to PC CD drive, select the Driver folder from installation CD when windows searches location of the driver for new device.

● **Windows Explorer**

Use Microsoft Windows Explorer to transfer music and data files between your player and PC:

1. Connect the AC adaptor to your player and a power source.
2. Connect the *USB Cable* to your player and PC.
3. Right-click the Windows **Start button** and select **Explore** from the popup menu. For easier copying, open a second window such as **My Computer**.
4. On your PC drive locate the contents to copy, and drag it to the drive letter representing the HD100, for example:



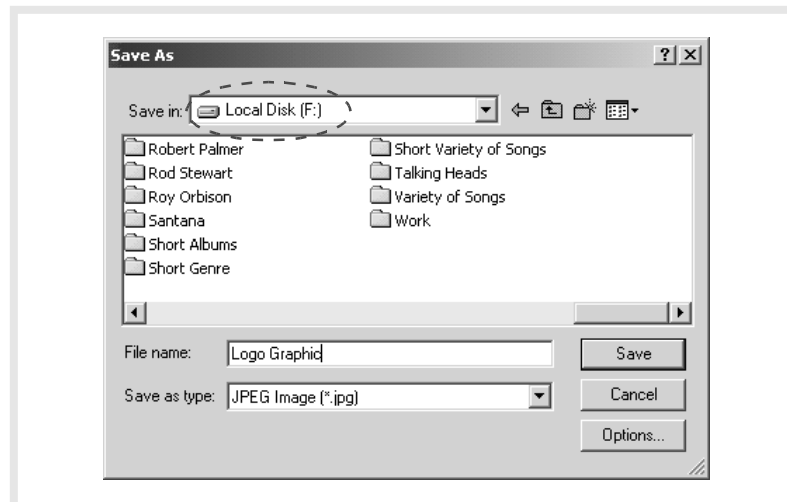
5. Once the process is complete *Disconnect the USB Cable* from the player as described on *page 17*.

.....  
 When copying data files to your player, you can have up to 99 sub-folder levels (if required).  
 .....

● **From a Software Application**

You can also save a file by selecting the drive letter directly from within a software application, for example:

1. Connect the AC adaptor to your player and a power source.
2. Connect the *USB Cable* to your player and PC.
3. Open the application you are using to create the new file.
4. Select the **File > Save** menu and then save the file to the drive letter representing the HD100.



5. Once the process is complete *Disconnect the USB Cable* from the player as described on *page 17*.



# 5 Using Your Player

This section describes how to use the following features on your HD100:

- *Play Mode on page 20.*
- *FM Radio Mode on page 21.*
- *Voice Record on page 23.*

For information about how to use Menu Mode, refer to *Chapter 6: Menu Mode on page 25.*

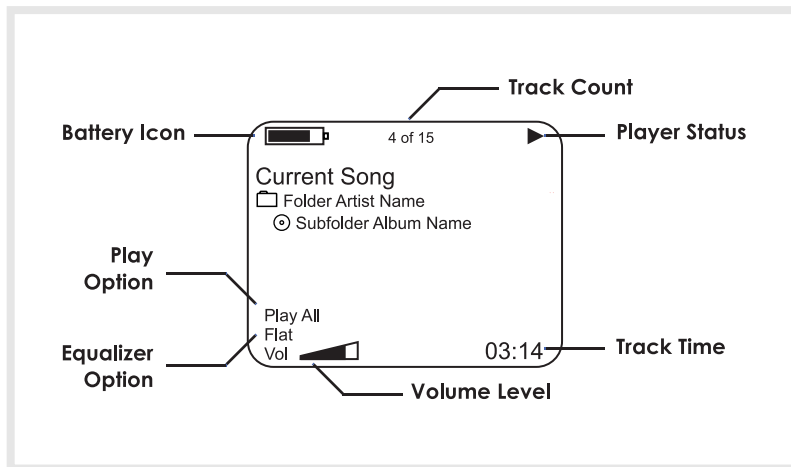
## 1. Play Mode

When you turn on your HD100, the LCD shows the initial **Play Mode** with the last track you listened to before the HD100 was powered off.

Note if you do not press any buttons during this initial or paused state, the player will shut off automatically after a default of one minute or as specified in the **Options > Power Off** menu.

### LCD Description

Once you press ►II to start playback, the LCD shows information like this:



While a track is in this playback state, the Control Panel has the following features:

►II Press this button to pause or resume playback.

▼ To go to the next track, press and release this button.

To fast forward the current track, press and hold this button and release at the desired track time.

▲ To go to the beginning of the current track after 5 seconds of playing the current track, press and release this button.

To go to the beginning of the previous track before 5 seconds of playing the current track, press and release this button.

To rewind the current track, press and hold this button and release at the desired track time.

**SCROLL WHEEL** Move the Scroll Wheel up or down to increase or decrease the volume between 0 and 30.

## 2. FM Radio Mode

You can use your HD100 to listen to your favorite FM radio stations. FM Radio Mode includes features to tune and seek stations as well as set up to 12 favorite channels.

This section describes how to:

- *Use the FM Radio.*
- *Store an FM Radio Preset on page 22.*
- *Select a Channel Preset on page 23.*

▼ **The Power Off features does not apply in FM Radio Mode, therefore, remember to turn off your player when not in use to conserve battery power.**

● **Use the FM Radio**

Press the **Mode** button to toggle from Play Mode to **FM Mode**.

Attach the earphones to the player to improve reception. Then use the Control Panel and tune to an FM station or select a Preset.



In FM Radio Mode, the Control Panel has the following features:

**▲** Press to tune backward by a frequency of 200KHz. Or press and hold this button to seek backward and automatically stop at a station with good reception.

**▼** Press to tune forward by a frequency of 200KHz. Or press and hold this button to seek forward and automatically stop at a station with good reception.

**SCROLL WHEEL** Move the Scroll Wheel up or down to increase or decrease the radio volume between 0 and 30.

**SCROLL WHEEL PRESS** Press and hold the wheel to display the FM Presets list.

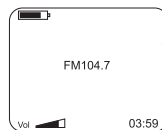
**MODE** Press to exit FM Mode and go back to Play Mode.

If you wish to change the size of searching step for FM frequency, see the methods described in FM Step Size on page 39.

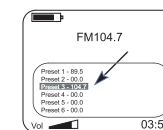
● **Store an FM Radio Preset**

You can store up to 12 of your favorite radio stations as Presets and use them to quickly tune to a station.

1. Press the **Mode** button to go to **FM Radio Mode**.
2. Attach the earphones to the player to improve reception.
3. Use the **▼** and **▲** buttons to tune to a radio station.
4. Press the Scroll Wheel to display the presets list.



5. Highlight the preset number you want to use for the current station.



6. To save the station in the selected preset number, press and hold the Scroll Wheel.

7. If desired, tune to another station and repeat from Step 5 or press the Back button to hide the preset list.

● **Select a Channel Preset**

To select and listen to a radio preset:

1. In FM Mode press and hold the Scroll Wheel to display the preset list.
2. Highlight a preset and press the Scroll Wheel to select it.

If you wish to manually tune to another station, see the methods described in Use the FM Radio on page 22.

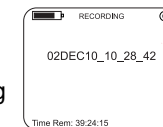
**3. Voice Record**

You can use the Voice Record feature to create a digital voice recording by speaking into the internal microphone located near the Menu button.

Voice recordings are stored in WAV format and require approximately 1MB of storage per minute. The HD100 comes with 20GB of total storage space; as little as 1 GB can hold over 16 hours of voice recordings.

● **Create Recording**

1. To begin voice recording make sure you are in Play mode. *Press and hold* the **⊙** button.



You will notice the LCD changes to show the recording progress including an **⊙** icon and a timer.

2. Speak clearly and keep an adequate distance from the internal microphone near the Menu button.
3. To pause and resume during recording, use the **▶||** button.
4. To end recording, press the **⊙** button.

The voice recording is named with the date and time the recording commenced.

### ● Playback Recording

Once you end the recording, the voice file is immediately displayed on the LCD.



You can also access recordings at any time by using the **Recordings** menu or **Music > My Recordings** menu.

Press the **▶||** button to listen to the recording.



During playback, the Control Panel has the following features:

- ▶|| Press to pause or resume playback.
- ⊙ Press and hold to start a new voice recording.
- ▲ Press to move to the previous voice track or press and hold to rewind.
- ▼ Press to move to the next voice track or press and hold to fast forward.

**SCROLL WHEEL** Move the Scroll Wheel up or down to increase or decrease the radio volume between 0 and 30.

**MODE** Switch between Play and FM Radio Mode.

**MENU** Used to display the Main Menu.

## 6 Menu Mode

You can use the Menu feature on your HD100 to navigate folders and tracks, navigate Recordings, and change player operations such as the LCD appearance, equalizer and sound options.

Access the Main Menu by pressing the **Menu** button. Note, at any time during selection, you can press the **Back** button to return to the previous menu, or press the **Menu** button to cancel menu mode.

### 1. Overview

The below table summarizes the menu selections; pages that follow describe in detail how to use each option. Note, an asterisk (\*) or a number next to an option denotes the factory default setting for that option.

*MUSIC MENU ON PAGE 26*

Folder Artist List      Subfolder Album List Track List

*RECORDINGS MENU ON PAGE 27*

Voice File List

*OPTIONS MENU ON PAGE 28*

<i>Sound page28</i>	<i>Eq</i>	* Flat Rock Jazz Classical Dance	
	<i>My EQ</i>	Five Frequency Bands	0 +5 to -5
	<i>SRS WOW Effect</i>	* On Off <i>SRS Level</i> <i>TruBass Level</i> <i>TruBass Spkr Size</i>	7 Levels 1 to 10 7 Levels 1 to 10 * Small Medium Large Headphone Speaker
<i>Display page 33</i>	<i>Backlight</i>	* Always Off 1 to 10 Always On	
	<i>Contrast</i> <i>LCD Scroll</i>	0 -5 to +5 Slow * Medium Fast	
<i>Play Option page 36</i>		* Play All, Folder, Subfolder, Track Repeat All Folder, Subfolder, Track Shuffle All, Folder, Subfolder Intro	

- Power Off page 36 Always On  
1 1 to 10 minutes
- Output page 37 \* Headset  
Line out
- Mic Sensitivity page 38 \* Low  
Mid  
High
- FM Step Size 39 \* 200KHz  
50KHz

DISK TOOLS MENU ON PAGE 40  
View Disk Space Usage  
Reconcile Music  
Format Hard Drive

ABOUT MENU ON PAGE 42  
View Firmware Version

## 2. Music Menu

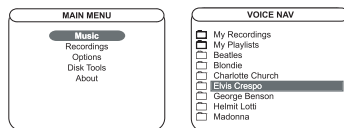
You can use the Music menu to navigate folders and tracks to select what you want to play next without interrupting music you are currently listening to. Use the Scroll Wheel to proceed through one or all levels of hierarchy:

- List of Folders (usually artist name)
- List of Subfolders (usually CD [album] name)
- List of Files (usually track name)

At any point during menu navigation, you can press the Back button to go to the previous menu or press the Menu button to exit menu mode.

To navigate music by using the Music menu:

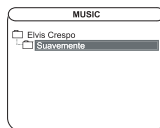
1. Press the **Menu** button to display the Main menu and then press Scroll Wheel to select **Music**.



2. From the list, highlight a folder and do one of the following:

**PLAY FOLDER** Press the ►|| button to start playing tracks from the highlighted folder.

**SELECT FOLDER** Press the Scroll Wheel to open the folder and continue with the next step.



3. If you selected a folder from the previous step, the LCD will show a subfolder list.

4. Highlight a subfolder and do one of the following:

**PLAY SUBFOLDER** Press the ►|| button to start playing tracks from the highlighted folder.

**SELECT SUBFOLDER** Press the Scroll Wheel to open the subfolder and continue with the next step.

5. If you selected a subfolder from the previous step, the LCD will show a list of tracks.

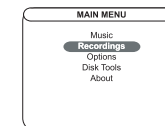


6. Highlight a track and then press the Scroll Wheel or button to start playback.

## 3. Recordings Menu

Use the Recordings menu to display voice recordings and select a voice file for playback.

1. Press the **Menu** button. Highlight **Recordings** and press the Scroll Wheel to select it.



2. From the **folders list**, highlight a voice file.

3. Press the Scroll Wheel or the ►|| button to play the voice file.

For information about creating voice recordings, see *Voice Record on page 23*.

### MY RECORDINGS

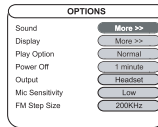


**Recordings** on the **Main Menu** is a shortcut to the voice files. You can navigate to the same content by using the **Music** menu > **My Recordings** folder.



## 4. Options Menu

The Options Menu provides features to change the listening experience with your HD100, the appearance of the LCD, the order music tracks play and other operational behaviors.



This section describes each option and how to set it.

### ● Sound

The Sound option includes features to select one of the six **Eq** presets, specify a **custom five-band equalizer** setting and select and customize the **SRS WOW Effect**.



.....  
 Sound options only apply to music playback, therefore, the **Options > Sound** item does not display when the menu is accessed during Voice Recording playback.  
 .....

### - EQ -

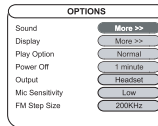
Use the Eq menu to select one of six equalizer options:



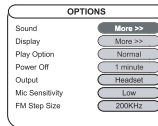
.....  
 The equalizer setting specified in the **Sound > Eq** menu is disabled when the **SRS WOW Effect** is **On**.  
 .....

1. Press the **Menu** button. Highlight **Options** and press the Scroll Wheel to select it.

2. Press the Scroll Wheel to select **Sound**.



3. Highlight **Eq** and press the Scroll Wheel to select it.



4. From the popup menu highlight the equalizer option you want and press the Scroll Wheel to select it.

### Settings include:

**FLAT**  
**ROCK**  
**JAZZ**  
**CLASSICAL**  
**DANCE**  
**USER**

**Flat** is an equal balance of bass and treble. Suitable for **Rock** music.  
 Suitable for **Jazz** music.  
 Suitable for **Classical** or Latin music.  
 Suitable for **Dance** music.  
 Selects the custom listening preference that you specified in the **Options > My EQ** menu described in the next section.

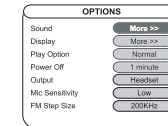
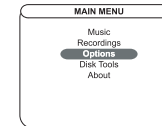
5. Press the **Menu** button to return to play mode or press the **Back** button to return to the previous menu.

### - MY EQ -

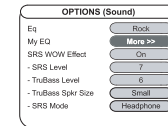
With the My EQ option you can create one customized equalizer setting by adjusting five bass and treble frequency bands. You can then select it from the **Sound > Eq > User** menu described in the previous section.

1. Press the **Menu** button. Highlight **Options** and press the Scroll Wheel to select it.

2. Press the Scroll Wheel to select **Sound**.



3. Highlight **My EQ** and press the Scroll Wheel to select it.



4. The LCD shows the five frequency bands. Low(er) bands represent bass frequencies and the High(er) bands represent treble frequencies.

5. Highlight the frequency you want to change and press the Scroll Wheel to select it.

6. Highlight a value from -5 to +5 and press the Scroll Wheel to select it.





A higher the value provides more emphasis on that band. For example, selecting a value of +5 in the Higher Frequency Band emphasizes treble frequencies to the maximum amount during music playback.

- Repeat Step 5 and 6 to specify other equalizer bands.
- When you complete setting the bands, press the **Menu** button to return to play mode or press the **Back** button to return to the previous menu.

### - SRS WOW EFFECT -

Your HD100 includes SRS WOW audio technology from SRS Labs, Inc. WOW makes up for the limitations inherent in headphones and smaller speakers and improves your listening experience by providing panoramic three-dimensional audio and enhanced bass.

SRS is featured in fine home theatre systems, audio products and computer applications. The enriched results of WOW are particularly noticeable in digitally compressed formats such as MP3 and WMA.

The WOW technology primarily consists of two aspects: SRS and TruBass. You can adjust the **SRS Level** and **TruBass** Level individually to your preference. If you are using external speakers to listen to music, you can further fine-tune the settings by changing the **TruBass Spkr Size** and **SRS Mode**.

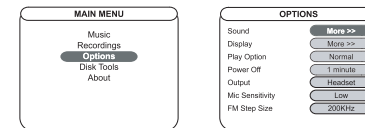


When the SRS WOW Effect is On, the equalizer setting specified in the Sound > Eq menu is disabled.

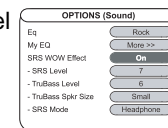
The following section describes each setting and how to change it.

### - On & Off -

- To turn the SRS WOW Effect on or off, press the **Menu** button.
- Highlight **Options** and press the Scroll Wheel to select it.
- Press the Scroll Wheel to select **Sound**.



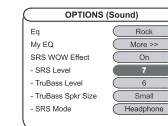
- Highlight **SRS WOW Effect** and press the Scroll Wheel to select it.
- From the **popup** menu, highlight **On** or **Off** and then press the Scroll Wheel to select your choice.



### - SRS Level -

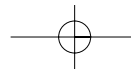
When the *SRS WOW Effect* is **On**, the SRS aspect of WOW technology enhances audio to provide a wide, three-dimensional listening experience. To adjust the amount of SRS:

- Select the **Options > Sound** Menu.
- Highlight **SRS Level** and press the Scroll Wheel to select it.



- From the **popup** menu, highlight a value from **0** to **10** and then press the Scroll Wheel to select your choice. A higher value provides more of the 3D effect.

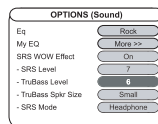




**- TruBass Level -**

Using the original audio source and applying psychoacoustical audio techniques, the TruBass aspect of WOW technology enhances performance of lower bass frequencies producing a deep, rich bass listening experience. To adjust the amount of TruBass:

1. Select the **Options > Sound** Menu.
2. Highlight **TruBass Level** and press the Scroll Wheel to select it.



3. From the **popup** menu, highlight a value from **0** to **10** and then press the Scroll Wheel to select your choice. A higher value provides more TruBass.

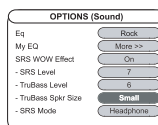
**- TruBass Spkr Size -**

Speaker sizes and headphones have physical limitations in producing low bass frequencies. However, TruBass can restore the perception of these bass frequencies through its patented processing techniques.

The **TruBass Spkr Size** setting works with the TruBass Level you specified in the previous section. The default is set to Small which is suitable for most headphones such as the ones provided with your HD100.

For larger headphones or if you connect your HD100 to external speakers, increase the **TruBass Spkr Size** as follows:

1. Select the **Options > Sound** Menu.
2. Highlight **TruBass Spkr Size** and press the Scroll Wheel to select it.



3. From the popup menu, highlight a value and then press the Scroll Wheel to select it.

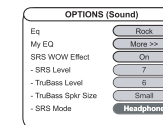


When connected to external speakers, also change the SRS Mode described in the next section. If you wish to use the volume controls of the external system, also change the Output to Line out (described on page 37).

**- SRS Mode -**

If you are using your HD100 to listen to music with external speakers such as with a home stereo system, also change the SRS Mode:

1. Select the **Options > Sound** Menu.
2. Highlight **SRS Mode** and press the Scroll Wheel to select it.



3. From the **popup** menu, highlight a value and then press the Scroll Wheel to select it.

**- Finish -**

When you complete setting the SRS WOW Effects you want, press the **Menu** button to return to play mode or press the **Back** button to return to the previous menu.

**● Display**

Display options are used to specify the duration of **Backlight** illumination, the amount of **Contrast** on the LCD and the **Scroll** rate of long music file names when they are displayed on the LCD.

**- BACKLIGHT -**

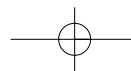
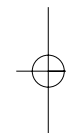
Backlighting is helpful to illuminate the LCD during low light situations. Backlighting then automatically turns off after a default five seconds if no keys are pressed on the player.



Note, you can conserve battery power by setting a lower duration or setting Backlight to Off.

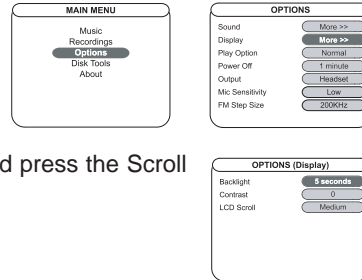


Backlight does not illuminate after you start a voice recording, regardless of the option selected.



To change the backlight duration:

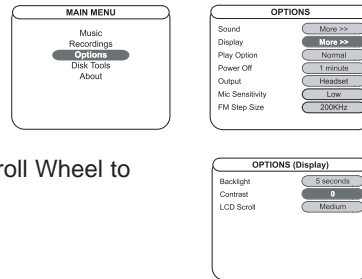
1. Press the **Menu** button. Highlight **Options** and press the Scroll Wheel to select it.
2. Highlight **Display** and press the Scroll Wheel to select.
3. With the **Backlight** setting highlighted press the Scroll Wheel to select it.
4. From the **popup** menu, highlight the value you want and press the Scroll Wheel to select your choice.
5. Press the **Menu** button to return to play mode or press the **Back** button to return to the previous menu.



### - CONTRAST -

To improve viewing on the LCD, you can use the Contrast setting and make the LCD background lighter or darker.

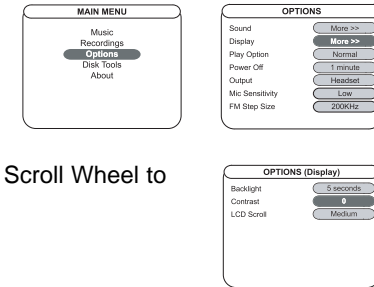
1. Press the **Menu** button. Highlight **Options** and press the Scroll Wheel to select it.
2. Highlight **Display** and press the Scroll Wheel to select.
3. Highlight **Contrast** and press the Scroll Wheel to select it.
4. From the **popup** menu, highlight the value you want and press the Scroll Wheel to select your choice.
5. Press the **Menu** button to return to play mode or press the **Back** button to return to the previous menu.



### - LCD SCROLL -

When you play a track, if the file name does not fit on the LCD, the name animates across the LCD. The LCD Scroll setting specifies the speed of this animation.

1. Press the **Menu** button. Highlight **Options** and press the Scroll Wheel to select it.
2. Highlight **Display** and press the Scroll Wheel to select.
3. Highlight **LCD Scroll** and press the Scroll Wheel to select it.
4. From the **popup** menu, highlight the value you want and press the Scroll Wheel to select your choice.
5. Press the **Menu** button to return to play mode or press the **Back** button to return to the previous menu.

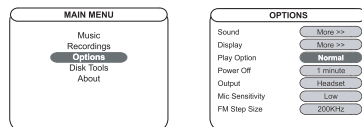


● **Play Option**

The Play Option specifies how and which tracks are played back, for example, sequentially, repetitively or shuffled randomly.

1. Press the **Menu** button. Highlight **Options** and press the Scroll Wheel to select it.

2. Highlight **Play Option** and press the Scroll Wheel to select.



3. From the **popup** menu, highlight the setting you want and press the Scroll Wheel to select it.


The setting remains in effect until you press the button or select another option. Play Options include the following settings:

- PLY** To play All, Folder, Subfolder or Track.
- RPT** To repeat All, Folder, Subfolder or Track.
- SHF** To randomly shuffle All, Folder or Subfolder.
- INTRO** To play the first nine seconds of All tracks starting at the track you choose until you press the pause button.

4. Press the **Menu** button to return to play mode or press the **Back** button to return to the previous menu.

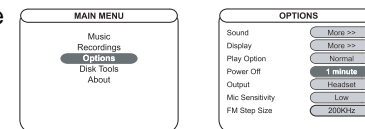
● **Power Off**

The Power Off option specifies if your player is to automatically turn off when the player is inactive, that is, not playing tracks. The more quickly your player turns off after inactivity, the longer the battery charge will last.

 .....  
Automatic power off is disabled in Radio and Menu Mode.  
.....

1. To change the Power Off option, press the **Menu** button. Highlight **Options** and press the Scroll Wheel to select it.

2. Highlight **Play Option** and press the Scroll Wheel to select.



3. Highlight **Power Off** and press the Scroll Wheel to select it.

4. From the **popup** menu, highlight the setting you want, that is, **Always On** or **1 to 10** minutes and then press the Scroll Wheel to select it.

5. Press the **Menu** button to return to play mode or press the **Back** button to return to the previous menu.

● **Output**

You can use the HD100's Earphone / Line Out Jack to output sound to a headset, home stereo system or any system that accepts auxiliary input from an RCA-compatible system.

By default, the option is to output to **Headset**. When you are listening to the player with this option, you use the scroll wheel to control the volume level.

When outputting to an external system, if you wish to control the volume by using the external system, you must change the option to **Line out**.

To connect your HD100 to a home stereo system with external speakers and volume control, use the provided RCA Audio Cable and on your player, set the **Options > Output** menu to Line out:

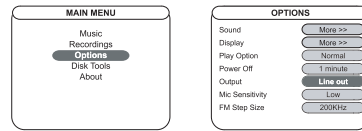
- **CONNECT RCA CABLE** -

1. Connect the small end of the cable to the Earphone / **Line Out Jack** at the top of the player.
2. Connect the cables at the other end to the left and right **RCA Input Jacks** on your home stereo system. If you need more information about how to connect it correctly, refer to your stereo system instructions.

- **CHANGE OUTPUT OPTION** -

3. On the player, press the **Menu** button. Highlight **Options** and press the Scroll Wheel to select it.

- Highlight **Output** and press the Scroll Wheel to select it.



- The popup menu displays two settings: **Headset** (for earphones) and **Line** for an external system). Highlight the setting you want and press the Scroll Wheel to select it.

Press the **Menu** button to return to play mode or press the Back button to return to the previous menu.



.....

If you are using the *SRS WOW Effect*, change the settings to reflect the Output option you choose. For more information, see *TruBass Spkr Size on page 32* and *SRS Mode on page 33*.

.....

### ● Mic Sensitivity

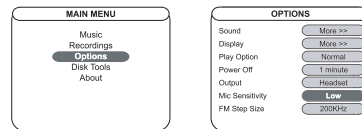
The HD100 includes a built-in, omnidirectional microphone located near the Menu button. Omnidirectional, also called nondirectional, means that the microphone picks up sounds from all directions.

The microphone is used to create voice recordings in *Voice Record mode*.

The microphone sensitivity option specifies the level of microphone reception. To change microphone sensitivity:

- Press the **Menu** button. Highlight Options and press the Scroll Wheel to select it.

- Highlight **Mic Sensitivity** and press the Scroll Wheel to select it.



- The popup menu displays three settings:

**LOW** Use the Low setting if there is a significant amount of background noise in the environment where you are using your HD100.

**MID** Use the Mid setting if you predominately use the microphone for Voice Recording.

**HIGH** The High setting is effective to record a speaker that is not speaking directly into the microphone, that is, more than one arm's length from the HD100. For example, to record a person giving a presentation in a small conference room.

- Highlight the option you want and press the Scroll Wheel to select it.

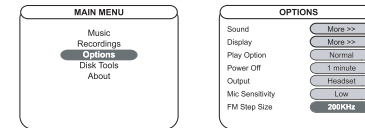
- Press the **Menu** button to return to play mode or press the **Back** button to return to the previous menu.

### ● FM Step Size

FM step size option specifies the size of searching step for FM frequency using the **and** buttons in FM Radio Mode.

- Press the Menu button. Highlight Options and press the Scroll Wheel to select it.

- Highlight FM Step Size and press the Scroll Wheel to select it.



- The popup menu displays two settings: 200KHz and 50KHz

- Highlight the option you want and press the Scroll Wheel to select it.

- Press the Menu button to return to play mode or press the Back button to return to the previous menu.

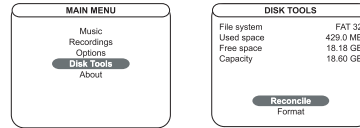
## 5. Disk Tools Menu

The Disk Tools menu displays information about disk space usage and also provides features to Reconcile or Format the hard drive in your HD100.

### ● Disk Space Usage

To view how much space is used or available on your player:

1. Press the **Menu** button. Highlight **Disk Tools** and press the Scroll Wheel to select it.

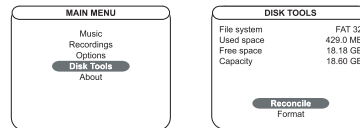


2. Press the **Menu** button to return to play mode or press the **Back** button to return to the previous menu.

### ● Reconcile Music

If you can't find music files or folders that are already saved in your HD100, please, Use the Reconcile Menu for re-indexing.

1. Press the **Menu** button. Highlight **Disk Tools** and press the Scroll Wheel to select it.



2. Highlight **Reconcile** and press the Scroll Wheel to select it.
3. A message displays on the LCD; to continue the reconciliation, highlight and select **Yes**.
4. Once the process is complete, the HD100 returns to Play mode.

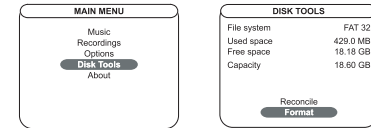
### ● Format Hard Drive

Like formatting a disk on a computer, you can reformat your HD100's hard drive by using the Disk Tools Menu on the player.

▽ This process removes everything on your player and **files cannot be recovered**.

To format your HD100's hard drive and permanently remove all existing folders and files:

1. Press the **Menu** button. Highlight **Disk Tools** and press the Scroll Wheel to select it.



2. Highlight **Format** and press the Scroll Wheel to select it.
3. A message displays on the LCD; to continue the formatting, highlight and select **Yes**. To cancel the process, select **No** or press the **Back** button.
4. Another message displays on the LCD; highlight and select a format type:

**QUICK** Removes files without checking for bad sectors on the disk.  
**THOROUGH** Removes files and checks the entire disk for bad sectors.

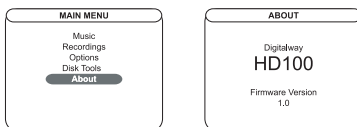


.....  
 To cancel the process at this point, you can press the **Back** or **Menu** button.  
 .....

5. The formatting is complete in about 1 minute for a Quick format and up to 15 minutes for a Thorough format.

## 6. About Menu

The HD100 is operational via firmware programmed into the player. From time to time firmware updates are available on the Digitalway website and can be installed. The About menu displays the current firmware version on your player.



The version number is a useful reference so that you can choose which version(s) to upgrade to.



Firmware updates are made available on the **Digitalway** website a [www.mpio-peros.com](http://www.mpio-peros.com).

Instructions about how to upgrade the player firmware will be included with the upgrade package when it is available for download.



## Troubleshooting & Specifications

**This chapter describes the safety precautions you should take when using your player, describes how to solve common issues you may experience, and lists technical specifications, warranty and service information.**

### 1. Safety Precautions

- ▽ Do not drop your player or leave it under heavy objects.
- ▽ Do not allow liquids to come into contact with your player. If this happens wipe the player with a dry cloth.
- ▽ Do not leave the unit where it will be subjected to prolonged exposure to direct sunlight, extreme temperatures (such as inside a parked automobile) moisture, vibration, excessive dust, sand and avoid areas with strong magnetic fields.
- ▽ Do not use thinner, alcohol or benzene when cleaning the player.
- ▽ To avoid electrical shock, do not disassemble the case. If your HD100 needs service, contact Digitalway at: [www.mpio-peros.com](http://www.mpio-peros.com)
- ▽ Do not use the earphones with the unit while driving, cycling or operating any motorized vehicle. This could create a traffic hazard and is illegal in many areas. It could also be dangerous to play music at a high volume while walking, especially at pedestrian crossings.
- ▽ Prolonged use of earphones at high volume may cause hearing damage or ringing in your ears.
- ▽ Prolonged use of earphones at high volume may cause hearing damage or ringing in your ears.

## 2. Player Issues

### PLAYER DOES NOT WORK

Check that the battery still has power. For more information, see *Charge Battery on page 8 or Battery Icon on page 10.*

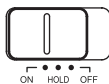
### WHY DID MY HD100 TURN ITSELF OFF?

The HD100 has an automatic shut-off feature to conserve battery power when you aren't using your player and powers off after a default of one minute or as specified in the Options > Power Off menu.

However, this excludes FM Radio mode or Menu mode.

### BUTTONS DON'T WORK

Check if the power switch is in the HOLD position; a lock icon also appears on the LCD. Move the switch to the ON position.



### FILES CANNOT BE TRANSFERRED

Check the USB cable connections between your PC and player. Ensure the player is powered on and attached to the AC Adaptor plugged into a power source.

### MUSIC FILES PLAY IN THE WRONG ORDER

Playback order is as a result of a *Play Option* you selected, for example, if Shuffle All shows on the LCD, the tracks will be shuffled and played back in random order. For more information, see *Play Option on page 36.*

## 3. Sound Problems

### NO SOUND

Check the volume level by using the scroll wheel on your player. Also ensure that the earphone jack is plugged in all the way.

## 4. Problems Connecting to Computer

### CAN'T CONNECT

Make sure to install USB driver before connecting your player and PC.

Windows 98 sometimes fails to recognize the presence of the player. To reconnect Windows to the player, *Disconnect the USB Cable and then re-Connect the USB Cable.*

## 5. Technical Specifications

Your HD100 conforms to the following specifications:

<b>STORAGE HD100</b>	20GB up to 340 hours of audio content (encoded at 128/kbps)
<b>BATTERY</b>	One pre-installed rechargeable Lithium-Ion battery 3.8V and 1500-mAh minimum capacity. Provides up to 11 hours of playing time and recharges in about three hours.
<b>LCD</b>	FSTN-type 3-line LCD, 160 x 128 pixels
<b>DIMENSIONS</b>	Height : 4.39" x Width 2.89" Depth : 1.09", 73.5 mm x 111.5 mm x 27.6 mm
<b>WEIGHT</b>	8.2 ounces; 233 grams
<b>CASE</b>	Aluminum, Plastic, Stainless Steel
<b>TRANSFER SPEED</b>	Up to 8 MBps
<b>S/N</b>	90dB Signal to Noise ratio
<b>THD</b>	< 0.1% Total Harmonic Distortion
<b>EARPHONE OUTPUT POWER</b>	10mW (R: 5mW, L: 5mW)
<b>OUTPUT</b>	20Hz~20kHz
<b>FREQUENCY RANGE</b>	
<b>SAMPLING RATE</b>	MP3 Decoder: 11.025~48kHz, WMA Decoder: 44.1~48kHz
<b>BIT RATES</b>	MP3 Decoder constant or variable bit rates of 16~320kbps, WMA Decoder: 64~196kbps
<b>VOICE RECORDING</b>	16 bits @ 8.01 kHz Mono, WAV file
<b>OPERATIONAL TEMPERATURE</b>	41-104 degrees Fahrenheit (5-40 degrees Celsius)



## ● Computer Requirements

Your computer must meet the following minimum hardware and software requirements to run the Music Explorer software:

- Pentium class processor 133 MHz or faster
- 64 MB RAM
- 20 MB free disk space plus space for ripping music files
- CD-ROM drive
- Windows 2000(Pro)/XP/ME/98 SE
- USB port enabled
- Internet connection for the lookup of artist, album and track information prior to ripping music from an audio CD.

## 6. Approvals

### ● FCC

This equipment has been tested and found to comply with the limitations for a Class B digital device, pursuant to Part 15 of the FCC rules and regulations. These limitations are designed to provide reasonable protection against harmful interference within a residential installation.

This equipment generates, uses, and can radiate radio frequency energy and, if not installed and used in accordance with the instructions, may cause harmful interference to radio communications. However, there is no guarantee that interference will not occur in a particular installation.

If this equipment does cause harmful interference to radio and/or television reception, which can be determined by turning the equipment off and on, the user is encouraged to try to correct the interference by one or more of the following measures:

- Reorient or relocate the receiving antenna.
- Increase the separation between the equipment and the receiver.
- Connect the equipment to an outlet on a circuit different from the one to which the receiver is connected.
- Consult the dealer or an experienced radio and/or television technician for assistance.

### ● Industry Canada

This Class B digital apparatus meets all requirements of the Canadian Interference-Causing Equipment Regulations ICES-003.

Cet appareil numérique de la classe B respecte toutes les exigences du Règlement sur le matériel brouilleur du Canada NMB-003.

### ● CE

Products with the CE Marking comply with both the EMC Directive (89/336/EEC) and the Low Voltage Directive (73/23/EEC) issued by the Commission of the European Community.

Compliance with these directives implies conformity to the following European Norms (the equivalent international standards are in brackets):

- EN55022 (CISPR 22) - Electromagnetic Interference
- EN50082-1 (IEC801-2, IEC801-3, IEC801-4) - Electromagnetic Immunity
- EN60950 (IEC950) - Product Safety



## 7. Limited Warranty

Your HD100 is covered by an Digitalway Corporation Limited Warranty. This product is warranted to be free from manufacturer defects for from the date of purchase. If the product fails or malfunctions due to a manufacturing defect during the warranty period, a refurbished unit of the same make and model or its current equivalent will be provided free of charge. This offer is valid only in the Europe and its territories.

Warranty period: 1 year

⚠ Warning: Changes or modifications to this product not expressly approved by Digitalway Corporation will void the warranty.

### ● NOT COVERED

The following are not covered by this Limited Warranty:

- Damage from misuse, abuse, or neglect.
- Damage from use outside the product's usage parameters.
- Damage from modification or incorporation of other products.
- Damage from repair or replacement of warranted parts by parties other than an Digitalway authorized service provider.
- Damage to or loss of any programs or data.
- Damage resulting from an Act of God.

### ● ONLINE INFORMATION

For on-line documentation and product notes go to **[www.mpio-peros.com](http://www.mpio-peros.com)**. This URL may also contain updates to software.

**Digitalway co., Ltd.**  
**D-92521 Schwarzenfeld, Am Gleis 1, Germany**