

# DIGITAL SOUND ... !!!

## ■ Digital Sound

The MPIO maintains high quality sound at all time.

## ■ Voice Recording

You can store up to 4 hours 26 minutes of voice recording(64MB) from a lecture or interview on your MPIO.

Option!

## ■ Digital Still Camera

You can take pictures anytime anywhere with high quality.

## ■ *What is the "MPIO"?*

The MPIO stands for Multi-Play Internet Audio and it means new generation digital audio player.

You can purchase MP3 files on the Internet and download them directly to your MPIO for CD quality sound without the need of cassette or CD.

## ■ *What is MP3?*

MP3 stand for MPEG 1/2 layer 3.

MP3 files are 1/4 to 1/20 the size of uncompressed audio files.

# CONTENTS

---

## **PREPARING FOR USE**

- Player Features and Controls .....4
- Display Panel.....6
- Inserting the battery.....7

## **LISTENING TO THE SAMPLE MUSIC.....8**

## **HOW TO USE MPIO MANAGER**

- Repeat Segmentation.....9
- Installing Software on PC.....10
- Installing the MPIO Manager.....11
- Connecting the MPIO to PC.....13
- Formatting Internal Memory.....14
- Sending Files to the MPIO.....15
- Erasing Files.....17
- Arranging the Playback Order.....18
- Making MP3 File from an Audio CD.....20

## **USE OF "MODE BUTTON"**

- Function of the Mode button.....22
- Equalizer.....23
- Repeat.....27

- Camera.....28
- Memopad.....29
- Memopad(on the mpio).....31
- Erase(on the mpio).....32
- Language.....33

## **VOICE RECORDING.....34**

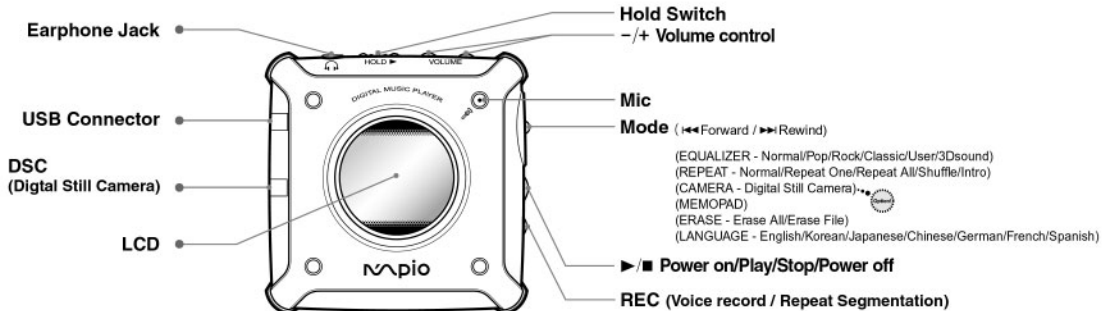
- Listening to the Recorded Voice (On the MPIO).....35
- Listening to the Recorded Voice (On PC).....36

## **OTHERS**

- Downloading Additional Font to the MPIO.....38
- Inserting the SMC(SmartMedia Card).....39
- Safety Precautions.....40
- Technical Specifications.....41
- Troubleshooting.....42
- Safety Information.....43
- Warranty.....45

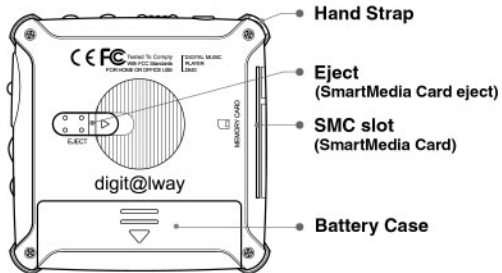
# PLAYER FEATURES AND CONTROLS

## Front Panel



**Note** ◀◀ (Forward) : Pull down and hold to move forward within the current track; pull down and release to go to the next track.  
▶▶ (Rewind) : Push up and hold to move backward within the current track; push up and release to go to the previous track.

## Rear Panel



## Accessories



User's Guide



Installation CD



USB Cable



Earphone



Hand Strap



AA type battery

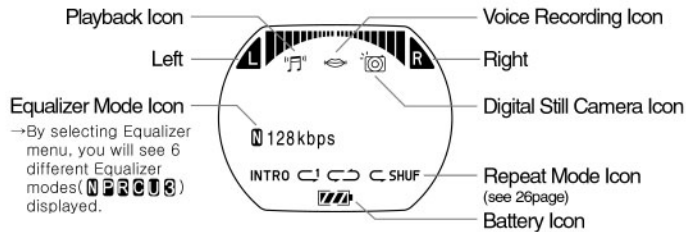


Optional



Digital Still Camera

# DISPLAY PANEL

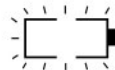


## Battery

- Below icon indicates battery status.



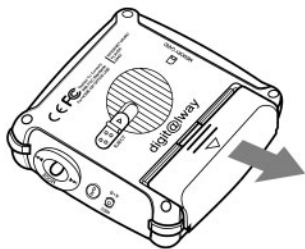
- If the battery icon shows empty and starts twinkling, it indicates the battery is almost gone. (About 2 more hours left before power off.)



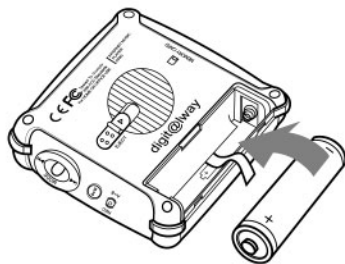
# INSERTING THE BATTERY

## Inserting the Battery into the MPIO

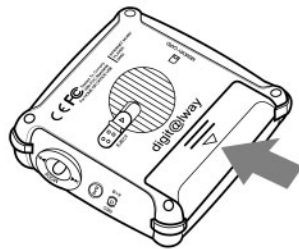
1 Slide the battery cover in the direction of the arrow.



2 Insert "AA" type battery in the correct polarity.

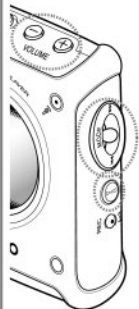


3 Close the cover and slide it as indicated until battery cover latches.



# LISTENING TO THE SAMPLE MUSIC

Your MPIO comes with pre-installed MP3 files for your immediate use.



- 1** Turn the MPIO on by pressing ►/■ (play button).  
◆ Press ►/■ (play button) again to play the first selection.



- 2** Select the file to which you wish to listen by with up ►► /down ◀◀ key.  
◆ Pull (◀◀)MODE button down to listen to the next file.  
◆ Push (►►)MODE button up to listen to the previous file.



- 3** Adjust the volume by pressing the volume(+/-) to your desired level.  
• A level of volume is 00~40.



To stop the MPIO temporarily, press ►/■ (play button).  
Press ►/■ (play button) again to continue playing.

## Note

If you do not press any buttons during in the selection state, MPIO will automatically shut down after 3 minutes.

# REPEAT SEGMENTATION



- 1** Press REC button when playing file.  
A → start time display.



- Repeating time display

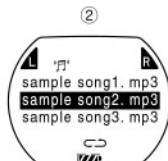
- 2** Again pressing REC button then select end position.  
A ↔ B end time display.



- Repeating time display

- 3** Press stop button then go to stop mode.

- ① Return to play press REC button.
- ② Return to stop press STOP button.





# INSTALLING SOFTWARE ON PC

*Insert the Installation CD into the CD-ROM drive.  
The picture below appears when inserting the CD.*



## ■ MPIO Manager

MPIO Manager is for transferring files between PC and the MPIO. You can download MP3 files and others to your MPIO. Also you can upload any other files (except MP3 and WMA files) to your PC using this software.

## ■ Sample MP3

You can enjoy sample MP3 songs.

## ■ Jukebox

You can listen to MP3 music on your PC and encode your CDs into MP3 file.

## ■ WWW

You can get updated informations and MPIO Manager from our web site.  
(<http://www.mpio.co.kr> / <http://www.digitalway.co.kr>)

## ..... System Requirements .....

- Pentium 133MHz or faster
- 20MB free hard disk space
- USB port
- Windows 98/ME/2000
- CD-ROM drive

# INSTALLING THE MPIO MANAGER

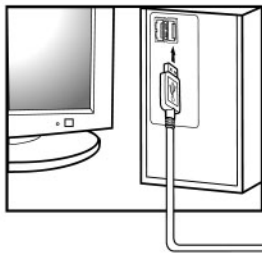
Click the 'next' button on each window.





# CONNECTING THE MPIO TO PC

- 1 Connect the USB cable to the USB port of the computer.



- 2 Turn the MPIO on.  
◆ Before connecting USB cable to the MPIO.



- 3 Connect the other end of the cable to the USB connector of the MPIO.  
◆ "USB CONNECTED" will appear on the LCD of the player.



**Note**

★★★ *The MPIO would be not working if the USB cable is connected while deleting a file, and taking a picture using DSC.*

# FORMATTING INTERNAL MEMORY

## 1 Execute the MPIO Manager.

- Double-click the icon of the MPIO Manager on the desktop.



## 2 Click [Memory] and select [Format Internal Memory] in the pull down menu.



### Note

- Before formatting the internal memory or the **SMC**(SmartMedia Card), connect your MPIO to PC.
- If the **SMC** is installed on the MPIO, you can also format SMC by pressing [Memory] and [Format Memory Card].

### Warning

- Formatting the Internal memory (or SMC) will delete all existing files.

# SENDING FILES TO THE MPIO

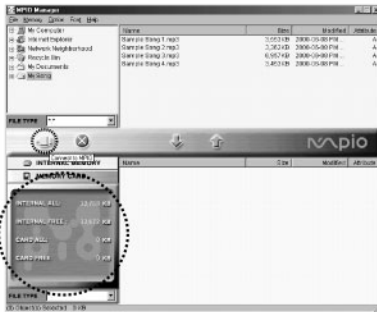
Before sending files to your MPIO, connect the MPIO to PC.

## 1 Execute the MPIO Manager.

- Double-click the icon of the MPIO Manager on the desktop.



## 2 Memory information of MPIO is displayed on the MPIO Manager.



## 3 Select File(s) to download to the MPIO.



4 Click Download icon .

- ◆ MPIO Manager asks. 'Are you sure? Download a current file(s) then click Yes.'



The selected file has been downloaded.

Now you can listen to music with the MPIO after removing the USB cable.



### Note

- Always check that "USB CONNECTED" is displayed on the LCD of the MPIO before sending files.
- The MPIO uses around 1MB of memory for each minute of music. Voice recording occupies about 0.25MB of memory for each minute.
- Digital audio files (MP3 and WMA files) will not be uploaded to PC for copyright protection.
- You can also send files to MPIO by selecting [File] and [Download files] in the pull down menu.

# ERASING FILE

Connect your MPIO to PC and execute the MPIO Manager before erasing.

## On PC

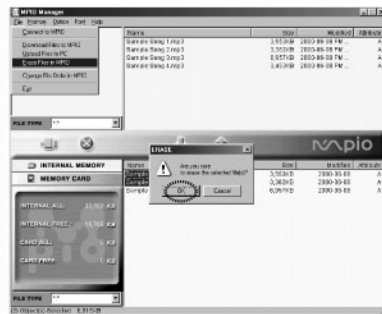
1 Click the file of the MPIO you would like to delete.



2 Click [File] and select [Erase Files in MPIO].



3 Click [OK].



**Note** You can also delete the file by pressing the right button of the mouse and selecting **Erase**.



# ARRANGING THE PLAYBACK ORDER

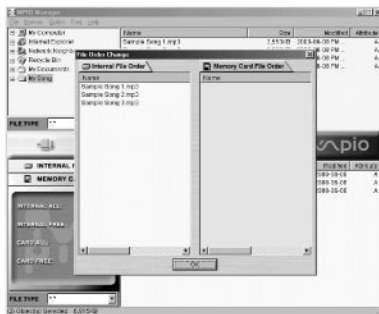
Connect your MPIO to the PC and execute the MPIO Manager as indicated on pages 11~12.

## 1 Execute the MPIO Manager

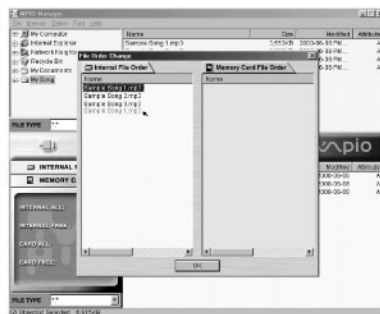
- ◆ Double-click the icon of the MPIO Manager on the desktop.



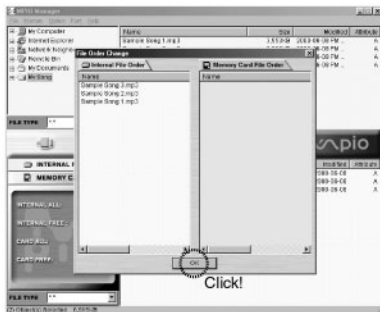
## 2 Click [File] and [Change File order in MPIO].



## 3 Arrange the files by dragging and dropping.



4 Click [OK] after moving files to the desired position.



5 The MPIO Manager displays the file arrangement you made.

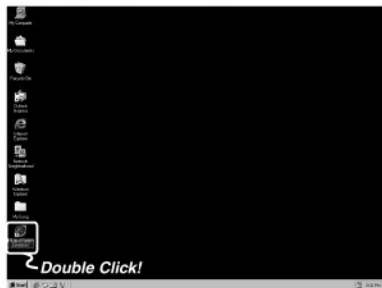


# MAKING MP3 FILES FROM AN AUDIO CD

You must install the MusicMatch Jukebox on your computer before making MP3 files.  
For software installation instruction, please refer to page 10.

## 1 Execute MusicMatch JukeBox.

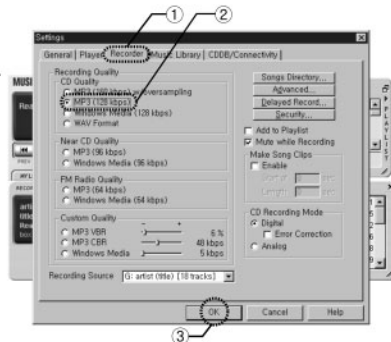
- Double-click the icon of the MusicMatch JukeBox on the desktop or click [Start], [Program] and select [MusicMatch JukeBox].



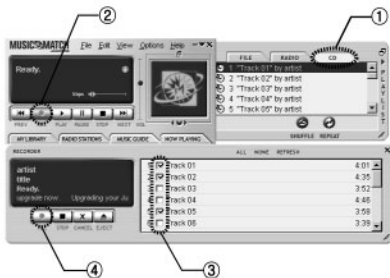
- Insert an audio CD into the CD-ROM drive.

- Click [Option]→[Settings]→[Recorder], you will see window like picture on the left.
- Check the box next to **MP3(128kbps)** for creating a MP3 file equal to CD quality.
- After all setting is done, click **OK** button of window.

## 2 Recorder Setting.



### 3 Select track(s).



- 1 Click 'CD' to see the CD information.
- 2 Click 'record button'. A new window will appear to show all tracks.
- 3 Select the track(s) you would like to convert to MP3 file.
- 4 Click 'record button' below to convert to MP3 file(s).

### 4 Convert to MP3 file(s)

- ◆ Recording status is displayed.



- If you'd like to stop converting, click the 'Cancel' button.
- Converted files are saved in **C:\My Documents\My Music** folder.
- You can listen to the music on your MPIO after downloading files to it.

# FUNCTIONS OF THE MODE BUTTON

By using the **MODE** button, you can set the **MPIO** as you like.

Press **MODE** button then seven menus are displayed on the **LCD** and each menu has under menus: as below.

By selecting '**RETURN**', you can move to upper level.



Press **MODE** button vertically.

**MODE** menu

**EQUALIZER**  
**REPEAT**  
**CAMERA**  
**MEMOPAD**  
**ERASE**  
**LANGUAGE**  
**RETURN**

menu

**NORMAL/POP/ROCK/CLASSIC/USER(BASS,TREBLE,RETURN)/3D SOUND/RETURN**  
**NORMAL/REPEAT ONE/REPEAT ALL/SHUFFLE/INTRO/RETURN**  
**VGA/CIF/RETURN**  
**ERASE ALL/ERASE FILE/RETURN**  
**ENGLISH/KOREAN/JAPANESE/CHINESE/GERMAN/FRENCH/SPANISH/ RETURN**

## **Note**

If there is no operation for function mode with in 3 seconds, **LCD** display will be back to the initialiezed page.

# EQUALIZER

Your MPIO is equipped with a preset equalizer that enables you to choose the most appropriate balance between treble and bass frequencies, according to the type of music you are listening to.



Press MODE button vertically then select **EQ** menu and Press again. You can choose one in the seven **EQ** menu an below.

Icon	Equalizer Menu
<b>N</b>	Normal balance <b>NORMAL</b>
<b>P</b>	Balance suitable for pop music <b>POP</b>
<b>R</b>	Balance suitable for rock music <b>ROCK</b>
<b>C</b>	Balance suitable for classical music <b>CLASSIC</b>
<b>U</b>	Controlling 'BASS/TREBLE' by user. <b>USER - BASS/TREBLE</b>
<b>3</b>	3D Sound mode <b>3D SOUND</b>

- 3D Sound mode have effects for the MP3 files only.  
Copyright QSound Labs, Inc. 2000-2001

## On the MPIO

### ◆ NORMAL mode selection



1 Go to EQUALIZER menu.



2 Select NORMAL mode and return to music decoding state.

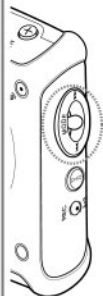


3 NORMAL mode icon (N) is shown on the left corner.



## On the MPIO

### ◆ USER menu selection



1 Select 'USER' and press MODE button vertically.



2 Select 'BASS' or 'TREBLE'.



3 Adjust the value by pressing the up/down key.



4 USER mode icon (Ⓜ) is shown on the left corner.



**Note** Go to the previous mode by selecting the RETURN menu.

- When finish select value then press MODE button vertically to go user menu.



## On the MPIO

### ◆ 3D SOUND mode selection



1 Select 3D SOUND mode.



2 Adjust EXPANSION with ◀◀ (Forward), ▶▶ (Rewind) MODE button.



3 3D SOUND mode icon ( ) is shown on left corner.



● When finish select value then press MODE button vertically to go user menu.

# REPEAT

Your MPIO can automatically repeat all files or an individual file.



1 Go to the **REPEAT** mode.

Icon	Repeat Mode
	Normal : Plays all stored files one time in order.
	Repeat ONE : Repeat the current selected file.
	Repeat All : Repeat all stored files.
SHUF	Shuffle : Plays files in random order.
INTRO	Intro : Plays first 10 seconds for each of the file.

2 Choose one of the five **REPEAT** mode.

Normal



Repeat All



# CAMERA

You can take a picture by connecting digital camera module to the MPIO.

1 Go to CAMERA mode.



2 Select VGA or CIF mode.



## Memory and Image

- VGA : About 250 image can be stored in 32MB embedded memory (Image resolution 640x480)
- CIF : About 700 image can be stored in 32MB embedded memory (Image resolution 352x288)

★★★ **Note** Selecting Digital Camera mode while playing music may cause 1 second playback halt. "CAMERA ERROR !" message on the LCD window may be entered and disappeared.



# MEMO PAD

Your MPIO can display contents of the text file.

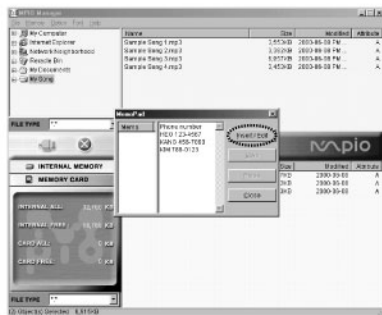
1 [Option]→[MemoPad] click

Type message in the message frame.



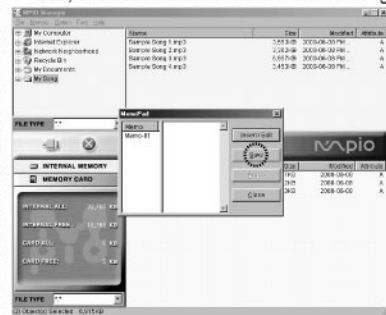
2 Message Input

After typing in, click "Insert/Edit" button.

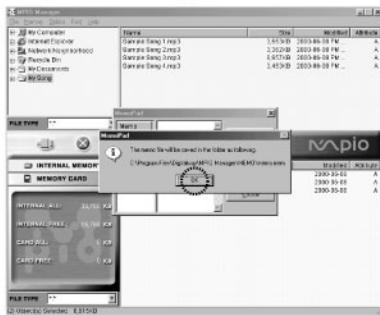


3 Save click

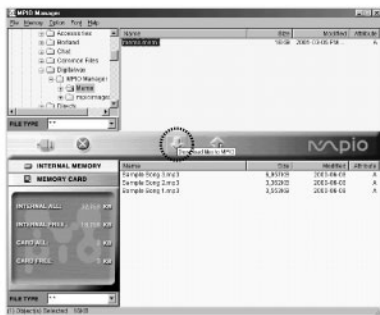
When "Memo-01" is displayed on the left side, click save button to save the message.



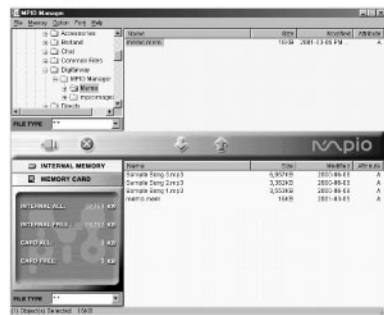
4 Your message will be stored at  
**C : / Program File / Digitalway  
 / MPIO Manager / MEMO.**



5 Download Message  
 Select the file you want to download  
 and click download button.



The file is successfully download to your MPIO.  
 You can find displayed message through MPIO  
 message mode.



## On the MPIO

1 Go to the MEMOPAD menu.



2 Select memo by pressing MODE button.



3 Scroll by ◀◀ (Forward), ▶▶ (Rewind) button.



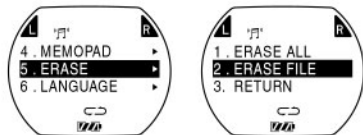
◆ No MESSAGE! will be shown if there no memo file on the MPIO.



**Note** Go to memo by MODE button.

# ERASE(ON THE MPIO)

- 1 Press MODE button vertically and select Erase mode then 'ERASE ALL' or 'ERASE FILE'



- 2 After selecting 'ERASE', choose the file you'd like to erase by push MODE button.



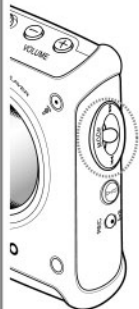
- 3 If you sure to erase file, select Yes.



**Note** Once the file erased from your MPIO, it cannot be restored.

# LANGUAGE

Your MPIO can display selected language on LCD menu.



1 Go to the language mode.



2 Select the language which you wish to use by MODE button (◀◀ Forward / ▶▶ Rewind).





# VOICE RECORDING

1 Press the REC button to start voice recording.



2 To stop recording, press ►/■ (stop button).



► If 'full' is displayed, delete MP3 files or other files in memory for voice recording. (page 32)

► RECORD - It displays recording time.  
REMAIN - It displays remaining recording time.

# LISTENING TO THE RECORDED VOICE (ON THE MPIO)

## On the MPIO

1 Press MODE button vertically twice then recorded wav file(s) is displayed.



2 Select wav file then press.

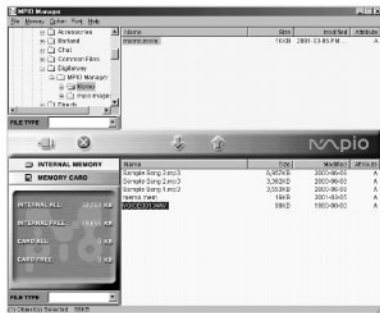


# LISTENING TO THE RECORDED VOICE (ON PC)

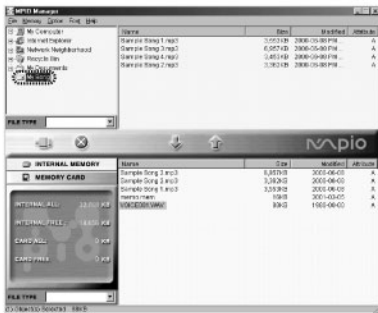
Connect your MPIO to PC and execute the MPIO Manager as indicated on pages 11~12.

## On PC

1 Click the file(s) in the MPIO to which you would like to listen.



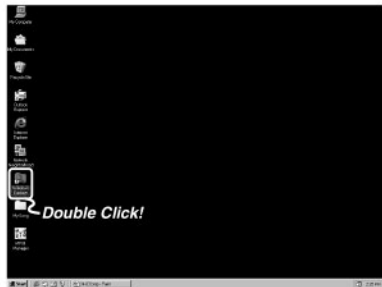
2 Choose the folder in PC which you want to copy the selected voice files.



3 Click Upload button  to upload the file(s).



4 Execute Windows Explorer.



5 Double-click the file(s) you want to listen to.



6 The selected file is played back on the associated program.



# DOWNLOADING ADDITIONAL FONT TO THE MPIO

To display other characters besides English, additional font can be downloaded to the MPIO.

1 Execute the MPIO Manager.



2 Click [Font] and [Download Font to MPIO].



3 Click [OK].



- Optional font file occupies about 2MB of the MPIO memory. Select [Font] and [Erase Font in MPIO], if you want to recover 2MB due to font download.

- Additional file supports following characters.
  - ① Korean
  - ② Japanese
  - ③ Chinese(Traditional)
  - ④ Chinese(Simplified)

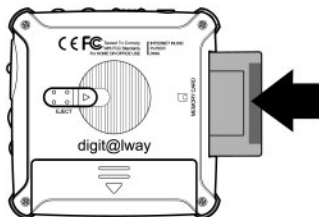
# SMC INSERTING / EJECTING

You can store more music by using the SMC(SmartMedia Card).

★★★ You have to power off the MPIO before inserting or ejecting SMC from the MPIO .

## Inserting SMC

1 Insert the SMC into the SMC Card Slot.



2 The SMC will appear when the MPIO is turned on.

TOTAL : 64MB  
INTERNAL : 32MB  
EXTERNAL : 32MB

## Ejecting SMC

1 Push the SMC eject switch upward.



To send file to the MPIO, you must format the SMC before using it ; refer to page 20.

# SAFETY PRECAUTIONS

*You must read to use the MPIO for a long time.*

- 1 Do not drop your MPIO or leave it under heavy objects.
- 2 Do not allow any liquids to contact the MPIO.
  - If this happens, wipe the MPIO with dry cloth.
- 3 Avoid areas of high humidity, strong magnetic fields, or sources of heat when storing your MPIO.
- 4 Do not use thinner, alcohol, or benzene when cleaning the MPIO.
- 5 To avoid damage to the MPIO, battery always must be taken out when not in use more than 7 days.

# TECHNICAL SPECIFICATIONS

<b>Model</b>	DMG
<b>Memory Capacity</b>	Internal Memory 32/48/64MB
<b>Power</b>	1.5V
<b>Battery</b>	One AA type
<b>LCD</b>	FSTN-type 3line LCD, 128x48pixel
<b>Dimensions (WxHxD)</b>	67.7x67.7x18.5mm / 63.5g (without battery)
<b>Case</b>	Aluminum, Plastic
<b>File Transmission Speed</b>	Up to 4 Mbps
<b>Memory Socket</b>	SMC(SmartMedia Card) 3.3V
<b>Voice Recording</b>	ADPCM format / 128 min in 32MB(256 min in 64MB)
<b>Noise Ratio</b>	90dB
<b>Earphone Output Power</b>	14mW (R:7mW , L:7mW)
<b>Output Frequency Range</b>	20Hz~20KHz



# TROUBLESHOOTING

**1** The software does not work properly.

- Refer to page 17, setting up Environment.

**2** The MPIO does not work or nothing is displayed on the LCD.

- Check the capacity of the battery. One 1.5V AA type battery is required.
- Check the polarity( + and - ) of the battery.

**3** The buttons are not working.

- Check if the Hold Switch is down.  
While the Hold Switch is down,the buttons do not work.

**4** There is no audio produced when the ►/■ button is pressed in MP3 mode.

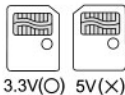
- Check that MP3 files are stored in the internal memory or the SMC.

**5** MP3 files can not be downloaded.

- Check and/or replace the new battery.
- Check the connection between the USB port of your PC and the USB cable.

**6** SMC cannot be inserted into the MPIO.

- Make sure you are using the correct SMC.  
Only 3.3V version cards will work on your MPIO.  
5V version cards will not function correctly.



**7** The files on the SMC can not be recognized.

- MP3 files downloaded hardware from a different may not work on your MPIO.
- Fomat the SMC and copy files again with the MPIO Manager.

# SAFETY INFORMATION

FCC Part 15: This equipment has been tested and found to comply with the limits for a Class B digital device, pursuant to Part 15 of the FCC Rules. These limits are designed to provide reasonable protection against harmful interference in a residential installation.

This equipment generates, uses, and can radiate radio frequency energy and, if not installed and used in accordance with the instructions, may cause harmful interference to radio communications.

However, this notice is not a guarantee that interference will not occur in a particular installation. If this equipment does cause harmful interference to radio or television reception, which can be determined by turning the equipment off and on, the user is encouraged to try one or more of the following measures:

- Reorient or relocate the receiving antenna.
- Increase the distance between the equipment and receiver.
- Connect the equipment to an outlet on a circuit different from that to which the receiver is connected.
- Consult the dealer or an experienced radio/TV technician.

## Modifications

Any changes or modifications not expressly approved by the grantee of this device could void the user's authority to operate the device.

## Compliance

This product conforms to the following Council Directive:

- Directive 89/336/EEC, 92/31/EEC (EMC)

## Declaration of Conformity

Name: Digitalway Co., Ltd.

Address: Joong Pyung B/D(4,6,7F) 64-1, Woomyung Dong, Seccho  
-ku, Seoul, Korea

declares under its sole responsibility that the product

Trade Name: Digitalway Co., Ltd.

Model Number: DMG

has been tested according to the FCC Part 15/CISPR22/95 requirements for Class B devices and found compliant with the following standards

EMI/EMC: AnSI C63. 4, 1992, FCC Part 15 Subpart B

This device complies with part 15 of the FCC Rules.

Operation is subject to the following two conditions;

1. This device may not cause harmful interference, and
2. This device must accept any interference received, including interference that may cause undesirable operation.

# WARRANTY

This MPIO brand product, as configured and distributed by Digitalway Co., Ltd. and delivered new, in the original carton to the original consumer purchaser, is warranted by Digitalway against manufacturing defects in materials and workmanship for following limited warranty period: **One(1) year**

This limited warranty begins on the original date of purchase, and does include transportation, installation, removal, and reinstallation.

Warranty repairs must be performed by Digitalway.

To receive warranty service, the original dated bill of sale must be presented upon request as proof of purchase to Digitalway. Transportation to and from Digitalway is the responsibility of the purchaser.

Digitalway will repair this product, at our option and at no charge, with new or reconditioned parts or will exchange the product with a reconditioned unit if found to be defective during the limited warranty period specified above. The product must be returned during the warranty period with transportation charges prepaid to Digitalway.

Prior to returning any product for warranty service, the purchaser must contact Digitalway for problem determination and service procedures. It is the purchaser's responsibility to secure all programs and data contained in or affected by the product. Digitalway does not warrant uninterrupted or error-free operation of the product, and shall not be liable for the loss or destruction of data or media resulting from the use or

service of this product.

All replaced parts and products become the property of Digitalway and must be returned to Digitalway.

Replacement parts and products assume the remaining original warranty, or ninety (90) days, whichever longer.

Digitalway's obligations respect to software products distributed by Digitalway under the Digitalway brand name are set forth in the applicable end user license agreement. Non-Digitalway hardware and software products are provided on an "AS IS" basis.

However, non-Digitalway manufacturers, suppliers, or publishers may provide their own warranties. This limited warranty covers manufacturing defects in materials and workmanship encountered in normal, noncommercial use of this product and shall not apply to the following, including, but not limited to: damage which occurs in shipment; applications and uses for which this product was not intended; failures or problems which are caused by products or equipment not supplied by Digitalway; accidents, misuse, abuse, neglect, misapplication, fire, water, lighting or other acts of nature; incorrect electrical line voltage, fluctuations or surges; damage caused by improper or faulty installation; improper connection with any peripheral; product alteration or modification; improper or unauthorized repair; cosmetic damage or exterior finish; product will altered serial numbers; failure to follow operating instruction, customer adjustment, maintenance and environment

instructions that are covered and prescribed in the instruction book; Use of non-Digitalway or unauthorized parts, supplies, accessories or equipment that damage this product or result in service problems; failures or problems due to incompatibility with other equipment.

The purchaser is cautioned that product performance is affected by system configuration, software, applications, purchaser data and operator control of the system, among other factors.

The product is considered to be compatible with many system, however it is the purchaser's responsibility to determine the functional implementation. Therefore, suitability of the product for a specific purpose or application is not warranted by Digitalway.

There are no express warranties other than those listed and described above, and no warranties whether express or implied, including, but not limited to, any implied warranties of merchantability or fitness for a particular purpose, shall apply after the express warranty periods stated above, and no other express warranty of guaranty given by any person, firm or corporation with respect to this product shall be binding on Digitalway. Digitalway shall not be liable for loss of revenue of profits, or any other special, incidental or consequential damages caused by the use, misuse or inability to use this product, regardless of the legal theory on such the claim is based. And even if Digitalway has been advised of the possibility of such damages.

Without limiting the foregoing, purchaser assumes all risk and liability for loss, damage or injury to purchaser and purchaser's property and to others and their property arising out of the use, misuse or inability to use this product sold by Digitalway not caused directly by the negligence of Digitalway.

This limited warranty shall not extend to anyone other than the original purchaser of this product, is nontransferable and states your exclusive remedy.

Some states do not allow limitations on how long an implied warranty lasts, or the exclusion or limitation of incidental or consequential damages, so the above limitations or exclusions may not apply to you.

This warranty gives you specific legal rights, and you may also have other rights which vary from state to state. This product is for personal use only, and is only for use in compliance with the limitations of copyright and other laws.

# MEMO



mpio