

DIGITAL SOUND ... !!!

■ Digital Sound

The MPIO maintains high quality sound at all time.

Option!

■ Digital Still Camera

You can take pictures anytime anywhere with high quality.

■ *What is MP3?*

MP3 stand for MPEG 1/2 layer 3. MP3 files are 1/4 to 1/20 the size of uncompressed audio files.

■ *What is the "MPIO"?*

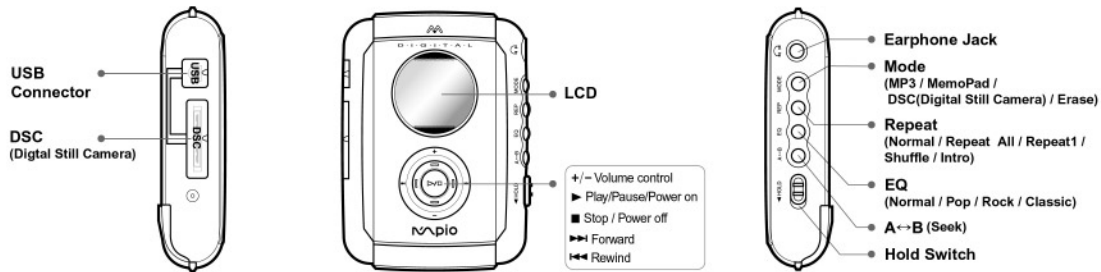
The MPIO stands for Multi-Play Internet Audio and it means new generation digital audio player. You can purchase MP3 files on the internet and download them directly to your MPIO for CD quality sound without the need of cassette or CD.

CONTENTS

■ Player Features and Controls	4
■ Inserting the battery.....	6
■ Listening to music.....	7
■ Repeating Files.....	8
■ Using the Equalizer.....	9
■ Installing Software on PC.....	10
■ The MPIO Manager Installation Progress	11
■ Connecting the MPIO to PC.....	13
■ Formatting Internal Memory.....	14
■ Sending Files to the MPIO.....	15
■ MemoPad.....	17
■ Erasing Files.....	20
■ Arranging the Playback Order.....	22
■ Downloading Additional Font to the MPIO.....	24
■ Inserting the SMC(SmartMedia Card)	25
■ Making MP3 Files from an Audio CD.....	26
■ Safety Precautions.....	28
■ Troubleshooting.....	29
■ Technical Specifications.....	30
■ Safety Information.....	31
■ Warranty.....	32

PLAYER FEATURES AND CONTROLS

Front Panel



Note ▶▶: Press and hold to move forward within the current track; press and release to display next 3 tracks.

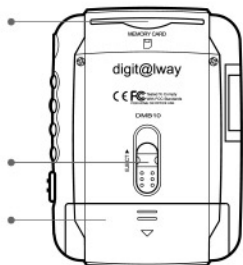
◀◀: Press and hold to move backward within the current track; press and release to display previous 3 tracks.

Rear Panel

SMC(SmartMedia Card)
Slot

Eject Button
(SmartMedia Card)

Battery Case



Accessories



USB Cable



Earphone



User's Guide



Installation CD

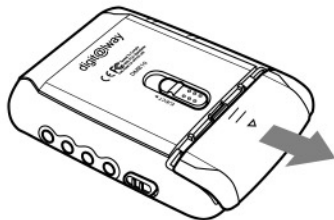


AA Type Battery

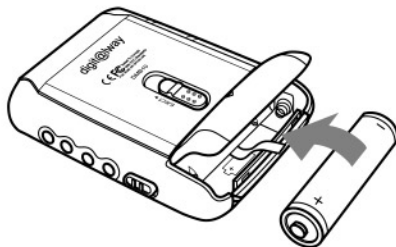
INSERTING THE BATTERY

Inserting the Battery into the MPIO

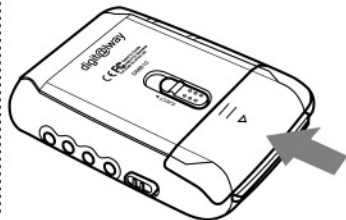
1 Slide the battery cover to the direction of the arrow.



2 Insert "AA" type battery taking care to respect the polarity.



3 Close the cover and slide to the direction as indicated until battery cover latches.



LISTENING TO MUSIC

Your MPIO comes with pre-installed MP3 files for your immediate use.

1 Turn the MPIO on by pressing ►/■.

- ◆ Press ►/■ again to play the first selection.



2 Select the file to which you wish to listen by pressing +/-.
-

- ◆ Press - to go to the next file.
- ◆ Press + to go to the previous file.



3 Adjust the volume by pressing and holding the volume +/– to your desired level when the MPIO is in playing state.



4 Press ■ to stop playing.

- ◆ To turn your MPIO off, press and hold the ■ button for about 2 seconds.



To stop the MPIO temporarily, press ►/■. Press ►/■ again to continue playing.

When the MPIO is in selection state,
[press ►► to go to the next page.
[press ◀◀ to go to the previous page.
When the MPIO is in playing state,
[press ►► to go to the next file.
[press ◀◀ to go to the previous file.
Press ► to play the file you selected.

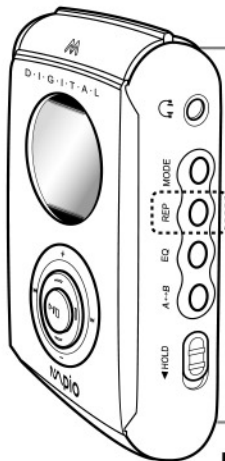
A level of volume is 00~40.

Note

If you do not press any button in selection state, the MPIO will automatically turn itself off after 3 minutes.

REPEATING FILES

Your MPIO can automatically repeat all files or an individual file.



1 Pressing the **REPEAT** button will allow you to perform the following functions.

Icon	Repeat Mode
	Normal : Plays all stored files one time in order.
	Repeat All : Repeat all stored files indefinitely.
	Repeat 1 : Repeat the current selected file.
SHUF	Shuffle : Plays files in random order.
INTRO	Intro : Plays first 10 seconds for each of the file.

2 Continue pressing the **REPEAT** button until the desired repeat mode icon is displayed.



■ Repeating Section function!

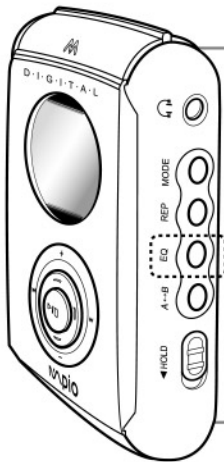
- 1 If you want to listen a specific section,
1) Press the A->B button at the start point.
2) Press it again at the end point.

- 2 If you want to cancel this function,
press the STOP button.



USING THE EQUALIZER

Your MPIO is equipped with a preset equalizer that enables you to choose the most appropriate balance between treble and bass frequencies, according to the type of music you are listening to.



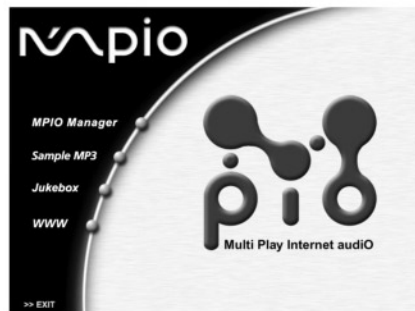
Press the **EQ** button until the required option is selected.
There are four available equalizer setting.



Icon	Equalizer Mode
N	Normal balance
P	Balance suitable for pop music
R	Balance suitable for rock music
C	Balance suitable for classical music

INSTALLING SOFTWARE ON PC

*Insert the Installation CD into the CD-ROM drive.
The picture below appears when inserting the CD.*



■ MPIO Manager

MPIO Manager is for transferring files between PC and the MPIO. You can download MP3 files and others to your MPIO. Also you can upload any other files (except MP3 files) to your PC using this software.

■ Sample MP3

You can enjoy five sample MP3 songs.

■ JukeBox

You can listen to MP3 music on your PC and encode your CDs into MP3 file.

■ WWW

You can get updated informations and MPIO Manager from our web site.
(<http://www.mpio.co.kr> / <http://www.digitalway.co.kr>)

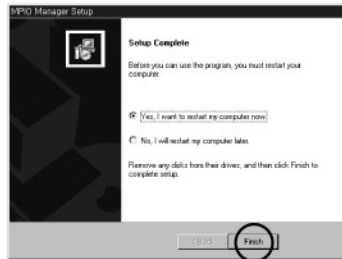
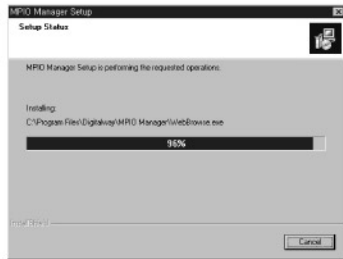
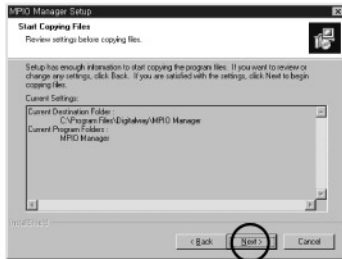
..... System Requirements

- | | | |
|--------------------------------|-----------------------------|------------|
| ■ Pentium 133MHz or faster | ■ 20MB free hard disk space | ■ USB port |
| ■ Windows 98/ME/2000 or higher | ■ CD-ROM drive | |

THE MPIO MANAGER INSTALLATION PROGRESS

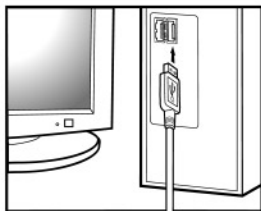
Click the 'next' button on each successive window.





CONNECTING THE MPIO TO PC

- 1 Connect the USB cable to the USB port of your computer.



- 2 Turn the MPIO on and connect the USB cable to your MPIO.



- 3 Connect the other end of the cable to the USB connector of the MPIO.
◆ "USB CONNECTED" will appear on the LCD of the player.



Note

The MPIO would be not working if the USB cable is connected while deleting a file, and taking a picture using DSC.

FORMATTING INTERNAL MEMORY

Before formatting internal memory, turn the MPIO on and connect the MPIO to PC using the USB cable(refer to p13).

1 Execute the MPIO Manager.

- Double-click the icon of the MPIO Manager on the desktop.



2 Click [Memory] and select [Format Internal Memory].




Note

- Before formatting the internal memory or the **SMC**(SmartMedia Card), connect your MPIO to PC.
- If the **SMC** is installed in the MPIO, you can also format SMC by pressing [Memory] and [Format Memory Card].

Warning

- Formatting the internal memory(or SMC) will delete all existing files.

Note

Excute the MPIO Manager, then automatically connect to the MPIO.
If not connect, select **CONNECT** button  (refer to p15).

SENDING FILES TO THE MPIO

Before sending files to your MPIO, turn the MPIO on and connect the MPIO to PC using the USB cable(refer to p13).

1 Execute the MPIO Manager.

- Double-click the icon of the MPIO Manager on the desktop.



2 Click Connect icon on the MPIO Manager.



3 Select File(s) to download to the MPIO.



Note

Excute the MPIO Manager, then automatically connect to the MPIO. If not connect, select CONNECT button like No. 2.

4 Click Download icon .



The selected file has been downloaded.
Now you can listen to music with the MPIO
after removing the USB cable.



You can also select [File] and [Download files to MPIO].

The MPIO Manager detect automatically the MPIO.
The MPIO Manager will not work when you remove
the USB cable to the MPIO.

Note

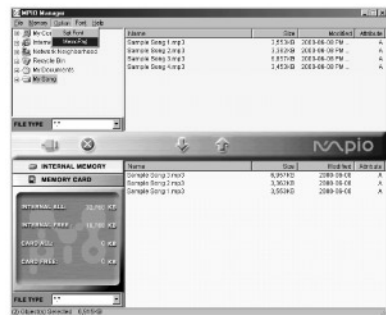
- Always check that "USB CONNECTED" is displayed on the LCD of the MPIO before sending files.
- The MPIO uses around 1MB of memory for each minute of music.(128kbps)

MEMO PAD

Your MPIO can display contents of the text file.

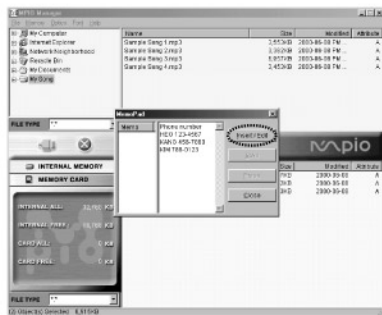
1 [Option]→[MemoPad] click

Type message in the message frame.



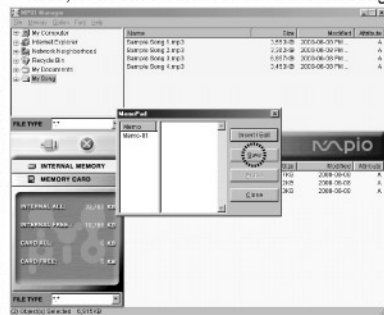
2 Message Input

After typing in, click "Insert/Edit" button.

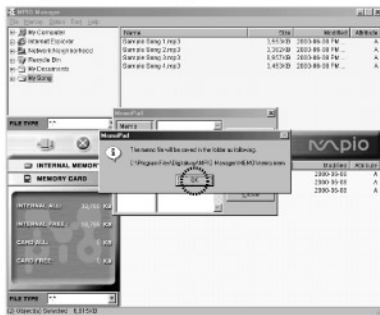


3 Save click

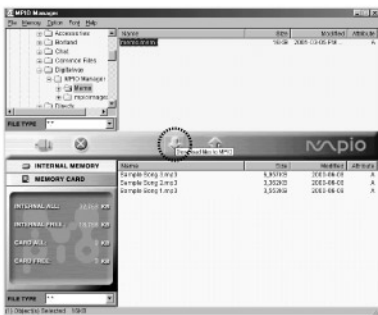
When "Memo-01" is displayed on the left side, click save button to save the message.



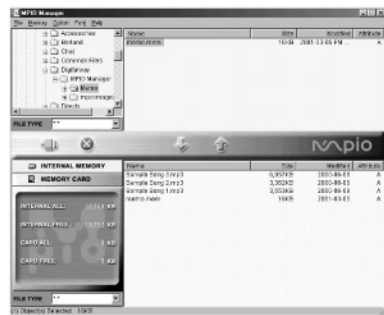
4 Your message will be stored at
**C : / Program File / Digitalway
 / MPIO Manager / MEMO.**



5 Download Message
 Select the file you want to download
 and click download button.



The file is successfully download to your MPIO.
 You can find displayed message through MPIO
 message mode.



On the MPIO

1 Press the MODE button to change MEMO menu.



2 Select MEMO by pressing MODE button.



3 Scroll by ►► / ◀◀ button.



◆ When you change the operation mode the mode change to the "ERASE MODE" if the 'memo.mem' file does not exist in the internal memory.



Note Go to ERASE MODE by MODE button.

ERASING FILES

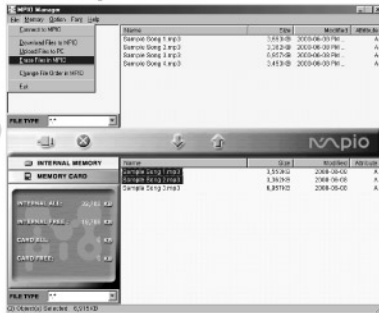
Turn the MPIO on and connect your MPIO to PC and execute the MPIO Manager before erasing.

On PC

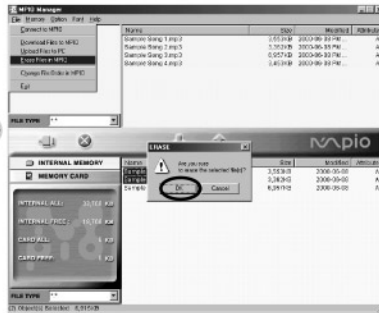
1 Click the file of the MPIO you would like to delete.



2 Click [File] and select [Erase Files in MPIO].



3 Click [OK].



You can also delete the file by pressing the right button on the mouse and selecting **Erase**.

On the MPIO

1 Press the MODE button to select Erase mode.



2 After selecting 'ERASE FILE', choose the file you'd like to erase by pressing ►►/◄◄/ + / - button.



3 Press the ►/■ button to erase file.



Select 'ERASE ALL' with ►►/◄◄ button and then choose 'YES' or 'NO'.

Note Once the file erased from your MPIO, it cannot be restored.

ARRANGING THE PLAYBACK ORDER

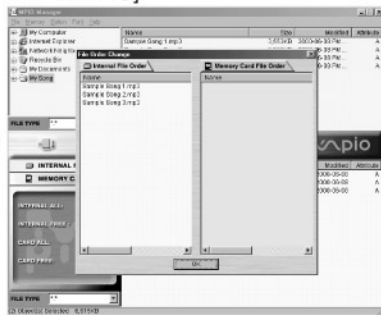
Connect your MPIO to PC using the USB cable and execute the MPIO Manager.

1 Execute the MPIO Manager.

- ◆ Double-click the icon of the MPIO Manager on the desktop.



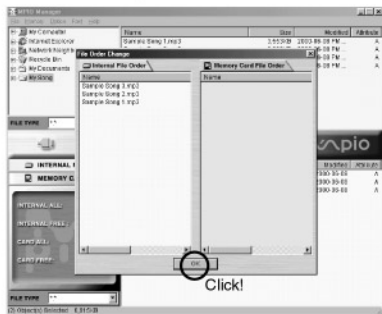
2 Click [File] and [Change File order in MPIO].



3 Arrange the files by dragging and dropping.



4 Click [OK] after moving files to the desired position.



5 The MPIO Manager displays the file arrangement you made.



DOWNLOADING ADDITIONAL FONT TO THE MPIO

To display other characters besides English, additional font should be downloaded to the MPIO.

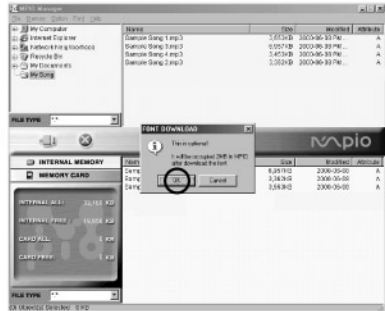
1 Execute the MPIO Manager.



2 Click [Font] and [Download Font to MPIO].



3 Click [OK].



- Optional font file occupies about 2MB of the MPIO memory.
- Select [Font] and [Erase Font in MPIO], if you want to recover 2MB due to font download.

- Additional font supports following characters.
 - ① European Alphabets
 - ② Japanese
 - ③ Korean
 - ④ Chinese

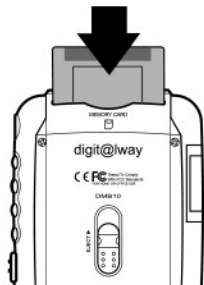
INSERTING THE SMC(SmartMedia Card)

You can store more music by using the SMC(SmartMedia Card).

★★★ You have to turn the MPIO off before inserting or ejecting SMC from the MPIO .

Inserting SMC

1 Insert the SMC into the SMC Card Slot.

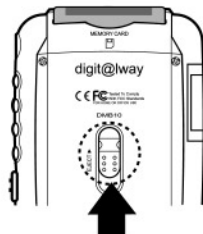


2 The SMC will appear when the MPIO is turned on.

TOTAL : 64MB
INTERNAL : 32MB
EXTERNAL : 32MB

Ejecting SMC

1 Push the SMC eject switch upward.



To send file to the MPIO, you must format the SMC before using it(refer to page 20).

MAKING MP3 FILES FROM AN AUDIO CD

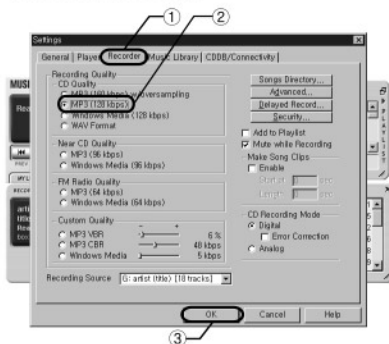
You must install the MusicMatch Jukebox on your computer before making MP3 files.
For software installation instruction, please refer to page 10.

1 Execute MusicMatch JukeBox.

Double-click the icon of the MusicMatch JukeBox on the desktop or click [Start], [Program] and select [MusicMatch JukeBox].



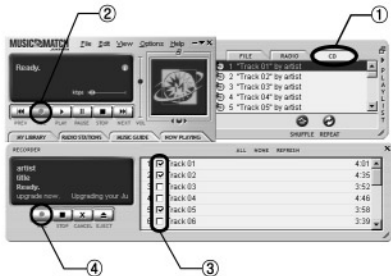
2 Recorder Setting.



■ Insert an audio CD into the CD-ROM drive.

- 1 Click [Option]→[Settings]→[Recorder], you will see window like picture on the left.
- 2 Check the box next to **MP3(128kbps)** for creating a MP3 file equal to CD quality.
- 3 After all setting is done, click **OK** button of window.

3 Select track(s).



- 1 Click 'CD' to see the CD information.
- 2 Click 'record button'. A new window will appear to show all tracks.
- 3 Select the track(s) you would like to convert to MP3 file.
- 4 Click 'record button' below to convert to MP3 file(s).

4 Convert to MP3 file(s)

◆ Recording status is displayed.



- If you'd like to stop converting, click the 'Cancel' button.
- Converted files are saved in **C:\My Document\My Music** folder.
- You can listen to the music on your MP3 player after downloading files to it.

SAFETY PRECAUTIONS

You must read to use the MPIO for a long time.

- 1 Do not drop your MPIO or leave it under heavy objects.
- 2 Do not allow any liquids to contact the MPIO.
 - If this happens, wipe the MPIO with dry cloth.
- 3 Avoid areas of high humidity, strong magnetic fields, or sources of heat when storing your MPIO.
- 4 Do not use thinner, alcohol, or benzene when cleaning the MPIO.
- 5 To avoid damage to the MPIO, battery always must be taken out when not in use for a long time.

TROUBLESHOOTING

1 The software does not work properly.

- Refer to pages 10~12, setting up environment.

2 The MPIO does not work or nothing is displayed on the LCD.

- Check the capacity of the battery. One 1.5V AA type battery is required.
- Check the polarity(+ and -) of the battery.

3 The buttons are not working.

- Check if the Hold Switch is down.
While the Hold Switch is down, the buttons do not work.

4 There is no audio produced when the ►/■ button is pressed in MP3 mode.

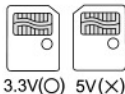
- Check that MP3 files are stored in the internal memory or the SMC.
- Check the volume level.

5 MP3 files cannot be downloaded.

- Check and/or replace the new battery.
- Check the connection between the USB port of your PC and the USB cable.

6 SMC cannot be inserted into the MPIO.

- Make sure you are using the correct SMC.
Only 3.3V version cards will work on your MPIO.
5V version cards will not function correctly.



7 The files in the SMC cannot be recognized.

- MP3 files downloaded hardware from a different may not work on your MPIO.
- Format the SMC and copy files again with the MPIO Manager.

8 SMC is inserted at power on state.

- Turn the MPIO off, and turn it on again.

TECHNICAL SPECIFICATIONS

Model	DMB
Memory Capacity	Internal Memory 32/48/64MB
Battery	One AA type
LCD	FSTN-type 3line LCD, 128x48pixels
Dimensions (WxHxD)	62.6x87.4x21mm / 71g (without battery)
Case	Aluminum, Plastic
File Transmission Speed	Up to 2.4 Mbps
Memory Socket	SMC(SmartMedia Card) socket (SSFDC Format)
Signal to Noise Ratio(S/N)	85dB
Earphone Output Power	14mW (R:7mW , L:7mW)
Output Frequency Range	20Hz~20KHz
Sampling Rate	16KHz~48KHz
Compressibility	32kbps~256kbps

SAFETY INFORMATION

FCC Part 15: This equipment has been tested and found to comply with the limits for a Class B digital device, pursuant to Part 15 of the FCC Rules. These limits are designed to provide reasonable protection against harmful interference in a residential installation. This equipment generates, uses, and can radiate radio frequency energy and, if not installed and used in accordance with the instructions, may cause harmful interference to radio communications. However, this notice is not a guarantee that interference will not occur in a particular installation. If this equipment does cause harmful interference to radio or television reception, which can be determined by turning the equipment off and on, the user is encouraged to try one or more of the following measures:

- Reorient or relocate the receiving antenna.
- Increase the distance between the equipment and receiver.
- Connect the equipment to an outlet on a circuit different from that to which the receiver is connected.
- Consult the dealer or an experienced radio/TV technician.

Modifications

Any changes or modifications not expressly approved by grantee of this device could void the user's authority to operate the device.

Compliance

This product conforms to the following Council Directive:

- Directive 89/336/EEC, 92/31/EEC(EMC)

Declaration of Conformity

Name: Digitalway Co., Ltd.

Address: Joong Pyung B/D(4,6,7F) 64-1, Woomyun Dong, Seocho
-ku, Seoul, Korea

declares under its sole responsibility that the product

Trade Name: Digitalway Co., Ltd.

Model Number: DMB

has been tested according to the FCC Part 15/CISPR22/95 requirements for Class B devices and found compliant with the following standards

EMI/EMC: ANSI C63. 4,1992, FCC Part 15 Subpart B

This device complies with part 15 of the FCC Rules.

Operation is subject to the following two conditions;

1. This device may not cause harmful interference, and
2. This device must accept any interference received, including interference that may cause undesirable operation.

WARRANTY

This MPIO brand product, as configured and distributed by Digitalway Co., Ltd. and delivered new, in the original carton to the original consumer purchaser, is warranted by Digitalway against manufacturing defects in materials and workmanship for following limited warranty period: **One(1) year**

This limited warranty begins on the original date of purchase, and does include transportation, installation, removal, and reinstallation.

Warranty repairs must be performed by Digitalway.

To receive warranty service, the original dated bill of sale must be presented upon request as proof of purchase to Digitalway. Transportation to and from Digitalway is the responsibility of the purchaser.

Digitalway will repair this product, at our option and at no charge, with new or reconditioned parts or will exchange the product with a reconditioned unit if found to be defective during the limited warranty period specified above. The product must be returned during the warranty period with transportation charges prepaid to Digitalway.

Prior to returning any product for warranty service, the purchaser must contact Digitalway for problem determination and service procedures. It is the purchaser's responsibility to secure all programs and data contained in or affected by the product. Digitalway does not warrant uninterrupted or error-free operation of the product, and shall not be liable for the loss or destruction of data or media resulting from the use or

service of this product.

All replaced parts and products become the property of Digitalway and must be returned to Digitalway.

Replacement parts and products assume the remaining original warranty, or ninety (90) days, whichever longer.

Digitalway's obligations respect to software products distributed by Digitalway under the Digitalway brand name are set forth in the applicable end user license agreement. Non-Digitalway hardware and software products are provided on an "AS IS" basis.

However, non-Digitalway manufacturers, suppliers, or publishers may provide their own warranties. This limited warranty covers manufacturing defects in materials and workmanship encountered in normal, noncommercial use of this product and shall not apply to the following, including, but not limited to: damage which occurs in shipment; applications and uses for which this product was not intended; failures or problems which are caused by products or equipment not supplied by Digitalway; accidents, misuse, abuse, neglect, misapplication, fire, water, lighting or other acts of nature; incorrect electrical line voltage, fluctuations or surges; damage caused by improper or faulty installation; improper connection with any peripheral; product alteration or modification; improper or unauthorized repair; cosmetic damage or exterior finish; product will altered serial numbers; failure to follow operating instruction, customer adjustment, maintenance and environment

instructions that are covered and prescribed in the instruction book; Use of non-Digitalway or unauthorized parts, supplies, accessories or equipment that damage this product or result in service problems; failures or problems due to incompatibility with other equipment.

The purchaser is cautioned that product performance is affected by system configuration, software, applications, purchaser data and operator control of the system, among other factors.

The product is considered to be compatible with many system, however it is the purchaser's responsibility to determine the functional implementation. Therefore, suitability of the product for a specific purpose or application is not warranted by Digitalway.

There are no express warranties other than those listed and described above, and no warranties whether express or implied, including, but not limited to, any implied warranties of merchantability or fitness for a particular purpose, shall apply after the express warranty periods stated above, and no other express warranty of guaranty given by any person, firm or corporation with respect to this product shall be binding on Digitalway. Digitalway shall not be liable for loss of revenue of profits, or any other special, incidental or consequential damages caused by the use, misuse or inability to use this product, regardless of the legal theory on such the claim is based. And even if Digitalway has been advised of the possibility of such damages.

Without limiting the foregoing, purchaser assumes all risk and liability for loss, damage or injury to purchaser and purchaser's property and to others and their property arising out of the use, misuse or inability to use this product sold by Digitalway not caused directly by the negligence of Digitalway.

This limited warranty shall not extend to anyone other than the original purchaser of this product, is nontransferable and states your exclusive remedy.

Some states do not allow limitations on how long an implied warranty lasts, or the exclusion or limitation of incidental or consequential damages, so the above limitations or exclusions may not apply to you.

This warranty gives you specific legal rights, and you may also have other rights which vary from state to state. This product is for personal use only, are is only for use in compliance with the limitations of copyright and other laws.