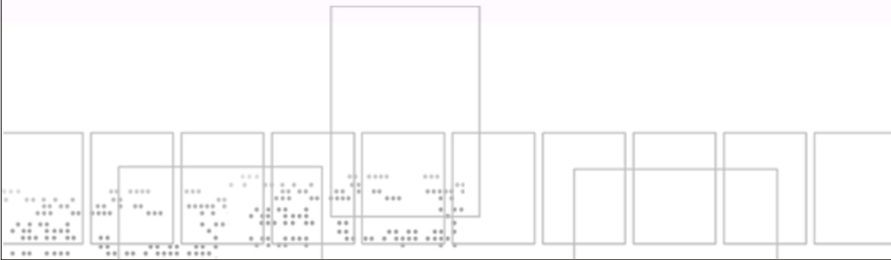


# User Manual



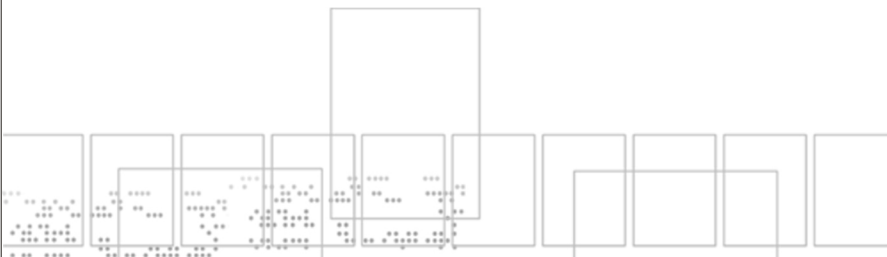
DUAL MODE DIGITAL CAMERA





## Table of Contents

● <b>Welcome</b> .....	1.
● <b>Getting Started</b> .....	2.
-Contents of package.....	2.
-System Requirements.....	3.
-Camera Nomenclature.....	4.
-LCD Screen Display Definition.....	5.
● <b>Powering Up</b> .....	6.
-Battery Installation	
-Turning Camera ON/OFF	
-Sleep Mode	
● <b>Taking Pictures</b> .....	7.
● <b>Install Arcsoft Programs and Camera Drivers</b> .....	8.
-Install Camera Driver.....	8.
-Arcsoft Photo Impression 4.0.....	9.
-Arcsoft Photo Base 3.0.....	10.
-Arcsoft Video Impression 1.6.....	11.
-QUickTime Player 6.....	12.
● <b>Uninstall Application Programs</b> .....	13.
● <b>Downloading Photos Using PhotoImpression 4.0</b> .....	14.
● <b>Photo and Sharing Management Using PhotoBase 3.0</b> .....	16.
● <b>Video Playback Using VideoImpression 1.6</b> .....	17.
● <b>Playing Movie Clips using QuickTime Player 6</b> .....	18.
● <b>Specifications</b> .....	19.



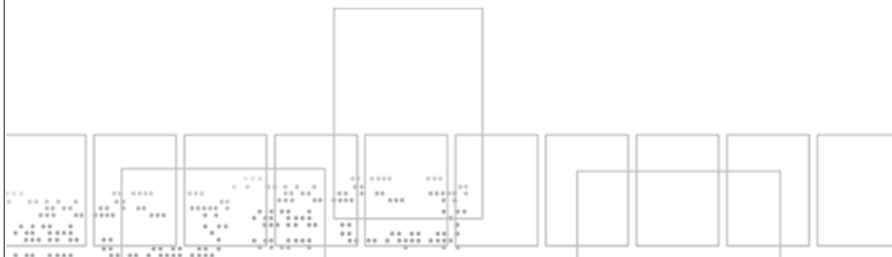


## Welcome

Thank you for choosing the Camera to pursue your digital adventures. Whether you are creating memories of your friends and family or exploring the great outdoors to get the utmost satisfaction from your digital camera, please take a moment to read through this manual. Its contents will send you on an educational journey into your camera's multiple capabilities.

Thank you again for choosing the camera!

- This camera is not resistant to water and should not be used outdoors in snow or rain. If accidentally dropped in water, please quickly pour out the water. Dry it with sunlight or an air-blower.
- Protect it from excessive humidity. It will wet the lens and the pictures taken will be blurred.
- Do not attempt to disassemble the camera yourself. Always take it to an authorized service facility for repair.
- To store the camera, wrap it in a piece of clean, soft cloth and place it in a cool, dry, dust-free place.





## Getting Started

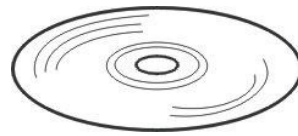
### Contents of package



QOG



Digital Camera



Installation CD(including camera drivers, Arcsoft software and User's Manual)



USB Cable



Carry Bag



Video Cable





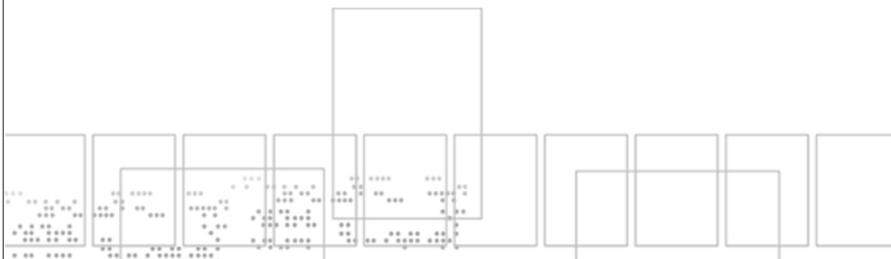
## Getting Started

### System Requirements

- Personal computer, laptop, desktop, or IBM compatible with Pentium 166 MHz minimum, and with an active USB (universal serial bus) port.
- Windows 98SE/ ME/ 2000/ XP, CD ROM drive, color monitor, mouse and keyboard.

#### NOTE

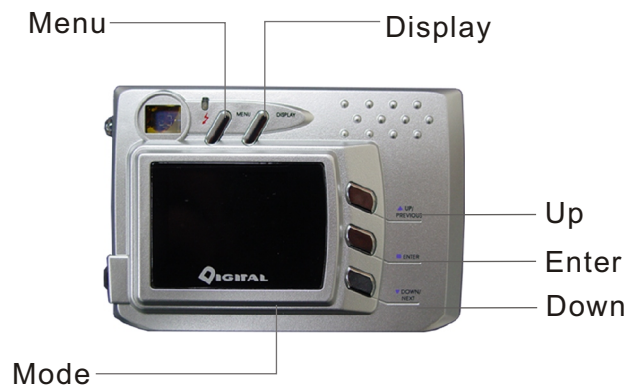
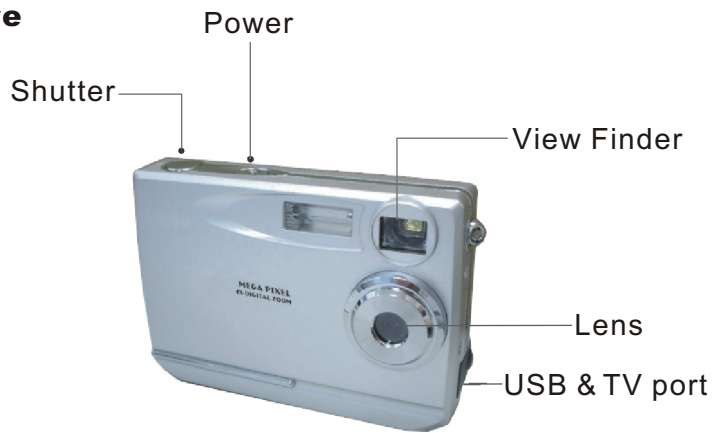
For transferring still images or for video conferencing, your computer must have a modem and communication software for internet connection.





## Getting Started

### Nomenclature



**Menu:** OSD Menu ON/OFF

**Display:** LCD, Status Icons ON/OFF

**Up:** Up / Previous / Zoom in

**Enter:** Menu Enter

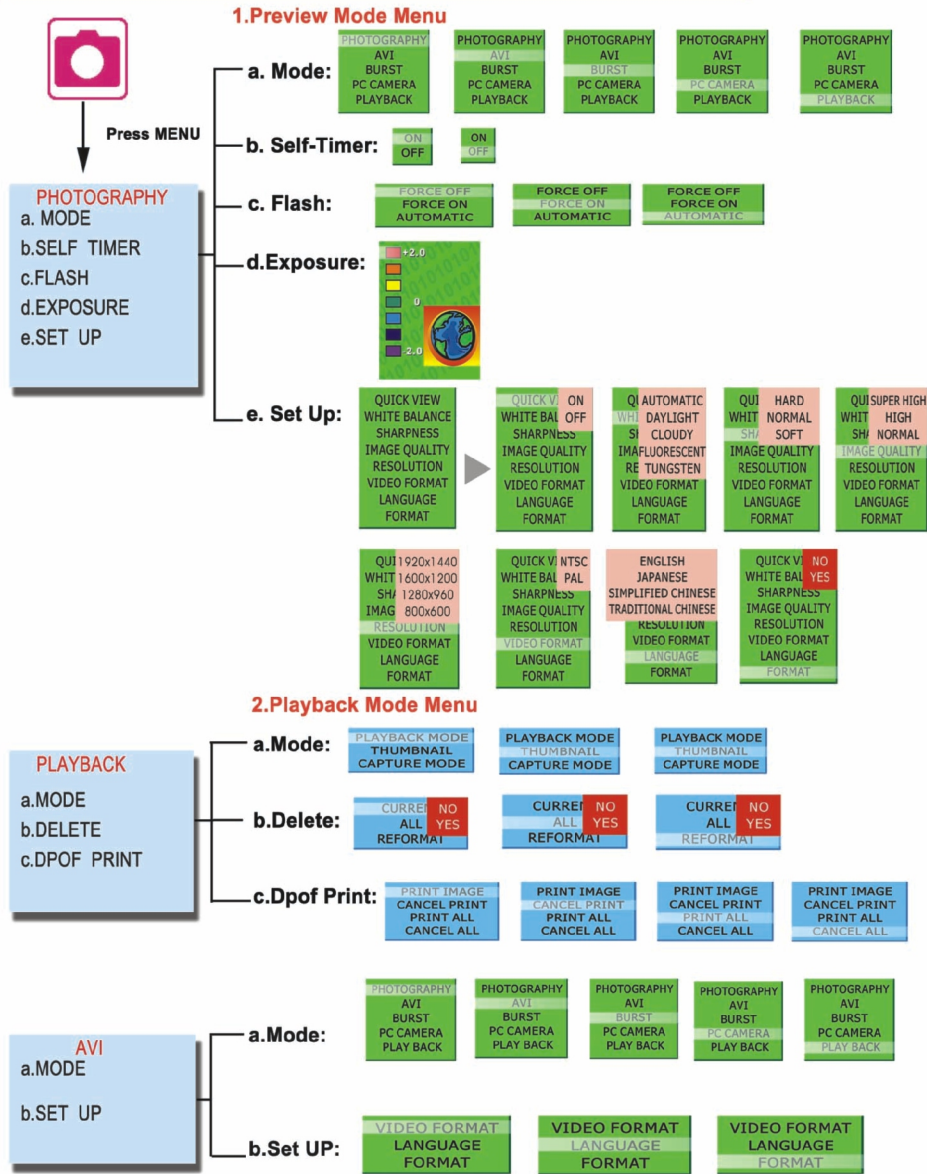
**Down:** Down / Next / Zoom out





# Getting Started

## LCD Screen Display Definition





## Power Up

### Battery Installation

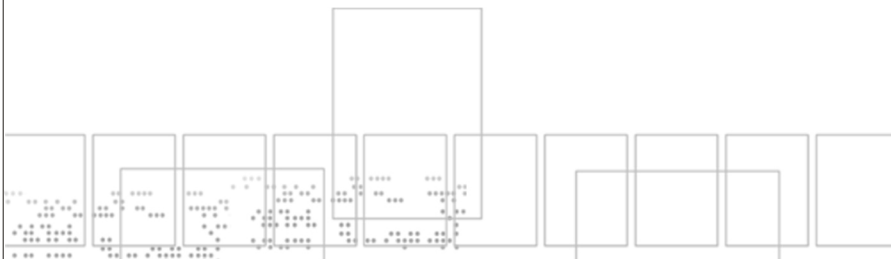
- I. Open the battery chamber cover.
- II. Insert batteries in correct polarity(+ and -)as shown on the inside of the battery chamber.
- III. Close the battery chamber cover.
- IV. Power turns ON after pressing the power button.
- V. The camera is now ready to take pictures.

### Turning the Power ON/OFF

1. Power turns ON after pressing the power button.
2. To turn camera OFF press and Power button until the camera beeps and the LCD screen is blank.
3. To turn camera ON from the OFF mode, press Power button until a beep is heard and the LCD screen turn on.

### Sleep Mode

- When the camera is ON while not being used for 60 seconds, it will automatically perform sleep mode to save battery power.
- To re-activate the camera from sleep mode :
  1. Press the Power button once.
  2. The camera is ready to take the next picture.







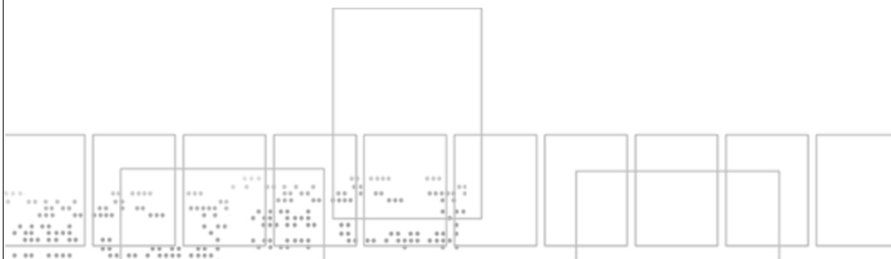
## Taking Pictures

### Taking a Snapshot

1. Aim the camera and compose your image by looking through the viewfinder.
2. Press the shutter button down. A buzz sound will be heard indicating that a picture has been taken.
3. The LCD screen will show the number of pictures taken.

#### NOTE:

- The camera stores all pictures in the built-in memory or Compact Flash Memory Card.

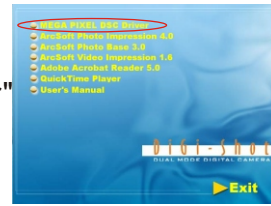




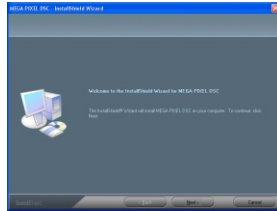
# Install Arcsoft Programs and Camera Drivers

## Install Camera Driver

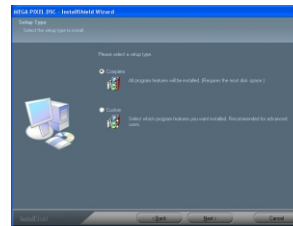
1. Insert CD-Disc & Select "MEGA PIXEL DSC Driver"



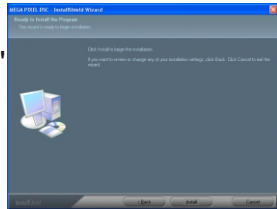
2. Click "Next"



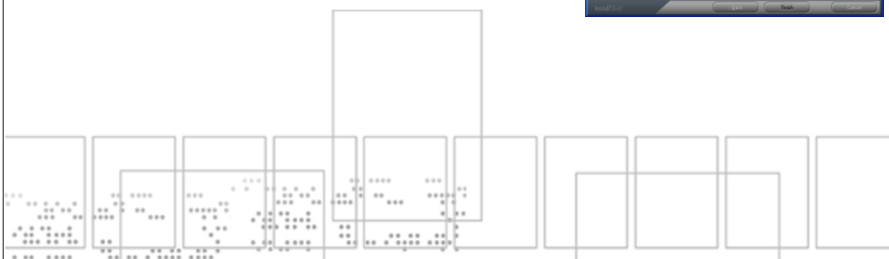
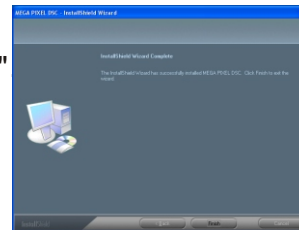
3. Click "Next"



4. Click "Install"



5. Click "Finish"



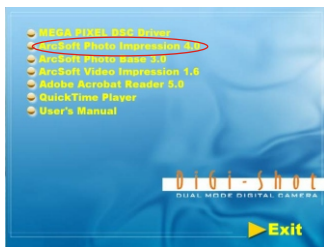


## Install Arcsoft PhotoImpression 4.0

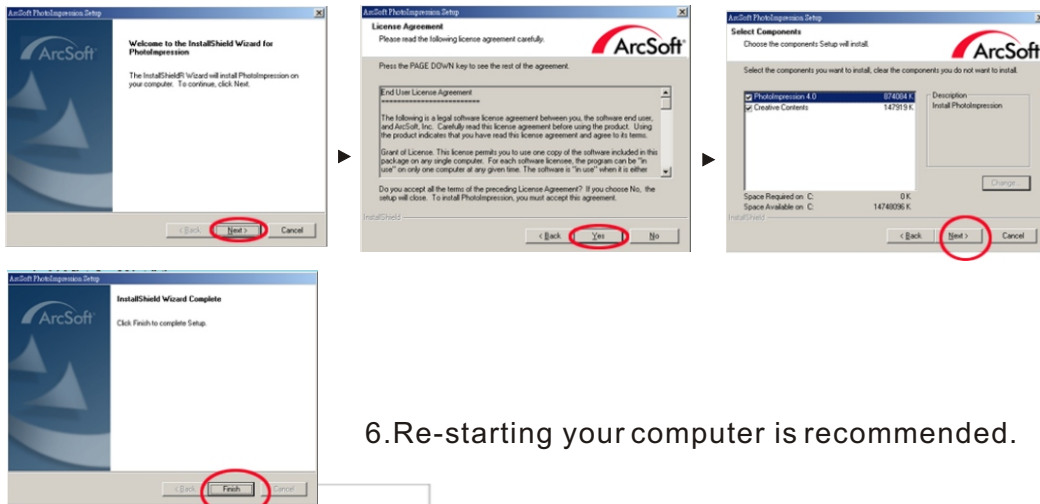
1. Turn computer ON.
2. Insert installation CD into your PC's CD-ROM drive.
3. Introduction screen will appear automatically.



4. Click "Arcsoft PhotoImpression 4.0" .



5. Follow on-screen instruction to install camera drivers.



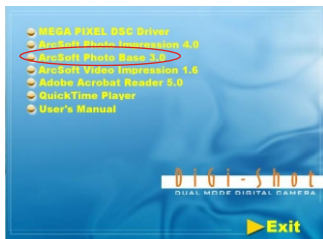
6. Re-starting your computer is recommended.

**NOTE:** To find out more about PhotoImpression 4.0 or how to use it, consult online help by clicking "?" Icon or "help" on the pull-down menu.



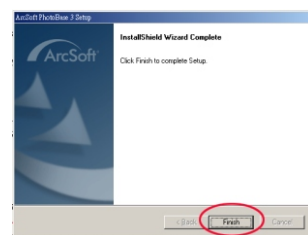
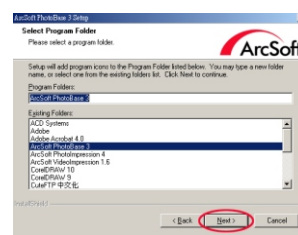
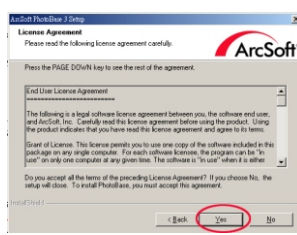
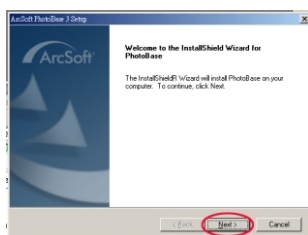
## Install Arcsoft PhotoBase 3.0

1. Turn computer ON.
2. Insert installation CD into your PC's CD-ROM drive.
3. Introduction screen will appear automatically.



4. Click "Arcsoft PhotoBase 3.0" .

5. Follow on-screen instruction to install camera drivers.



6. Re-starting your computer is recommended.

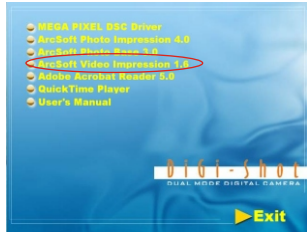
**NOTE:** To find out more about PhotoImpression 4.0 or how to use it, consult online help by clicking "?" Icon or "help" on the pull-down menu.





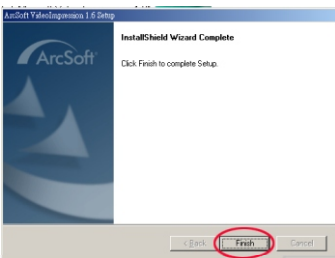
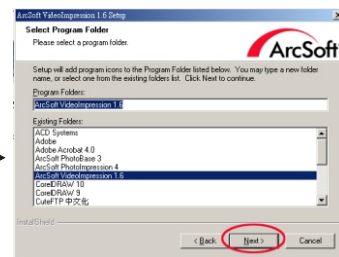
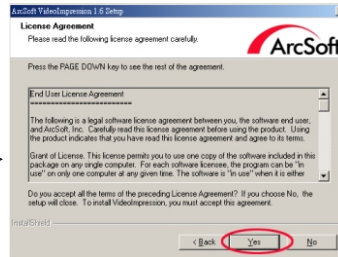
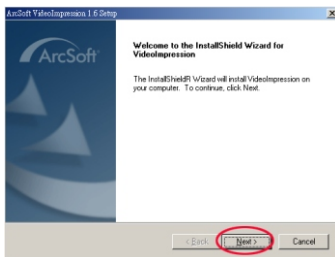
## Install Arcsoft VideoImpression 1.6

1. Turn computer ON.
2. Insert installation CD into your PC's CD-ROM drive.
3. Introduction screen will appear automatically.



4. Click "Arcsoft VideoImpression 1.6".

5. Follow on-screen instruction to install camera drivers.



6. Re-starting your computer is recommended.

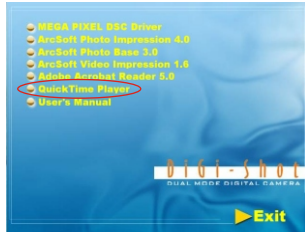
**NOTE:** To find out more about VideoImpression 1.6 or how to use it, consult online help by clicking "?" icon or "help" on the pull-down menu.





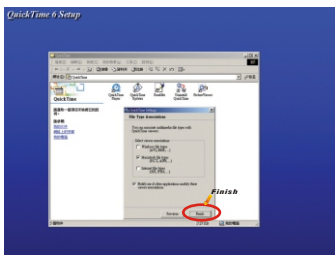
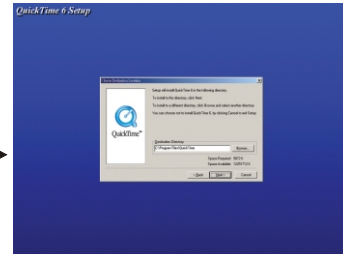
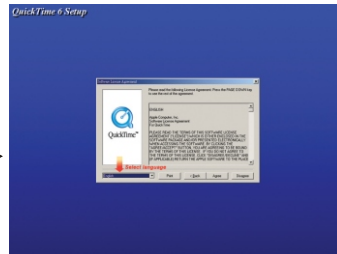
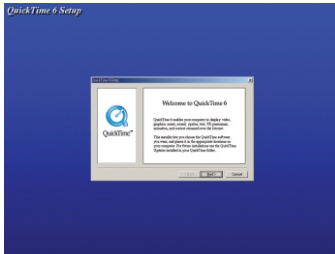
## Install QuickTime Player 6

1. Turn computer ON.
2. Insert installation CD into your PC's CD-ROM drive.
3. Introduction screen will appear automatically.



4. Click "QuickTime Player" .

5. Follow on-screen instruction to install camera drivers.



6. Re-starting your computer is recommended.

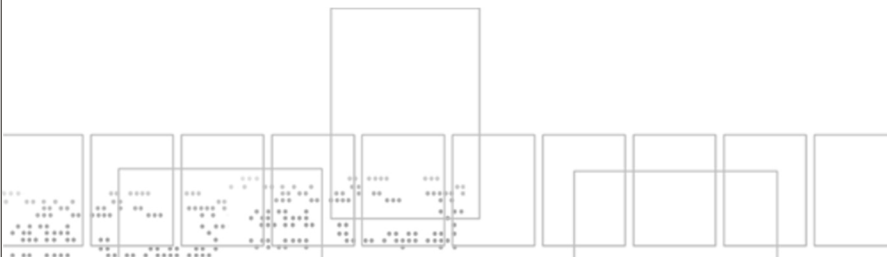
**NOTE:** To find out more about QuickTime Player 6 or how to use it, consult online help by clicking "?" icon or "help" on the pull-down menu.





## Uninstall Application Programs

1. Search through Start > Programs > AcroSoft > PhotoImpression 4.0 > Uninstall.
2. Follow on-screen instruction to uninstall software.





## Downloading Photos Using PhotoImpression 4.0

As a USB Mass Storage Device, with the camera connected, its memory will simply appear as a disk drive to the host computer. Any files can be copied to and from the camera's memory, just like any other file on any other disk drive.

For Windows 98SE user, please go to Microsoft [www.microsoft.com](http://www.microsoft.com) to update Windows for Mass Storage Function Support.

**Please set the camera at Mass Storage Mode.(Default)  
Set Up \ Driver Type \ Mass Storage**

**\*\* Please turn on the camera power before connecting the USB cable.**

1. Click "PhotoImpression 4.0" icon on desktop,



2. PhotoImpression 4.0 introduction screen will appear.



3. Click "From Folder" button.



4. Click "Browse ".

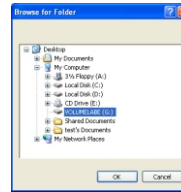




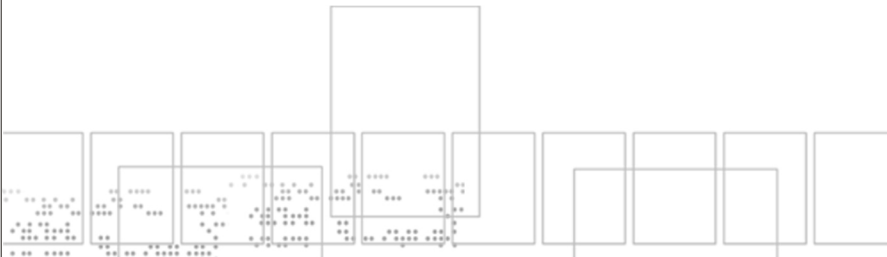


## Downloading Photos Using PhotoImpression 4.0

5. Click "D:\ or G:\(Mass Storage Disk)DCIM" and OK.



6. Use editing tools available on-screen to modify image(s).



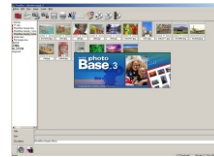


## Photo and Sharing Management Using PhotoBase 3.0

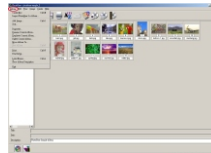
1. Click "PhotoBase 3.0" icon on desktop,



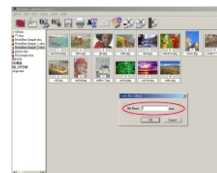
2. PhotoBase 3.0 introduction screen will appear.



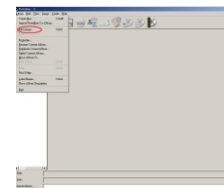
3. Open Album menu bar.



4. Select "Create New" and enter file name.

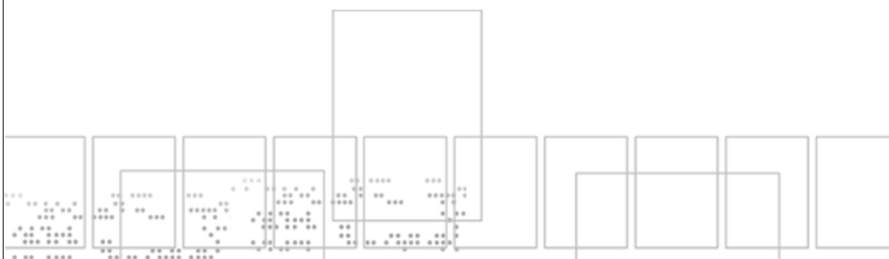


5. Open Album menu bar and select "Add Image".



6. Save the pictures to your computer.

7. Share and manage your pictures.





## Video Playback Using VideoImpression 1.6

**(Please change camera to PC Camera Mode)  
Set Up \ Driver Type \ PC Camera**

1. Click "Videoimpression 1.6" icon on desktop,



2. VideoImpression 1.6 introduction screen will appear.



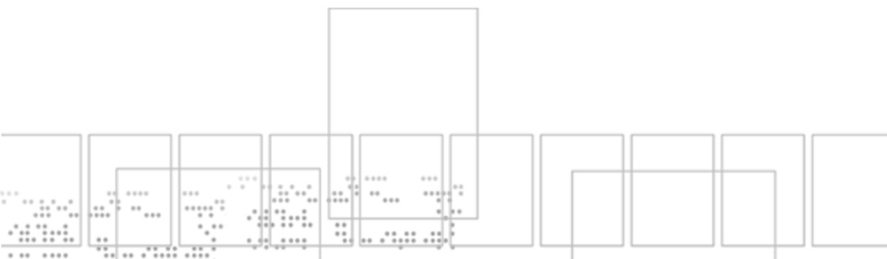
3. Click "New" button.



4. Click "Capture".



5. Video will begin playing.





## Playing Movie Clips using QuickTime Player 6

(Please change camera to Mass Storage)



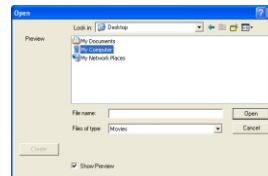
1. Click "QuickTime Player" icon on desktop,
2. "QuickTime Player" introduction screen will appear.



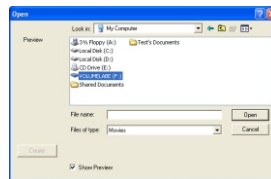
3. Open "File" menu bar and Select "Open Movie in New Player".



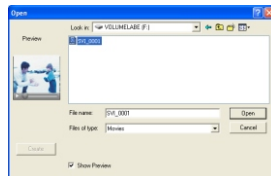
4. Select "DeskTop" and Click "My Computer".



5. Click "VOLUMELABE(F:)"



6. Click "SVI-0001"



7. Movie will begin playing.





## Specifications

•Image Sensor	CMOS 1600x1200 pixels
•Lens Specification	F2.8, Sensor area 1/2". F=8.64mm(43 mm equiv), view angle 54°
•O/S	Microsoft Windows 98SE/2000/ME/XP
•White Balance	Auto/Manual(day light/cloudy/tungsten/fluorescent)
•Exposure Control	Auto
•Frame Rate-Video Mode	VGA 640x480 pixels 9 fps QVGA 320x240 pixels 25-30 fps
•Stores Picture- Still Picture Mode(Based on 8MB Flash Memory)	1920x1440 pixels(Super Fine) up to24 pictures 1600x1200 pixels(Fine) up to 35pictures 1280x 960 pixels(Normal) up to 52 pictures 800x600 pixels(Economy) up to 140 pictures
•PC Interface	USB
•Fixed Focus Lens	1m~infinity
•Storage	8MB Flash Memory + Secure Digital Card (card not included)
•Compression	JPEG
•Display	1.5" Color TFT LCD
•Zoom	4X Digital
•Movie Clip	QVGA 320x240 pixels up to 30 seconds. @30fps
•Video Output	NTSC or PAL
•Power Source	AAA1.5V x 2(not included)
•Dimensions	88mm x 60mm x 20mm

