





# FCC $\mu$ $L_2$ $\Delta$ $W$ $\frac{1}{4}$ $E$ $\hat{A}$ $\hat{A}$ $\hat{C}$ $\hat{U}$

$\mathbb{Y} \gg \ddot{E} \mathring{m} \acute{g} \acute{u} \hat{O} \hat{O} \hat{e} \hat{A} \hat{X} \hat{B} - \hat{A} \hat{E} \hat{i} \ddot{E} \mathring{m} \hat{W} \hat{e} \hat{I} \text{FCC } 15, \text{ } ^s \hat{W} \hat{e} \hat{e} \hat{o}$   
..  $\hat{C} \hat{W} \hat{e} \hat{P} \hat{b} \text{ } \frac{3}{4} \hat{d} \hat{b} \hat{i} \hat{v} \hat{E} \hat{I} \hat{a} \hat{y} \hat{x} \hat{S} \hat{E} \hat{P} \hat{A} \hat{Z} \hat{C} \hat{Y} \hat{y} \hat{i} \hat{O} \hat{I} \hat{E} \hat{a}$   
 $\mathbb{Y} \hat{E} \hat{a} \hat{R} \hat{W} \hat{U} \hat{y} \hat{E} \hat{I} \hat{N} \hat{E} \gg \ddot{E} \mathring{m} \hat{O} \hat{O} \hat{Y} \hat{I} \hat{B} \hat{N} \hat{E} \hat{I} \hat{i} \hat{o} \hat{S} \hat{L} \hat{u} \hat{A} \hat{W}$   
 $^2 \hat{y} \hat{N} \hat{i} \hat{a} \hat{P} \hat{A} \hat{Z} \hat{L} \hat{u} \hat{q} \hat{q} \hat{T} \hat{C} \hat{D} \hat{i} \hat{y} \hat{S} \hat{e} \hat{x} \hat{N} \hat{i} \hat{a} \hat{y} \hat{x} \hat{E} \hat{P} \hat{A} \hat{Z} \hat{C}$   
-  $\hat{Y} \hat{G} \hat{O} \hat{u} \hat{A} \hat{O} \hat{Y} \gg \ddot{E} \mathring{m} \hat{a} \hat{M} \hat{E} \hat{O} \hat{Y} \gg \ddot{E} \mathring{m} \hat{i} - \hat{P} \hat{u} \hat{O} \hat{I} \hat{m} \hat{O} \hat{S} \hat{\mu} - |$   
 $^3 \hat{y} \hat{x} \hat{E} \hat{P} \hat{A} \hat{Z} \hat{A} \hat{E} \hat{N} \hat{E} \hat{H} \hat{O} \hat{U} \hat{O} \hat{e} \frac{1}{2} \hat{O} \hat{a} \hat{G}$

\*  $\frac{1}{2} \hat{O} \hat{a} \hat{\mu} \hat{x} \hat{N} \hat{u}$

\*  $\pm \hat{N} \gg \ddot{E} \mathring{m} \hat{E} \hat{\mu} \text{ } \frac{3}{4} \hat{q} \hat{r} \hat{q} \hat{A} \hat{W} \hat{I}$

\*  $\pm \hat{N} \gg \ddot{E} \mathring{S} \hat{N} \hat{E} \hat{P} \hat{O} \hat{q} \frac{1}{2} \hat{P} \hat{y} \hat{A} \hat{N} \gg \ddot{E} \mathring{m} \hat{E} \hat{\mu} \text{ } \frac{3}{4} \hat{x} \hat{D} \hat{O} \hat{E}$   
|  $\hat{P} \hat{E} \hat{A} \hat{a} \hat{q} \hat{O}$

\*  $- \hat{C} \hat{B} \hat{g} \hat{P} \hat{O} \hat{I} \text{ } ^3 \hat{G} \hat{E} \hat{P} - \hat{P} \hat{u} \hat{x} \hat{I} \hat{m} \hat{S} \hat{D} \hat{v}$

$\hat{a} : \hat{N} \hat{E} \hat{\mu} \hat{E} \gg \ddot{E} \mathring{m} \hat{p} \hat{N} \hat{O} \hat{S} \frac{1}{4} \hat{g} \hat{s} \hat{y} \hat{t} \hat{O} \hat{N} \hat{P} \hat{A} \hat{S} \hat{O} \hat{I} - \hat{S} \hat{i} \hat{N} \gg \ddot{E}$   
 $\hat{m} \hat{S} \hat{N} \hat{A} \hat{x} \hat{N} \hat{o} \hat{\mu} \hat{D} \hat{A} \hat{C}$

# ¥Ø¿ý

---

## 1. Å² ¤¶ .....1-1

## 2. | w , È ± ½° È ¾¹ .....2-1

2.1 ©½c..... 2-1

2.2 Å©w È m § Ñ£..... 2-2

2.3 ³ Ð SCSI ID , ½X..... 2-3

2.4 ¤ Å©È ð SCSI ² ¤ ¼¹..... 2-3

2.5 ³ s µ ½È¹..... 2-5

2.6 | w È SCSI ¤¶ ¥d..... 2-7

2.6.1 PC " È È Ì..... 2-7

2.6.1.1 ADAPTEC AVA-1505AE SCSI ¤¶ ¥d..... 2-7

2.6.1.2 " È SCSI ¤¶ ¥d..... 2-8

2.6.2 Mac " È È Ì..... 2-8

2.7 - ½Z © ñ m..... 2-9

2.8 ± ð ¤ ½È¹ ¤ ½..... 2-10

## 3. | w , È ÅX ° È µ{ | j .....3-1

3.1 MAC " È È Ì..... 3-1

3.2 PC " È È Ì..... 3-4

3.2.1 | w ÅX È { p s e..... 3-4

3.2.2 | w ÅX È { j..... 3-4

3.2.2.1 | bWINDOWS 3.1ª s @ Å Ø ÒU..... 3-5

3.2.2.2 | bWINDOWS 95ª s @ Å Ø ÒU..... 3-5

3.2.2.3 | bWINDOWS 98/WINDOWS 95 OSR2ª s @ Å Ø ÒU..... 3-6

3.2.2.4 | bWINDOWS NT4.0ª s @ Å Ø ÒU..... 3-6

3.2.3 ² ¾£ ½ÈÅX È { j..... 3-7

**4. | p | Ó¾PS @ ±½° È¾¹ .....4-1**

4.1 ± ÆÏÏ Æ (TWIN/PLUG-INS) ð ð ÒÈ ½ÆÅ Æ { | ..... 4-1

4.1.1 Mac " ÆÏ Ì..... 4-1

4.1.2 PC " ÆÏ Ì..... 4-3

4.2 " ÆÅ Æ { p S ÆÏ Ò ¶ | ± ..... 4-5

4.2.1 ¿ ¼Û ð Ñ Ó½..... 4-5

4.2.2 ¿ ¼Û Æ p ° ÆR x..... 4-6

4.2.3 ¿ ¼Û Æ Æ ¼ ð Ñ Æ..... 4-8

4.2.4 ± ± S Æ ¼ ð Ñ ..... 4-13

4.2.5 ÆÏ ò Æ ¼ ð Ñ Æ ù Æ..... 4-22

4.2.6 " ÆÏ ù Æ..... 4-23

4.2.7 Ñ Æ Æ Ñ ½È..... 4-24

4.3 " ÆÅ Æ Æ Æ Æ Æ Æ..... 4-25

4.3.1 | y Æ Æ Æ Æ Æ Æ Æ..... 4-25

4.3.2 Æ Æ Æ Æ W Æ Æ Æ..... 4-26

**5. « 0 ¾i » P ² M ¼ä .....5-1**

**6. ±Æ° È¿ Û»~ « Û« n .....6-1**

6.1 ± ~ Æ Æ Æ Æ Æ..... 6-1

6.2 S P Æ Æ È..... 6-4

**7. ² È«~ ³ W ®æ .....7-1**

7.1 ¾« p GAVA3 400/AVA3 PLUS..... 7-1

**- Á ð P .....a**





# 2. | w , E ± 1/2° E 3/4 1

a : N Eμ

\* 1/2 D A H 2 E C n m b Q S z μ O g ° æ p e z ß a æ ú O g I k x °  
° a A O i à | R ± 2 E z O p C

\* 1/2 D A H 2 E ! w m b 4 A O I C D H ° æ p e C

\* ° E z E E 1/2 T E æ y q q 1/2 C

\* ± E 2 E ! w E E A a @ à æ W T E O E E A a @ à ± E i æ E P 4 ± ñ  
O I E E W ° X p C

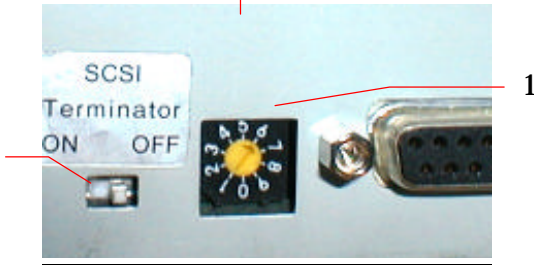
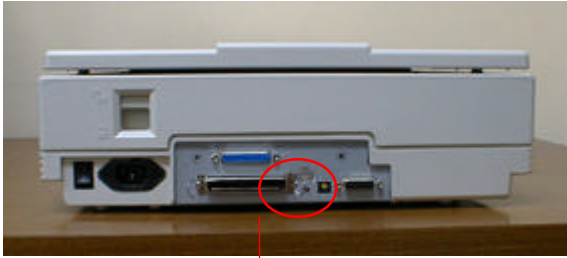
\* - æ è E 1/4 O h ß A z D O e 2 E C O a E | E O æ C

## 2.1 © 1/2 c

1/2 D p ß O i E 2 E a E | E O æ A A Ñ O ç a æ E O O a ° w E O  
E p e Y E p e O p u O I u | A z D Y e q 3/4 e O O P E N z O C



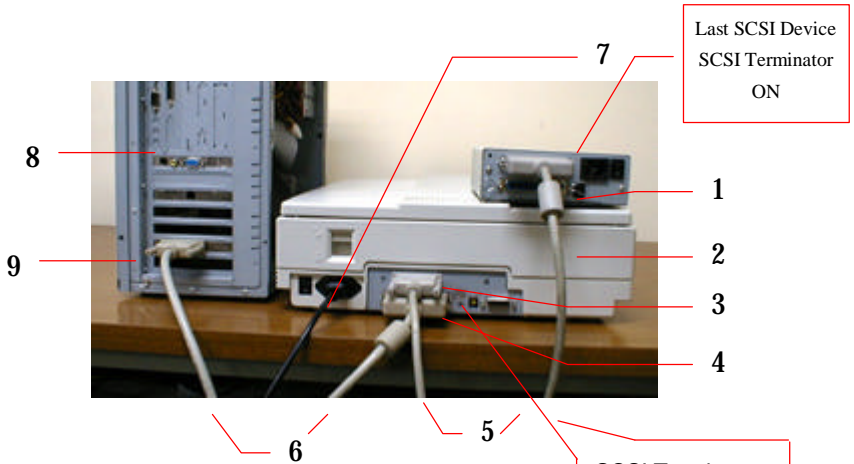




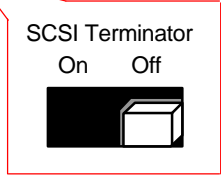
1. SCSI ID , ½X Ðw
2. SCSI ² ² Ý± þ¶ ¶Äö

¹ 1-2. SCSI ID , ½X Ðw SCSI ² ² Ý¶ ¶Äö





1. SCSI Terminator
2. SCSI Controller Card
3. 25-Pin SCSI Connector
4. 50-Pin SCSI Connector
5. SCSI Cable
6. SCSI Connector on Controller
7. SCSI Terminator
8. SCSI Controller Card
9. SCSI Cable



1. SCSI Terminator



## Windows 95 ¼ U

Windows 95 ¼ S t Adaptec SCSI ¼ ¶ ¼ Á X Ê { ; © Ö H Ö Windows 95 « SCSI ¼ ¶ ¼ ¥ § Y ß Q Ú Ê » ¥ X A X E M A P Á X Ê { ; y § ¹ ² ; C

## bWindows NT 4.0 ¼ U

1. « Ö ¶ Ö ³ Ö w ± ± ¥ X A M I E ¥ Á Á I a U SCSI ¼ ¶ ¼ ¥ d ; C
2. ; b SCSI ¼ ¶ ¼ ¥ d ß p p U ¼ Ü ¼ W ¶ © M ¼ ¼ Ü S y Ö SCSI ¼ ¶ ¼ ± ¥ d ; C
3. ; b S y Ö a e ¼ Ö ¼ Adaptec”” Á b k ¼ Ä æ Ö ¼ Ü IC-6x60 ISA single chip SCSI Controller” ; C
4. « ö Ö Á ö ¥ Ü y È A Á « a Ö Windows NT4.0 ; C

## 2.6.1.2 “ ¥ E SCSI ¼ ¶ ¼ ¥ d

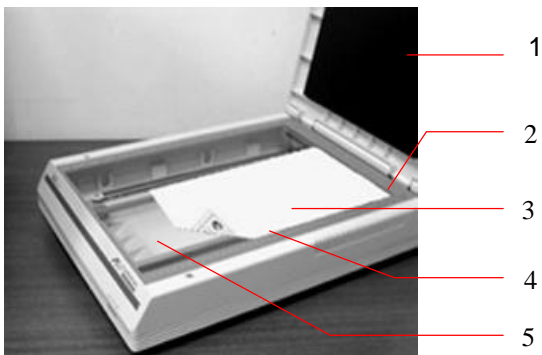
; p S A SCSI ¥ d 0 0 V ¥ L t Ö E E É M Ö Ö Ö t Ö S p Ö Ñ Ö w . È C

## 2.6.2 Mac “ ¥ P Ì

Mac “ È w SCSI ¥ d S µ Å § Ö Ö È p Ö Ö H ¶ ¥ t a e w È C

## 2.7 - 1/2Z 0ñm

1. p U 0 0 Ü A 2 DN 1/2Z W e ° p r i Ç i Ā i A Ā M X 8 z ± Ā 0 ñ  
 2. 0 6 Ā Ā 0 u W 0 i æ % Ę C



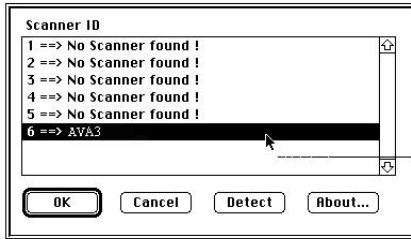
1. ± 9/2 Ę Ā W \
2. 1 i Ā I
3. - 1/2Z
4. x 0 W
5. - Ā Ā 0 ù

1 Ĭ-5 - 1/2Z 0ñm









<sup>1</sup> I3-7

---

a : NÆμ | þ S A ð ö P Ì s ÅX Ê { ; S K N Π P J Æ Ú Æ q ° Ó  
- P S à Ì s ÅX Ê { P Ü Û S A ° q E S Y i A Æ Ú Æ q ° S } 0  
<http://www.avision.com>

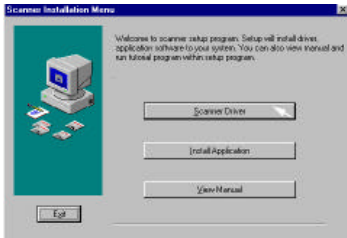
---





### 3.2.2.3 | bWINDOWS 98/WINDOWS 95 OSR2 a s@ ÀδÒ αU

3. α@ Ó s4W ÅE æF<sup>a</sup> o i Ûϕ ó ¥X { A ö@ B; C
4. ¿ ¼Û ¼¾P ¥@E; A ö@ B; C
5. ¿ ¼ÛCD-ROM"; A M á ¼ÛDriver"α ÎWin98"α ¥Øý C
6. « öÛÃðø ¼Û; † y ÈÁρC
7. † B k á@ Ói Ûϕ ó ¿ ¼ÛS ö C
8. ³ @Éþ ¼-1<sup>a</sup> φ ÛÉw Èe ± ¥X { Ç þ G S ¥X { A h2Ðö  
¶ ÐI« ¼s Å ¼Û ç æ A B i Ûϕ ÅæÛÉÁæ Jd:\setup.exe"  
μ M á ¼K"Áþ ]d:" - 0 y È { ç Òø ¥@E+ † m ^ C° ÑÖI  
3-2)



1 ¼-1



1 ¼-2

8. ¿ ¼ÛScanner Driver" ; A ÅöÛÃðø ¼Û; † y ÈÁρC

### 3.2.2.4 | bWINDOWS NT4.0 a s@ ÀδÒU

3. « ¶¶ ÐI« ¼s Å ¼Û ç æ A B i Ûϕ ÅæÛÉÁæ J  
"d:\setup.exe" μ M á ¼K"Áþ ]d:" - 0 y È { ç Òø ¥@E÷  
† i m ^
4. « öÛÃðø ¼Û; † y ÈÁρC

### 3.2.3 2 4 9 2 4 X 6 :

± 2 4 9 2 4 X 6 : 2 4 9 2 4 X 6 : 2 4 9 2 4 X 6 :  
μ { 1 >Avision Scanner AVA3; C | bAvision Scanner AVA3 2 4 9 2 4 X 6 :  
“Uninstall Driver”S 2 4 9 2 4 X 6 :

# 4. | p | Ó¾P§ @ ± ½° È ¾¹

AVA3" ¤ € ½Ëª ÅX Ê{ p £@ @ ÖYH æW ÒÊµ{ ; ¥¥¶ | ; b  
TWIN\*¼DÇ¶ ± À¥Îµ{ p æ ÒÊµM a ¥¥H ½Ë§ æv ÷ ù\$ A  
a ° q æ p Ç ] ¶ ± Ò½ËÅX Ê{ ¶ R W 0 | p £P À¥Î Å¢ Ó³  
© Ò£P ÆÖ§ ½P R WØ A₂DÑSÖ ÒK P ¾v ½§ À¥Î Å¢ ° Ì  
¥Ê æµ C

## 4.1 ± À¥Î Å¢(TWIN/Plug-ins) × æ ÒÊ½ËÅX Ê µ{ ;

### 4.1.1 Mac .. ÆÊ Ì

1. ± ÒÊ² ¾v ½§ À¥Î Å¢: Óp Adobe PhotoShop, Ulead ImagePals,  
© ÆHª ÆØMGI PhotoSuiteµ ¶ A q"File"¥\ Æ µ W ¾Ü"Import" ¿ ì  
¶ µ C
2. ¿ ¾Ü"Mr. Scan-Expert" ¬ ° ÓÆÆ µ ¶ µ C



3. ½DN ½ ½E ½v ½ ± ÅUñh ½Ez h WC

4. AVA3 TWAIN .. ÑP ð ¶ ± N ÅæÜb ÅøW S ÅæH ¼Üreview©Î  
Scan « Ää Óùó Ì ð C



1 İ4-1 Plug-in .. ÑP ð ¶ ±(Mac)

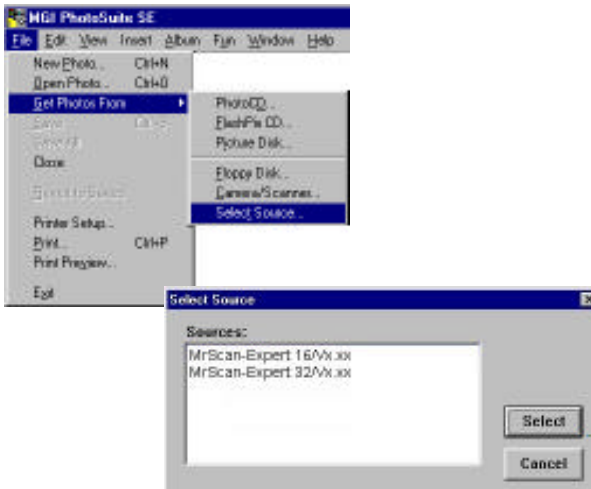
---

\*TWAIN: ½pW Technology Without An Interesting Name, - ÅæP ÅøPv  
1 ½øP ð ÅæP ½Ez h ÅæH ½øW ½DCC

---

## 4.1.2 PC 上 TWAIN 設定

1. 「File」メニューから「Select Source」を選択し、表示されるダイアログボックスで「TWAIN」を選択し、「OK」をクリックする。
2. 「Select Source」ダイアログボックスで「TWAIN」を選択し、「OK」をクリックする。
3. 「Mr.Scan-Expert」を選択し、「OK」をクリックする。





## 4.2 影像來源設定

### 4.2.1 影像來源設定

AVA3 提供多種影像來源設定 (Transparency)；請參閱 A  
系列說明書以瞭解更多資訊。



### 1 4-3 1/4 吋 3/4 吋

## 4.2.2 分辨率与像素

分辨率与像素  
 分辨率是指每英寸的像素数 (dots per inch (dpi))。分辨率越高，图像越清晰。分辨率越低，图像越模糊。



图 4-4 分辨率与像素



图 4-5 分辨率 50 dpi



图 4-6 分辨率 100 dpi

- ̂Z

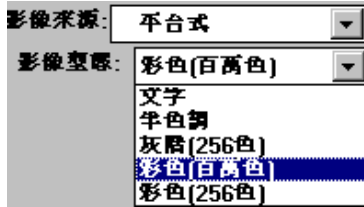
1. " ̂300 dpi a ; ̂NR ̂M̂m ̂v ̂v ̂P̂V A ̂ŷ @ ̂M̂x̂ p  
 a ̂m̂ ̂v̂ ̂ĵ ̂ ̂5MB a ̂ŴD̂ĵ C | ĵ Â ũ a ; ̂NR̂ ̂q̂  
 ± < ̂WL600 dpi) ; b ̂Ö̂ ̂p̂ ̂p̂ ̂» ̂Ŷ ̂Â ̂p̂ ̂#̂ ̂ŷ ̂p̂  
 ̂d̂ ̂ ̂ ̂ ̂ ̂ ̂ ̂ ̂ C
2. Ŝ ̂Â ̂v̂ Ŝ @̂ ̂P̂ ̂Â ̂Ê ̂Ĥ ̂ ̂ ̂ ̂Ĥ ̂ ̂Â î ̂Ń̂  
 " ̂Â ̂ ̂ ; ̂NR̂ ̂ C

̂ ̂ ̂ ̂	± ̂v̂ ̂P̂w	̂v̂ ̂P̂ĵ	̂NR̂ × (dpi)
̂Â ̂Ê ̂Ĉ ̂B̂ ̂ ̂ ̂ ̂Â ̂v̂ ̂Ê ̂		̂ ̂	200
̂v̂ L̂ ̂ŷ ̂Â ̂m̂ ̂â̂ Ń̂		̂m̂	100
̂ ̂ ̂ ̂ (OCR*) ̂Â ̂ ̂		̂ ̂	300

\*OCR: ̂Ŵ Optical Character Recognition, Ŝ ̂ ̂ ̂ ̂ ̂  
 ® ̂ ̂ ̂ C

## 4.2.3 2D 3D 4D 5D 6D 7D 8D 9D

1 2 3 4 5 6 7 8 9 10 11 12 13 14 15 16 17 18 19 20 21 22 23 24 25 26 27 28 29 30 31 32 33 34 35 36 37 38 39 40 41 42 43 44 45 46 47 48 49 50 51 52 53 54 55 56 57 58 59 60 61 62 63 64 65 66 67 68 69 70 71 72 73 74 75 76 77 78 79 80 81 82 83 84 85 86 87 88 89 90 91 92 93 94 95 96 97 98 99 100



1 2 3 4 5 6 7 8 9 10 11 12 13 14 15 16 17 18 19 20 21 22 23 24 25 26 27 28 29 30 31 32 33 34 35 36 37 38 39 40 41 42 43 44 45 46 47 48 49 50 51 52 53 54 55 56 57 58 59 60 61 62 63 64 65 66 67 68 69 70 71 72 73 74 75 76 77 78 79 80 81 82 83 84 85 86 87 88 89 90 91 92 93 94 95 96 97 98 99 100



¥b ÆQ̃(Halftone) --- ± ½# ÅÕ§ Î

¥b ÆQ̃+ ¶ ÅB ÅÜÇ ÅB S Øø æ ç ; Q̃Q̃ÀÇ¥  
¼+ ¶ C S θ 0 S A θ æ@¶ Å: Ø† Ýø Q̃+ ¶ ÉA  
- Ý: Ø½F Üæ@ ÓÇ¥¼+ ¶ Ç ÜH ò ÈM ø x °  
1 Æx FÆF F Ø ÅÇ Ç † ¥b ÆQ̃+ æ † ¶ ÅQ̃v  
1 a æ@ ØY Ç Ó³ Åu Ýn1 | r a ¶ ÅØÆQ̃â è  
° ¶ ØØH ØØÝn ° P DÅ† Åx s24 | r ¥p mv  
1 ØØÝ¹/24; C



1 Ì4-7 ¥b ÆQ̃+ 3

! 024¼h -- ± ½ÅÖóù

! ¼v ³ 0 æD @Šİ a ¼v ³ A æ p ŪÖ\$ ² F  
256° 0¼h ; C EF ÅP ÅÖ¼v ¼- | ² a °  
± ½¼¼H £ Ñ2¼h ¼ÅÅŠÖ ¼ ¼v ³ Ö  
, ; ¼ p S A ² ½É@ ¼ ÅÖ° óùA ¼v ³ 0 İ İ  
a ¼¼¼x s@ 0¼v ³ 0Ö° P D Å p j ù 0u  
± ½ (lineart)<sup>a</sup> æ K ¼ Å4 | ² ¼ ¼v a æ T ÅS @ C



1 İ4-8 | ¼v ³

256± ¼ ¼v ³-- ± ½É ¼ ä öù

256± ¼ ¼v ¼¼H ½É6° ÖC a ¼v ³ C256± ¼ ¼v  
1 0Ö° P D Å p j ù ¼x s24 | ² ¼ ¼v a æ T  
¼ ÅS @ C



1 İ4-9 256± ¼ ¼v ³



## 4.2.4 ± ± § A % v ³



© ú & (Brightness); G ½ ¼ v ³ ± © ú & ± © ú † © ú & × È ¼ j A  
¼ v ³ ¼ & C

´ ½ © ú & ×

¼ & ¼ v ³

¼ ¼ © ú & ×



1. Contrast;  $G = \frac{1}{2}$  (Original) vs  $G = 1$  (Maximum Contrast) vs  $G = 2$  (High Contrast)

Original Contrast

$G = \frac{1}{2}$

$G = 2$  Contrast



2. Gamma;  $\gamma = 1$  (Original) vs  $\gamma = 0.4$  (Low Gamma) vs  $\gamma = 2.0$  (High Gamma)

Gamma - 1.0

Gamma - 0.4

Gamma - 2.0









! a Å Ä å I ° ½Z

**“The trees are in their autumn beauty,  
The woodland paths are dry,  
Under the October twilight the water  
Mirrors a still sky;  
Upon the brimming water among the stones  
Are nine-and-fifty Swans.”**  
  
---W.B. Yeats

¥h Å Ä åhannel« ¢ Å Å Ä å I S D X C

**“The trees are in their autumn beauty,  
The woodland paths are dry,  
Under the October twilight the water  
Mirrors a still sky;  
Upon the brimming water among the stones  
Are nine-and-fifty Swans.”**  
  
---W.B. Yeats

! ¢ ¢ ¢ ¢ (Do Not Copy)ª ° ½Z

User Guide

Thank you for deciding on Tester. Tester offers a feast of functions that let you easily scan documents and images into your computer and manage them electronically.

System Requirements

486DX 33Mhz or higher, 1.44 MB 3.5" floppy drive or CD-ROM drive, hard drive with 20MB free disk space, 8MB memory, Microsoft Windows 95 or NT 3.51 or NT 4.0, Windows-compatible keyboard, display and mouse. Recommended: 256 color SVGA or higher graphics card, Windows-compatible fax-modem and printer, MS Mail or ccMail electronic mail software, and TWAIN-compliant scanner.

Copyright Information in this documentation is subject to change without notice. The software described in this manual is furnished under a license agreement. In no event will TEST be liable for any damages resulting from any defects or from the use of information contained herein. No part of this manual or the software may be reproduced, translated or transmitted in any form or by any means, electronic or mechanical, including photocopying or recording, for any purpose without the prior written permission of TEST, Inc. Copyright ©1996, TEST, Inc. Tester is the trademark of TEST, Inc. The products mentioned in this manual are trademarks of their respective holders.

¥h ¢ ¢ ¢ ¢hannel« ¢ A ¢ ¢ ¢ ¢ ¢ S D X C

User Guide

Thank you for deciding on Tester. Tester offers a feast of functions that let you easily scan documents and images into your computer and manage them electronically.

System Requirements

486DX 33Mhz or higher, 1.44 MB 3.5" floppy drive or CD-ROM drive, hard drive with 20MB free disk space, 8MB memory, Microsoft Windows 95 or NT 3.51 or NT 4.0, Windows-compatible keyboard, display and mouse. Recommended: 256 color SVGA or higher graphics card, Windows-compatible fax-modem and printer, MS Mail or ccMail electronic mail software, and TWAIN-compliant scanner.

Copyright Information in this documentation is subject to change without notice. The software described in this manual is furnished under a license agreement. In no event will TEST be liable for any damages resulting from any defects or from the use of information contained herein. No part of this manual or the software may be reproduced, translated or transmitted in any form or by any means, electronic or mechanical, including photocopying or recording, for any purpose without the prior written permission of TEST, Inc. Copyright ©1996, TEST, Inc. Tester is the trademark of TEST, Inc. The products mentioned in this manual are trademarks of their respective holders.

! **ÙÈh ½ÙÀ** (Auto level) (Mac)



¥R ¢ | ÈÙÈv ¢ Ì4v ¢ ¢ Ì Ò Á Ç C

.. ¥Ì ÒÈh ½ÙÀ e

.. ¥Ì ÒÈh ½ÙÀ á



¶ **ÀÕÏ** (Invert):

¤ ¥ÕR0 ± N4v ¢ ¢ § & ¢ Ì à m ÒÁA  
- ÈA | ÓÏ4v ¢ ¢ ¢ @ Ì Á Û .. à È à C

- ½Z

.. ¥¶ ÀÕÏ Òá





Ⓜ Ⓜ Ⓜ (Descreen):

Ⓜ Ⓜ L Ⓜ ± ½ Ⓜ á Ⓜ Ⓜ C



Ⓜ Ⓜ Ⓜ á e

Ⓜ Ⓜ Ⓜ á á




---

\* Ⓜ á | L Ⓜ ñ á ½ Ⓜ É Ⓜ P Ⓜ Ⓜ ñ ¾  
 , ρ C

---



## 4.2.6 “ 影 像 縮 放 ”



— 縮放比例  
— 影像寬度  
— 影像高度

### 縮放比例

縮放比例 (50%; 100%; 200%; 400%; 800%)  
 縮放比例 (50%; 100%; 200%; 400%; 800%)  
 縮放比例 (50%; 100%; 200%; 400%; 800%)

### 影像寬度

影像寬度 (英寸)

### 影像高度

影像高度 (英寸)

### 單位 (Pixel, Inch, Cm):

單位 (Pixel, Inch, Cm)

### 縮放比例

縮放比例 (50%; 100%; 200%; 400%; 800%)  
 縮放比例 (50%; 100%; 200%; 400%; 800%)  
 縮放比例 (50%; 100%; 200%; 400%; 800%)

### 影像寬度

影像寬度 (英寸)  
 5"x3"; 6"x4"; B5; B5; B4; B3 1/4" 縮放比例











° **Ÿ<sub>i</sub> G** ± ½° Ę<sup>¾1</sup> · S | <sup>3</sup> ° ŸĀD<sub>i</sub> A | ý - 0 ± ½° Ę  
 ®É<sub>i</sub> A ± ½° Ę<sup>¾1</sup> ©Ā · t <sup>2</sup> Ā , g ± · | - ð  
 µMµL<sup>a</sup> k <sup>1</sup> B S @<sub>i</sub> C

**µ<sup>a</sup> i G** ½ÐĀĘ - d  
 1) - 0 S<sub>-</sub> <sup>3</sup> s ± µ ½u <sup>3</sup> E | <sup>3</sup> ± µ | n<sub>i</sub> C  
 2) ½T ©w SCSi <sup>3</sup> s ± µ ½u<sup>a</sup> ° · · â - Ó ± µ ĀY  
<sup>3</sup> s ± µ ¥ ĵ ½T<sub>i</sub> A x @ - Ó ± µ ĀY <sup>3</sup> s ± µ  
 S A<sup>a</sup> ° SCSi x , ¥ ó<sub>i</sub> A ¥ t x @ - Ó<sup>3</sup> s ± µ  
<sup>1</sup> q , E ¥ D<sup>¾4</sup> ÷<sub>i</sub> C

° **Ÿ<sub>i</sub> G** ± ½° Ę<sup>1</sup> L µ { x x<sub>i</sub> A ± ½° Ę<sup>¾1</sup> , g ± · · |  
 µ o ¥ X ©ÇĀn ©Ā<sup>a</sup> ĩ · | « e « á · · Ó | ^  
 | a ± ½° Ę<sub>i</sub> C

**µ<sup>a</sup> i G** <sup>3</sup> q ± · <sup>3</sup> o<sup>a</sup> í ¥ Ü<sup>1</sup> q , E<sup>a</sup> ° ° 0<sup>¾4</sup> ÐĀĘ  
 x E ° ÷ x<sub>j</sub> ©Ā - 0 CPU<sup>a</sup> ° <sup>3</sup> t « x x E ° ÷  
 S Ö<sub>i</sub> C ½Ð¼W ¥ [ S A<sup>a</sup> ° ° 0<sup>¾4</sup> ÐĀĘ · · ĩ 32MB  
 ¥ H x W<sub>i</sub> A ©Ā - 0 S Ó ' « Pentium ¥ H x W<sup>a</sup> °  
 CPU<sub>i</sub> C

° **Ÿ<sub>i</sub> G** ± ½° Ę<sup>¼v</sup> <sup>1</sup> <sup>3</sup> ®É<sub>i</sub> A © Ò ± ½° Ę ¶ i · · Ó<sup>a</sup> °  
<sup>¼v</sup> <sup>1</sup> <sup>3</sup> x @<sup>a</sup> ½<sup>3</sup> E x Ó · t<sub>i</sub> C

**µ<sup>a</sup> i G**  
 1) ½Ð ½Ö<sup>¾4</sup> ã Gamma- Ę<sup>a</sup> ° <sup>3</sup> ] ©w<sub>i</sub> A · í ± z  
 | C | L ®É ½Ð ± N ± z<sup>a</sup> ° | L<sup>a</sup> í <sup>¾4</sup> ÷ x S  
 Gamma- Ę<sup>3</sup> ] - ° 2.2<sub>i</sub> A · í · · ĩ ¥ Ā<sup>3</sup> ¥ Ā<sup>3</sup>  
<sup>3</sup> n Ā é ®É<sub>i</sub> A ½Ð ± N ĵ Ā<sup>1</sup> ð<sup>a</sup> ° Gamma- Ę  
<sup>3</sup> ] - ° 1.8~2.2 x S ¶ i<sub>i</sub> C  
 2) · í ± z · · ĩ ¥ Ā TWAIN x ¶ - ± ®É<sub>i</sub> A ½Ð ½Ö<sup>¾4</sup>  
<sup>¾4</sup> ã « G « x (Brightness)<sup>3</sup> ] ©w · · Ó · · Ů ± 0 , Ů  
 « G<sup>a</sup> ° ¼v<sup>1</sup> <sup>3</sup> | C

$\circ \mathbf{Y}_j \mathbf{G} \pm \frac{1}{2} \circ \ddot{E} \times \dot{a} \mid r \frac{1}{2} u \pm \emptyset (\text{lineart}) \times \mathbb{S} \frac{1}{4} v \ ^1 \ ^3$   
 $\otimes \dot{E}_j \mathbf{A} \odot \ddot{O} \pm \frac{1}{2} \circ \ddot{E}^a \circ \frac{1}{2} u \pm \emptyset \ddot{A} \ddot{a} \pm 0 \times \ddot{n} - \dot{i}$   
 $\odot \mid \times \dot{a} \neq \acute{o} \times W \times \mathbb{S} \frac{1}{2} u \pm \emptyset \mathbb{S} \acute{o}^2 \dot{E}_j \mathbf{C}$   
 $\mu^a \mid \mathbf{G} \frac{1}{2} \mathbb{D} \frac{1}{2} \ddot{O} \frac{3}{4} \ddot{a} \ll \mathbf{G} \ll \times \times \mathbb{S}^3 \mid \odot w \mid \mathbf{A} \mid \mid \ll \mathbf{G} \ll \times$   
 $\ ^1 \mathbf{L} \mathbb{S} \mathbf{C} \otimes \dot{E}_j \mathbf{A} \frac{1}{2} u \pm \emptyset^a \circ \ddot{A} \ddot{a} \frac{1}{2} t \cdot \mid \ ^3 \mathbf{Q} \mu \emptyset$   
 $- \circ \ \eta \ddot{A} \mid \hat{a} \circ \dot{i} \circ \dot{i} \mid \mathbf{A} \mid \acute{O} \ddot{i} \pm 0 \frac{1}{2} u \pm \emptyset \ ^1 \mathbf{L}$   
 $\ ^2 \dot{E}_j \mathbf{C}$

## 6.2 SPNA È

- SPNA È | XNYB ° Xú ½ÈS PNA ÈC È z È³ | µ ð S  
 « q A2Dz ÇÆU e ; @ÆG

\* ± ½Èª S Ç©MÖ¿ ½X( | È ½Èªª ©³ )i C

\* ¹ q µÅÈ | Æ· Çp A z CPU ° Öp RAM | h è µw DÆP Å ; Åã  
 ¥Üd A ¶ ¥d.)

\* ± @ÖËÈ S ÅÀ¥µ { | ° W ÜP Öp C

\* ± @ÖËÈ S ½ÈÅX È { | ° Öp C

½DÈ U Ç è p S ÚÈ µ i G

¬ X   a Ì	Avision Labs., Inc.
S }	6815 Mowry Ave. Newark, CA 94560, USA
¹ q Ü ½X	(1) (510) 739-2369
¶ Çu ½X	(1) (510) 739-6060
° S }	<a href="http://www.avision.com">http://www.avision.com</a>
¹ q ¶ È ó H₂c	<a href="mailto:support@avision-labs.com">support@avision-labs.com</a>

.. X   a Ì	- X Ü Xq
S } G	» ÆW Üs È ¼Çu ¶ È Æ ã s @ 20, ¹
¹ q Ü ½X G	(886) (3) 578-2388
¶ Çu ½X G	(886) (3) 577-7017
° S }	<a href="http://www.avision.com.tw">http://www.avision.com.tw</a>
¹ q ¶ È ó H₂ç G	<a href="mailto:service@avision.com.tw">service@avision.com.tw</a>

# 7. 2 £ « ~ 3 W ® æ

3 WæY S Ô Ê A æq ¼C

## 7.1 ¾« † GAVA3 400/AVA3 Plus

± ½ Æ k ò Å G	¥ ¥ x † ½ Æ <sup>1</sup>
¥ Æ C Ñ R x G	300 dpi * 600 dpi (H*V)
³ Ì ª Ñ R x G	4800 dpi * 4800 dpi (H*V)
± ½ Æ ò Å G	¶ Æ Õ
	° Õ (64-step)
	256   Ç Æ Æ J0 bits/1024¼h Ç Æ Æ X bits/256¼h Ç ¥
	30-bit ¥ Þ æ Æ J0 bits/¤ Q Æ Æ Æ X 24 bits/¤ d U Æ
¤ Æ Æ Ç q G	A3, Letter, A4, B5, A5,   W ù
¤ ¶ † G	SCSI-II
<sup>1</sup> q ½ G	100Vac~240Vac, 50-60Hz, ¥ ± µ j
- Õ q G	45 Watts
¤ Ç q Ç ¼ æ <sup>2</sup> x° ð ^	630 ¤ Æ Ç 394 ¤ Æ Ç 120 ¤ Æ Ç
- ¶ q G	12 ¤ ½ (26.4lbs)



