

XEROX.

laser printer

Quick Use Guide

TW 快速用戶手冊

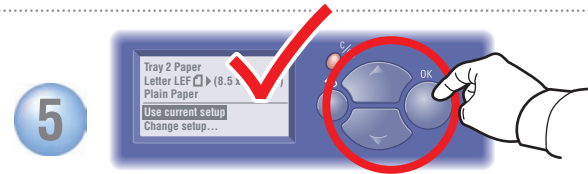
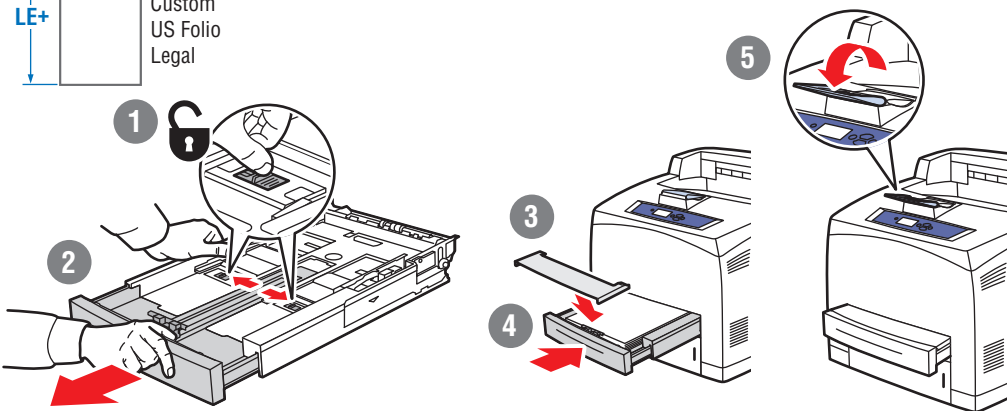
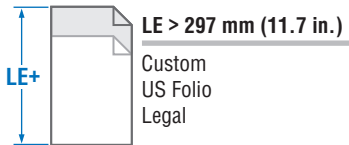
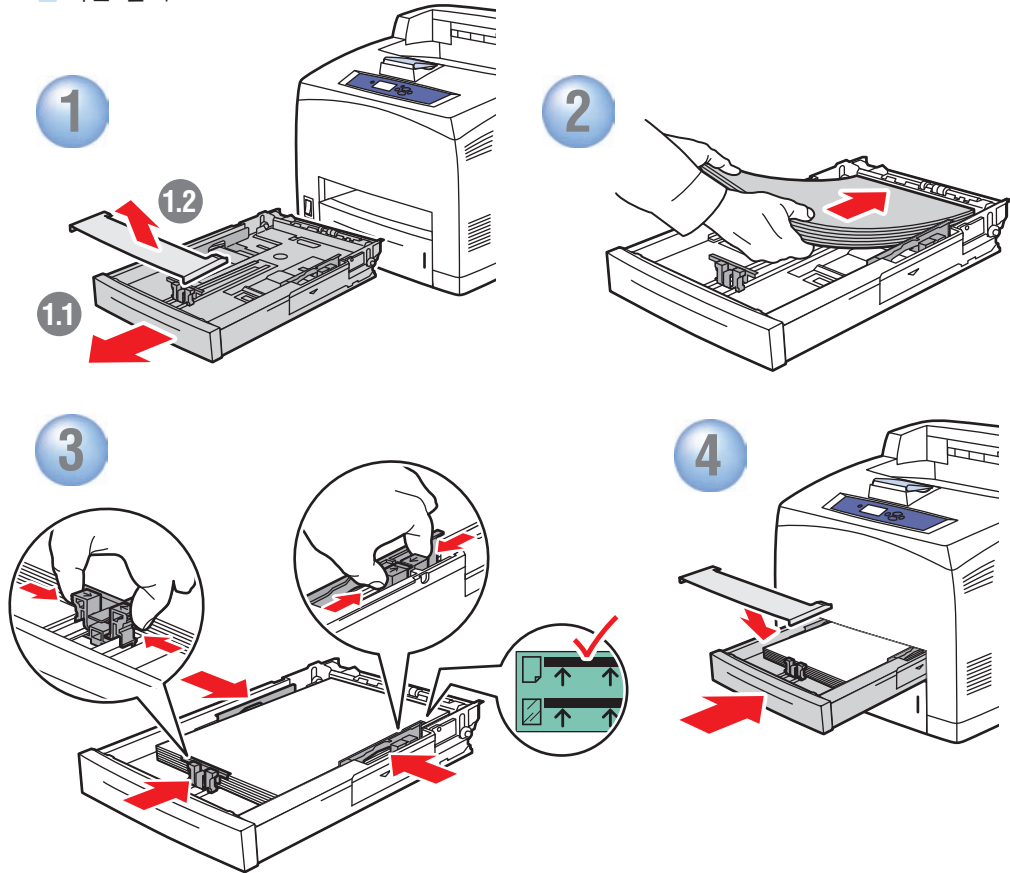
KO 요약 사용 안내서



EN Basic Printing

TW 基本列印

KO 기본 인쇄



5 When loading paper: Select appropriate settings on the control panel.

TW 裝入紙張時：在控制面板選取適當的設定。

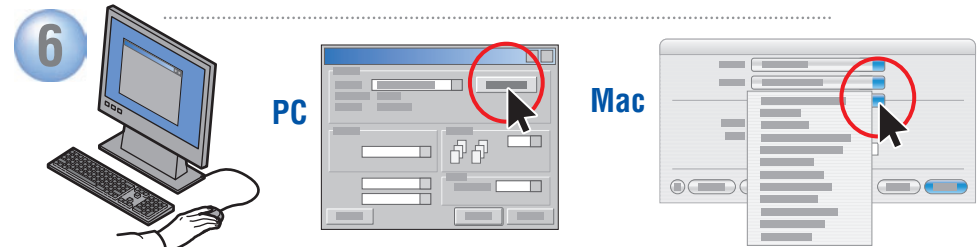
KO 용지 공급시: 제어판에서 해당 설정을 선택합니다.

Auto-Sensed sizes	
A5.....	148 x 210 mm
A4.....	210 x 297 mm
DL Envelope.....	110 x 220 mm
Letter.....	8.5 x 11.0 in.
US Folio.....	8.5 x 13.0 in.
Legal.....	8.5 x 14.0 in.
#10 Commercial Envelope...	9.5 x 14.12 in.

TW 自動感應尺寸
KO 자동 감지 크기

User-Selected sizes	
A6.....	(105 x 148 mm)
ISO B5.....	(176 x 250 mm)
B5 JIS.....	(182 x 257 mm)
DL Envelope.....	(110 x 220 mm)
C5 Envelope.....	(162 x 229 mm)
B5 Envelope.....	(176 x 250 mm)
Custom.....	(SE) x (LE)
Index Card.....	(3.0 x 5.0 in.)
Statement.....	(5.5 x 8.5 in.)
Executive.....	(7.25 x 10.5 in.)
Monarch Envelope.....	(3.87 x 7.5 in.)
#10 Commercial Envelope...	(9.5 x 14.12 in.)

TW 使用者選擇的尺寸
KO 사용자 선택 크기



6 When Printing: Select properties. Use Xerox printer driver.

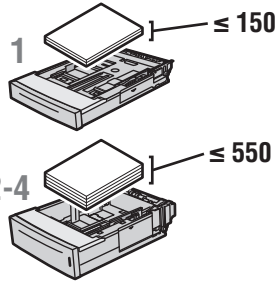
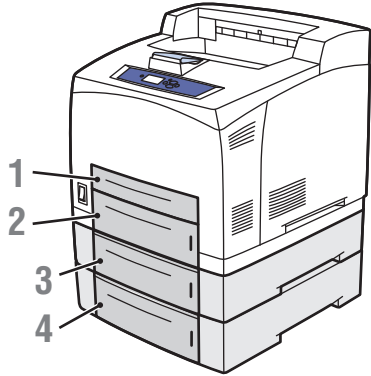
TW 列印時：選取內容。使用 Xerox 印表機驅動程式。

KO 인쇄시: 등록 정보를 선택합니다. Xerox 프린터 드라이버를 사용합니다.

Supported Papers

TW 支援的紙張

KO 지원되는 용지



Tray 1-4	
64 – 216 g/m ² (17 lb. Bond – 80 lb. Cover)	
A6.....	105 x 148 mm
A5.....	148 x 210 mm
A4.....	210 x 297 mm
ISO B5.....	176 x 250 mm
B5 JIS.....	182 x 257 mm
Index Card.....	3 x 5 in.
Statement.....	5.5 x 8.5 in.
Executive.....	7.25 x 10.5 in.
Letter.....	8.5 x 11.0 in.
US Folio.....	8.5 x 13.0 in.
Legal.....	8.5 x 14.0 in.
DL.....	110 x 220 mm
C5.....	162 x 229 mm
B5.....	176 x 250 mm
#10 Commercial.....	4.12 x 9.5 in.
Monarch.....	3.87 x 7.5 in.
Custom.....	(SE) x (LE)

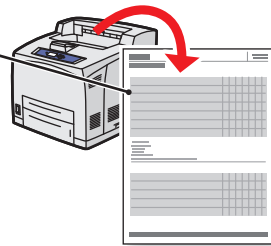
- Print the Paper Tips page for more information.
- See the [Printing Basics](#) chapter in the *User Guide*.

繁體中文 (TW)

- 列印紙張訣竅以取得更多資訊。
- 請參閱 *User Guide* 中的 [Printing Basics](#) 章節。

한글 (KO)

- 자세한 내용을 보려면 용지 정보 페이지를 인쇄합니다.
- *User Guide*의 [Printing Basics](#) 장을 확인합니다.



Envelope

TW 信封
KO 봉투

Labels

TW 標籤
KO 레이블 용지

Letterhead

TW 信紙信頭
KO 양식 용지

Custom

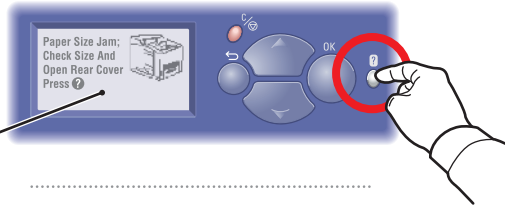
TW 自訂
KO 사용자 정의

Tray 1			
	SE	76 – 216 mm (3.0 – 8.5 in.)	89 – 216 mm (3.5 – 8.5 in.)
	LE	127 – 356 mm (5.0 – 14.0 in.)	140 – 356 mm (5.5 – 14.0 in.)
Trays 2-4			
	SE	98 – 216 mm (3.9 – 8.5 in.)	98 – 216 mm (3.9 – 8.5 in.)
	LE	148 – 356 mm (5.8 – 14.0 in.)	148 – 356 mm (5.8 – 14.0 in.)

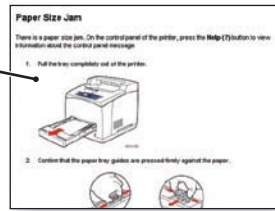
EN Paper Jams

TW 夾紙

KO 용지 걸림



- **Press Help Button** for jam clearing procedures.
- **View PrintingScout™ message** or see the **Troubleshooting** chapter in the *User Guide*.



繁體中文 (TW)

- 按下說明按鈕以取得清除夾紙程序。
- 檢視 PrintingScout™ 訊息或參閱 *User Guide* 中的 Troubleshooting 章節。

한글 (KO)

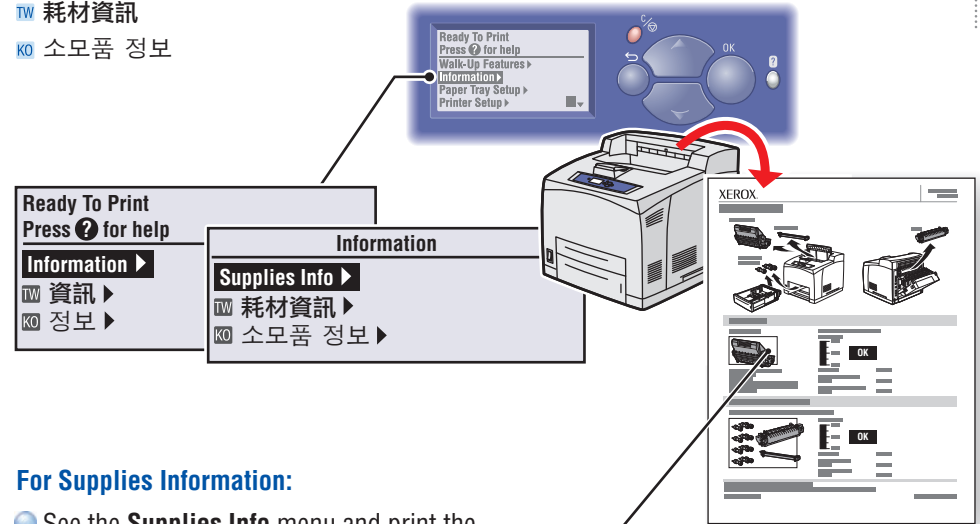
- 걸린 용지를 제거하는 절차를 보려면 도움말 버튼을 누르십시오.
- PrintingScout™ 메시지를 보거나 *User Guide*의 Troubleshooting 장을 확인합니다.



EN Supplies Info

TW 耗材資訊

KO 소모품 정보



For Supplies Information:

- See the **Supplies Info** menu and print the Supplies Usage page.
- See the **Supplies** tab in the Xerox Support Centre, contact your local reseller, or visit the Xerox Supplies website.

繁體中文 (TW)

關於耗材資訊：

- 請參閱耗材資訊功能表，並列印耗材用量頁。
- 請參閱 Xerox 支援中心的耗材標籤、聯絡您當地的經銷商，或瀏覽原廠耗材網站。

한글 (KO)

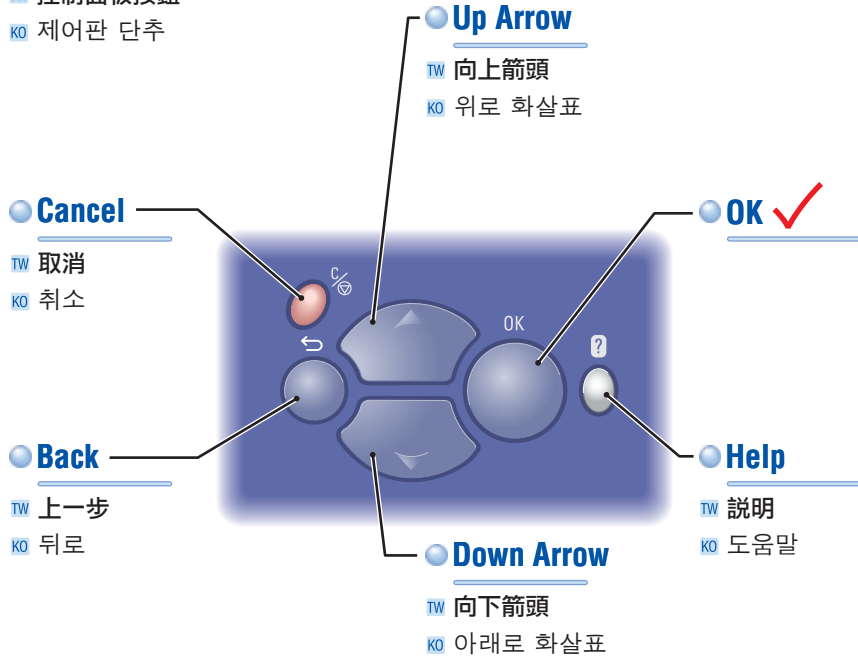
소모품 정보:

- 소모품 정보 메뉴를 확인하고 소모품 사용 페이지를 인쇄합니다.
- Xerox 지원 센터의 소모품 탭을 확인하거나, 해당 대리점에 문의하거나 또는 Xerox 소모품 웹 사이트를 방문하십시오.

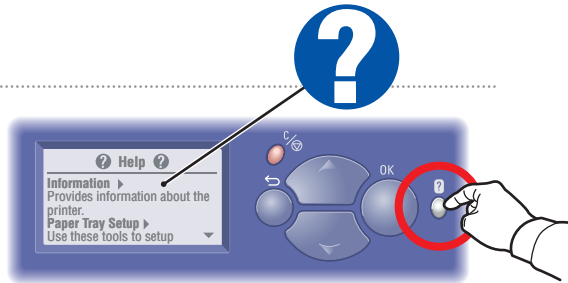


Control Panel Buttons

TW 控制面板按鈕
KO 제어판 단추



Help Button: Press at any time to display additional information about the message or menu.



繁體中文 (TW)

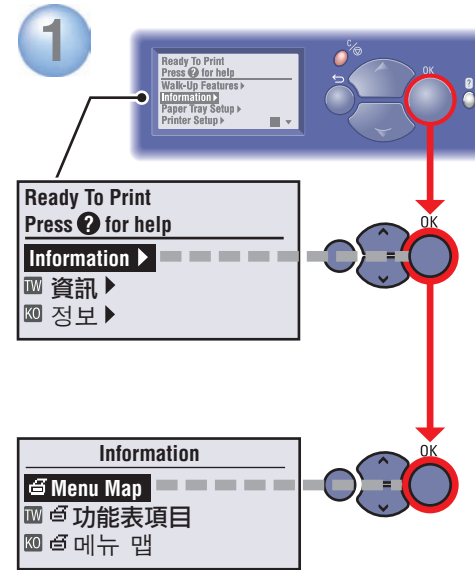
說明按鈕：隨時可按此按鈕顯示關於訊息或選單額外的資訊。

한글 (KO)

도움말 버튼: 메시지 또는 메뉴에 대한 추가 정보를 보시려면 언제든지 누르십시오.

Information Pages

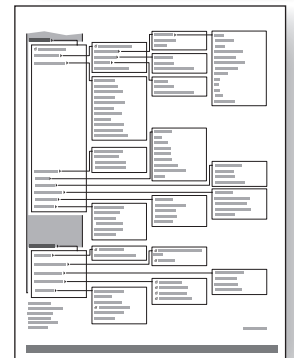
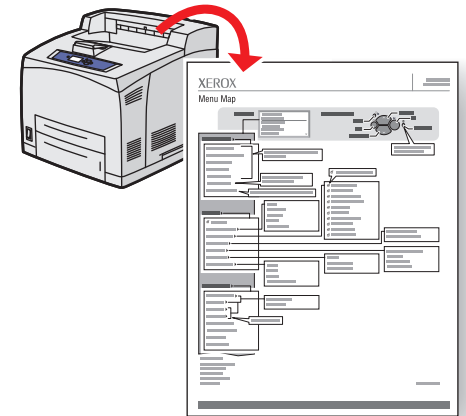
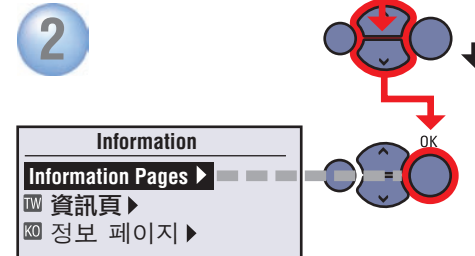
TW 資訊頁
KO 정보 페이지



☰ = Prints an information page.

TW ㄱ = 列印資訊頁

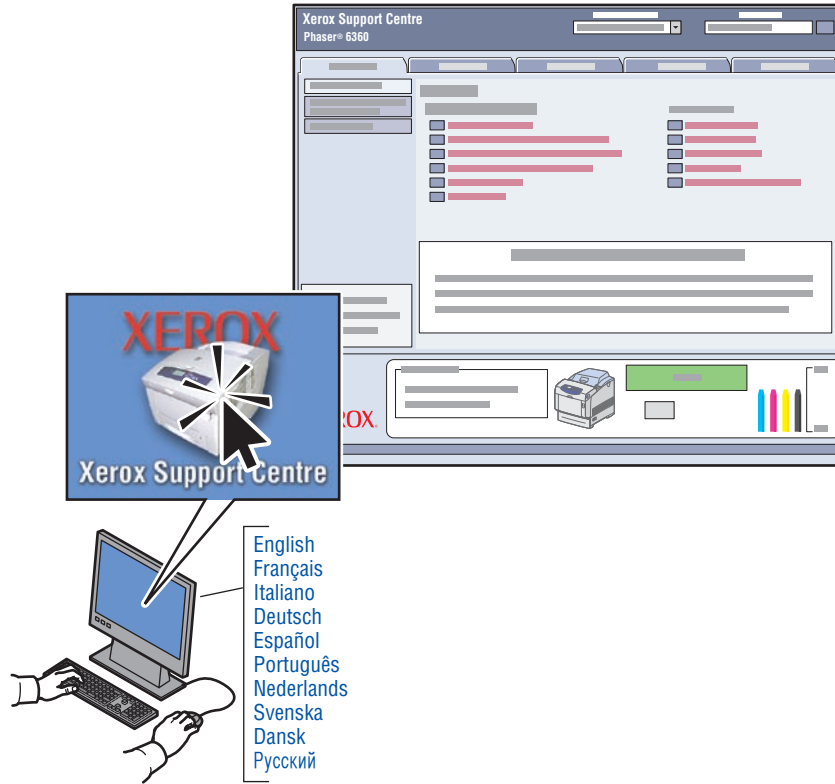
KO ㄱ = 정보 페이지를 인쇄합니다



EN Xerox Support Centre

TW Xerox 支援中心

KO Xerox 지원 센터



Utility installs with the printer driver, or go to www.xerox.com/office/4510support. Double-click the icon on the Windows desktop or Mac OS X dock.

- **User manuals and video tutorials**
- **Troubleshooting**
- **Printer and supplies status**
- **User safety**
- **Material Safety Data Sheets**

繁體中文 (TW)

公用程式會和印表機驅動程式一起安裝，或者請前往 www.xerox.com/office/4510support。按兩下 Windows 桌面上的圖示或 Mac OS X dock。

- 用戶手冊和教學影片
- 故障排除
- 印表機和耗材狀態
- 用戶安全
- 材料安全規格書

한글 (KO)

유틸리티는 프린터 드라이버와 함께 설치됩니다. 또는 www.xerox.com/office/4510support를 방문하셔서 설치할 수도 있습니다. Windows 바탕 화면 또는 Mac OS X 도크에서 아이콘을 두 번 누르십시오.

- 사용자 설명서 및 동영상 자습서
- 문제 해결
- 프린터 및 소모품 상태
- 사용자 안전
- 물질 안전 보건 자료(MSDS)